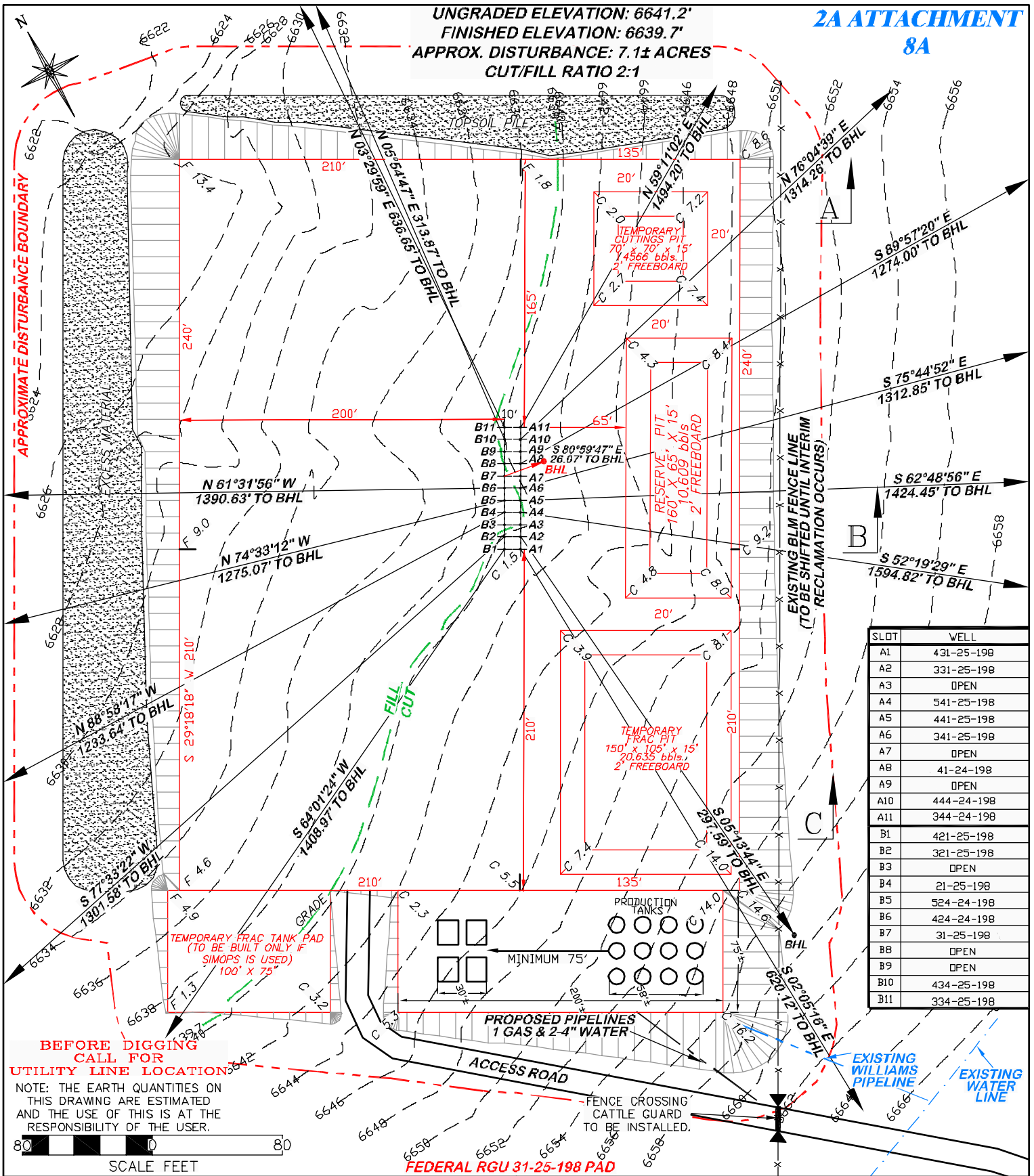


UNGRADED ELEVATION: 6641.2'
FINISHED ELEVATION: 6639.7'
APPROX. DISTURBANCE: 7.1± ACRES
CUT/FILL RATIO 2:1



DRG RIFFIN & ASSOCIATES, INC.
1414 ELK ST., ROCK SPRINGS, WY 82901
(307) 382-5028

CONSTRUCTION LAYOUT DRAWING 1 OF 4

WILLIAMS PRODUCTION RMT COMPANY
FEDERAL RGU 41, 334, 344, 424, 434, 44, 524-24, 21, 31, 321, 331, 341, 421, 431, 441, 541-25-198
SECTION 25, T1S, R98W, 6th P.M.

ESTIMATED EARTHWORK

ITEM	CUT	FILL	TOPSOIL	EXCESS
PAD	20191 CY	16573 CY	3292 CY	326 CY
PIT	9917 CY			9917 CY
TOTALS	30108 CY	16573 CY	3292 CY	10243 CY

DRAWN: 10/14/08 - MMM

SCALE: 1" = 80'

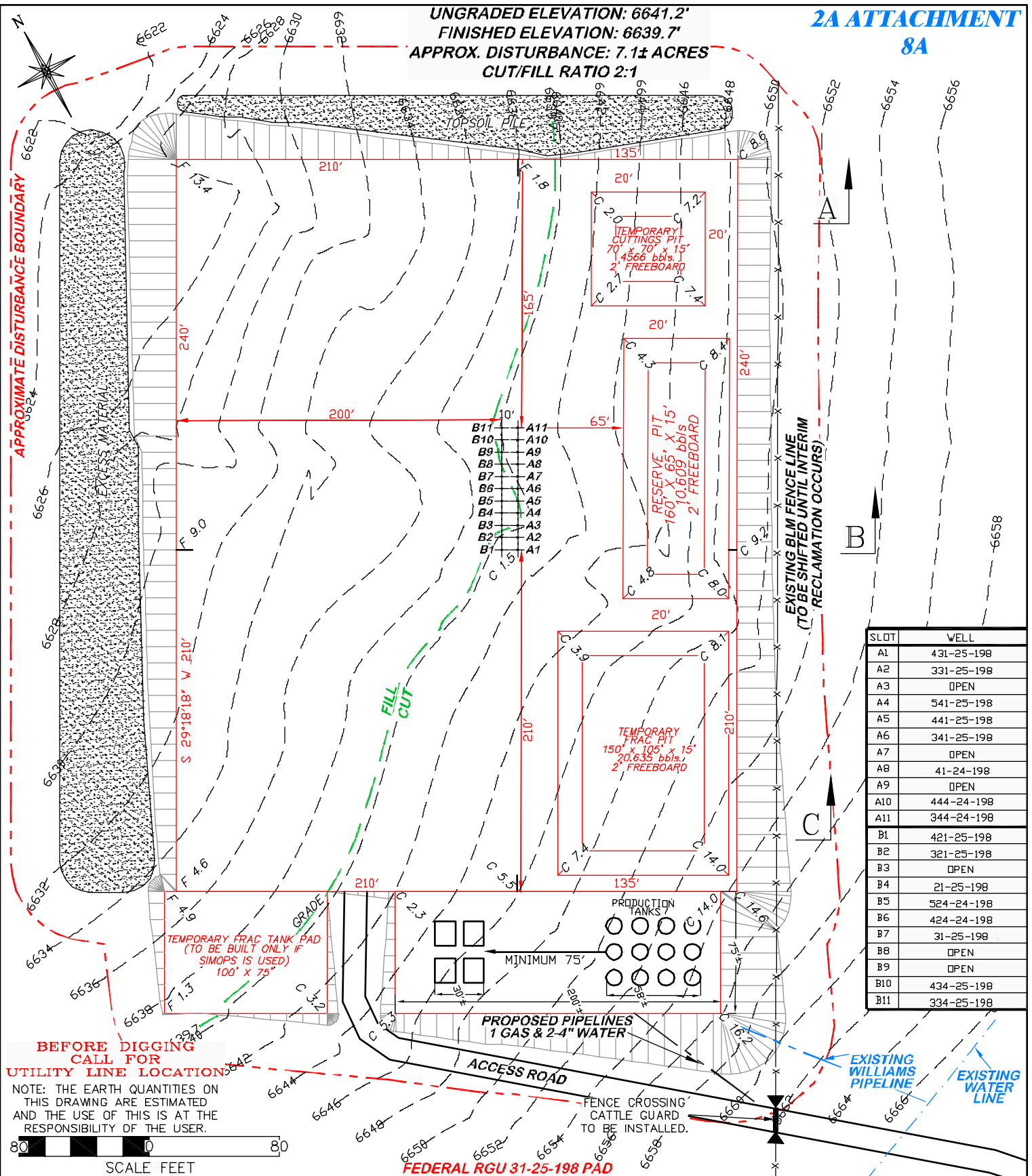
REVISED: 2/16/10 - MMM

DRG JOB No. 17148

MISC. REVISIONS

EXHIBIT 2 - SHEET 1 OF 2

UNGRADED ELEVATION: 6641.2'
 FINISHED ELEVATION: 6639.7'
 APPROX. DISTURBANCE: 7.1± ACRES
 CUT/FILL RATIO 2:1



SLOT	WELL
A1	431-25-198
A2	331-25-198
A3	OPEN
A4	541-25-198
A5	441-25-198
A6	341-25-198
A7	OPEN
A8	41-24-198
A9	OPEN
A10	444-24-198
A11	344-24-198
B1	421-25-198
B2	321-25-198
B3	OPEN
B4	21-25-198
B5	524-24-198
B6	424-24-198
B7	31-25-198
B8	OPEN
B9	OPEN
B10	434-25-198
B11	334-25-198

**BEFORE DIGGING
 CALL FOR
 UTILITY LINE LOCATION**

NOTE: THE EARTH QUANTITIES ON
 THIS DRAWING ARE ESTIMATED
 AND THE USE OF THIS IS AT THE
 RESPONSIBILITY OF THE USER.

80 0 80
 SCALE FEET

FEDERAL RGU 31-25-198 PAD



RIFFIN & ASSOCIATES, INC.
 1414 ELK ST., ROCK SPRINGS, WY 82901

(307) 382-5028

DRAWN: 10/14/08 - MMM

SCALE: 1" = 80'

REVISED: 2/16/10 - MMM

DRG JOB No. 17148

MISC. REVISIONS

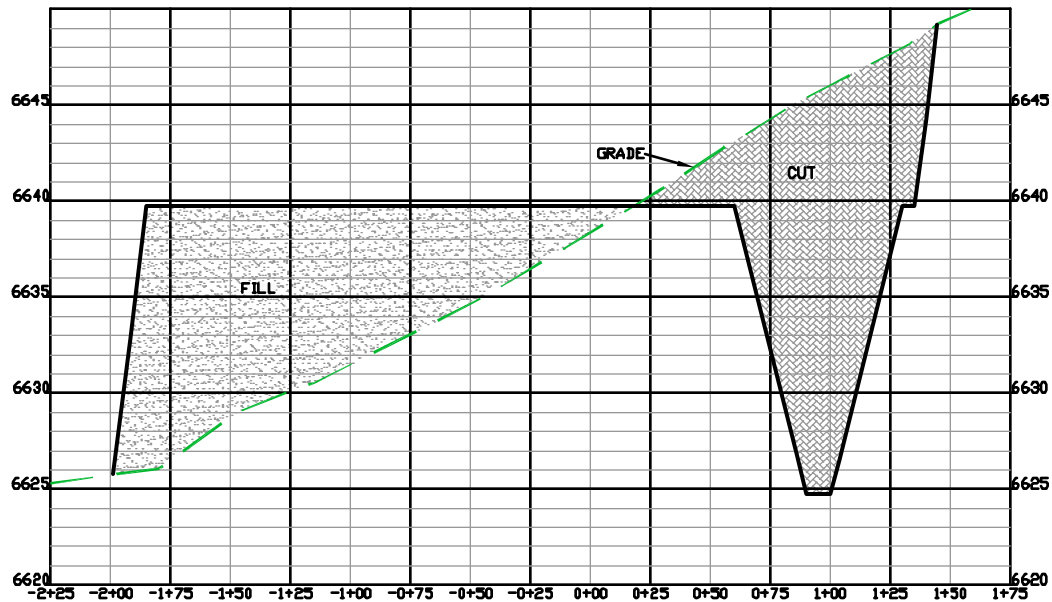
EXHIBIT 2 - SHEET 2 OF 2

CONSTRUCTION LAYOUT DRAWING 2 OF 4

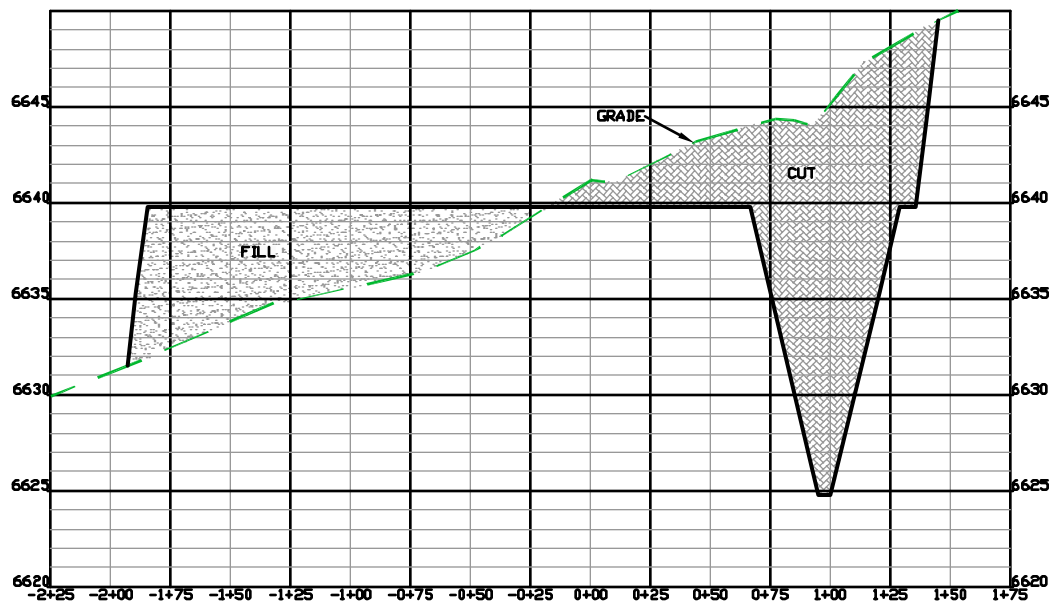
WILLIAMS PRODUCTION RMT COMPANY
FEDERAL RGU 41, 334, 344, 424, 434, 44, 524-24, 21, 31, 321, 331,
341, 421, 431, 441, 541-25-198
SECTION 25, T1S, R98W, 6th P.M.

ESTIMATED EARTHWORK

ITEM	CUT	FILL	TOPSOIL	EXCESS
PAD	20191 CY	16573 CY	3292 CY	326 CY
PIT	9917 CY			9917 CY
TOTALS	30108 CY	16573 CY	3292 CY	10243 CY




A

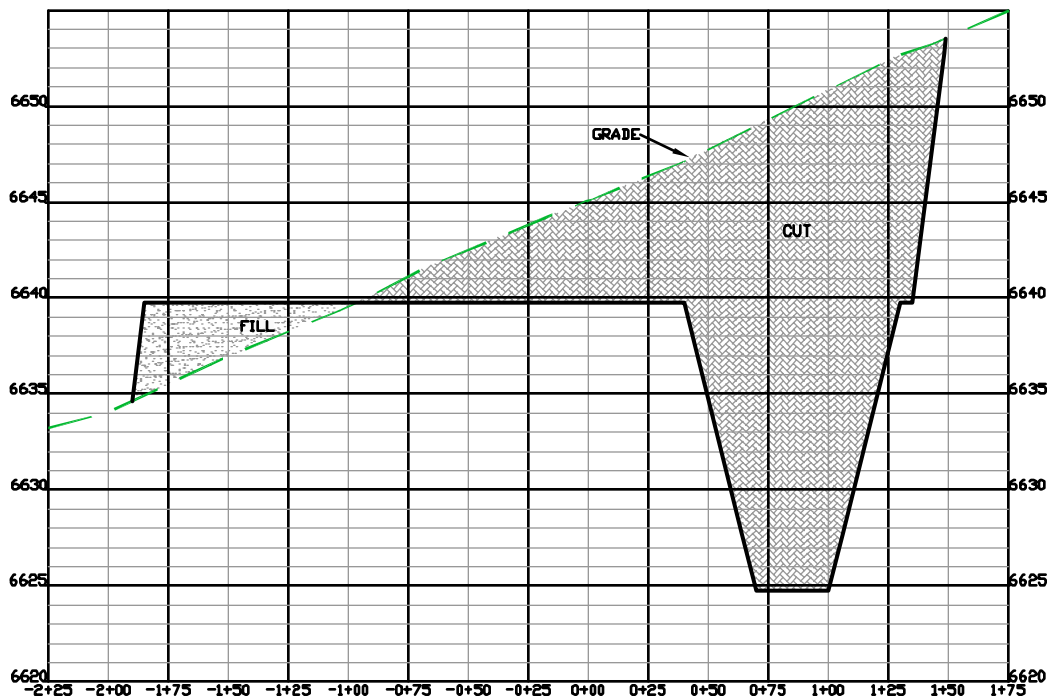


B

FEDERAL RGU 31-25-198 PAD

 DRG RIFFIN & ASSOCIATES, INC. (307) 362-6028 1414 ELK ST., ROCK SPRINGS, WY 82901	
DRAWN: 10/14/08 - MMM	HORZ. 1" = 80' VERT. 1" = 10'
REVISED: 2/16/10 - MMM	DRG JOB No. 17148
REVISED PAD ELEVATION	EXHIBIT 3 - SHEET 1 OF 2

CONSTRUCTION LAYOUT DRAWING 3 OF 4 WILLIAMS PRODUCTION RMT COMPANY FEDERAL RGU 41, 334, 344, 424, 434, 44, 524-24, 21, 31, 321, 331, 341, 421, 431, 441, 541-25-198 SECTION 25, T1S, R98W, 6th P.M. UNGRADED ELEVATION: 6641.2' FINISHED ELEVATION: 6639.7'
--



C

FEDERAL RGU 31-25-198 PAD



RIFFIN & ASSOCIATES, INC.
1414 ELK ST., ROCK SPRINGS, WY 82901

(307) 362-6028

DRAWN: 10/14/08 - MMM

HORZ. 1" = 80' VERT. 1" = 10'

REVISED: 2/16/10 - MMM

DRG JOB No. 17148

REVISED PAD ELEVATION

EXHIBIT 3 - SHEET 2 OF 2

CONSTRUCTION LAYOUT DRAWING 4 OF 4

WILLIAMS PRODUCTION RMT COMPANY
FEDERAL RGU 41, 334, 344, 424, 434, 44, 524-24,
21, 31, 321, 331, 341, 421, 431, 441, 541-25-198
SECTION 25, T1S, R98W, 6th P.M.

UNGRADED ELEVATION: 6641.2'
FINISHED ELEVATION: 6639.7'