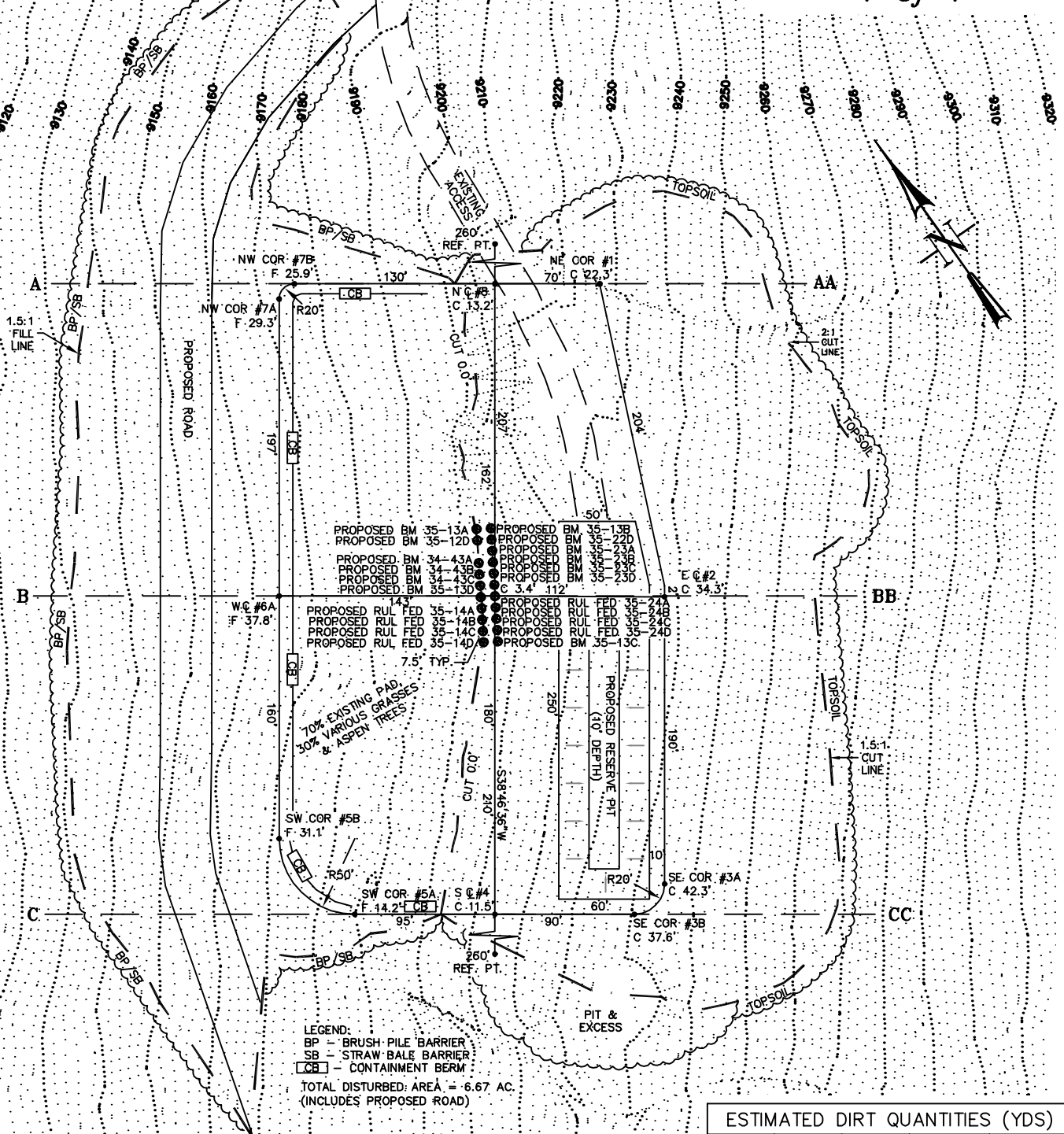


# CONSTRUCTION LAYOUT DRAWING 1 of 4

GRAPHIC SCALE IN FEET  
1 INCH = 100 FEET



ESTIMATED DIRT QUANTITIES (YDS)				
ITEM	CUT	FILL	TOPSOIL	EXCESS
PAD & ROAD	82800	72900	9260	640
PIT	3280			3280
TOTALS	86080	72900	9260	3920



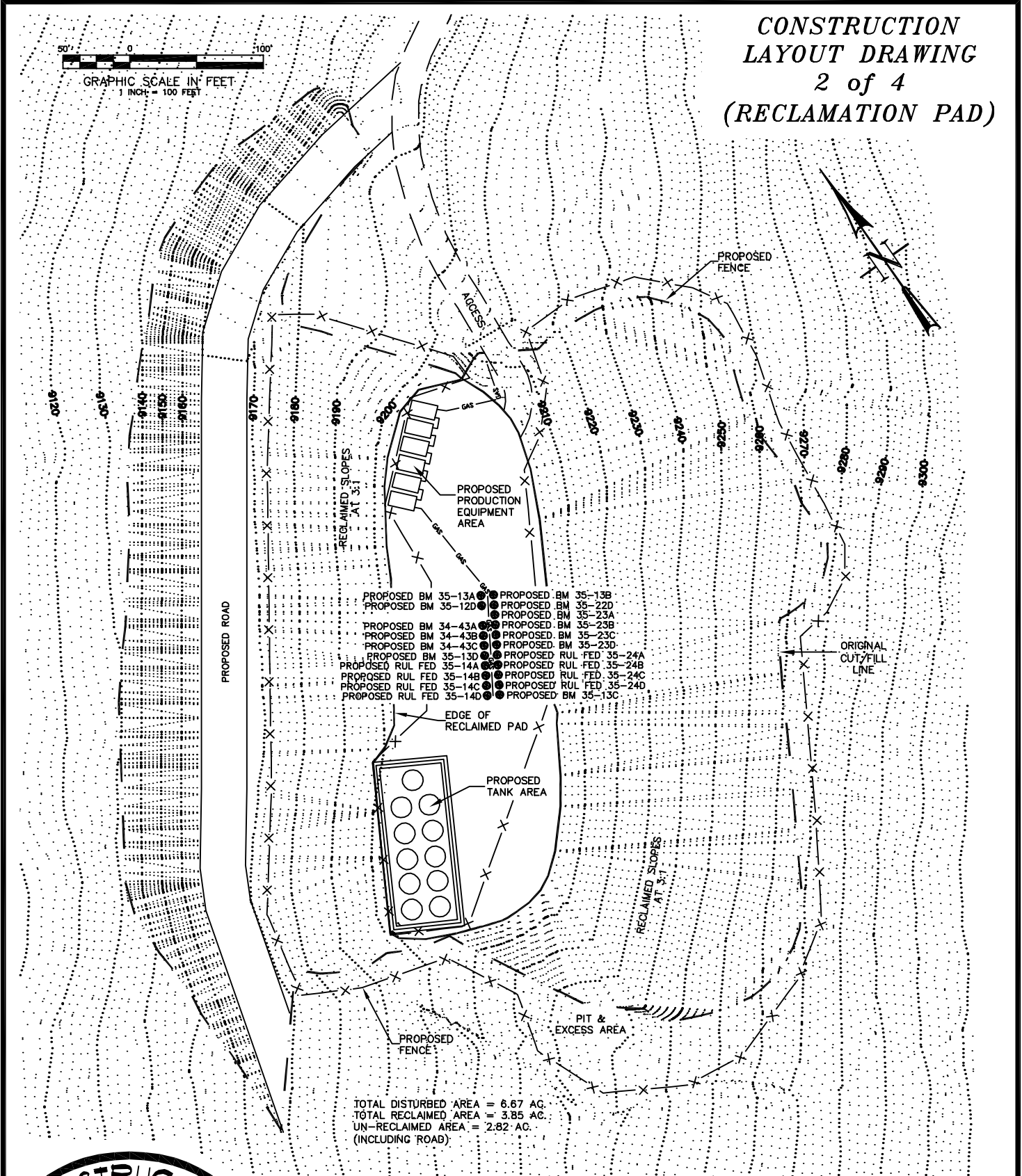
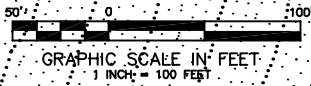
CONSTRUCTION SURVEYS, INC.  
0012 SUNRISE BLVD.  
SILT, CO 81652  
(970)876-5753

BM #35L  
NW1/4 SW1/4 OF SECTION 35, T. 7 S., R. 95 W.  
NOBLE ENERGY INC.

SCALE: 1" = 100'

SHEET: 6 of 10

**CONSTRUCTION  
LAYOUT DRAWING  
2 of 4  
(RECLAMATION PAD)**



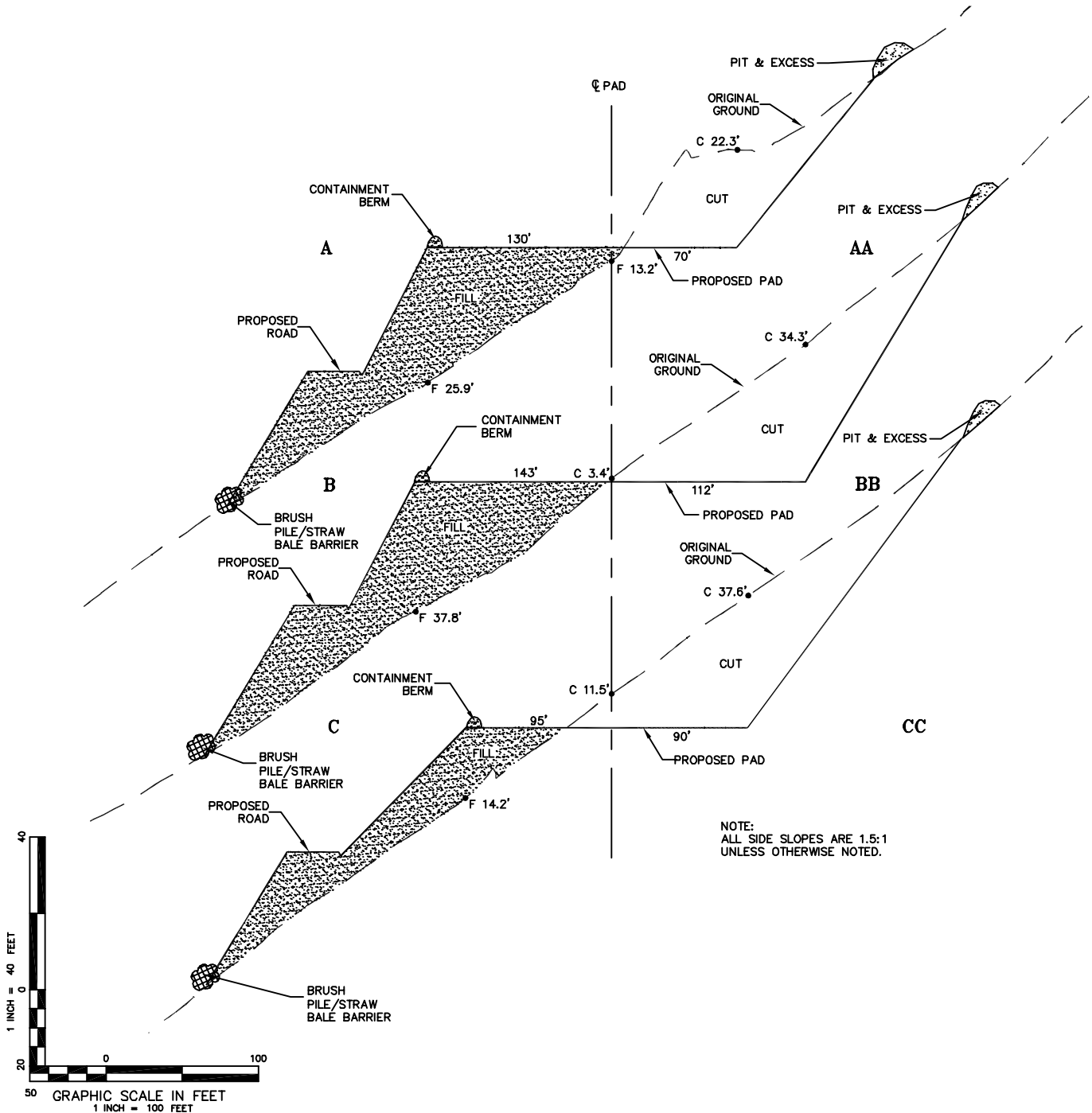
TOTAL DISTURBED AREA = 6.67 AC.  
TOTAL RECLAIMED AREA = 3.85 AC.  
UN-RECLAIMED AREA = 2.82 AC.  
(INCLUDING ROAD)



**CONSTRUCTION SURVEYS, INC.**  
0012 SUNRISE BLVD.  
SILT, CO 81652  
(970)876-5753

**BM #35L**  
NW1/4 SW1/4 OF SECTION 35, T. 7 S., R. 95 W.  
**NOBLE ENERGY INC.**

**CONSTRUCTION  
LAYOUT DRAWING  
3 of 4  
(CROSS SECTIONS  
OF PIT & PAD)**



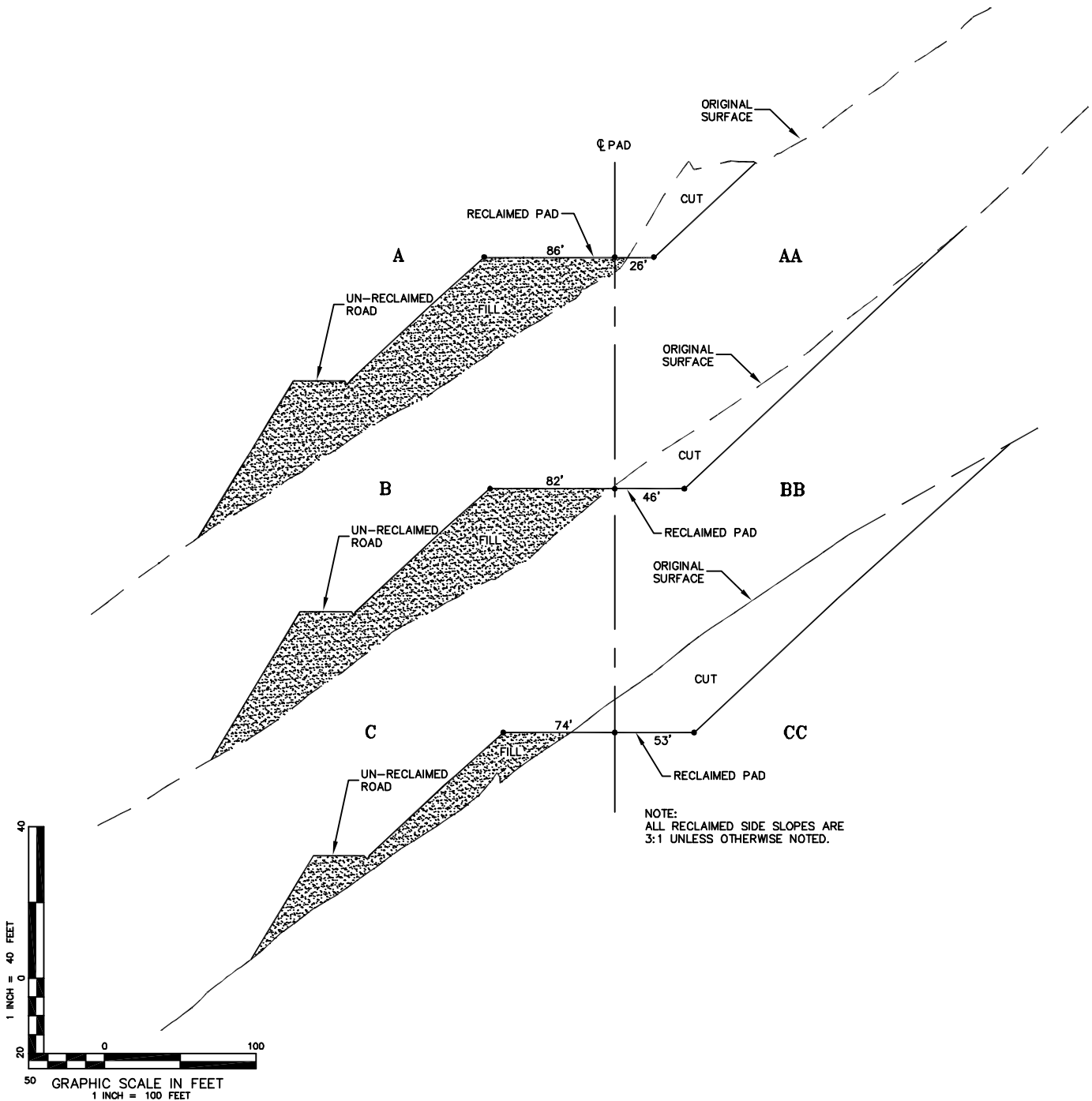
**CONSTRUCTION SURVEYS, INC.**  
0012 SUNRISE BLVD.  
SILT, CO 81652  
(970)876-5753

**BM #35L**  
NW1/4 SW1/4 OF SECTION 35, T. 7 S., R. 95 W.  
**NOBLE ENERGY INC.**

SCALE: AS SHOWN

SHEET: 8 of 10

**CONSTRUCTION  
LAYOUT DRAWING  
4 of 4  
(CROSS SECTIONS OF  
FINAL RECLAMATION PAD)**



**CONSTRUCTION SURVEYS, INC.**  
0012 SUNRISE BLVD.  
SILT, CO 81652  
(970)876-5753

**BM #35L**  
NW1/4 SW1/4 OF SECTION 35, T. 7 S., R. 95 W.  
**NOBLE ENERGY INC.**

SCALE: AS SHOWN

SHEET: 9 of 10