

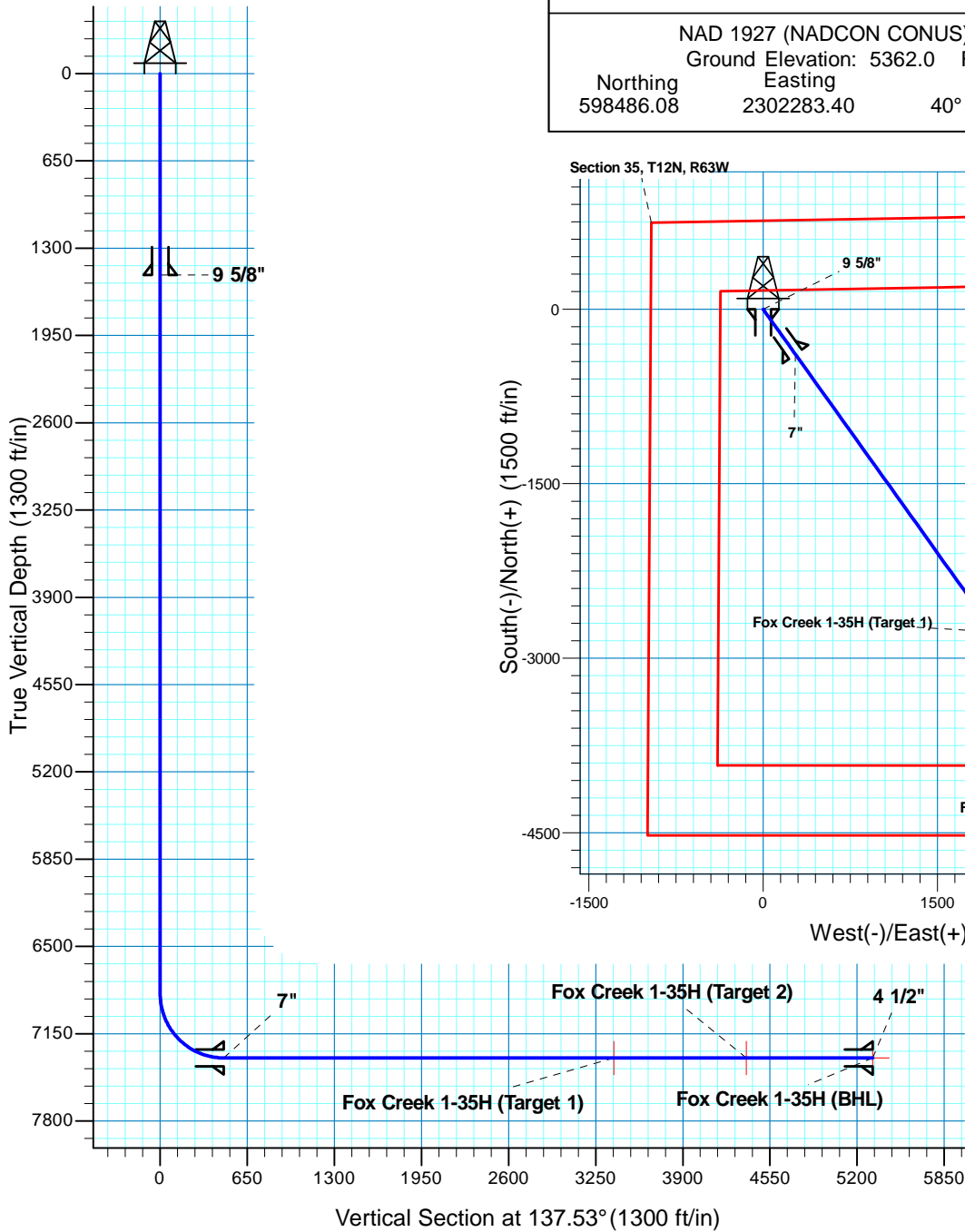
Fox Creek 1-35H

Section 35 T12N R63W

Weld County, CO



Surface Location			
NAD 1927 (NADCON CONUS) Colorado North 501			
Ground Elevation: 5362.0 RIG @ 5387.0ft (TBD)			
Northing	Easting	Latitude	Longitude
598486.08	2302283.40	40° 58' 16.000 N	104° 24' 19.519 W



T M
 Azimuths to True North
 Magnetic North: 8.86°
 Magnetic Field
 Strength: 53625.6snT
 Dip Angle: 67.63°
 Date: 1/29/2010
 Model: IGRF200510

Project: DJ - Hereford Ranch
 Site: Fox Creek 01-35H
 Well: Fox Creek 1-35H
 Plan: APD

SECTION DETAILS

Sec	MD	Inc	Azi	TVD	+N/-S	+E/-W	DLeg	TFace	VSec	Target
1	0.0	0.00	0.00	0.0	0.0	0.0	0.00	0.00	0.0	
2	6852.5	0.00	0.00	6852.5	0.0	0.0	0.00	0.00	0.0	
3	7602.5	90.00	144.38	7330.0	-388.2	278.0	12.00	144.38	474.0	
4	10534.7	90.00	144.38	7330.0	-2771.8	1985.5	0.00	0.00	3385.2	Fox Creek 1-35H (Target 1)
5	10731.6	90.00	120.75	7330.0	-2904.1	2129.6	12.00	-90.00	3580.0	Fox Creek 1-35H (Target 2)
6	11561.5	90.00	120.75	7330.0	-3328.4	2842.7	0.00	0.00	4374.6	Fox Creek 1-35H (Target 2)
7	11627.7	90.00	128.70	7330.0	-3366.1	2897.1	12.00	90.00	4439.1	Fox Creek 1-35H (BHL)
8	12514.4	90.00	128.70	7330.0	-3920.6	3589.2	0.00	0.00	5315.3	Fox Creek 1-35H (BHL)

TARGET DETAILS

Name	TVD	+N/-S	+E/-W	Northing	Easting	Latitude	Longitude	Shape
Fox Creek 1-35H (BHL)	7330.0	-3920.6	3589.2	594610.13	2305920.66	40° 57' 37.260 N	104° 23' 32.741 W	Point
Fox Creek 1-35H (Target 1)	7330.0	-2771.8	1985.5	595739.00	2304303.00	40° 57' 48.612 N	104° 23' 53.640 W	Point
Fox Creek 1-35H (Target 2)	7330.0	-3328.4	2842.7	595193.00	2305167.00	40° 57' 43.111 N	104° 23' 42.468 W	Point