

T6S, R97W, 6th P.M.

BERRY PETROLEUM COMPANY

Well location, OXY 21-10D, located as shown in the NE 1/4 SE 1/4 of Section 21, T6S, R97W, 6th P.M., Garfield County, Colorado.

BASIS OF ELEVATION

SPOT ELEVATION AT THE NORTHWEST CORNER OF SECTION 30, T5S, R95W, 6th P.M. TAKEN FROM THE FORKED GULCH QUADRANGLE, COLORADO, GARFIELD COUNTY, 7.5 MINUTE SERIES (TOPOGRAPHICAL MAP) PUBLISHED BY THE UNITED STATES DEPARTMENT OF THE INTERIOR, GEOLOGICAL SURVEY. SAID ELEVATION IS MARKED AS BEING 5966 FEET.

BASIS OF BEARINGS

BASIS OF BEARINGS IS A G.P.S. OBSERVATION.



Sheet 1j of 12



SCALE

CERTIFICATE

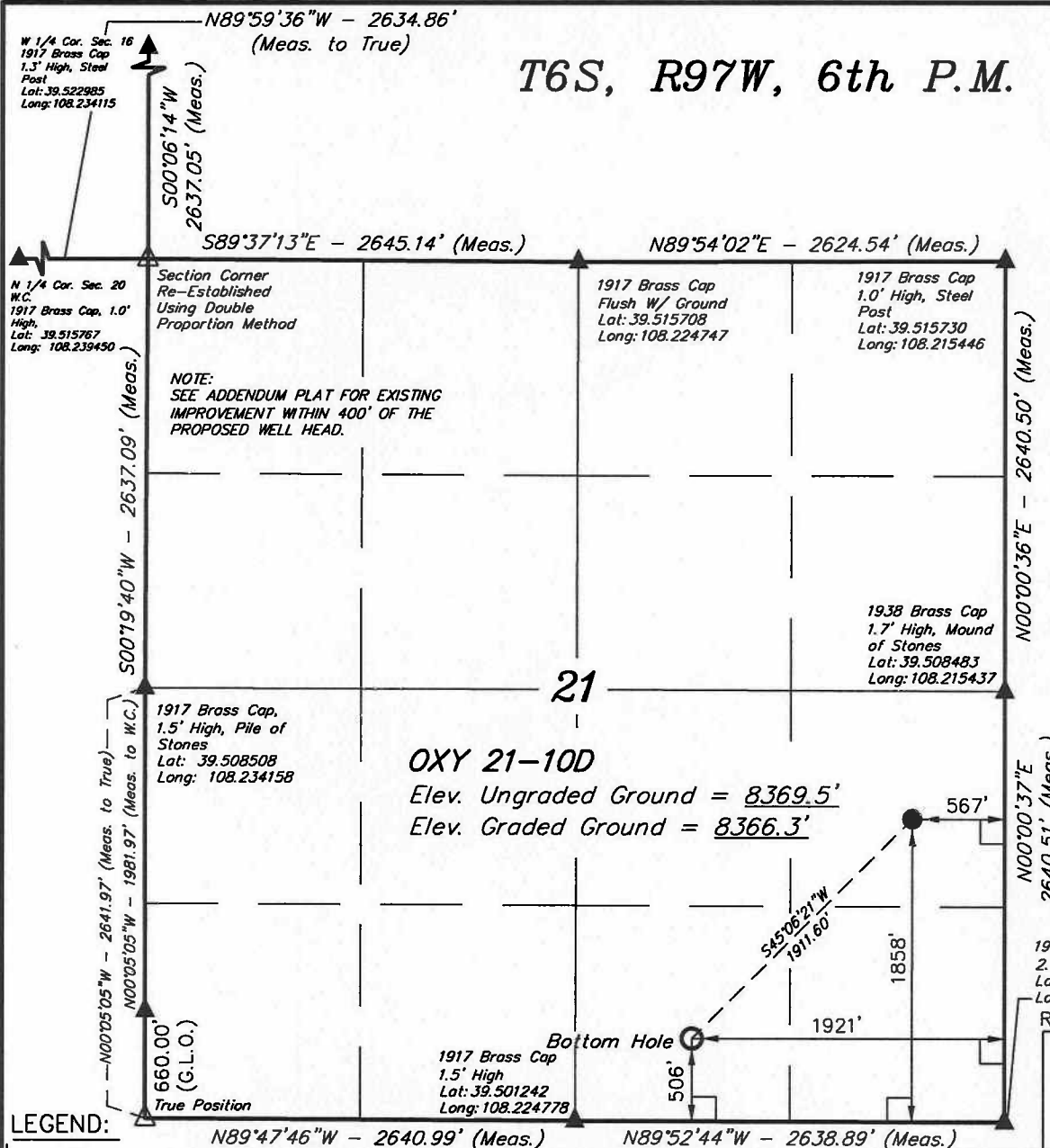
THIS IS TO CERTIFY THAT THE ABOVE PLAT WAS PREPARED AND LOCATION AS SHOWN WAS STAKED ON THE GROUND FROM FIELD NOTES OF ACTUAL SURVEYS MADE BY ME OR UNDER MY SUPERVISION AND THAT THE SAME ARE TRUE AND CORRECT TO THE BEST OF MY KNOWLEDGE AND BELIEF.

REGISTERED LAND SURVEYOR
REGISTRATION NO. 12492
STATE OF COLORADO

1917 Brass Cap
2.0' High
Lat: 39.501236
Long: 108.215428

REVISED: 08-18-09 C.H.

UINTAH ENGINEERING & LAND SURVEYING
85 SOUTH 200 EAST - VERNAL, UTAH 84078
(435) 789-1017



1917 Brass Cap
2.0' High
Lat: 39.501236
Long: 108.215428

1917 Brass Cap
1.5' High
Lat: 39.501242
Long: 108.224778

1917 Brass Cap
1.0' High, Steel Post
Lat: 39.515730
Long: 108.215446

1917 Brass Cap
Flush W/ Ground
Lat: 39.515708
Long: 108.224747

1938 Brass Cap
1.7' High, Mound of Stones
Lat: 39.508483
Long: 108.215437

1917 Brass Cap,
1.5' High, Pile of Stones
Lat: 39.508508
Long: 108.234158

NOTE:
SEE ADDENDUM PLAT FOR EXISTING
IMPROVEMENT WITHIN 400' OF THE
PROPOSED WELL HEAD.

Section Corner
Re-Established
Using Double
Proportion Method

N 1/4 Cor. Sec. 20
W.C.
1917 Brass Cap, 1.0'
High,
Lat: 39.515767
Long: 108.239450

W 1/4 Cor. Sec. 16
1917 Brass Cap
1.3' High, Steel Post
Lat: 39.522985
Long: 108.234115