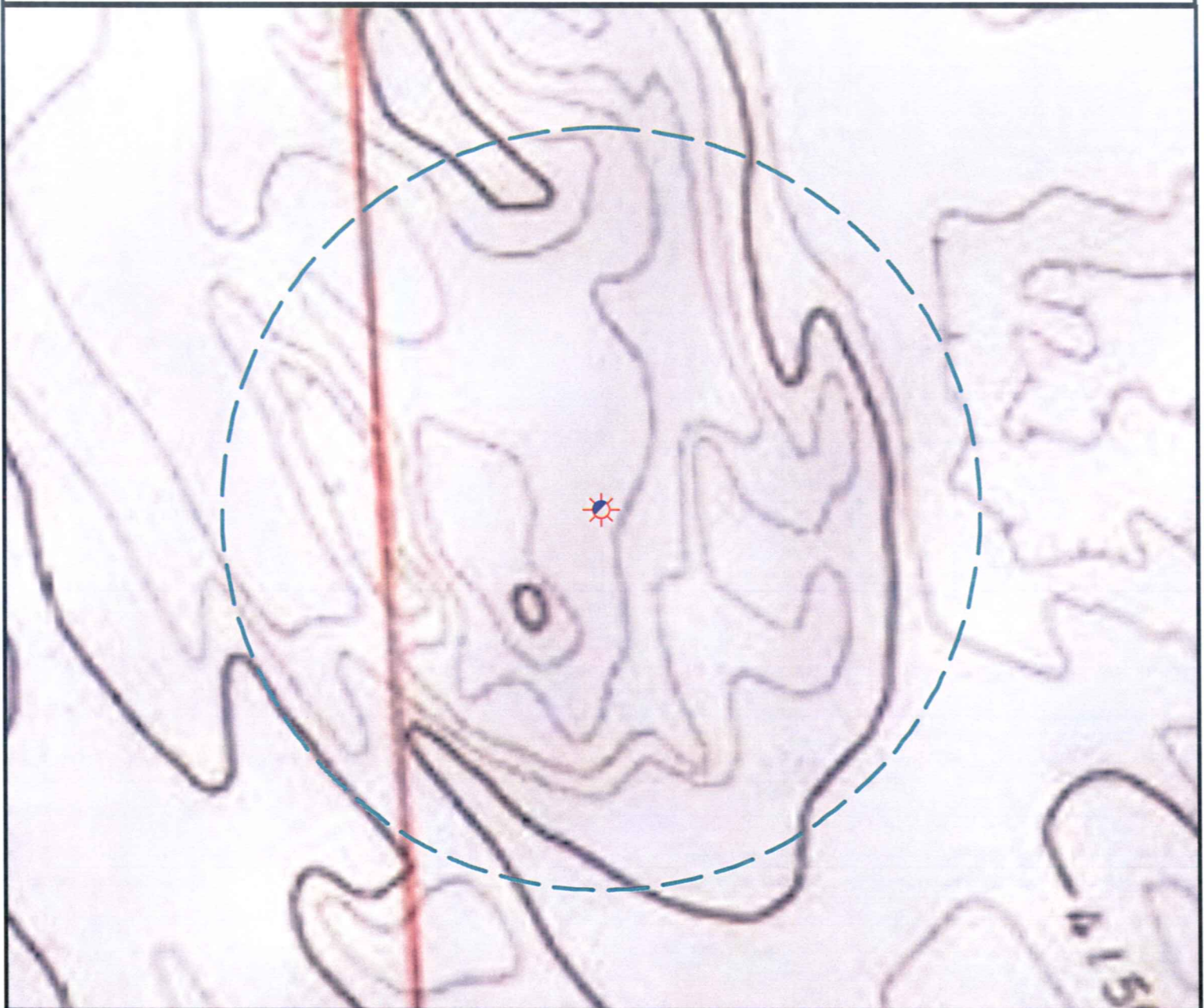


Hydrology Map



There are no surface waters within a 1000' radius of the proposed Oil & Gas location.



Legend

- | | | | |
|--|----------------------|--|-----------------------|
| | Proposed Well | | Building/Residence |
| | Existing Well | | Oil & Gas Equipment |
| | Water Well | | Water Body |
| | Pedestal | | Utility Box |
| | CattleGuard/Gate | | Railroad |
| | Bridge | | Fence |
| | ECD | | Overhead Power Line |
| | 1000' Radius | | Pipeline |
| | Facilities Enclosure | | Access Road |
| | | | Ditch/Canal |
| | | | Concrete Walled Ditch |

1000ft Radius Map of Surface Water and Riparian Areas

BLOMSTROM 09-12

Surface Location: T1S R47W S09

Field Date: 01/13/2010
 Drawing Date: 01/16/2010
 Drafter: JMK
 Checked By: CGR

Prepared for:
 Rosetta Resources
 Operating LP
 717 Texas Avenue, Ste. 2800
 Houston, TX 77002



Use our resources to find yours!
www.petro-fs.com

1801 W. 13th Ave
 Denver, CO 80204
 (303) 928-7128

111 E. Third Street
 Suite 207
 Rifle, CO 81650
 (970) 625-4740