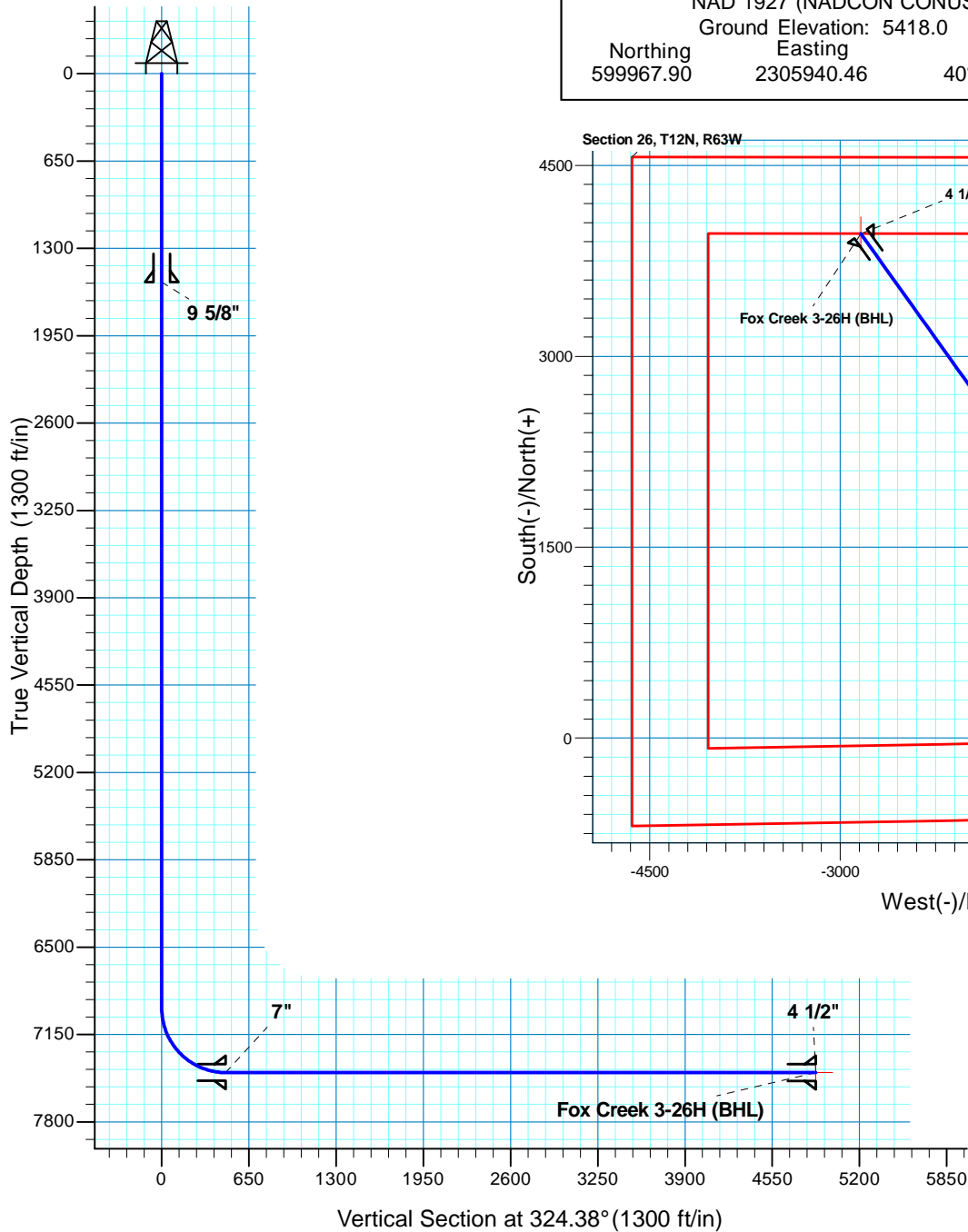


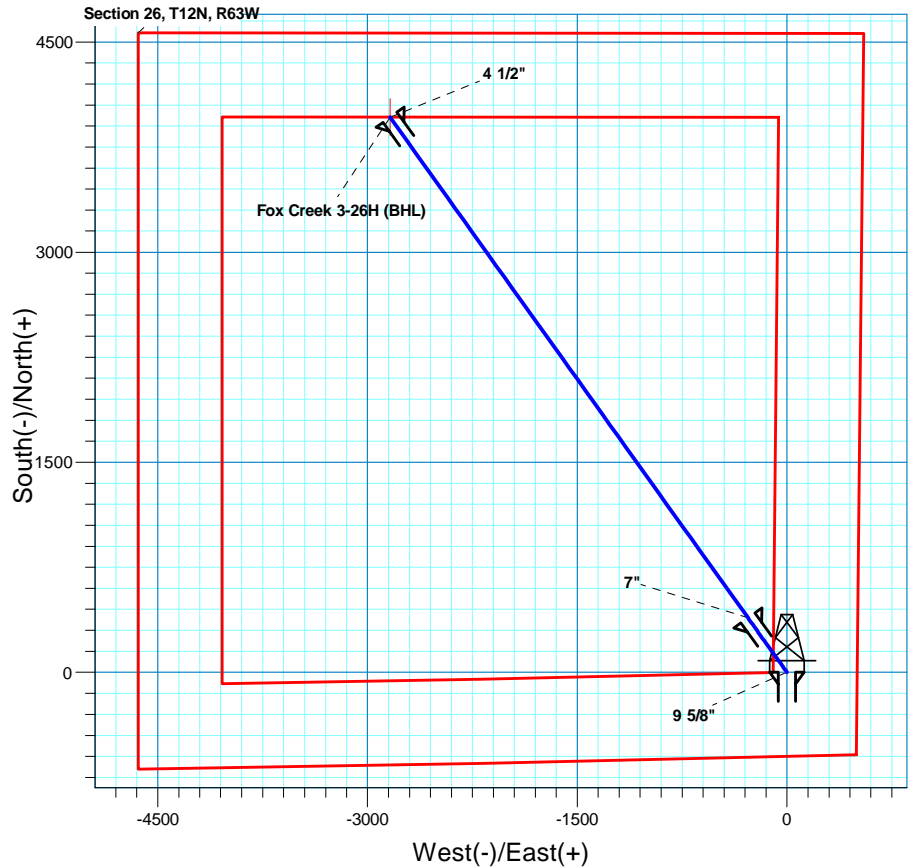
# Fox Creek 3-26H

Section 26 T12N R63W

Weld County, CO



Surface Location				
NAD 1927 (NADCON CONUS) Colorado North 501				
Ground Elevation: 5418.0 RIG @ 5443.0ft (TBD)				
Northing	Easting	Latitude	Longitude	
599967.90	2305940.46	40° 58' 30.191 N	104° 23' 31.610 W	



**T M**

Azimuths to True North  
Magnetic North: 8.86°

Magnetic Field  
Strength: 53628.6snT  
Dip Angle: 67.63°  
Date: 1/29/2010  
Model: IGRF200510

Project: DJ - Hereford Ranch  
Site: Fox Creek 03-26H  
Well: Fox Creek 3-26H  
Plan: APD

## SECTION DETAILS

Sec	MD	Inc	Azi	TVD	+N/-S	+E/-W	DLeg	TFace	VSec	Target
1	0.0	0.00	0.00	0.0	0.0	0.0	0.00	0.00	0.0	
2	6955.5	0.00	0.00	6955.5	0.0	0.0	0.00	0.00	0.0	
3	7705.5	90.00	324.38	7433.0	388.1	-278.1	12.00	324.38	477.5	
4	12102.8	90.00	324.38	7433.0	3962.5	-2839.2	0.00	0.00	4874.7	Fox Creek 3-26H (BHL)

## TARGET DETAILS

Name	TVD	+N/-S	+E/-W	Northing	Easting	Latitude	Longitude	Shape
Fox Creek 3-26H (BHL)	7433.0	3962.5	-2839.2	603894.65	2303051.93	40° 59' 9.341 N	104° 24' 8.629 W	Point