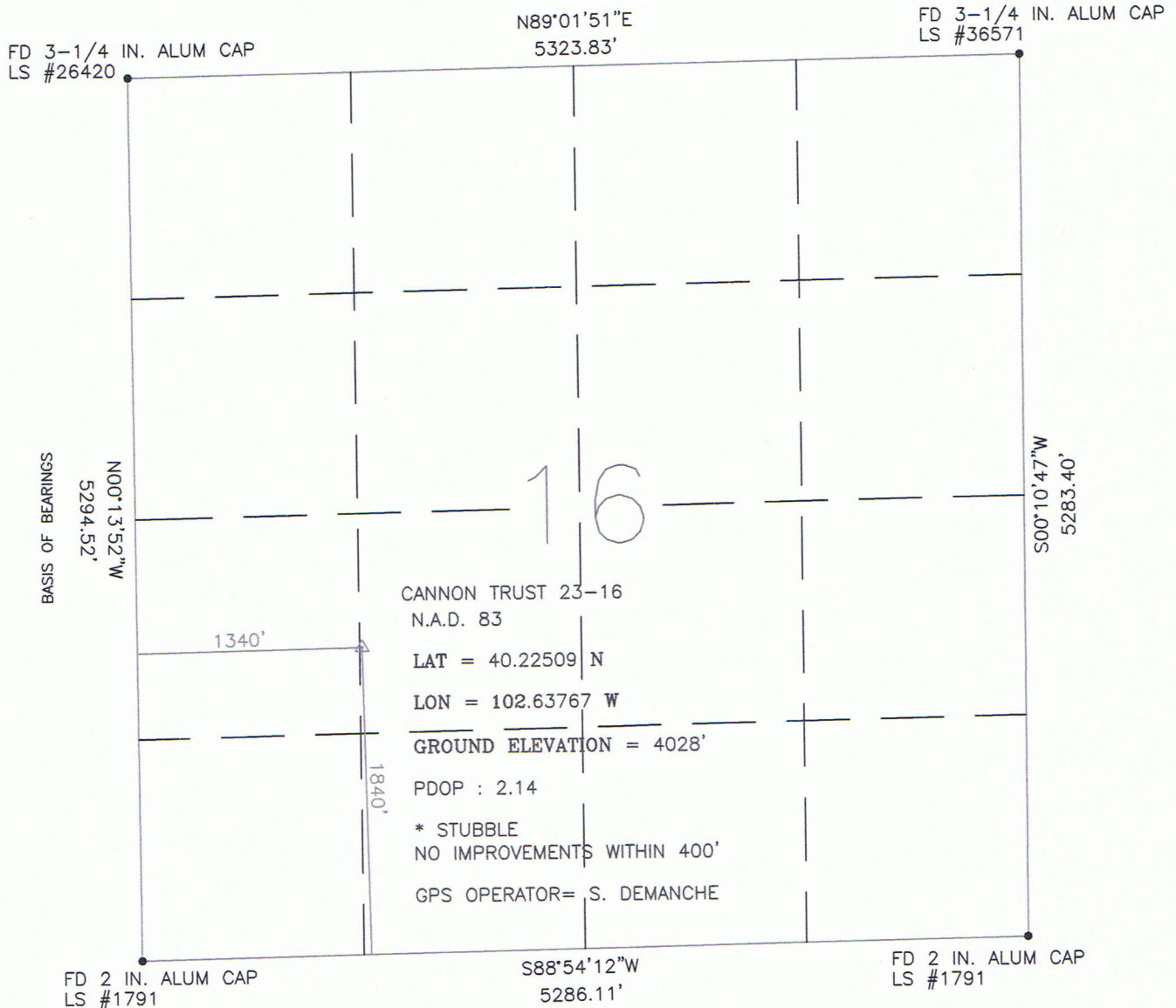


WELL LOCATION CERTIFICATE:

CANNON TRUST 23-16

SECTION 16, TOWNSHIP 3 NORTH, RANGE 47 WEST, 6TH P.M.
YUMA COUNTY, COLORADO



I HEREBY STATE TO PETROLEUM DEVELOPMENT CORP THAT THIS WELL LOCATION CERTIFICATE INDICATES THE WELL CANNON TRUST 23-16 TO BE LOCATED 1840' FSL AND 1340' FWL, SEC 16, T3N, R47W, 6TH P.M. YUMA COUNTY, STATE OF COLORADO

BASIS OF BEARINGS AS SHOWN ABOVE

GROUND ELEVATION SHOWN IS APPROXIMATE AND IS BASED ON AN OBSERVED GPS ELEVATION (NAVD 1988 DATUM)

LAT AND LON SHOWN ARE BASED ON AN OBSERVED GPS OBSERVATION (NAD 1983/92) WITH A PDOP VALUE LESS THAN SIX

ALL DISTANCES ARE FIELD MEASURED UNLESS OTHERWISE NOTIFIED

DISTANCES TO WELL ARE PERPENDICULAR TO SECTION LINES

FIELD DATE: 1/15/10

DRAWN DATE: 1/20/10

DRAWN BY: KER

THIS IS NOT A MONUMENTED BOUNDARY SURVEY, IT IS A DRAWING INTENDED TO DEPICT WELL LOCATION IN REFERENCE TO SECTION LINES

