

**SURFACE USE PLAN**  
**Exxon Mobil Corporation**  
**Freedom Unit 197-31B1 thru B10**  
**Section 31 T1S, R97W 6TH P.M.**  
**RIO BLANCO COUNTY, COLORADO**

- a. EXISTING ROADS: Shown on Topographic Map "A",
1. Topographic Map "A" shows the proposed well as staked.
  2. Beginning at the city of Rifle Colorado, proceed north on Colorado Highway #13 for approximately 18.8 miles to the junction of Rio Blanco County Road #5. Turn west on CR 5 for approximately 26.9 miles to the junction of Rio Blanco CR #24. Proceed west on CR #24 for approximately 1.9 miles to CR #31. Turn northwest on CR #31 for 2.3 miles to the junction of CR #83. Turn northeast on CR #83 for 0.2 miles to the existing access road to FRU 197-31A. Proceed (north-northeast) on the FRU 197-31A access road for approximately 1.2 miles. Turn south along ridge approximately 2,332' to the new wellpad. Flagging/ stakes have been set to define route the FRU 197-31B wellpad.
  3. All existing roads in the area of the drill site are shown on Topographic Map "A". Maintenance of county roads used for access to FRU 197-31B will be coordinated with Rio Blanco County Road & Bridge Department. Non-county roads will be maintained to BLM Manual 9113 standards. Maintenance will include grading, watering for compaction/ dust control, ditch maintenance and ROW treatment for noxious weeds. Weed control will be performed by certified applicator and conform to the Pesticide Use Proposals (PUP) filed with BLM.
  4. This is an exploration well.
- b. NEW or RECONSTRUCTED ACCESS ROADS: Approximately 2,332'+/- of new access road will be constructed to access the wellpad and production facilities. The location of the new access road is provided on Topo 'B' (attached).
1. Road Design Criteria. Access roads have been designed to BLM Manual Section 9113 standards for 'Local Road' classification. The new access road will feature a cleared width of approximately 40' with an 18' wide running surface. Typical access road cross-section is provided on Page 12. Road will be crowned with 2% cross-slope.
    - a. The maximum grade for the access road will not exceed 6 %.
    - b. Turnouts (10' x 100' w/ 50' transitional tapers) will be installed at 1000' intervals or will be intervisible, whichever is less. Preliminary turnout locations are shown on Topo 'B' and Figure 2 of the ISWMP for this wellpad (see attached).
    - c. The proposed road follows a natural ridge. No significant drainages are crossed with the new access road. Three 18" culverts will be installed to facilitate cross-drainage. Culvert locations are shown on ISWMP Figures 2 and 3 (Attached).
    - d. Road will be surfaced to provide 'all-weather' access using 6" compacted road base aggregate. Aggregate for road surfacing will be hauled over existing roads from commercial sources in Rio Blanco County (ie. Connell Gravel Pit).
    - e. No fence crossings/ cattle guards are required for this access road.
    - f. The proposed access road will be centerline (offset reference) staked prior to construction.

**SURFACE USE PLAN**  
**Exxon Mobil Corporation**  
**Freedom Unit 197-31B1 thru B10**

**Section 31 T1S, R97W 6TH P.M.**  
**RIO BLANCO COUNTY, COLORADO**

2. Road Construction & Maintenance. The new access roads will be constructed and maintained to BLM Manual Section 9113 standards for 'Local Road' classification.
  - a. Available topsoil will be removed from the disturbed area and stored in low profile stockpiles at the ROW limits as shown on the typical cross-section. Following construction of the main wellpad/ production facilities access road, the topsoil will be respread on the disturbed area (ditch and road slopes) and reseeded with an approved seed mixture. ROW reclamation will conform to the description provided in Section 'j' of this document.
  - i. Noxious weed control will be performed using licensed local subcontractor (reference Section J.2 of this document). Pesticide use will conform to applicable Pesticide Use Proposals (PUP) filed with the BLM for the Piceance Field Area.
  - b. Erosion control for the access road will be as indicated on ISWMP Figure 2 "Approx Construction Limits & Soil Disturbance Map" attached to this document. Ditches will be used to control drainage. Culverts will be installed as indicated. Contributing drainage areas/ flow velocities are low. Rip-rap will be installed at inlet/ outlet of culverts as indicated on the ISWMP figures (attached).
  - c. No major cuts/ fills (>10' ht) are required for construction of the access road. Road subgrade will be constructed using standard cut/fill and side borrow techniques from within the 40' construction ROW.
- c. LOCATION OF EXISTING WELLS
  1. Water Wells: See Topo C.
  2. Abandoned wells: See Topo C.
  3. Temporarily abandoned wells: None.
  4. Disposal Wells: None.
  5. Drilling Wells: None.
  6. Producing Wells: See Topo C.
  7. Shut-in Wells: See Topo C.
  8. Injection Well: None.
  9. Monitoring or observation wells: None.

**SURFACE USE PLAN**  
**Exxon Mobil Corporation**  
**Freedom Unit 197-31B1 thru B10**  
**Section 31 T1S, R97W 6TH P.M.**  
**RIO BLANCO COUNTY, COLORADO**

d. LOCATION OF EXISTING AND/OR PROPOSED FACILITIES:

Production Facilities will be located on the wellpad as per the attached 'Production Facilities Layout Plan' (Dwg WP197-31B-09-002). Unused areas of the wellpad will be reclaimed, as described in Section 'J' of this document, following drilling & completion operations. The following table describes the primary production facilities for this wellpad:

**Production Facilities Description**

| <b>Facilities</b>                  | <b>Design Standard</b> | <b>Description</b>                          | <b>Purpose</b>   |
|------------------------------------|------------------------|---|--|
| Dual Separator Skid                | ASME B31.3             | Enclosed production equipment including:    |  |
|                                    | ANSI 300               | 1) 53" x 12' 3-phase production separator   | Separate gas, condensate, and water from wells not in the test separator and to measure gas production from all wells (including the well in test); gas will flow through the production separator's gas orifice meter prior to leaving the well pad; this will serve as the gas sales measurement |
|                                    | ANSI 300               | 1) 30" x 8' 3-phase test separator          | Test to determine gas, condensate, and water rates from individual well in the separator; Orifice meter for gas, Turbine meter for condensate, magnetic meter for water.   |
| Flowline from Wellhead to Manifold | ASME B31.3             | 3" XXH Fusion bonded externally coated pipe | Carry full well stream production to manifold  |
| Manifold                           | ASME B31.3             | Multiwell manifold/ header system           | Allows full well stream from each well to flow either to the test separator or the production separator  |
| Gas Flowline                       | ASME B31.3             | On pad Flowline                             | Flow gas from the separator to the gas gathering system tie in point on the edge of location   |
| Gas Flowline                       | ASME B31.8             | Off pad Flowline                            | Flow gas from the pad into the gas gathering system  |
| Liquids Flowlines                  | ASME B31.3             | On pad flowlines                            | Flow combined liquids from onsite separation to tie in point on edge of location   |
| Liquids Flowlines                  | ASME B31.4             | Off pad flowlines                           | Flow combined liquids into the gathering system to the PA battery.   |

**SURFACE USE PLAN**  
**Exxon Mobil Corporation**  
**Freedom Unit 197-31B1 thru B10**  
**Section 31 T1S, R97W 6TH P.M.**  
**RIO BLANCO COUNTY, COLORADO**

- i. The proposed facilities will consist of an underground flowline from each wellhead to a manifold system. The manifold system will allow full well stream from each well to flow either to the test separator or the production separator. The 3-phase test separator will be used to verify gas, condensate, and water rates from the individual well in the separator. The 3-phase production separator will be used to separate gas, condensate, and water from the remaining wells. The daily production from each well will be allocated back based on each well's respective quarterly well test.

- ii. FLOWLINES:

Gas from the sales measurement unit will then flow into a new eight (8) inch carbon steel buried flowline and off the well pad. This flowline will tie into the Ryan Gulch Gas Trunkline located approximately 280' northwest of the wellpad (see Topo 'D' – attached).

Condensate and produced water from the separator skid will flow into a four (4) inch carbon steel combined liquids line to be buried to the tie-in point on the Ryan Gulch Combined Liquids Trunkline located 280' northwest of the wellpad (see Topo 'D' – attached). Condensate from the pad will be sold via lact unit at the recently installed Black Sulfur Separation Facility (Piceance Phase 1). Condensate production rates of individual wells will be allocated back based on condensate production measurements taken via the test separator.

This configuration of facilities is as agreed to in the 'Measurement & Reporting Plan for Piceance Basin Development' dated February 16, 2006.

Flowline Construction. The flowlines will be buried in a common trench with minimum 3' of cover. BMPs (shown on attached ISWMP Figure 2) will be utilized to minimize potential impacts from the pipeline construction. Woody debris material will be cleared and rolled to the downgradient side of the right-of-way where feasible to act as brush barrier. Wattles will be installed along the southern portion of the flowline alignment where the pipe ties into an existing line. Topsoil will be stored on one side of the proposed trench (the upgradient side where feasible) and will be kept within the existing right-of-way. Topsoil will be kept separate from the spoils. Spoil stockpiles from trench excavation will either be stored between the topsoil and the trench or on the opposite side of the trench from the topsoil. Wattles may be installed on the downgradient boundary of stockpiles when there is potential for sediment to leave the pipeline right-of-way. Once the pipe has been installed, the trench will be backfilled with the excavated spoils and compacted as required by the specifications. The topsoil will then be spread back across the disturbed area. Water bars will not be installed on this pipeline due to the relatively flat slope (< 2 %).

The disturbed area will be reseeded, mulched and crimped as part of final reclamation using a BLM-approved seed mixture. Seeding success will be periodically evaluated. Successful vegetation is expected within three growing seasons. Reseeded areas will be inspected periodically to ensure success. In the event that seeding does not appear to germinate, areas will be reseeded.

**SURFACE USE PLAN**  
**Exxon Mobil Corporation**  
**Freedom Unit 197-31B1 thru B10**  
**Section 31 T1S, R97W 6TH P.M.**  
**RIO BLANCO COUNTY, COLORADO**

iii. Surface Disturbance (linear facilities):

| Purpose   | Length | X | Width | = Square Feet | Surface Area Disturbed<br>(43560 ft <sup>2</sup> /acre) |
|---|--------|---|-------|---------------|---|
| Flowline(s)<br>8" Gas<br>4" Comb Liq<br>4" PWDD | 280'   | X | 50'   | 14,000        | 0.4 acres   |
| Road  | 2332'  | X | 40'   | 93,280        | 2.2 acres   |
| Total Planned Disturbance:                      |        |   |       |               | 2.6 Acres   |

e. LOCATION AND TYPE OF WATER SUPPLY.

Fresh water will be trucked from permitted ExxonMobil surface water storage facilities: Love Ranch Fresh Water Storage Pond (Sec 9, T2S, R97W) and B&M Fresh Water Storage Pond (Sec 26, T2S, R97W). Water will be hauled to the location using existing roads as shown on Drawing No. WP197-31B-09-001 (attached). No new roads will be constructed for purpose of water haulage.

Produced water used for drilling & completion operations will be supplied from the nearby ExxonMobil Produced Water Distribution and Disposal System (PWDD) trunkline (see Topo 'D'). A 4" pipeline will be installed in the same trench with the gas and produced water collection pipelines described under Section 'd' (above). No additional disturbance will be required.

Anticipated water sources and volumes are provided on Page 13.

f. CONSTRUCTION MATERIALS:

- Wellpad sub-grade will be constructed by normal cut and fill methods. Cut has been balanced to meet fill requirements. No offsite borrow will be required to construct the subgrade. Construction techniques are described in Section 'i' of this document.
- Surfacing material will be hauled over existing roads from commercial sources in Rio Blanco County (ie Connell Gravel Pit).

g. METHODS FOR HANDLING WASTE:

Waste materials will be contained and disposed of as follows:

- Drilling fluids will be contained in lined pits or steel tanks on the wellpad during drilling operations. The reserve and dry cuttings pit/ trenches will be lined using synthetic liner with thickness of 24 mil.

Drill cuttings will be disposed of in the reserve pit or dry cuttings pit/trenches and buried with at least 4' of cover. If needed to dry the cuttings and accelerate the pit

**SURFACE USE PLAN**  
**Exxon Mobil Corporation**  
**Freedom Unit 197-31B1 thru B10**

**Section 31 T1S, R97W 6TH P.M.**  
**RIO BLANCO COUNTY, COLORADO**

closure process, the cuttings may be solidified by mixing a drying agent. Excess pit liner above 'free board' elevation will be removed and disposed as trash (see Section 4 below).

If cuttings have been removed from the reserve pit and relocated for disposal, the reserve pit will be relined (with min 24 mil reinforced liner) before completion operations begin. Cuttings are transferred directly from the reserve pit to the cuttings pit and are not stored directly on the wellpad.

2. In the event that ExxonMobil Corporation has used diesel in the drilling mud system and the drill cuttings/fluids contain greater than 1% diesel net weight, these cuttings will be transported via tanker truck over existing roads a state approved disposal site. The BLM White River Resource Office (Petroleum Eng Tech – Bill Kraft at 970-878-3873) will be contacted prior to testing the cuttings from our first well so the BLM may witness the testing procedures. Currently disposal sites on our approved list in the area are:

Ace Oilfield Disposal, Inc. (Vernal, UT )  
RN Industries (Roosevelt, UT)

3. All mud cuttings will meet the requirements of the COGCC before being buried on-site. All cuttings will have all harmful properties of the waste reduced or removed and the mobility of leachate constituents reduced or eliminated.
4. Trash, waste paper, and other garbage will be contained in (closed) metal trash dumpsters on the wellpad site and hauled (by third party contract trucking) to the Rio Blanco County Landfill.
5. Salts that are not used in the drilling fluid will be removed from the location by the supplier. Empty sacks are placed in the trash for disposal to landfill (reference Item 6 above).
6. Sewage from the trailer houses will be disposed of in a manner meeting the Rio Blanco County Regulations, as under the guidance of Colorado Water Quality Control Commission, Department of Public Health and Environment.

Sewage will normally be stored, on-site, in above ground septic tanks. Contents are periodically hauled to municipal water treatment plants at Meeker and Craig, Colorado for disposal.

7. Chemicals that are not used in the drilling and completion of the well will be removed from the location by the supplier. Used drums are returned to the vendor for reuse.
8. Waste oils are handled by a third party contractor during oil change operations and removed from the wellpad for recycling. Oil filters, oily rags and other hydrocarbon contaminated wastes are stored onsite in 55 gallon waste disposal drums and removed from the wellpad by third party contractor for disposal at a licensed facility. Used glycols are stored in 55 gallon drums for collection by a third party contractor and removed from the wellpad to a licensed disposal/ recycling facility. All drums containing waste oils/ used glycols are stored in a lined/ bermed area (on the wellpad) with 110% (volume) storage capacity.
9. Drilling fluids will be removed by vacuum truck to another active location and/or will be allowed to evaporate in the reserve pit until the pit is dry enough for back filling. Water produced during tests will be disposed of in the reserve pit as per Onshore Order 7. Oil produced during tests will be stored in test tanks until sold, at which time it will be hauled from the site. In the event fluids in the pit do not evaporate in a

**SURFACE USE PLAN**  
**Exxon Mobil Corporation**  
**Freedom Unit 197-31B1 thru B10**  
**Section 31 T1S, R97W 6TH P.M.**  
**RIO BLANCO COUNTY, COLORADO**

reasonable time, the fluids will be hauled to a state approved disposal site or will be mechanically evaporated.

Pits containing water that would provide a medium for breeding mosquitoes will be treated to control mosquito larvae. Treatment will include application of Bti (*Bacillus thuringiensis v. israelensis*) or other approved mosquito larvacide.

10. The reserve pit will be fenced on three sides with a 4-strand barbed, woven wire fence, or portable 'cattle panels' during drilling and on the fourth side after the rig is released. Alternate barrier types may also be used upon approval of the BLM. In order to prevent use by migratory birds, reserve pits that store or are expected to store fluids which may pose a risk to such birds, during completion and after completion activities have ceased, shall be netted. If any other means than netting are used, ExxonMobil will notify BLM prior to beginning completion activities.
  11. Water separated during production operations will be transported from the site via dedicated pipeline (reference Section 'd' above) and combined with water produced from other active wellpads in the field area to the Piceance Produced Water Disposal (PWD) system located at the ExxonMobil Black Sulphur separation facility. The PWD system will pressurize the produced water for disposal at permitted water injection wells located in the PCU wellfield area or for reuse in drilling & completion operations.
- h. ANCILLARY FACILITIES: No offsite camps, airstrips, etc. will be constructed.
- i. WELL SITE LAYOUT NARRATIVE & PLAT:
1. Figure 1 (Sheets 1 - 5) provides the proposed well site layout and earthwork requirements. Overall disturbance limits of the wellpad, including BMP installation, are estimated at 9.8 acres. Disturbance limits area shown on attached ISWMP Figures 2 and 3.
  2. All equipment and vehicles will be confined to the access road and pad area outlined in Topographic Maps "A" and "B".
  3. Mud pits in the active circulation system will be steel pits. The reserve and fresh water pits will be lined with synthetic liner with thickness of 24 mil.
  4. Wellpad Construction:
    - a. If snow is encountered, the snow will be removed before construction begins or the topsoil is disturbed and placed downhill of the topsoil stockpile location.
    - b. All available topsoil will be stripped on well locations and access roads, prior to construction, and stockpiled for use in reclamation of the site. Topsoil stockpile will be clearly segregated from any spoil pile and placed in location shown on attached Figure 1 – 'Wellsite Grading Plan'. Topsoil depth at this site is estimated at 6". Topsoil will be temporarily seeded and covered with a wildlife friendly biodegradable erosion control blanket. Additionally, wattles will be installed on the downgradient end of the topsoil pile as indicated on attached ISWMP Figures 3 'Proposed Wellpad BMP Drawing'.
    - c. Wellpad subgrade will be constructed using cut/ fill methods to achieve the required site profile. Embankments may be layer placed or constructed by side casting/ end dumping. The upper 24" of embankments will be installed in compacted layers to achieve a minimum 95% modified proctor density (ASTM D 1557). Rock, if

**SURFACE USE PLAN**  
**Exxon Mobil Corporation**  
**Freedom Unit 197-31B1 thru B10**  
**Section 31 T1S, R97W 6TH P.M.**  
**RIO BLANCO COUNTY, COLORADO**

encountered, will be placed in the lower portions of the embankment. No offsite borrow will be required for subgrade construction at this site. Excess cut will be stockpiled in areas shown on attached Figure 1 – 'Wellsite Grading Plan'. Cut/ fill slopes will be constructed to achieve stable angles of 1h:1v (cut) and 1.5h:1v (fill).

- d. Aggregate surfacing (road base material) will be hauled, placed, and compacted to achieve necessary thickness to provide 'all weather' surface. Aggregate will be obtained from commercial sources in Rio Blanco County (ie Connel Gravel Pit).
- 5. BMP's associated with stormwater management / erosion control will be applied to the site during construction & drilling/ completion operations. Wattles will be used for perimeter runoff control around the wellpad and stockpiles. Following construction, the need for temporary stabilization measures for cut/ fill slopes will be evaluated based upon rock content and degree of slope. In areas of rock content > 50%, no erosion control measures on slopes will be implemented and primary BMP will be wattles at the toe of the fill slope. Where < 50% rock content, surface roughening and erosion control blankets will be used to stabilize the fill slopes. If field conditions do not allow for effective surface roughening or installation of erosion control blankets, hydromulching may be used. If hydromulching is used, the seed will be sprayed at double the drill seeding rate followed by application of hydromulch. Location & type of BMP's are provided on attached Figure 3 ' Proposed BMPS ISWMP Drawing'. No offsite dikes or ditches are required to control runoff to/ from the wellpad.

j. PLANS FOR SURFACE RECLAMATION:

- 1. Upon completion of the drilling & well completion operations and disposal of trash/debris as described above, pits will be backfilled and recontoured as soon as practical after they have dried. Drill cuttings will be disposed of in the reserve pit and/ or the dry cuttings pits/ trenches. Cuttings will be buried with at least 4' of cover. Excess pit liner above 'free board' elevation will be removed and disposed as trash (See Section 4 below).

If cuttings have been removed from the reserve pit and relocated for disposal, the reserve pit will be re-lined with a 24 mil (min thickness) reinforced liner prior to completion operations. Cuttings are transferred directly from the reserve pit to the cuttings pit and are not placed directly on the wellpad.

- 2. Unneeded disturbed surfaces remaining after drilling and completion operations will be shaped to match the surrounding terrain and seeded as specified by the BLM. Site specific BMP's associated with 'interim reclamation' will be applied per the ISWMP for this site. The specific measures described below will also be addressed in the ISWMP.
  - a. Areas required for production operations are shown on attached 'Interim Reclamation Plan' for FRU 197-31B (attached ISWMP Figure 5). Approximately 3.1 acres will be required to support production operations. Earthwork for reclamation of unneeded disturbed area (6.0 acres) will normally be completed with 6 months of well completion, depending upon season.
  - b. Regrading will consist of cut/ fill operations to return disturbed areas not required for production to approximate original contour (as shown on the attached 'Interim Reclamation Plan'). Stockpiled spoil will be incorporated into the regraded area in locations which will be available for final recontouring upon well abandonment. Shale/ rock will be placed in the lower portions of filled areas as appropriate. Following regrading, areas compacted by earthworks will be scarified to a



**SURFACE USE PLAN**  
**Exxon Mobil Corporation**  
**Freedom Unit 197-31B1 thru B10**  
**Section 31 T1S, R97W 6TH P.M.**  
**RIO BLANCO COUNTY, COLORADO**

minimum depth of 6" and the stockpiled topsoil will be distributed evenly across the reclaimed area.

- c. Following topsoil placement, the seedbed will be prepared by disking or ripping. The area will be seeded with the approved BLM seed mixture for 'Pinion Juniper Woodlands' (Seed Mixture #3). Seed will be certified and free of noxious weeds. Seed certification tags will be submitted to the area manager. Seed will be drilled 'on contour' to a depth no greater than ½". In areas too steep to operate the seed drill, seed will be broadcast at double the seeding rate and harrowed into the soil. Alternatively, hydromulching may be used in these areas. If hydromulching is used, the seed will be applied first at double the seeding rate prior to hydromulch application. No soil treatments are planned for this site. All slopes 3(h):1(v) or steeper will be covered with wildlife-friendly biodegradable fabrics (such as, but not limited to, jute blankets, Curlex, etc.).

Erosion control BMP's will be used along the pipeline ROW during construction and until successful vegetation has been established in the disturbed area as indicated on ISWMP Figure 2 (Attached).

- d. Following seeding and placement of biodegradable fabrics (as required), woody debris cleared during initial construction will be pulled back over the recontoured/partially reshaped areas to act as flow deflectors and sediment traps. Available woody debris will be evenly distributed so as not to account for more than 20% of total ground cover (or 3 – 5 tons/ acre).
- e. Immediately after interim reclamation is concluded, livestock grazing will be excluded from all reclaimed portions of the wellpad by installation of a four-strand BLM Type-D barbed wire fence with braced wooden corners. A BLM-specified cattleguard will be placed at the time of fence construction for vehicle access to the wellpad and production facilities. Once reclaimed plant species are fully established, the fence and cattle guard will be completely removed after a minimum of 2 growing seasons.
- f. BMP's during interim reclamation will include surface roughening, seeding and erosion control blankets. Runoff from the regraded areas will continue to be controlled at the perimeter of the disturbed area using wattles. These measures will continue to be maintained around the perimeter of the site until stabilization of the reclaimed areas has been achieved.

Plans for implementation of specific BMP's on the wellpad, access road and pipeline during 'interim' reclamation are shown on ISWMP Figure 5 (attached).

- i. Noxious weed control will be performed 1 – 2 times annually (during the growing season). Weeds to be treated include houndstongue, black henbane mullein, spotted/ Russian knapweed, leafy spurge and toadflax. Applications will be performed by certified pesticide applicator and conform to approved BLM Pesticide Use Proposals (PUP) specific to the Piceance Creek field area.
- g. Upon final abandonment of the wells, ExxonMobil will return all remaining disturbed areas to approximate original contour and rehabilitate the road and location to a satisfactorily revegetated, safe and stable condition per BLM specifications. If final reclamation requires disturbance > 1 acre, stormwater permit coverage under the State's stormwater program will be re-opened.
- i. Topsoil will be removed from remaining sideslope and temporarily regraded areas (interim reclamation) and stockpiled for redistribution on final graded areas.

**SURFACE USE PLAN**  
**Exxon Mobil Corporation**  
**Freedom Unit 197-31B1 thru B10**

**Section 31 T1S, R97W 6TH P.M.**  
**RIO BLANCO COUNTY, COLORADO**

- ii. Natural drainage patterns will be restored and stabilized by application of BMP's per approved SWMP for this site. These BMP's include surface roughening, permanent seeding and may include use of erosion control blankets following regrading operations. Storm runoff from the regraded areas will continue to be controlled using wattles and other appropriate BMP's until stabilization of the reclaimed area has been achieved.
  - iii. Procedures for reseeding & mulching described for interim reclamation (ref Paragraphs (c) and (d) above ) will also be followed for final reclamation of the site.
  - iv. Livestock will be excluded from the final reclaimed wellpad areas by installation of a four-strand BLM Type-D barbed wire fence with braced wooden corners, unless otherwise instructed by the BLM.
  - h. Rehabilitation operations (both interim & final) will start in a timely manner following the completion of operations, typically the following construction season. Site specific BMP's will be applied as described above. Additional reclamation efforts will be undertaken if, after the first growing season, there are no positive indicators of successful establishment of seeded species (ie germination). Reclamation efforts will continue so as to ensure a sufficient vegetative ground cover from reclaimed plant species within (3) three growing seasons after the application of seed.
- k. **SURFACE OWNERSHIP**
- 1. Surface and minerals ownership at the wellpad is the Bureau of Land Management (BLM). Agency Address:  
  
Bureau of Land Management, White River Field Office, 220 E Market St., Meeker Co. 81641. Telephone: 970-878-3800.
- l. **OTHER INFORMATION**
- 1. The proposed wellpad is located in soil map unit 73. Map unit 73 is the Rentsac channery loam on 5 to 50% slopes. The proposed access road and flowline locations are also located in map unit 73.  
  
Fragile soils, defined by the BLM as saline soils occurring on slopes greater than 35 percent, are indicated along approximately 200 feet of the access road (see Figure 2). Several measures have been used to properly stabilize soils and retain soil productivity. BMPs that will be utilized include installing wattles and brush barriers during construction, limiting the time of construction to the extent feasible, covering and seeding topsoil piles associated with the well pad, and seeding, mulching and crimping after construction has been completed.  
  
Primary vegetation is sage brush, grass and pinon, and juniper trees.
  - 2. An archaeological investigation will be conducted and report prepared for the proposed access road and well site. Information will be submitted to the BLM.
  - 3. The onsite for this pad was conducted in October, 2005. The well site name at the time of the onsite was FRU 197-31B.
  - 4. The proposed well pad is located near the crest of a ridge. Primary drainage from the wellpad/ access road flows southeast and southwest from the ridge area to

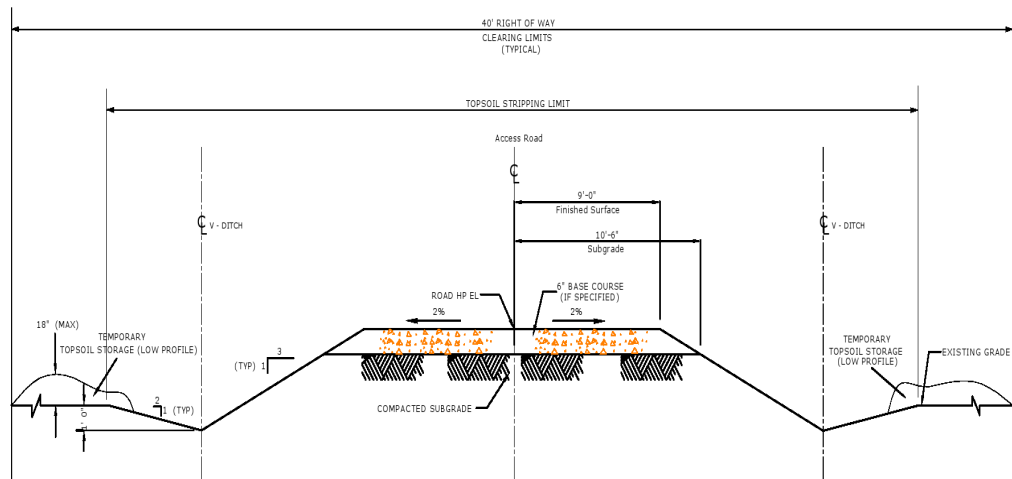
**SURFACE USE PLAN**  
**Exxon Mobil Corporation**  
**Freedom Unit 197-31B1 thru B10**

**Section 31 T1S, R97W 6TH P.M.**  
**RIO BLANCO COUNTY, COLORADO**

unnamed intermittent drainages discharging to Ryan Gulch. Ryan Gulch is an intermittent drainage which flows easterly to Piceance Creek.

5. Total surface maximum surface disturbance is estimated at 12.4 acres including the drilling/ production facility pad, access road, flowlines and installation of storm water management BMP's. Maximum disturbed area is indicated on ISWMP Figure 2 (attached).

**SURFACE USE PLAN**  
**Exxon Mobil Corporation**  
**Freedom Unit 197-31B1 thru B10**  
**Section 31 T1S, R97W 6TH P.M.**  
**RIO BLANCO COUNTY, COLORADO**



**TYPICAL SECTION ACCESS ROAD**

**NOTES:**

1. See BLM "GOLD Book" for typical "embankment" and "sidehill" section requirements.
2. Road minimum top width 18' unless otherwise noted.
3. Clear all areas within Right Of Way.
4. Grubbing/Stripping shall be limited to the area shown.
5. Topsoil stripping depth shall be an average of 4".
6. Material and compaction of road base shall be in accordance with project specification.
7. Use excavated ditch material to shape subgrade.

| p1   | 25 APRIL 08 | Modified ROW Width   | ---- | SB    | SB      | WFD      |
|------|-------------|----------------------|------|-------|---------|----------|
| p    | 26 MAR 08   | Preliminary          | ---- | SB    | SB      | WFD      |
| REV. | DATE        | REVISION DESCRIPTION | ENG. | DRAWN | CHECKED | APPROVED |

**Typical Wellpad Access Road**  
**Cross - Section**  
**Piceance Development Project**

**EXXONMOBIL**

Drawn by: SB      Checked by: SB

Date: April 25, 2008      Scale: N.T.S.

Drg No. PC-08-020

**SURFACE USE PLAN**  
**Exxon Mobil Corporation**  
**Freedom Unit 197-31B1 thru B10**  
**Section 31 T1S, R97W 6TH P.M.**  
**RIO BLANCO COUNTY, COLORADO**

**Water Source & Delivery Information (Per BLM Onshore Order #1)**

| Water Use Operation | Volume per Well (Bbls -Est)  | Volume Per Wellpad (Bbls -Est) | Water Type     | Water Delivery Method | Water Source   | Permit Number                | Comments   |
|---------------------|------------------------------|--------------------------------|----------------|-----------------------|--|------------------------------|--|
| Construction        | N/A                          | 20,000                         | Fresh          | Truck                 | ExxonMobil B&M and Love Ranch Fresh Water Reservoirs | Appropriation Number 98CW259 | See Haul Route Map (Attached)                    |
| Dust Abatement      | N/A                          | 10,000                         | Fresh          | Truck                 | ExxonMobil B&M and Love Ranch Fresh Water Reservoirs | Appropriation Number 98CW259 | See Haul Route Map (Attached)                    |
| Drilling            | 10,000 (Surface Section)     | 100,000                        | Fresh          | Truck                 | ExxonMobil B&M and Love Ranch Fresh Water Reservoirs | Appropriation Number 98CW259 | See Haul Route Map (Attached)                    |
| Drilling            | 24,000 (Int & Prod Sections) | 240,000                        | Produced (SWD) | Pipeline              | PCU PWD System                                       | N /A                         | Pipeline will tie-into FRU 197-31A PWD pipeline. |
| Completion          | 50,000                       | 500,000                        | Produced (SWD) | Pipeline              | PCU PWD System                                       | N/A                          | Pipeline will tie-into FRU 197-31A PWD pipeline. |

**SURFACE USE PLAN**  
**Exxon Mobil Corporation**  
**Freedom Unit 197-31B1 thru B10**  
**Section 31 T1S, R97W 6TH P.M.**  
**RIO BLANCO COUNTY, COLORADO**

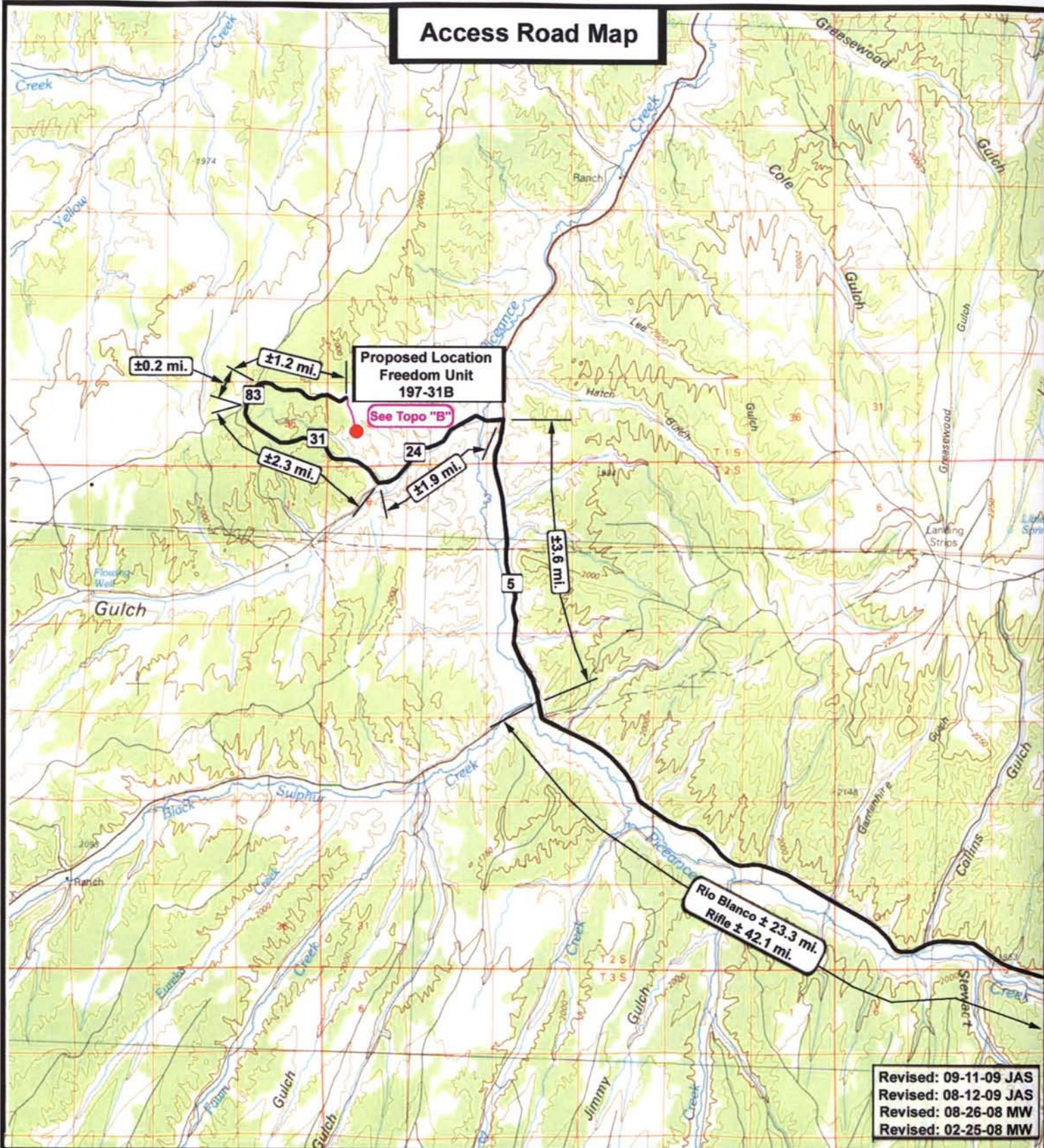
**ATTACHMENTS**

---

| <b>TITLE</b>  | <b>DESCRIPTION</b>                                    | <b>DATE/ REVISION</b> |
|---|---|-----------------------|
| <b>Topographic Maps</b>                                   |   |                       |
| Topographic Map 'A'                                       | Access Map  | 9/11/2009             |
| Topographic Map 'B'                                       | Proposed Access Road                                  | 9/11/2009             |
| Topographic Map 'C'                                       | Area Map  | 8/12/2009             |
| Topographic Map 'D'                                       | Flowline Map  | 9/11/2009             |
| Water Haul Route – Dwg<br>WP197-31B-09-001                | Fresh Water Haul Route &<br>Distances to Wellpad      | 8/18/2009             |
| <b>Wellpad Plans</b>                                      |   |                       |
| Location Layout (Sht 2)                                   | Wellpad Grading Plan                                  | 8/07/2009             |
| Cross Sections (Sht 3)                                    | Wellpad Cross-Sections &<br>Quantities                | 7/31/2009             |
| Typical Rig Layout (Sht 4)                                | Wellpad Plan View                                     | 7/31/2009             |
| Finish Grading Plan (Sht 5)                               | Wellpad Finish Grade Elevations                       | 7/31/2009             |
| Production Facilities Plot Plan –<br>Dwg WP197-31B-09-002 | Wellpad Facilities Layout                             | 8/31/2009             |
| <b>Photos</b>   |   |                       |
| Wellpad Photo 1 & 2                                       | Centerstake & Access                                  | 8/18/2009             |
| Wellpad Photo 3 & 4                                       | North & East View                                     | 8/18/2009             |
| Wellpad Photo 5 & 6                                       | South & West View                                     | 8/18/2009             |
| <b>Storm Water Management Exhibits (BMP's)</b>            |   |                       |
| ISWMP Figure 2  | Project Construction Limits & Soil<br>Disturbance Map | 9/11/2009             |
| ISWMP Figure 3  | Wellpad Proposed BMP Drawing                          | 9/23/2009             |
| ISWMP Figure 5  | Interim Reclamation Plan BMP<br>Drawing               | 9/23/2009             |



# Access Road Map



Revised: 09-11-09 JAS  
 Revised: 08-12-09 JAS  
 Revised: 08-26-08 MW  
 Revised: 02-25-08 MW

**Exxon Mobil Corporation**

**Freedom Unit 197-31B  
 SEC. 31, T1S, R97W, 6th P.M.**



**Tri-State  
 Land Surveying Inc.**  
 (435) 781-2501  
 180 North Vernal Ave. Vernal, Utah 84078

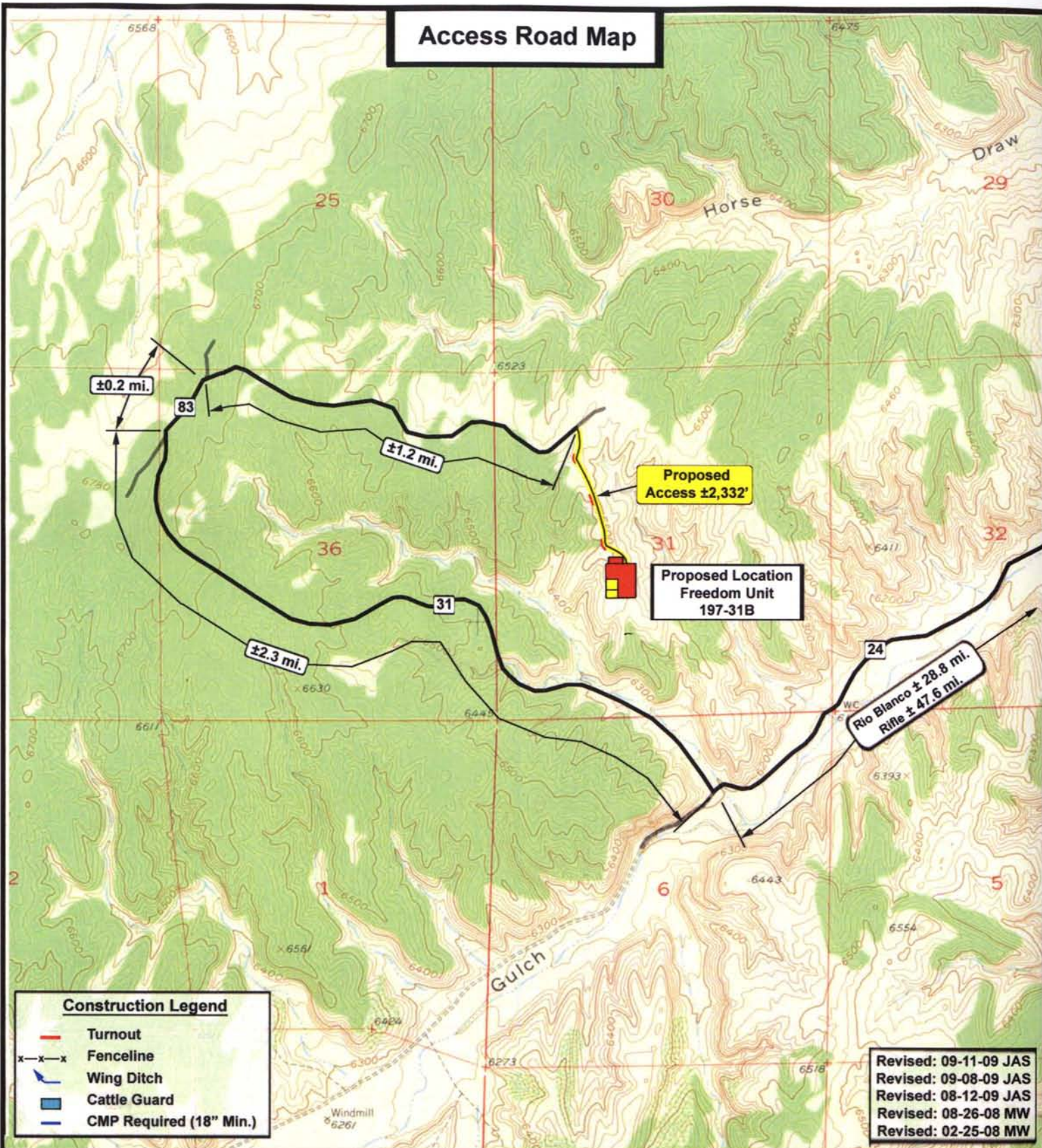
SCALE: 1 : 100,000  
 DRAWN BY: mw  
 DATE: 11-12-2007

**Legend**  
 Existing Road  
 Proposed Access

TOPOGRAPHIC MAP  
**"A"**  
 SHEET  
**6**  
 OF 9



# Access Road Map



**Exxon Mobil Corporation**

**Freedom Unit 197-31B  
 SEC. 31, T1S, R97W, 6th P.M.**



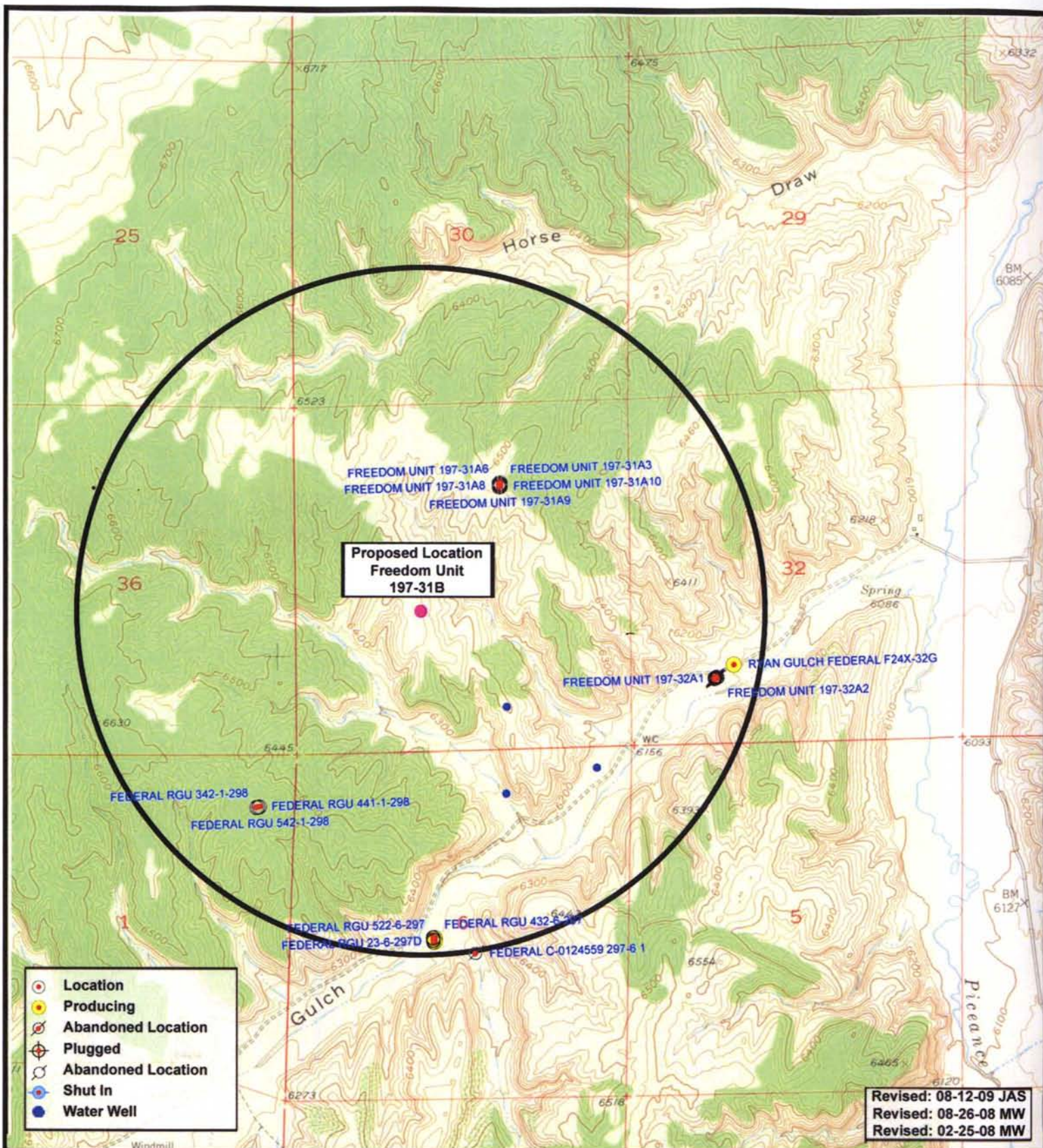
**Tri-State  
 Land Surveying Inc.**  
 (435) 781-2501  
 180 North Vernal Ave. Vernal, Utah 84078

**SCALE: 1" = 2,000'**  
**DRAWN BY: mw**  
**DATE: 11-12-2007**

**Legend**  
 Existing Road  
 Proposed Access

**TOPOGRAPHIC MAP**  
**"B"**  
**SHEET 7 OF 9**





**Exxon Mobil Corporation**

**Freedom Unit 197-31B  
 SEC. 31, T1S, R97W, 6th P.M.**

**Tri-State  
 Land Surveying Inc.**  
 (435) 781-2501  
 180 North Vernal Ave. Vernal, Utah 84078

**SCALE: 1" = 2,000'**  
**DRAWN BY: mw**  
**DATE: 11-12-2007**

**Legend**

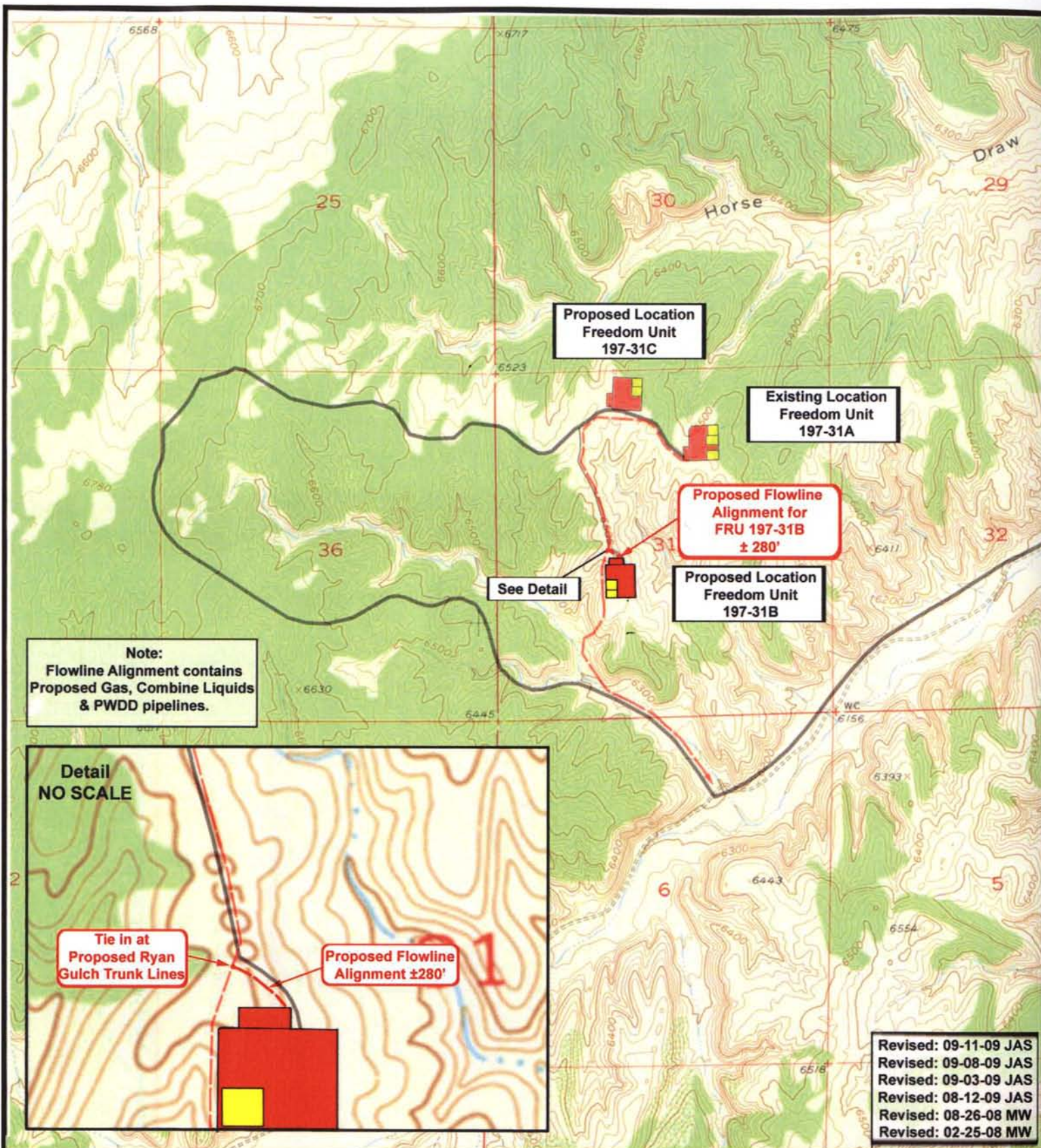
● Location  
 ○ One-Mile Radius

**TOPOGRAPHIC MAP**

**"C"**

**SHEET  
 8  
 OF 9**





**Exxon Mobil Corporation**

**Freedom Unit 197-31B  
SEC. 31, T1S, R97W, 6th P.M.**



**Tri-State  
Land Surveying Inc.**  
(435) 781-2501  
180 North Vernal Ave. Vernal, Utah 84078

SCALE: 1" = 2,000'

DRAWN BY: mw

DATE: 11-12-2007

**Legend**

— Roads  
- - - Proposed Flowline  
Alignment

TOPOGRAPHIC MAP

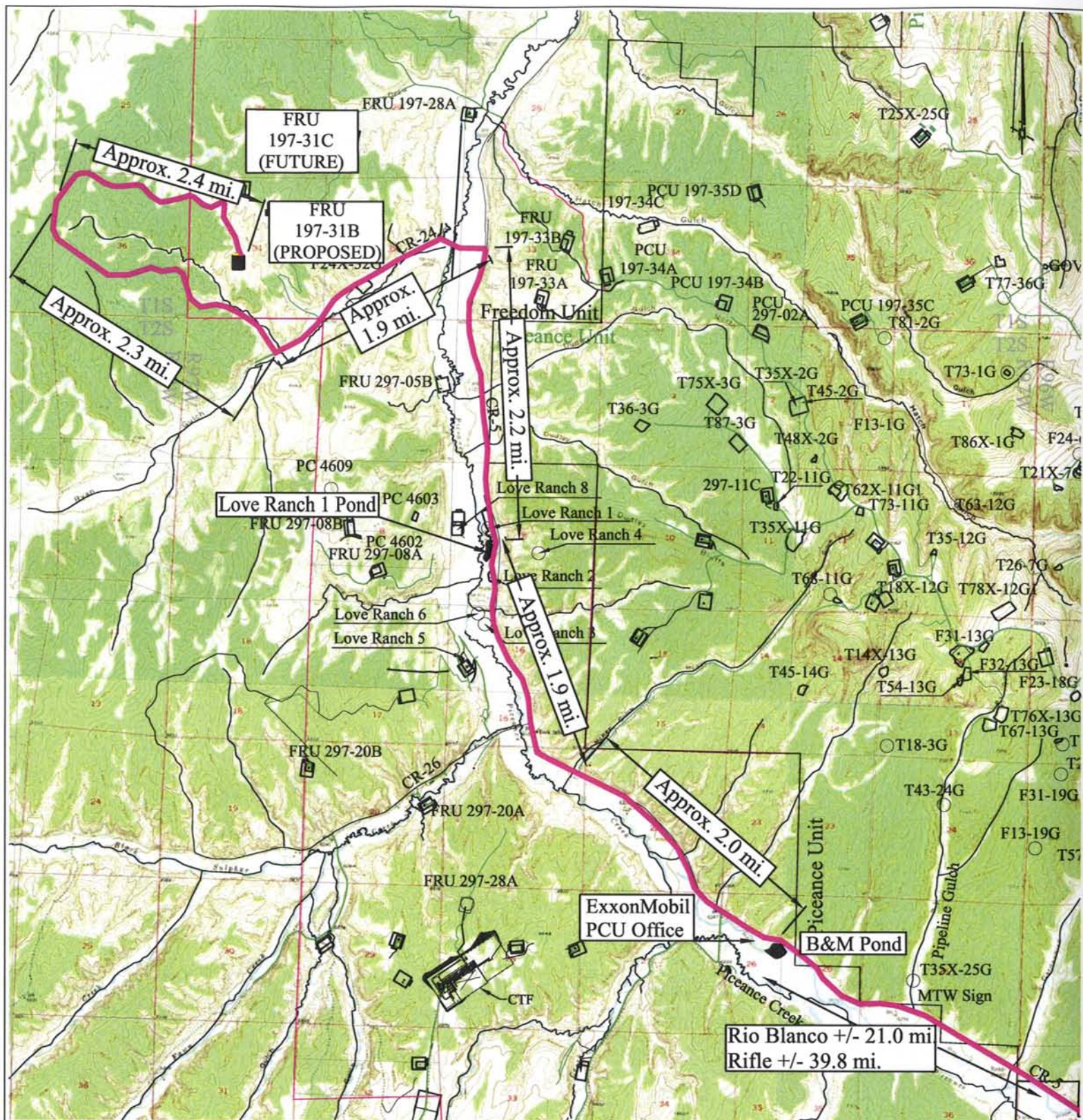
"D"

SHEET

9

OF 9





#### NOTES:

1. Reference USGS quadrangles titled Square S Ranch, Greasewood Gulch, Rock School, and Jessup Gulch.
2. Contour Interval is 20' for all background maps.
3. Coordinates are NAD27, US State plane, CO north zone 0501.
4. Streams shown thus:
5. Existing Roads shown thus:
6. Proposed Water Haul Route shown thus:

### Water Haul Routes - FRU 197-31B Section 31, T1S, R97W, 6th P.M. Piceance Development Project

2500 1250 0 1250 2500 5000 7500 10,000 12,500 feet

Scale= 1" : 5000'

EXXONMOBIL

Drawn by: CEL

Checked by: CEL

Date: Aug 19, 2009

Scale: 1":5000'

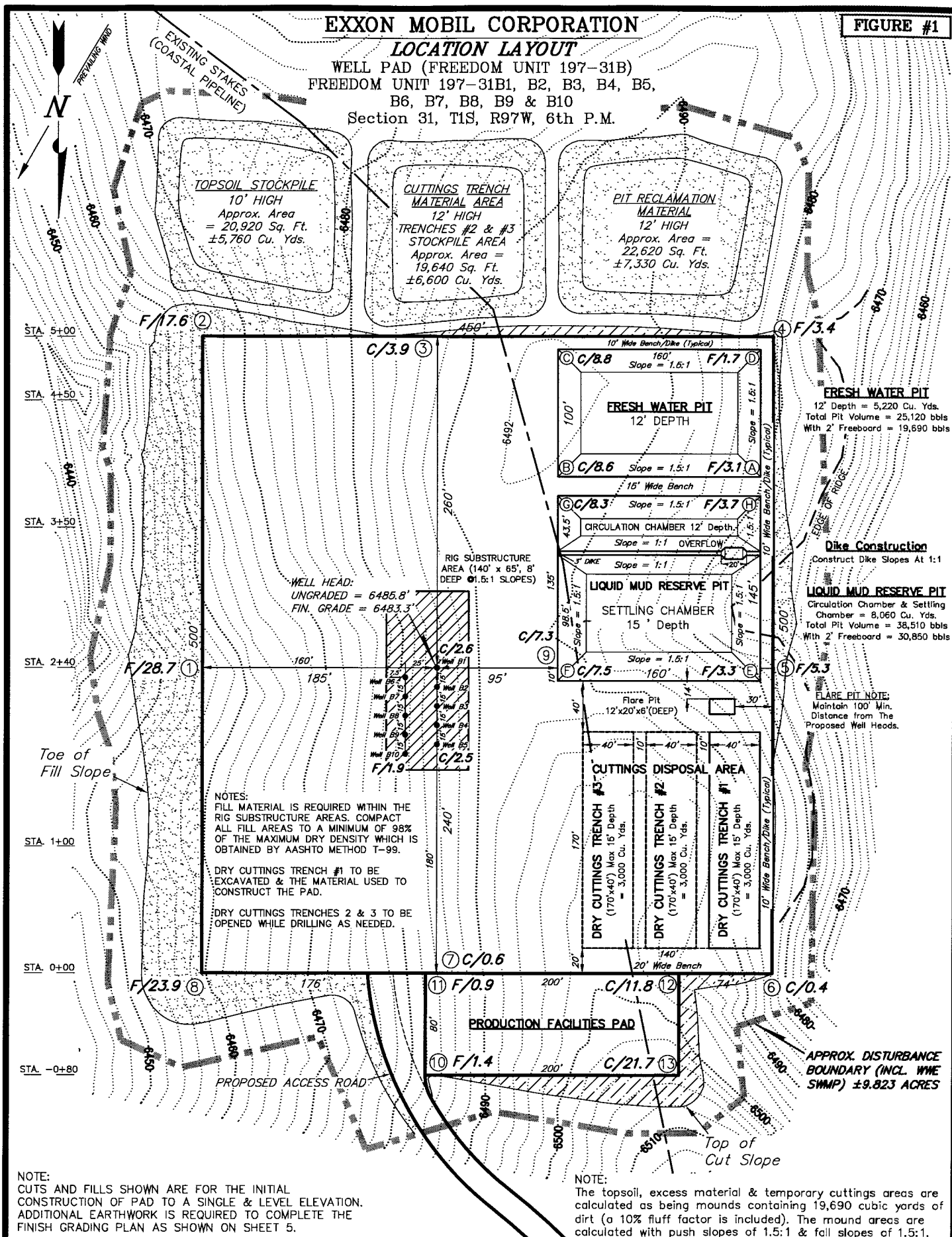
Dwg No. WP197-31B-09-001

| P    | 18 Aug 09 | Preliminary          | ---  | CEL   | CEL     | WFD      |
|------|-----------|----------------------|------|-------|---------|----------|
| REV. | DATE      | REVISION DESCRIPTION | ENG. | DRAWN | CHECKED | APPROVED |



**FIGURE #1**

WELL PAD (FREEDOM UNIT 197-31B)  
FREEDOM UNIT 197-31B1, B2, B3, B4, B5,  
B6, B7, B8, B9 & B10  
Section 31, T1S, R97W, 6th P.M.



NOTE:  
CUTS AND FILLS SHOWN ARE FOR THE INITIAL  
CONSTRUCTION OF PAD TO A SINGLE & LEVEL ELEVATION.  
ADDITIONAL EARTHWORK IS REQUIRED TO COMPLETE THE  
FINISH GRADING PLAN AS SHOWN ON SHEET 5.

NOTE:  
The topsoil, excess material & temporary cuttings areas are calculated as being mounds containing 19,690 cubic yards of dirt (a 10% fluff factor is included). The mound areas are calculated with push slopes of 1.5:1 & fall slopes of 1.5:1.

|                   |                         |
|-------------------|-------------------------|
| SURVEYED BY: D.P. | DATE SURVEYED: 01-17-06 |
| DRAWN BY: D.COX   | DATE DRAWN: 07-31-09    |
| SCALE: 1" = 100'  | REVISED: 08-07-09       |

**Tri State**  
**Land Surveying, Inc.**

180 NORTH VERNAL AVE. VERNAL, UTAH 84078

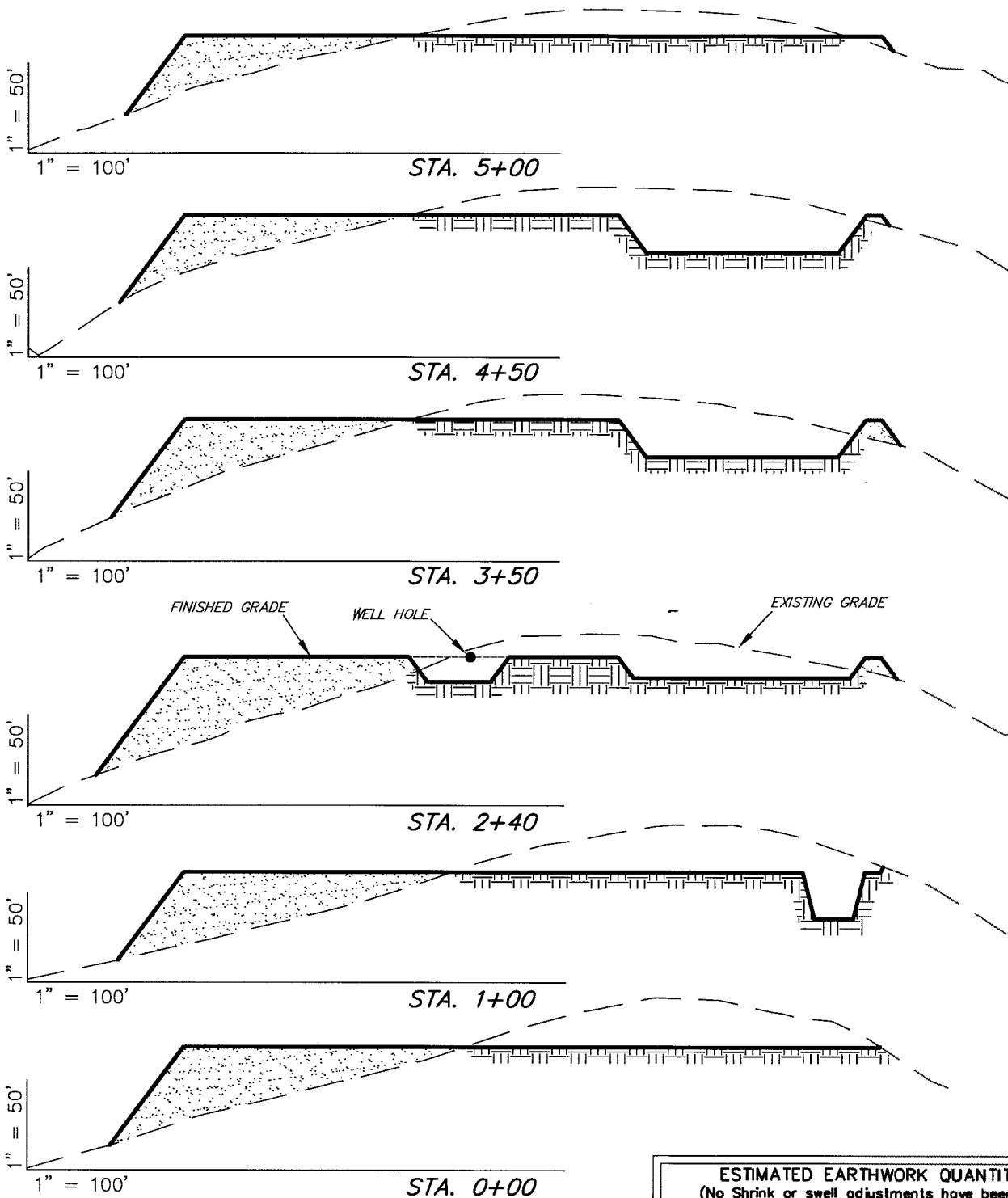
SHEET  
2  
OF 9

# EXXON MOBIL CORPORATION

FIGURE #2

## CROSS SECTIONS

WELL PAD (FREEDOM UNIT 197-31B)  
FREEDOM UNIT 197-31B1, B2, B3, B4, B5, B6, B7, B8, B9 & B10  
Section 31, T1S, R97W, 6th P.M.



### NOTES:

- 1.) UNLESS OTHERWISE NOTED, CUT SLOPES ARE AT 1:1 & FILL SLOPES ARE AT 1.5:1.
- 2.) RIG SUBSTRUCTURE, LIQUID MUD RESERVE PIT, FRESH WATER PIT & DRY CUTTINGS TRENCH #1 TO BE EXCAVATED AND USED TO CONSTRUCT THE LOCATION.
- 3.) RIG SUBSTRUCTURE MATERIAL TO BE REPLACED WITH ENGINEERED MATERIAL TO ALLOW FOR 98% COMPACTION.

### ESTIMATED EARTHWORK QUANTITIES (No Shrink or swell adjustments have been used) (Expressed in Cubic Yards)

| ITEM         | CUT    | FILL   | 6" TOPSOIL                         | EXCESS  |
|--------------|--------|--------|------------------------------------|---------|
| SUBSTRUCTURE | 2,020  | 0      | Topsoil is not included in Pad Cut | 2,020   |
| PITS         | 13,280 | 0      |                                    | 13,280  |
| PAD          | 42,560 | 51,200 | 5,240                              | - 8,640 |
| TOTALS       | 57,860 | 51,200 | 5,240                              | 6,660   |

SURVEYED BY: D.P. DATE SURVEYED: 01-17-06  
DRAWN BY: D.COX DATE DRAWN: 07-31-09  
SCALE: 1" = 100' REVISED:

**Tri State**  
Land Surveying, Inc.  
180 NORTH VERNAL AVE. VERNAL, UTAH 84078  
(435) 781-2501

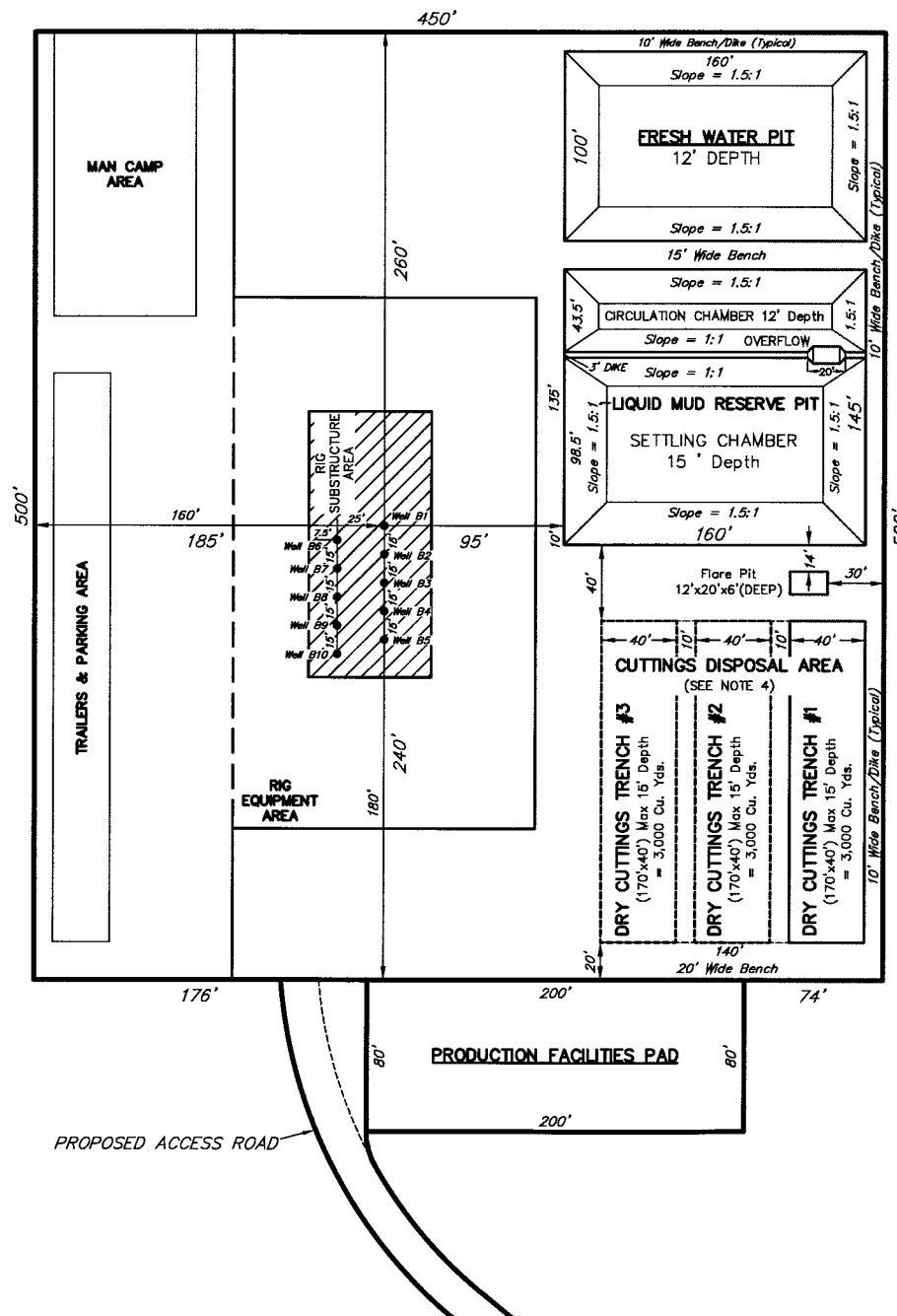
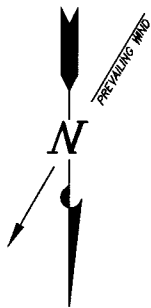
SHEET  
3  
OF 9

# EXXON MOBIL CORPORATION

FIGURE #3

## TYPICAL RIG LAYOUT

WELL PAD (FREEDOM UNIT 197-31B)  
FREEDOM UNIT 197-31B1, B2, B3, B4, B5,  
B6, B7, B8, B9 & B10  
Section 31, T1S, R97W, 6th P.M.



### FRESH WATER PIT

12' Depth = 5,220 Cu. Yds.  
Total Pit Volume = 25,120 bbls  
With 2' Freeboard = 19,690 bbls

### Dike Construction

Construct Dike Slopes At 1:1

### LIQUID MUD RESERVE PIT

Circulation Chamber & Settling  
Chamber = 8,060 Cu. Yds.  
Total Pit Volume = 38,510 bbls  
With 2' Freeboard = 30,850 bbls

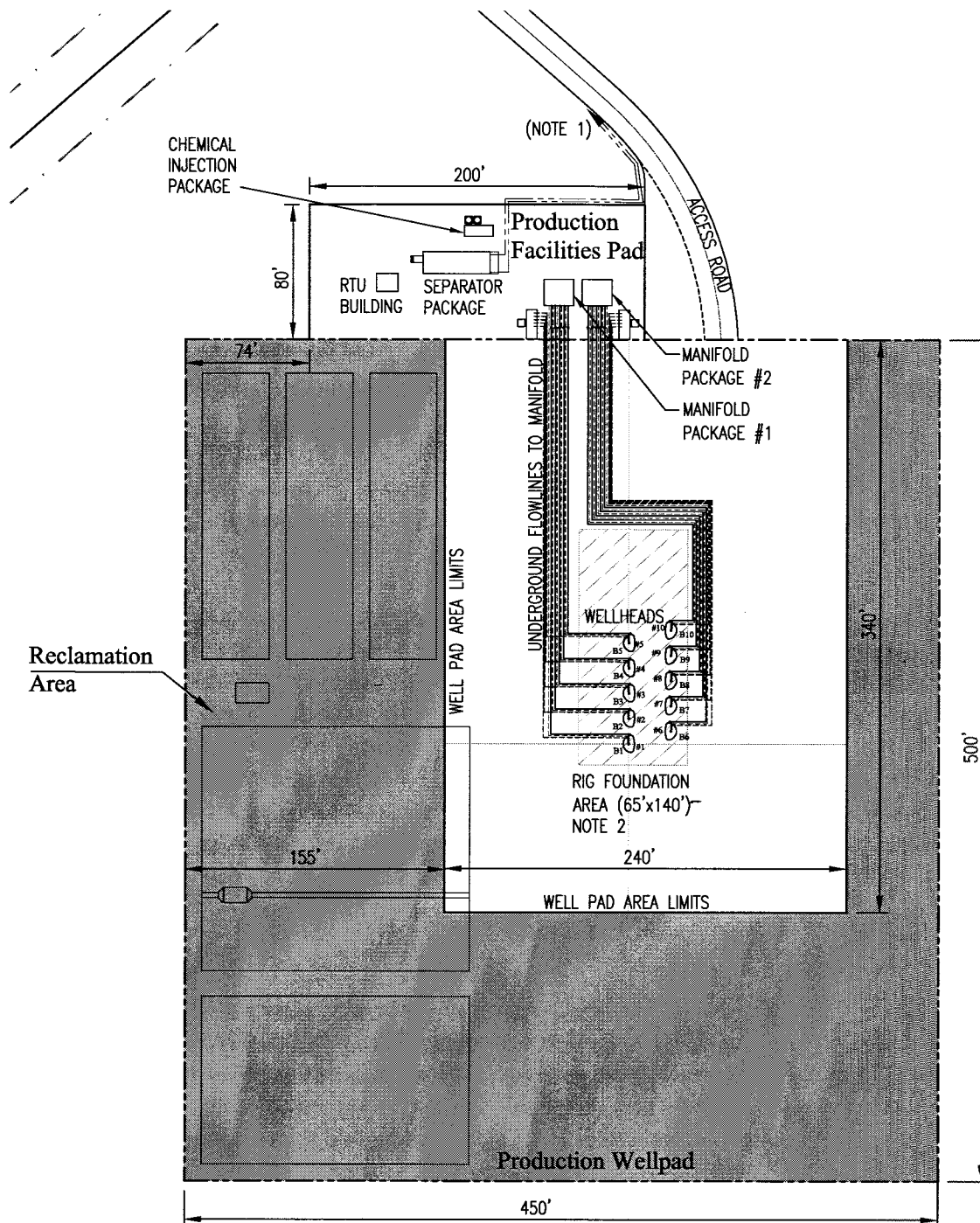
**FLARE PIT NOTE:**  
Maintain 100' Min.  
Distance from The  
Proposed Well Heads.

|                   |                         |
|-------------------|-------------------------|
| SURVEYED BY: D.P. | DATE SURVEYED: 01-17-06 |
| DRAWN BY: D.COX   | DATE DRAWN: 07-31-09    |
| SCALE: 1" = 100'  | REVISED:                |

**Tri State**  
Land Surveying, Inc.  
(435) 781-2501  
180 NORTH VERNAL AVE. VERNAL, UTAH 84078

SHEET  
4  
OF 9

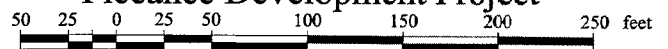
SHEET  
5  
OF 9



## NOTES:

1. Gas and Produced Water Flowline to Tie-in to associated trunklines.  
Reference PCU 197-31B- Topo 'D'.
2. Multiple flowline trenches to be installed outside of the indicated Rig Foundation Area.

## Production Facilities Plot Plan PCU 197-31B Piceance Development Project



Scale = 1" : 100'

EXXONMOBIL

Drawn by: CEL

Checked by: CEL

Date: Jan. 04, 2009

Scale: 1"=100'

Dwg No. WP197-31B-09-002

| REV. | DATE      | REVISION DESCRIPTION | DRAWN | CHECKED | APPROVED |
|------|-----------|----------------------|-------|---------|----------|
| P1   | 31 Aug 09 | General Revision     | CEL   | CEL     | WFD      |
| P    | 04 Jan 09 | Preliminary          | CEL   | CEL     | WFD      |



## Center Stake

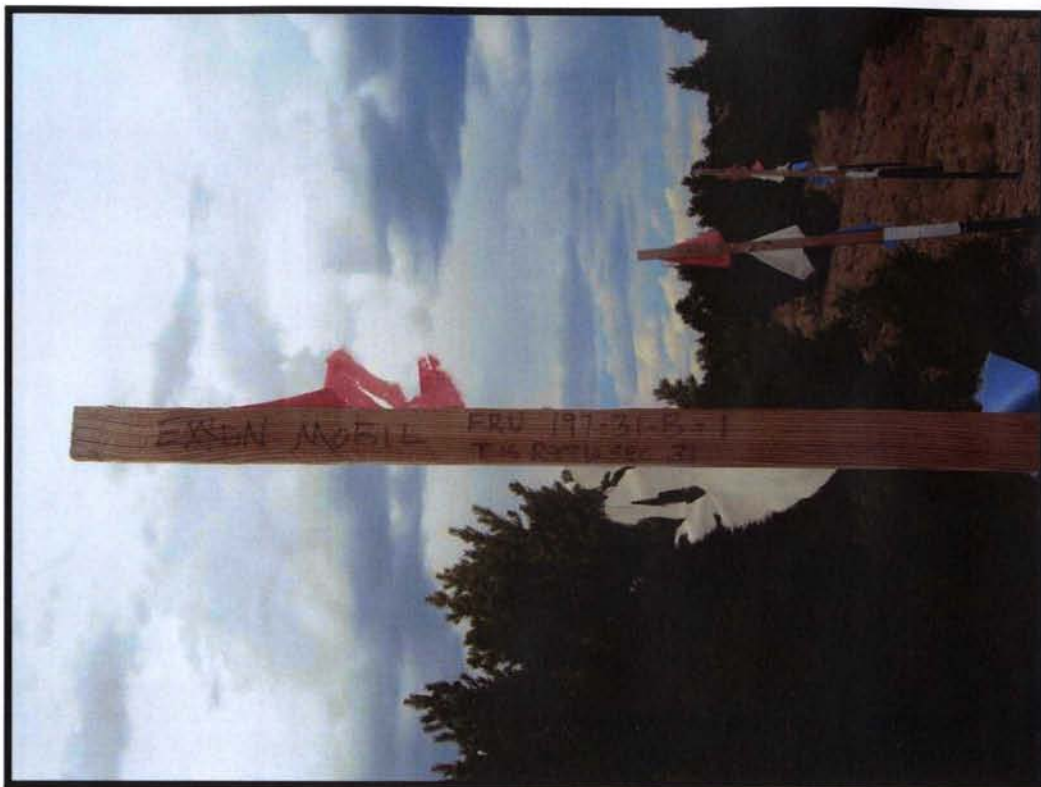
Date Photographed: 08/18/2009

Photographed By: D. Gardiner

NAD 83 - Decimal Degrees

Latitude : 39.918350

Longitude : 108.326098



## Access

Date Photographed: 08/18/2009

Photographed By: D. Gardiner

NAD 83 - Decimal Degrees

Latitude : 39.924513

Longitude : 108.328664



**Exxon Mobil Corporation**

**Freedom Unit 197-31B  
SEC. 31, T1S, R97W, 6th P.M.**

*Tri-State  
Land Surveying Inc.*  
(435) 781-2501  
180 North Vernal Ave. Vernal, Utah 84078

DRAWN BY: 08/19/2009

DATE: JAS

Location

**Rio Blanco County,  
Colorado**

COLOR  
PHOTOGRAPHS

SHEET  
**P1**  
OF 3



## Northerly

Date Photographed: 08/18/2009

Photographed By: D. Gardiner

NAD 83 - Decimal Degrees

Latitude : 39.918274

Longitude : 108.326061



## Easterly

Date Photographed: 08/18/2009

Photographed By: D. Gardiner

NAD 83 - Decimal Degrees

Latitude : 39.918449

Longitude : 108.326212



**Exxon Mobil Corporation**

**Freedom Unit 197-31B  
SEC. 31, T1S, R97W, 6th P.M.**

*Tri-State  
Land Surveying Inc.*  
(435) 781-2501  
180 North Vernal Ave. Vernal, Utah 84078

DRAWN BY: 08/19/2009

DATE: JAS

Location

**Rio Blanco County,  
Colorado**

COLOR  
PHOTOGRAPHS

SHEET  
**P2**  
OF 3



## Southerly

Date Photographed: 08/18/2009

Photographed By: D. Gardiner

NAD 83 - Decimal Degrees

Latitude : 39.918619

Longitude : 108.326100



## Westerly

Date Photographed: 08/18/2009

Photographed By: D. Gardiner

NAD 83 - Decimal Degrees

Latitude : 39.918474

Longitude : 108.325924



**Exxon Mobil Corporation**

**Freedom Unit 197-31B  
SEC. 31, T1S, R97W, 6th P.M.**

*Tri-State  
Land Surveying Inc.*  
(435) 781-2501  
180 North Vernal Ave. Vernal, Utah 84078

DRAWN BY: 08/19/2009

DATE: JAS

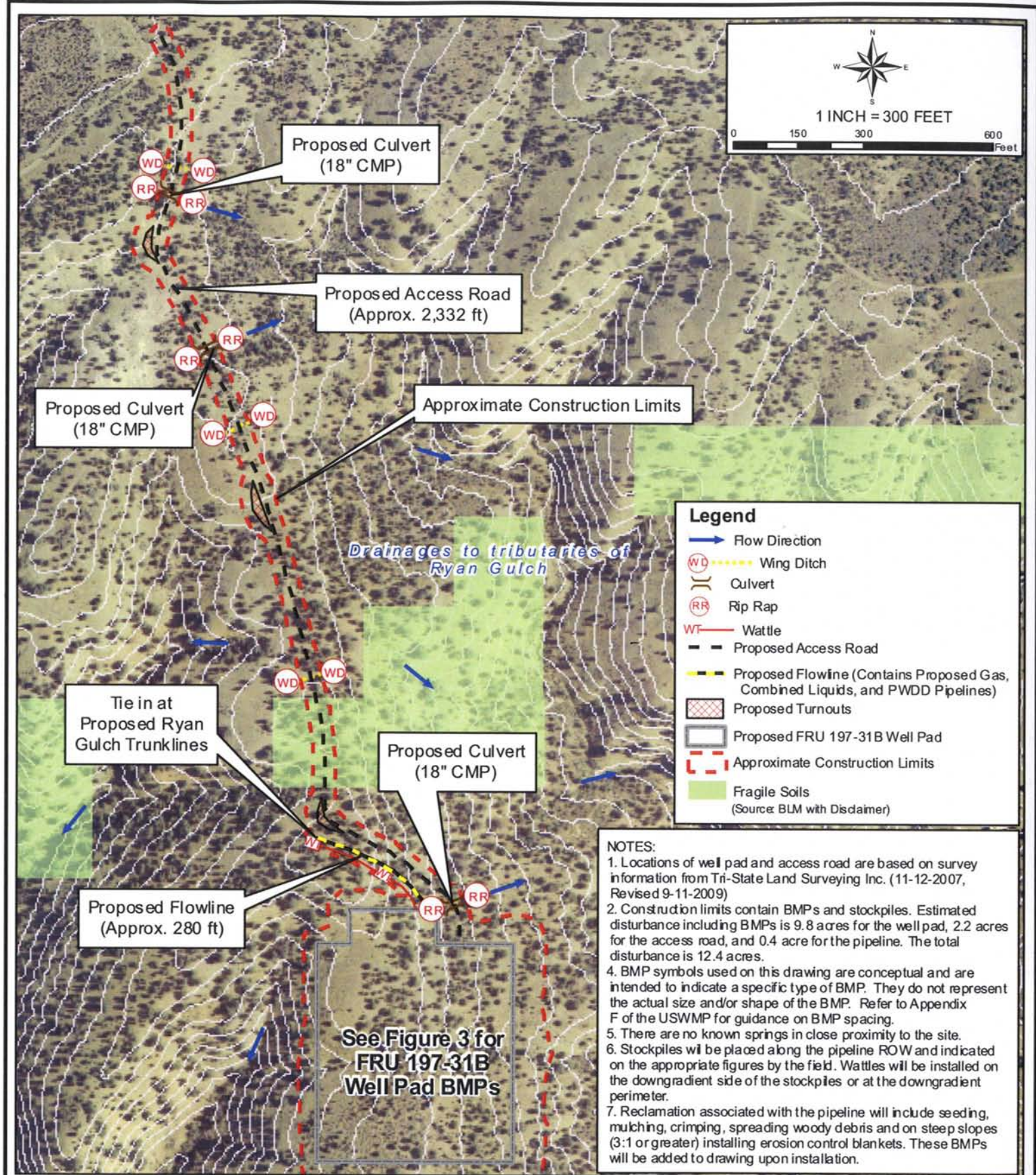
Location

**Rio Blanco County,  
Colorado**

COLOR  
PHOTOGRAPHS

SHEET  
**P3**  
OF 3





05/08/08 GIS: Z:\Project Files\72-99\801-111\801-111.412\CAD-GIS\GIS\Task 023\Revised 9-2-09\Figure\_2.0.mxd

Base Map: LIDAR 2007

**WWE**  
**WRIGHT WATER ENGINEERS, INC.**  
 2490 W 26TH AVE 100A  
 DENVER, CO. 80211  
 (303) 480-1700

**RIO BLANCO COUNTY, COLORADO**  
**EXXON MOBIL CORPORATION**  
**FREEDOM UNIT 197-31B**  
**APPROXIMATE CONSTRUCTION AND**  
**SOIL DISTURBANCE LIMITS MAP**  
 SECTION 31, TOWNSHIP 1S, RANGE 97W, 6TH P.M.

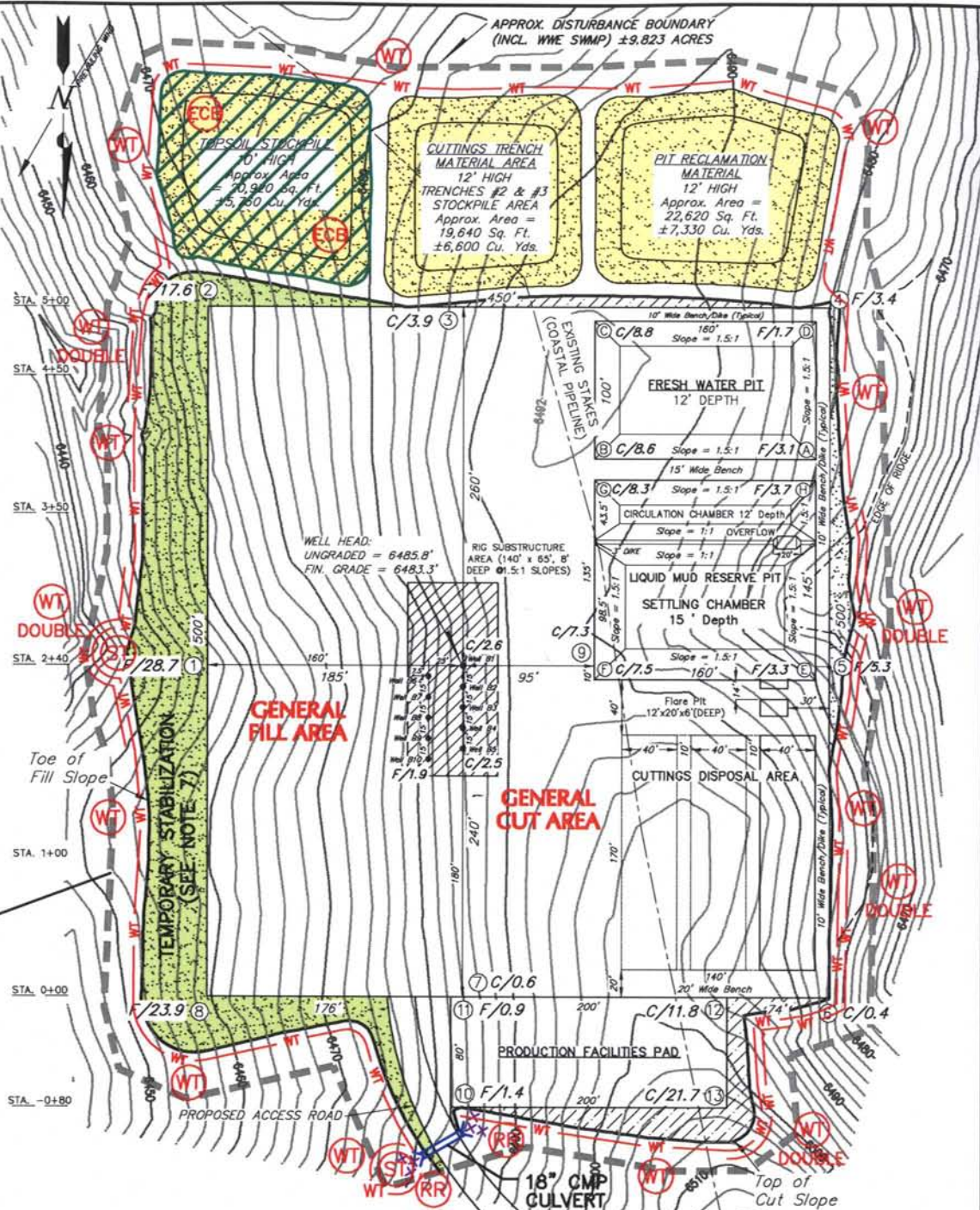
**PROJECT NO.**  
 801-111.412  
**TASK 23**  
**REVISION:**  
 1 KDW 9/11/09

**FIGURE**  
**2**



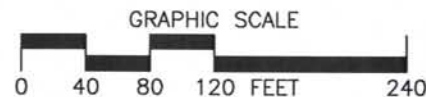
# LEGEND

- RIP RAP
- SEDIMENT TRAP
- WATTLE
- STOCKPILE MANAGEMENT
- TEMPORARY STABILIZATION (SEE NOTE 7)
- EROSION CONTROL BLANKET AND TEMPORARY SEEDING
- CULVERT
- FLOW DIRECTION
- APPROXIMATE CONSTRUCTION LIMITS FOR THE WELL PAD



## NOTES

1. LOCATIONS OF WELL PAD FEATURES ARE BASED ON SURVEY INFORMATION FROM TRI STATE SURVEYING, INC. (08/07/09).
2. CUT MATERIAL IS RE-USED AS FILL MATERIAL OR WASTED ON SITE.
3. BMP SYMBOLS USED ON DRAWING ARE CONCEPTUAL AND ARE INTENDED TO INDICATE A SPECIFIC TYPE OF BMP. THEY DO NOT REPRESENT THE ACTUAL SIZE AND OR SHAPE OF THE BMP. REFER TO APPENDIX F OF THE USWP FOR GUIDANCE ON BMP SPACING.
4. CONTOURS REPRESENT PRE-CONSTRUCTION ELEVATIONS.
5. WELL PAD WILL BE CONSTRUCTED TO BE RELATIVELY FLAT WITH SIDE SLOPES. SIDE SLOPES ARE INDICATED BY FILL AND CUT ELEVATIONS.
6. THERE ARE NO KNOWN WETLANDS, SPRINGS OR OTHER SURFACE WATERS IN CLOSE PROXIMITY TO THIS SITE.
7. REQUIREMENTS FOR TEMPORARY STABILIZATION WILL BE DETERMINED IN THE FIELD, IT WILL BE BASED PRIMARILY ON ROCK CONTENT AND SLOPE.
8. PERIMETER BMPs WILL BE PLACED AS CLOSE TO THE TOE OF THE SLOPE AS FEASIBLE WHILE MAINTAINING ADEQUATE ROOM FOR OPERATION OF CONSTRUCTION EQUIPMENT BETWEEN THE TOE OF SLOPE AND THE LIMITS OF DISTURBANCE.



Plot Date/Time: 09/23/2009, 04:33:37 PM; Z:\PROJECT FILES\72-99\801-111\801-111.412\CAD-GIS\CAD\TASK 023\FIGURE 3-FRU 197-31B (08-07-09).DWG-FIGURE 3



WRIGHT WATER ENGINEERS, INC.  
2490 W. 26TH AVE. SUITE 100A  
DENVER, CO 80211  
(303)480-1700 FAX(303)480-1020

EXXON MOBIL CORPORATION  
SECTION 31, TOWNSHIP 1S, RANGE 97W  
**FRU 197-31B**

**PROPOSED BMPs ISWMP DRAWING**

REVISION:

1 KAL 09/23/09

REVISED  
FIGURE

3

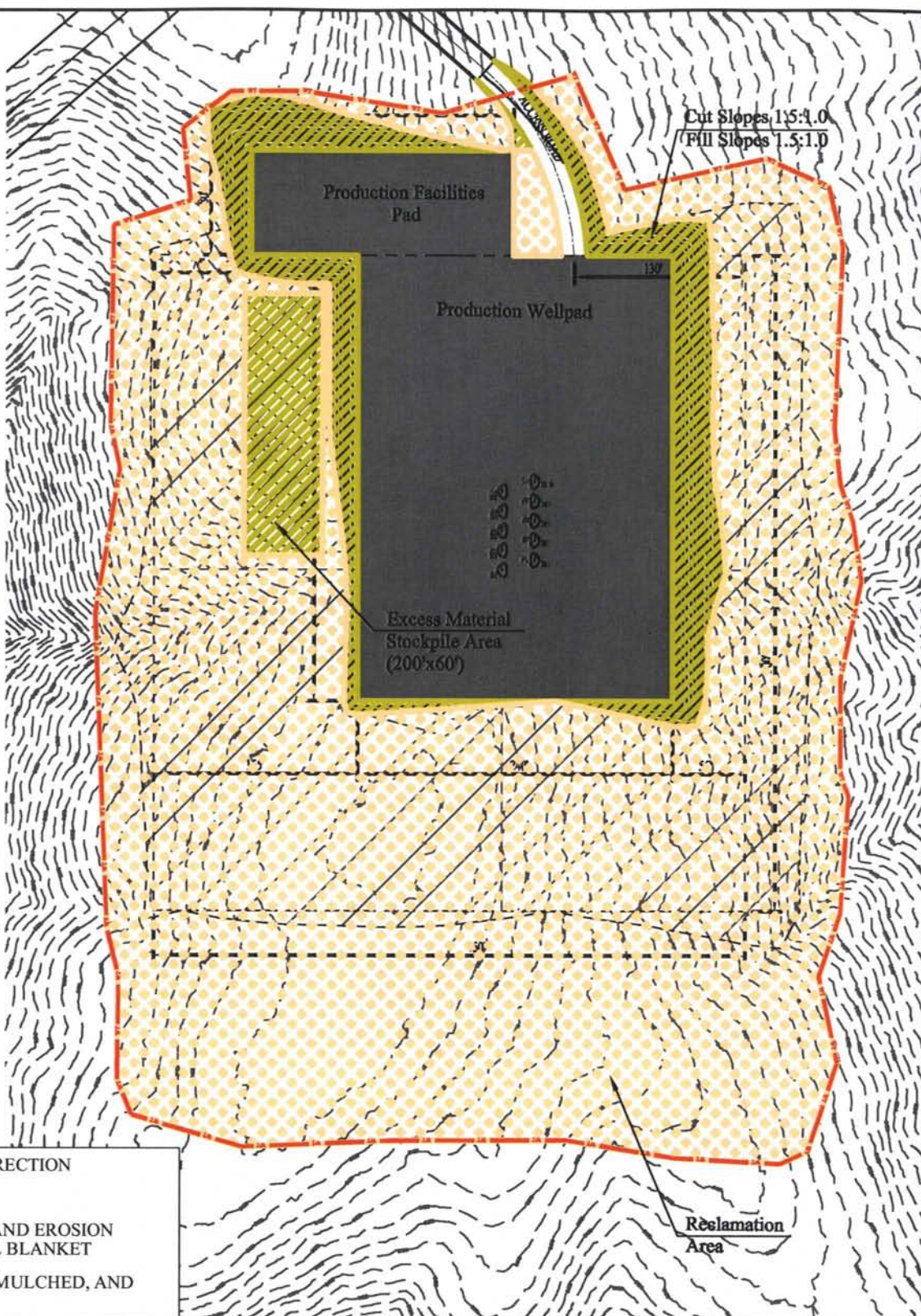


### Estimated 'Disturbed' Area

Original Wellpad Facilities  
Area:  
9.8 Acres

Interim Production Wellpad  
and Facilities Area:  
3.1 Acres

Reclaimed Area (Interim):  
6.7 Acres



### NOTES:

1. Reference Tri State Land Surveying Inc. grading plan dated 08-07-09.
2. Reclaimed area to be regraded to achieve approximate original contours. Original contours are shown for reference.
3. Perimeter BMPs (e.g. wattles) will remain in place as needed until final stabilization is achieved.
4. If field conditions dictate Hydromulch will be used. If Hydromulch used, seed will be applied first (at double the seed rate) then the Hydromulch will be applied.

SOURCE: EXXONMOBIL

FRU 197-31B - Interim Reclamation Plan

Date: Jan. 05, 2009

Dwg No. WP197-31B-09-003

60 30 0 30 60 120 180 240 300 feet

Scale= 1" : 120'

Plot Date/Time: 09/24/2009, 12:10:51 PM; Z:\PROJECT FILES\72-99\801-111\801-111.412\CAD-GIS\CAD\TASK 023\FIGURE 5-FRU 197-31B-WP197-31B-09-003.DWG-FIGURE 5



WRIGHT WATER ENGINEERS, INC.  
2490 W. 26TH AVE. SUITE 100A  
DENVER, CO 80211  
(303)480-1700 FAX(303)480-1020

EXXON MOBIL CORPORATION  
SECTION 31, TOWNSHIP 15S, RANGE 97W  
**FRU 197-31B**  
**INTERIM RECLAMATION PLAN**

REVISION:

1 KAL 09/23/09

REVISED  
FIGURE

5