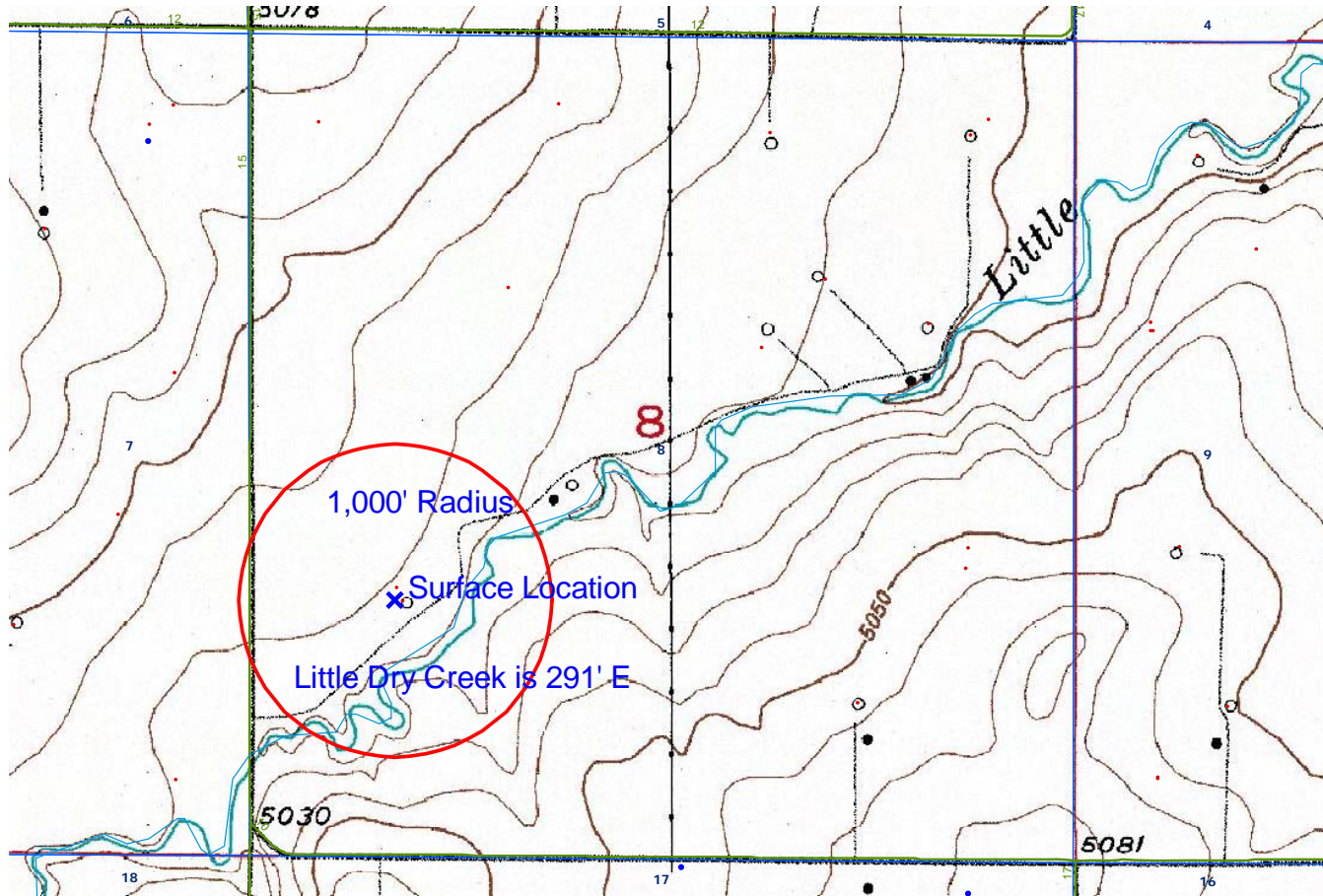


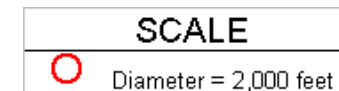
NRC 11-8

TOPO

HYDROLOGY MAP-A



TOWNSHIP 1 NORTH, RANGE 67 WEST



### LEGEND A

#### WATER RESOURCES

- Water Wells
- Lakes
- Major Rivers
- Streams
- 300-Foot Stream Buffers

### LEGEND B

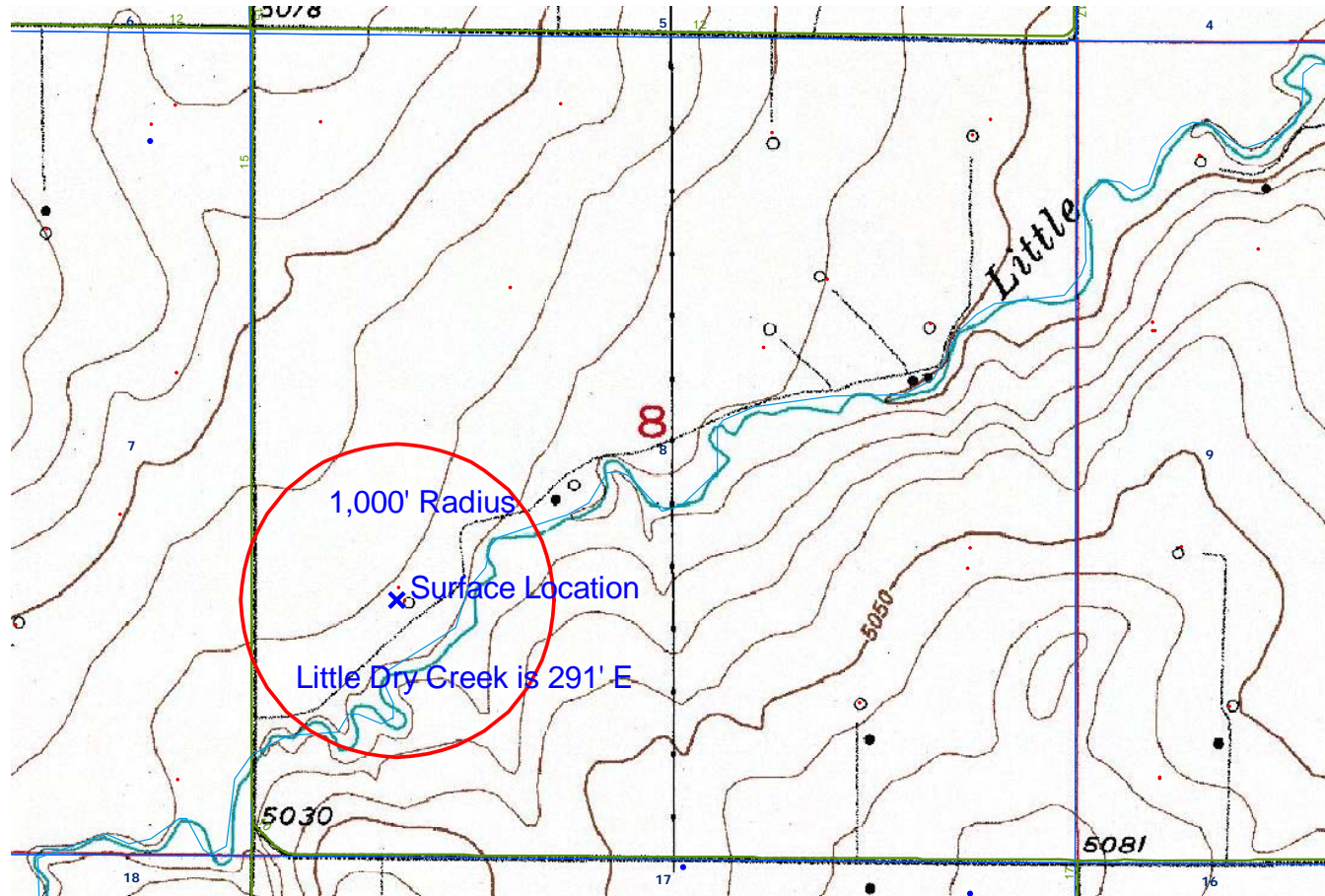
#### 1200-SEARIES WILDLIFE AREAS

- RSO Areas
- RSO\_Osprey\_Curren
- SWH Areas
- State Wildlife Areas

NRC 11-8

TOPO

HYDROLOGY MAP-B



TOWNSHIP 1 NORTH, RANGE 67 WEST

SCALE

Diameter = 2,000 feet

### LEGEND A

#### WATER RESOURCES

- Water Wells
- Lakes
- Major Rivers
- Streams
- 300-Foot Stream Buffers

### LEGEND B

#### 1200-SEARIES WILDLIFE AREAS

- RSO Areas
- RSO\_Osprey\_Curren
- SWH Areas
- State Wildlife Areas





TOWNSHIP 1 NORTH, RANGE 67 WEST

SCALE



Diameter = 2,000 feet

## LEGEND A

## WATER RESOURCES

- Water Wells
- Lakes
- Major Rivers
- Streams
- 300-Foot Stream Buffers

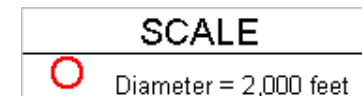
## LEGEND B

## 1200-SEARIES WILDLIFE AREAS

- RSO Areas
- RSO\_Osprey\_Curren
- SWH Areas
- State Wildlife Areas



TOWNSHIP 1 NORTH, RANGE 67 WEST

**LEGEND A****WATER RESOURCES**

- Water Wells
- Lakes
- Major Rivers
- Streams
- 300-Foot Stream Buffers

**LEGEND B****1200-SEARIES WILDLIFE AREAS**

- RSO Areas
- RSO\_Osprey\_Curren
- SWH Areas
- State Wildlife Areas