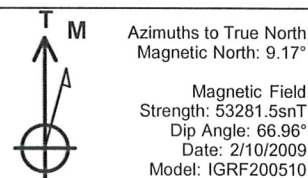
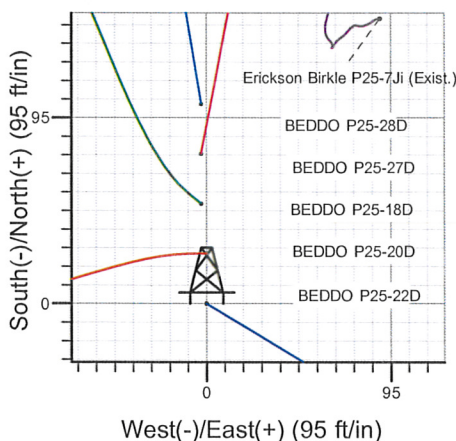
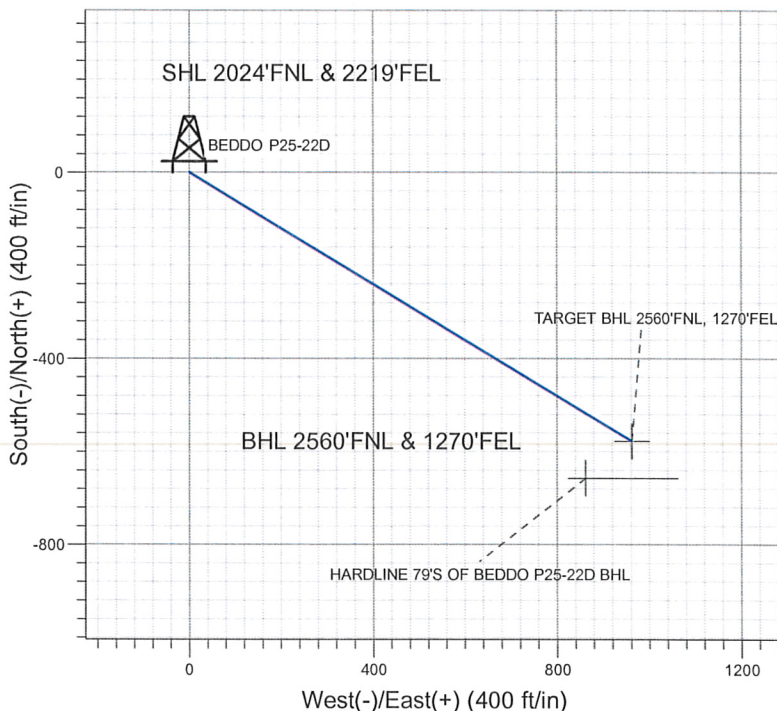
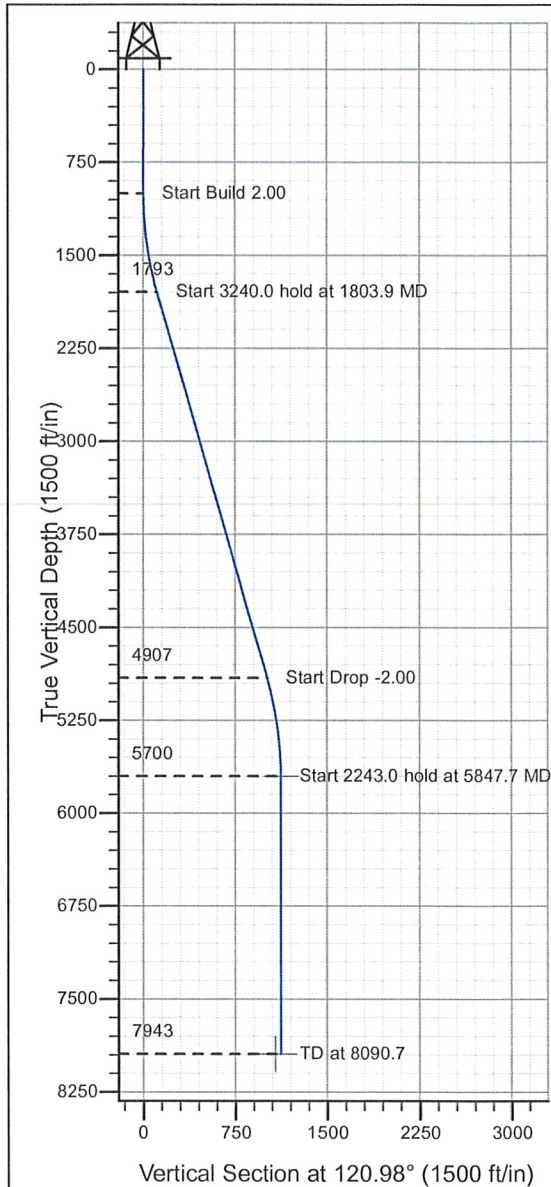


### Well Name: BEDDO P25-22D

Surface Location: BEDDO P25-22D Pad Sec.25-T3N-R67W  
 North American Datum 1983 , US State Plane 1983 , Colorado Northern Zone  
 Ground Elevation: 4805.0  
 +N/-S+E/-W Northing Easting Latitude Longitude Slot  
 0.0 0.0 1315485.74 3184934.00 40° 11' 51.036 N 104° 50' 16.656 W  
 Original Well Elev WELL @ 4818.0ft (Original Well Elev)

### NOBLE ENERGY INC WELD COUNTY CO



#### WELLBORE TARGET DETAILS (LAT/LONG)

Name	TVD	+N/-S	+E/-W	Latitude	Longitude	Shape
TARGET BHL 2560'FNL, 1270'FEL	5700.0	-577.2	961.4	40° 11' 45.332 N	104° 50' 4.267 W	Point
HARDLINE 79'S OF BEDDO P25-22D BHL	7943.0	-656.2	861.4	40° 11' 44.551 N	104° 50' 5.556 W	Polygon

#### SECTION DETAILS

Sec	MD	Inc	Azi	TVD	+N/-S	+E/-W	DLeg	TFace	VSec	Target
1	0.0	0.00	0.00	0.0	0.0	0.0	0.00	0.00	0.0	
2	1000.0	0.00	0.00	1000.0	0.0	0.0	0.00	0.00	0.0	
3	1803.9	16.08	120.98	1793.4	-57.7	96.1	2.00	120.98	112.0	
4	5043.9	16.08	120.98	4906.6	-519.5	865.3	0.00	0.00	1009.3	
5	5847.7	0.00	0.00	5700.0	-577.2	961.4	2.00	180.00	1121.3	TARGET BHL 2560'FNL, 1270'FEL
6	8090.7	0.00	0.00	7943.0	-577.2	961.4	0.00	0.00	1121.3	



## **Directional**

### **NOBLE ENERGY INC WELD COUNTY CO**

**SEC.25-T3N-R67W**

**BEDDO P25-22D Pad Sec.25-T3N-R67W**

**BEDDO P25-22D**

**BEDDO P25-22D**

**Plan: Noble BEDDO P25-22D Plan #2 (9-30-09)**

### **Standard Planning Report**

**30 September, 2009**





Database:	EDM den0-adp01 Server Data	Local Co-ordinate Reference:	Well BEDDO P25-22D
Company:	NOBLE ENERGY INC WELD COUNTY CO	TVD Reference:	WELL @ 4818.0ft (Original Well Elev)
Project:	SEC.25-T3N-R67W	MD Reference:	WELL @ 4818.0ft (Original Well Elev)
Site:	BEDDO P25-22D Pad Sec.25-T3N-R67W	North Reference:	True
Well:	BEDDO P25-22D	Survey Calculation Method:	Minimum Curvature
Wellbore:	BEDDO P25-22D		
Design:	Noble BEDDO P25-22D Plan #2 (9-30-09)		

Project	SEC.25-T3N-R67W, Weld County, Colorado		
Map System:	US State Plane 1983	System Datum:	Mean Sea Level
Geo Datum:	North American Datum 1983		Using Well Reference Point
Map Zone:	Colorado Northern Zone		Using geodetic scale factor

Site		BEDDO P25-22D Pad Sec.25-T3N-R67W			
Site Position:		Northing:	1,315,639.93ft	Latitude:	40° 11' 52.548 N
From:	Lat/Long	Easting:	3,185,092.08ft	Longitude:	104° 50' 14.604 W
Position Uncertainty:	0.0 ft	Slot Radius:	"	Grid Convergence:	0.43 °

Well	BEDDO P25-22D					
Well Position	+N/-S	-153.0 ft	Northing:	1,315,485.74 ft	Latitude:	40° 11' 51.036 N
	+E/-W	-159.2 ft	Easting:	3,184,934.00 ft	Longitude:	104° 50' 16.656 W
Position Uncertainty		0.0 ft	Wellhead Elevation:	ft	Ground Level:	4,805.0 ft

Wellbore	BEDDO P25-22D				
Magnetics	Model Name	Sample Date	Declination (°)	Dip Angle (°)	Field Strength (nT)
	IGRF200510	2/10/2009	9.17	66.96	53,282

Design	Noble BEDDO P25-22D Plan #2 (9-30-09)			
Audit Notes:				
Version:	Phase:	PROTOTYPE	Tie On Depth:	0.0
Vertical Section:	Depth From (TVD) (ft)	+N/-S (ft)	+E/-W (ft)	Direction (°)
	0.0	0.0	0.0	120.98

Plan Sections										
Measured Depth (ft)	Inclination (°)	Azimuth (°)	Vertical Depth (ft)	+N/-S (ft)	+E/-W (ft)	Dogleg Rate (°/100ft)	Build Rate (°/100ft)	Turn Rate (°/100ft)	TFO (°)	Target
0.0	0.00	0.00	0.0	0.0	0.0	0.00	0.00	0.00	0.00	
1,000.0	0.00	0.00	1,000.0	0.0	0.0	0.00	0.00	0.00	0.00	
1,803.9	16.08	120.98	1,793.4	-57.7	96.1	2.00	2.00	0.00	120.98	
5,043.9	16.08	120.98	4,906.6	-519.5	865.3	0.00	0.00	0.00	0.00	
5,847.7	0.00	0.00	5,700.0	-577.2	961.4	2.00	-2.00	0.00	180.00	TARGET BHL 256C
8,090.7	0.00	0.00	7,943.0	-577.2	961.4	0.00	0.00	0.00	0.00	

Database:	EDM den0-adp01 Server Data	Local Co-ordinate Reference:	Well BEDDO P25-22D
Company:	NOBLE ENERGY INC WELD COUNTY CO	TVD Reference:	WELL @ 4818.0ft (Original Well Elev)
Project:	SEC.25-T3N-R67W	MD Reference:	WELL @ 4818.0ft (Original Well Elev)
Site:	BEDDO P25-22D Pad Sec.25-T3N-R67W	North Reference:	True
Well:	BEDDO P25-22D	Survey Calculation Method:	Minimum Curvature
Wellbore:	BEDDO P25-22D		
Design:	Noble BEDDO P25-22D Plan #2 (9-30-09)		

Planned Survey									
Measured Depth (ft)	Inclination (°)	Azimuth (°)	Vertical Depth (ft)	+N/-S (ft)	+E/-W (ft)	Vertical Section (ft)	Dogleg Rate (°/100ft)	Build Rate (°/100ft)	Turn Rate (°/100ft)
0.0	0.00	0.00	0.0	0.0	0.0	0.0	0.00	0.00	0.00
40.0	0.00	0.00	40.0	0.0	0.0	0.0	0.00	0.00	0.00
80.0	0.00	0.00	80.0	0.0	0.0	0.0	0.00	0.00	0.00
120.0	0.00	0.00	120.0	0.0	0.0	0.0	0.00	0.00	0.00
160.0	0.00	0.00	160.0	0.0	0.0	0.0	0.00	0.00	0.00
200.0	0.00	0.00	200.0	0.0	0.0	0.0	0.00	0.00	0.00
240.0	0.00	0.00	240.0	0.0	0.0	0.0	0.00	0.00	0.00
280.0	0.00	0.00	280.0	0.0	0.0	0.0	0.00	0.00	0.00
320.0	0.00	0.00	320.0	0.0	0.0	0.0	0.00	0.00	0.00
360.0	0.00	0.00	360.0	0.0	0.0	0.0	0.00	0.00	0.00
400.0	0.00	0.00	400.0	0.0	0.0	0.0	0.00	0.00	0.00
440.0	0.00	0.00	440.0	0.0	0.0	0.0	0.00	0.00	0.00
480.0	0.00	0.00	480.0	0.0	0.0	0.0	0.00	0.00	0.00
520.0	0.00	0.00	520.0	0.0	0.0	0.0	0.00	0.00	0.00
560.0	0.00	0.00	560.0	0.0	0.0	0.0	0.00	0.00	0.00
600.0	0.00	0.00	600.0	0.0	0.0	0.0	0.00	0.00	0.00
640.0	0.00	0.00	640.0	0.0	0.0	0.0	0.00	0.00	0.00
680.0	0.00	0.00	680.0	0.0	0.0	0.0	0.00	0.00	0.00
720.0	0.00	0.00	720.0	0.0	0.0	0.0	0.00	0.00	0.00
760.0	0.00	0.00	760.0	0.0	0.0	0.0	0.00	0.00	0.00
800.0	0.00	0.00	800.0	0.0	0.0	0.0	0.00	0.00	0.00
840.0	0.00	0.00	840.0	0.0	0.0	0.0	0.00	0.00	0.00
880.0	0.00	0.00	880.0	0.0	0.0	0.0	0.00	0.00	0.00
920.0	0.00	0.00	920.0	0.0	0.0	0.0	0.00	0.00	0.00
960.0	0.00	0.00	960.0	0.0	0.0	0.0	0.00	0.00	0.00
1,000.0	0.00	0.00	1,000.0	0.0	0.0	0.0	0.00	0.00	0.00
1,040.0	0.80	120.98	1,040.0	-0.1	0.2	0.3	2.00	2.00	0.00
1,080.0	1.60	120.98	1,080.0	-0.6	1.0	1.1	2.00	2.00	0.00
1,120.0	2.40	120.98	1,120.0	-1.3	2.2	2.5	2.00	2.00	0.00
1,160.0	3.20	120.98	1,159.9	-2.3	3.8	4.5	2.00	2.00	0.00
1,200.0	4.00	120.98	1,199.8	-3.6	6.0	7.0	2.00	2.00	0.00
1,240.0	4.80	120.98	1,239.7	-5.2	8.6	10.0	2.00	2.00	0.00
1,280.0	5.60	120.98	1,279.6	-7.0	11.7	13.7	2.00	2.00	0.00
1,320.0	6.40	120.98	1,319.3	-9.2	15.3	17.9	2.00	2.00	0.00
1,360.0	7.20	120.98	1,359.1	-11.6	19.4	22.6	2.00	2.00	0.00
1,400.0	8.00	120.98	1,398.7	-14.4	23.9	27.9	2.00	2.00	0.00
1,440.0	8.80	120.98	1,438.3	-17.4	28.9	33.7	2.00	2.00	0.00
1,480.0	9.60	120.98	1,477.8	-20.7	34.4	40.1	2.00	2.00	0.00
1,520.0	10.40	120.98	1,517.1	-24.2	40.4	47.1	2.00	2.00	0.00
1,560.0	11.20	120.98	1,556.4	-28.1	46.8	54.6	2.00	2.00	0.00
1,600.0	12.00	120.98	1,595.6	-32.2	53.7	62.6	2.00	2.00	0.00
1,640.0	12.80	120.98	1,634.7	-36.6	61.0	71.2	2.00	2.00	0.00
1,680.0	13.60	120.98	1,673.6	-41.3	68.9	80.3	2.00	2.00	0.00
1,720.0	14.40	120.98	1,712.4	-46.3	77.2	90.0	2.00	2.00	0.00
1,760.0	15.20	120.98	1,751.1	-51.6	85.9	100.2	2.00	2.00	0.00
1,800.0	16.00	120.98	1,789.6	-57.1	95.1	111.0	2.00	2.00	0.00
1,803.9	16.08	120.98	1,793.4	-57.7	96.1	112.0	2.00	2.00	0.00
1,840.0	16.08	120.98	1,828.1	-62.8	104.6	122.1	0.00	0.00	0.00
1,880.0	16.08	120.98	1,866.5	-68.5	114.1	133.1	0.00	0.00	0.00
1,920.0	16.08	120.98	1,905.0	-74.2	123.6	144.2	0.00	0.00	0.00
1,960.0	16.08	120.98	1,943.4	-79.9	133.1	155.3	0.00	0.00	0.00
2,000.0	16.08	120.98	1,981.8	-85.6	142.6	166.4	0.00	0.00	0.00
2,040.0	16.08	120.98	2,020.3	-91.3	152.1	177.4	0.00	0.00	0.00
2,080.0	16.08	120.98	2,058.7	-97.0	161.6	188.5	0.00	0.00	0.00



Database:	EDM den0-adp01 Server Data	Local Co-ordinate Reference:	Well BEDDO P25-22D
Company:	NOBLE ENERGY INC WELD COUNTY CO	TVD Reference:	WELL @ 4818.0ft (Original Well Elev)
Project:	SEC.25-T3N-R67W	MD Reference:	WELL @ 4818.0ft (Original Well Elev)
Site:	BEDDO P25-22D Pad Sec.25-T3N-R67W	North Reference:	True
Well:	BEDDO P25-22D	Survey Calculation Method:	Minimum Curvature
Wellbore:	BEDDO P25-22D		
Design:	Noble BEDDO P25-22D Plan #2 (9-30-09)		

Planned Survey

Measured Depth (ft)	Inclination (°)	Azimuth (°)	Vertical Depth (ft)	+N/-S (ft)	+E/-W (ft)	Vertical Section (ft)	Dogleg Rate (°/100ft)	Build Rate (°/100ft)	Turn Rate (°/100ft)
2,120.0	16.08	120.98	2,097.1	-102.7	171.1	199.6	0.00	0.00	0.00
2,160.0	16.08	120.98	2,135.6	-108.4	180.6	210.7	0.00	0.00	0.00
2,200.0	16.08	120.98	2,174.0	-114.1	190.1	221.7	0.00	0.00	0.00
2,240.0	16.08	120.98	2,212.4	-119.8	199.6	232.8	0.00	0.00	0.00
2,280.0	16.08	120.98	2,250.9	-125.5	209.1	243.9	0.00	0.00	0.00
2,320.0	16.08	120.98	2,289.3	-131.2	218.6	255.0	0.00	0.00	0.00
2,360.0	16.08	120.98	2,327.7	-136.9	228.1	266.1	0.00	0.00	0.00
2,400.0	16.08	120.98	2,366.2	-142.7	237.6	277.1	0.00	0.00	0.00
2,440.0	16.08	120.98	2,404.6	-148.4	247.1	288.2	0.00	0.00	0.00
2,480.0	16.08	120.98	2,443.0	-154.1	256.6	299.3	0.00	0.00	0.00
2,520.0	16.08	120.98	2,481.5	-159.8	266.1	310.4	0.00	0.00	0.00
2,560.0	16.08	120.98	2,519.9	-165.5	275.6	321.4	0.00	0.00	0.00
2,600.0	16.08	120.98	2,558.4	-171.2	285.1	332.5	0.00	0.00	0.00
2,640.0	16.08	120.98	2,596.8	-176.9	294.6	343.6	0.00	0.00	0.00
2,680.0	16.08	120.98	2,635.2	-182.6	304.1	354.7	0.00	0.00	0.00
2,720.0	16.08	120.98	2,673.7	-188.3	313.6	365.8	0.00	0.00	0.00
2,760.0	16.08	120.98	2,712.1	-194.0	323.1	376.8	0.00	0.00	0.00
2,800.0	16.08	120.98	2,750.5	-199.7	332.6	387.9	0.00	0.00	0.00
2,840.0	16.08	120.98	2,789.0	-205.4	342.1	399.0	0.00	0.00	0.00
2,880.0	16.08	120.98	2,827.4	-211.1	351.6	410.1	0.00	0.00	0.00
2,920.0	16.08	120.98	2,865.8	-216.8	361.1	421.1	0.00	0.00	0.00
2,960.0	16.08	120.98	2,904.3	-222.5	370.6	432.2	0.00	0.00	0.00
3,000.0	16.08	120.98	2,942.7	-228.2	380.1	443.3	0.00	0.00	0.00
3,040.0	16.08	120.98	2,981.1	-233.9	389.6	454.4	0.00	0.00	0.00
3,080.0	16.08	120.98	3,019.6	-239.6	399.0	465.4	0.00	0.00	0.00
3,120.0	16.08	120.98	3,058.0	-245.3	408.5	476.5	0.00	0.00	0.00
3,160.0	16.08	120.98	3,096.5	-251.0	418.0	487.6	0.00	0.00	0.00
3,200.0	16.08	120.98	3,134.9	-256.7	427.5	498.7	0.00	0.00	0.00
3,240.0	16.08	120.98	3,173.3	-262.4	437.0	509.8	0.00	0.00	0.00
3,280.0	16.08	120.98	3,211.8	-268.1	446.5	520.8	0.00	0.00	0.00
3,320.0	16.08	120.98	3,250.2	-273.8	456.0	531.9	0.00	0.00	0.00
3,360.0	16.08	120.98	3,288.6	-279.5	465.5	543.0	0.00	0.00	0.00
3,400.0	16.08	120.98	3,327.1	-285.2	475.0	554.1	0.00	0.00	0.00
3,440.0	16.08	120.98	3,365.5	-290.9	484.5	565.1	0.00	0.00	0.00
3,480.0	16.08	120.98	3,403.9	-296.6	494.0	576.2	0.00	0.00	0.00
3,520.0	16.08	120.98	3,442.4	-302.3	503.5	587.3	0.00	0.00	0.00
3,560.0	16.08	120.98	3,480.8	-308.0	513.0	598.4	0.00	0.00	0.00
3,600.0	16.08	120.98	3,519.2	-313.7	522.5	609.5	0.00	0.00	0.00
3,640.0	16.08	120.98	3,557.7	-319.4	532.0	620.5	0.00	0.00	0.00
3,680.0	16.08	120.98	3,596.1	-325.1	541.5	631.6	0.00	0.00	0.00
3,720.0	16.08	120.98	3,634.6	-330.8	551.0	642.7	0.00	0.00	0.00
3,760.0	16.08	120.98	3,673.0	-336.5	560.5	653.8	0.00	0.00	0.00
3,800.0	16.08	120.98	3,711.4	-342.2	570.0	664.8	0.00	0.00	0.00
3,840.0	16.08	120.98	3,749.9	-347.9	579.5	675.9	0.00	0.00	0.00
3,880.0	16.08	120.98	3,788.3	-353.6	589.0	687.0	0.00	0.00	0.00
3,920.0	16.08	120.98	3,826.7	-359.3	598.5	698.1	0.00	0.00	0.00
3,960.0	16.08	120.98	3,865.2	-365.0	608.0	709.1	0.00	0.00	0.00
4,000.0	16.08	120.98	3,903.6	-370.7	617.5	720.2	0.00	0.00	0.00
4,040.0	16.08	120.98	3,942.0	-376.4	627.0	731.3	0.00	0.00	0.00
4,080.0	16.08	120.98	3,980.5	-382.1	636.5	742.4	0.00	0.00	0.00
4,120.0	16.08	120.98	4,018.9	-387.8	646.0	753.5	0.00	0.00	0.00
4,160.0	16.08	120.98	4,057.3	-393.5	655.5	764.5	0.00	0.00	0.00
4,200.0	16.08	120.98	4,095.8	-399.2	665.0	775.6	0.00	0.00	0.00
4,240.0	16.08	120.98	4,134.2	-404.9	674.5	786.7	0.00	0.00	0.00



Database:	EDM den0-adp01 Server Data	Local Co-ordinate Reference:	Well BEDDO P25-22D
Company:	NOBLE ENERGY INC WELD COUNTY CO	TVD Reference:	WELL @ 4818.0ft (Original Well Elev)
Project:	SEC.25-T3N-R67W	MD Reference:	WELL @ 4818.0ft (Original Well Elev)
Site:	BEDDO P25-22D Pad Sec.25-T3N-R67W	North Reference:	True
Well:	BEDDO P25-22D	Survey Calculation Method:	Minimum Curvature
Wellbore:	BEDDO P25-22D		
Design:	Noble BEDDO P25-22D Plan #2 (9-30-09)		

Planned Survey

Measured Depth (ft)	Inclination (°)	Azimuth (°)	Vertical Depth (ft)	+N/-S (ft)	+E/-W (ft)	Vertical Section (ft)	Dogleg Rate (°/100ft)	Build Rate (°/100ft)	Turn Rate (°/100ft)
4,280.0	16.08	120.98	4,172.6	-410.6	684.0	797.8	0.00	0.00	0.00
4,320.0	16.08	120.98	4,211.1	-416.3	693.5	808.8	0.00	0.00	0.00
4,360.0	16.08	120.98	4,249.5	-422.0	703.0	819.9	0.00	0.00	0.00
4,400.0	16.08	120.98	4,288.0	-427.7	712.5	831.0	0.00	0.00	0.00
4,440.0	16.08	120.98	4,326.4	-433.4	722.0	842.1	0.00	0.00	0.00
4,480.0	16.08	120.98	4,364.8	-439.2	731.4	853.2	0.00	0.00	0.00
4,520.0	16.08	120.98	4,403.3	-444.9	740.9	864.2	0.00	0.00	0.00
4,560.0	16.08	120.98	4,441.7	-450.6	750.4	875.3	0.00	0.00	0.00
4,600.0	16.08	120.98	4,480.1	-456.3	759.9	886.4	0.00	0.00	0.00
4,640.0	16.08	120.98	4,518.6	-462.0	769.4	897.5	0.00	0.00	0.00
4,680.0	16.08	120.98	4,557.0	-467.7	778.9	908.5	0.00	0.00	0.00
4,720.0	16.08	120.98	4,595.4	-473.4	788.4	919.6	0.00	0.00	0.00
4,760.0	16.08	120.98	4,633.9	-479.1	797.9	930.7	0.00	0.00	0.00
4,800.0	16.08	120.98	4,672.3	-484.8	807.4	941.8	0.00	0.00	0.00
4,840.0	16.08	120.98	4,710.7	-490.5	816.9	952.8	0.00	0.00	0.00
4,880.0	16.08	120.98	4,749.2	-496.2	826.4	963.9	0.00	0.00	0.00
4,920.0	16.08	120.98	4,787.6	-501.9	835.9	975.0	0.00	0.00	0.00
4,960.0	16.08	120.98	4,826.1	-507.6	845.4	986.1	0.00	0.00	0.00
5,000.0	16.08	120.98	4,864.5	-513.3	854.9	997.2	0.00	0.00	0.00
5,040.0	16.08	120.98	4,902.9	-519.0	864.4	1,008.2	0.00	0.00	0.00
5,043.9	16.08	120.98	4,906.6	-519.5	865.3	1,009.3	0.00	0.00	0.00
5,080.0	15.35	120.98	4,941.4	-524.6	873.7	1,019.1	2.00	-2.00	0.00
5,120.0	14.55	120.98	4,980.1	-529.9	882.6	1,029.4	2.00	-2.00	0.00
5,160.0	13.75	120.98	5,018.9	-534.9	891.0	1,039.2	2.00	-2.00	0.00
5,200.0	12.95	120.98	5,057.8	-539.7	898.9	1,048.4	2.00	-2.00	0.00
5,240.0	12.15	120.98	5,096.8	-544.1	906.3	1,057.1	2.00	-2.00	0.00
5,280.0	11.35	120.98	5,136.0	-548.3	913.3	1,065.3	2.00	-2.00	0.00
5,320.0	10.55	120.98	5,175.2	-552.3	919.8	1,072.9	2.00	-2.00	0.00
5,360.0	9.75	120.98	5,214.6	-555.9	925.9	1,079.9	2.00	-2.00	0.00
5,400.0	8.95	120.98	5,254.1	-559.2	931.5	1,086.4	2.00	-2.00	0.00
5,440.0	8.15	120.98	5,293.6	-562.3	936.6	1,092.4	2.00	-2.00	0.00
5,480.0	7.35	120.98	5,333.3	-565.1	941.2	1,097.8	2.00	-2.00	0.00
5,520.0	6.55	120.98	5,373.0	-567.6	945.3	1,102.6	2.00	-2.00	0.00
5,560.0	5.75	120.98	5,412.8	-569.8	949.0	1,106.9	2.00	-2.00	0.00
5,600.0	4.95	120.98	5,452.6	-571.7	952.2	1,110.6	2.00	-2.00	0.00
5,640.0	4.15	120.98	5,492.4	-573.3	954.9	1,113.8	2.00	-2.00	0.00
5,680.0	3.35	120.98	5,532.4	-574.7	957.2	1,116.4	2.00	-2.00	0.00
5,720.0	2.55	120.98	5,572.3	-575.7	958.9	1,118.5	2.00	-2.00	0.00
5,760.0	1.75	120.98	5,612.3	-576.5	960.2	1,120.0	2.00	-2.00	0.00
5,800.0	0.95	120.98	5,652.3	-577.0	961.0	1,121.0	2.00	-2.00	0.00
5,840.0	0.15	120.98	5,692.3	-577.2	961.4	1,121.3	2.00	-2.00	0.00
5,847.7	0.00	0.00	5,700.0	-577.2	961.4	1,121.3	2.00	-2.00	0.00
TARGET BHL 2560'FNL, 1270'FEL									
5,880.0	0.00	0.00	5,732.3	-577.2	961.4	1,121.3	0.00	0.00	0.00
5,920.0	0.00	0.00	5,772.3	-577.2	961.4	1,121.3	0.00	0.00	0.00
5,960.0	0.00	0.00	5,812.3	-577.2	961.4	1,121.3	0.00	0.00	0.00
6,000.0	0.00	0.00	5,852.3	-577.2	961.4	1,121.3	0.00	0.00	0.00
6,040.0	0.00	0.00	5,892.3	-577.2	961.4	1,121.3	0.00	0.00	0.00
6,080.0	0.00	0.00	5,932.3	-577.2	961.4	1,121.3	0.00	0.00	0.00
6,120.0	0.00	0.00	5,972.3	-577.2	961.4	1,121.3	0.00	0.00	0.00
6,160.0	0.00	0.00	6,012.3	-577.2	961.4	1,121.3	0.00	0.00	0.00
6,200.0	0.00	0.00	6,052.3	-577.2	961.4	1,121.3	0.00	0.00	0.00
6,240.0	0.00	0.00	6,092.3	-577.2	961.4	1,121.3	0.00	0.00	0.00



Database:	EDM den0-adp01 Server Data	Local Co-ordinate Reference:	Well BEDDO P25-22D
Company:	NOBLE ENERGY INC WELD COUNTY CO	TVD Reference:	WELL @ 4818.0ft (Original Well Elev)
Project:	SEC.25-T3N-R67W	MD Reference:	WELL @ 4818.0ft (Original Well Elev)
Site:	BEDDO P25-22D Pad Sec.25-T3N-R67W	North Reference:	True
Well:	BEDDO P25-22D	Survey Calculation Method:	Minimum Curvature
Wellbore:	BEDDO P25-22D		
Design:	Noble BEDDO P25-22D Plan #2 (9-30-09)		

## Planned Survey

Measured Depth (ft)	Inclination (°)	Azimuth (°)	Vertical Depth (ft)	+N/-S (ft)	+E/-W (ft)	Vertical Section (ft)	Dogleg Rate (°/100ft)	Build Rate (°/100ft)	Turn Rate (°/100ft)
6,280.0	0.00	0.00	6,132.3	-577.2	961.4	1,121.3	0.00	0.00	0.00
6,320.0	0.00	0.00	6,172.3	-577.2	961.4	1,121.3	0.00	0.00	0.00
6,360.0	0.00	0.00	6,212.3	-577.2	961.4	1,121.3	0.00	0.00	0.00
6,400.0	0.00	0.00	6,252.3	-577.2	961.4	1,121.3	0.00	0.00	0.00
6,440.0	0.00	0.00	6,292.3	-577.2	961.4	1,121.3	0.00	0.00	0.00
6,480.0	0.00	0.00	6,332.3	-577.2	961.4	1,121.3	0.00	0.00	0.00
6,520.0	0.00	0.00	6,372.3	-577.2	961.4	1,121.3	0.00	0.00	0.00
6,560.0	0.00	0.00	6,412.3	-577.2	961.4	1,121.3	0.00	0.00	0.00
6,600.0	0.00	0.00	6,452.3	-577.2	961.4	1,121.3	0.00	0.00	0.00
6,640.0	0.00	0.00	6,492.3	-577.2	961.4	1,121.3	0.00	0.00	0.00
6,680.0	0.00	0.00	6,532.3	-577.2	961.4	1,121.3	0.00	0.00	0.00
6,720.0	0.00	0.00	6,572.3	-577.2	961.4	1,121.3	0.00	0.00	0.00
6,760.0	0.00	0.00	6,612.3	-577.2	961.4	1,121.3	0.00	0.00	0.00
6,800.0	0.00	0.00	6,652.3	-577.2	961.4	1,121.3	0.00	0.00	0.00
6,840.0	0.00	0.00	6,692.3	-577.2	961.4	1,121.3	0.00	0.00	0.00
6,880.0	0.00	0.00	6,732.3	-577.2	961.4	1,121.3	0.00	0.00	0.00
6,920.0	0.00	0.00	6,772.3	-577.2	961.4	1,121.3	0.00	0.00	0.00
6,960.0	0.00	0.00	6,812.3	-577.2	961.4	1,121.3	0.00	0.00	0.00
7,000.0	0.00	0.00	6,852.3	-577.2	961.4	1,121.3	0.00	0.00	0.00
7,040.0	0.00	0.00	6,892.3	-577.2	961.4	1,121.3	0.00	0.00	0.00
7,080.0	0.00	0.00	6,932.3	-577.2	961.4	1,121.3	0.00	0.00	0.00
7,120.0	0.00	0.00	6,972.3	-577.2	961.4	1,121.3	0.00	0.00	0.00
7,160.0	0.00	0.00	7,012.3	-577.2	961.4	1,121.3	0.00	0.00	0.00
7,160.7	0.00	0.00	7,013.0	-577.2	961.4	1,121.3	0.00	0.00	0.00
<b>NOBRARA</b>									
7,200.0	0.00	0.00	7,052.3	-577.2	961.4	1,121.3	0.00	0.00	0.00
7,240.0	0.00	0.00	7,092.3	-577.2	961.4	1,121.3	0.00	0.00	0.00
7,280.0	0.00	0.00	7,132.3	-577.2	961.4	1,121.3	0.00	0.00	0.00
7,320.0	0.00	0.00	7,172.3	-577.2	961.4	1,121.3	0.00	0.00	0.00
7,360.0	0.00	0.00	7,212.3	-577.2	961.4	1,121.3	0.00	0.00	0.00
7,400.0	0.00	0.00	7,252.3	-577.2	961.4	1,121.3	0.00	0.00	0.00
7,440.0	0.00	0.00	7,292.3	-577.2	961.4	1,121.3	0.00	0.00	0.00
7,445.7	0.00	0.00	7,298.0	-577.2	961.4	1,121.3	0.00	0.00	0.00
<b>CODELL</b>									
7,480.0	0.00	0.00	7,332.3	-577.2	961.4	1,121.3	0.00	0.00	0.00
7,520.0	0.00	0.00	7,372.3	-577.2	961.4	1,121.3	0.00	0.00	0.00
7,560.0	0.00	0.00	7,412.3	-577.2	961.4	1,121.3	0.00	0.00	0.00
7,600.0	0.00	0.00	7,452.3	-577.2	961.4	1,121.3	0.00	0.00	0.00
7,640.0	0.00	0.00	7,492.3	-577.2	961.4	1,121.3	0.00	0.00	0.00
7,680.0	0.00	0.00	7,532.3	-577.2	961.4	1,121.3	0.00	0.00	0.00
7,720.0	0.00	0.00	7,572.3	-577.2	961.4	1,121.3	0.00	0.00	0.00
7,760.0	0.00	0.00	7,612.3	-577.2	961.4	1,121.3	0.00	0.00	0.00
7,800.0	0.00	0.00	7,652.3	-577.2	961.4	1,121.3	0.00	0.00	0.00
7,840.0	0.00	0.00	7,692.3	-577.2	961.4	1,121.3	0.00	0.00	0.00
7,880.0	0.00	0.00	7,732.3	-577.2	961.4	1,121.3	0.00	0.00	0.00
7,890.7	0.00	0.00	7,743.0	-577.2	961.4	1,121.3	0.00	0.00	0.00
<b>J-SAND</b>									
7,920.0	0.00	0.00	7,772.3	-577.2	961.4	1,121.3	0.00	0.00	0.00
7,960.0	0.00	0.00	7,812.3	-577.2	961.4	1,121.3	0.00	0.00	0.00
8,000.0	0.00	0.00	7,852.3	-577.2	961.4	1,121.3	0.00	0.00	0.00
8,040.0	0.00	0.00	7,892.3	-577.2	961.4	1,121.3	0.00	0.00	0.00
8,080.0	0.00	0.00	7,932.3	-577.2	961.4	1,121.3	0.00	0.00	0.00
8,090.7	0.00	0.00	7,943.0	-577.2	961.4	1,121.3	0.00	0.00	0.00

HARDLINE 79'S OF BEDDO P25-22D BHL

Database: EDM den0-adp01 Server Data  
Company: NOBLE ENERGY INC WELD COUNTY CO  
Project: SEC.25-T3N-R67W  
Site: BEDDO P25-22D Pad Sec.25-T3N-R67W  
Well: BEDDO P25-22D  
Wellbore: BEDDO P25-22D  
Design: Noble BEDDO P25-22D Plan #2 (9-30-09)

Local Co-ordinate Reference: Well BEDDO P25-22D  
TVD Reference: WELL @ 4818.0ft (Original Well Elev)  
MD Reference: WELL @ 4818.0ft (Original Well Elev)  
North Reference: True  
Survey Calculation Method: Minimum Curvature

#### Planned Survey

Measured Depth (ft)	Inclination (°)	Azimuth (°)	Vertical Depth (ft)	+N/-S (ft)	+E/-W (ft)	Vertical Section (ft)	Dogleg Rate (°/100ft)	Build Rate (°/100ft)	Turn Rate (°/100ft)
---------------------	-----------------	-------------	---------------------	------------	------------	-----------------------	-----------------------	----------------------	---------------------

#### Targets

##### Target Name

- hit/miss target	Dip Angle (°)	Dip Dir. (°)	TVD (ft)	+N/-S (ft)	+E/-W (ft)	Northing (ft)	Easting (ft)	Latitude	Longitude
- Shape									
HARDLINE 79'S OF E	0.00	0.00	7,943.0	-656.2	861.4	1,314,836.02	3,185,800.24	40° 11' 44.551 N	104° 50' 5.556 W
- plan misses target center by 127.4ft at 8090.7ft MD (7943.0 TVD, -577.2 N, 961.4 E)									
- Polygon									
Point 1			7,943.0	0.0	0.0	1,314,836.02	3,185,800.24		
Point 2			7,943.0	0.0	200.0	1,314,837.51	3,186,000.22		
TARGET BHL 2560'F	0.00	0.00	5,700.0	-577.2	961.4	1,314,915.76	3,185,899.63	40° 11' 45.332 N	104° 50' 4.267 W
- plan hits target center									
- Point									

#### Formations

Measured Depth (ft)	Vertical Depth (ft)	Name	Lithology	Dip (°)	Dip Direction (°)
7,160.7	7,013.0	NIOBRARA		0.00	
7,445.7	7,298.0	CODELL		0.00	
7,890.7	7,743.0	J-SAND		0.00	