

BERRY PETROLEUM COMPANY

BOTTOM HOLE FOOTAGE

WELL PAD F28 697

SECTION 28, T6S, R97W, 6th P.M.
SE 1/4 NW 1/4

Date: 08-19-09

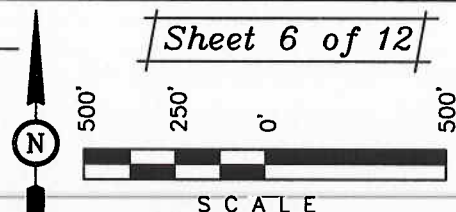
Drawn By: D.R.B.

Revised: 09-28-09 D.R.B.

Revised: 10-01-09 D.R.B.

N89°47'47"W - 2640.99' (Meas.)

Sheet 6 of 12



SCALE

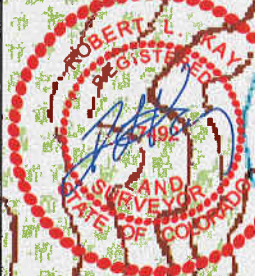
1917 Brass Cap
1.5' High
Lat: 39.501242
Long: 108.224778

NW Cor Sec 28
4x4 1917 Brass
Cap, 1.0' High
Lat: 39.503069
Long: 108.234139

Comp. from
Witness corner

660.00' (C.L.O.)
N00°00'07"E - 2646.22' (Meas.)

1917 Brass Cap, 1.7'
High, (2) 4x4 Posts
Lat: 39.4933994
Long: 108.234119



BOTTOM HOLE
OXY 28-320

BOTTOM HOLE
OXY 28-310

BOTTOM HOLE
OXY 28-300

BOTTOM HOLE
OXY 28-290

BOTTOM HOLE
OXY 28-280

BOTTOM HOLE
OXY 28-270

BOTTOM HOLE
OXY 28-260

BOTTOM HOLE
OXY 28-250

BOTTOM HOLE
OXY 28-240

BOTTOM HOLE
OXY 28-230

BOTTOM HOLE
OXY 28-220

BOTTOM HOLE
OXY 28-210

BOTTOM HOLE
OXY 28-200

Existing Road
BOTTOM HOLE
OXY 28-190

F28 697

BOTTOM HOLE
OXY 28-180

BOTTOM HOLE
OXY 28-170

BOTTOM HOLE
OXY 28-150

N42°39'29"W
2172.27'

N42°39'29"W
2172.27'

N55°50'14"W
1918.46'

N55°50'14"W
1918.46'

N72°44'53"W
1685.95'

N72°44'53"W
1685.95'

N82°54'36"W
1569.18'

N82°54'36"W
1569.18'

S85°26'39"W
1595.91'

S85°26'39"W
1595.91'

S74°50'21"W
1713.07'

S74°50'21"W
1713.07'

S42°30'04"E
1537.17'

S42°30'04"E
1537.17'

| LINE TABLE | | |
|------------|-------------|----------|
| LINE | BEARING | LENGTH |
| L1 | N27°16'55"W | 519.44' |
| L2 | N18°28'50"W | 804.82' |
| L3 | N13°37'09"W | 1457.89' |
| L4 | N12°04'20"W | 1814.65' |
| L5 | N11°21'38"W | 1134.08' |
| L6 | S59°08'01"W | 285.34' |
| L7 | S32°32'46"W | 519.49' |

Note:
A line between the Surface Location
#28-190 and Bottom Hole bears
N41°34'57"W 280.06'.

UINTAH ENGINEERING & LAND SURVEYING
85 So. 200 East • Vernal, Utah 84078 • (435) 789-1017