

T6S, R97W, 6th P.M.

BERRY PETROLEUM COMPANY

Well location, OXY 28-19D F28 697, located as shown in the SE 1/4 NW 1/4 of Section 28, T6S, R97W, 6th P.M., Garfield County, Colorado.

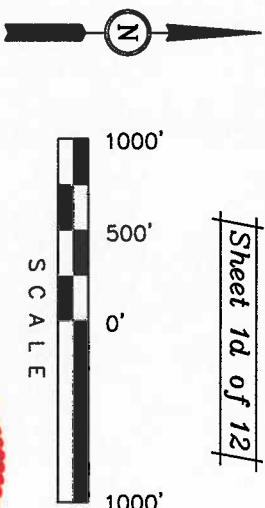
BASIS OF ELEVATION

SPOT ELEVATION AT THE NORTHWEST CORNER OF SECTION 30, T5S, R95W, 6th P.M. TAKEN FROM THE FORKED GULCH QUADRANGLE, COLORADO, GARFIELD COUNTY, 7.5 MINUTE SERIES (TOPOGRAPHICAL MAP) PUBLISHED BY THE UNITED STATES DEPARTMENT OF THE INTERIOR, GEOLOGICAL SURVEY. SAID ELEVATION IS MARKED AS BEING 5966 FEET.

BASIS OF BEARINGS

BASIS OF BEARINGS IS A G.P.S. OBSERVATION.

Sheet 1d of 12



CERTIFICATE OF SURVEY

THIS IS TO CERTIFY THAT THE ABOVE MAP WAS PREPARED FROM FIELD NOTES OF ACTUAL SURVEY MADE BY ME OR UNDER MY SUPERVISION AND THAT THE SAME ARE TRUE AND CORRECT TO THE BEST OF MY KNOWLEDGE AND BELIEF.

N 1/4 Cor Sec 34
W.C. 1917 Brass
Cap, 2.2' High
Lot: 39.486769
Long: 108.206467
East-105.60'
(G.L.O.)
True Position

UNTAH ENGINEERING & LAND SURVEYING

85 SOUTH 200 EAST - VERNAL, UTAH 84078
(435) 789-1017

SCALE 1" = 1000'

PARTY	DATE SURVEYED:	DATE DRAWN:
B.J. B.B. D.R.B.	08-11-09	08-20-09
WEATHER	REFERENCES	FILE
WARM	G.L.O. PLAT	BERRY PETROLEUM COMPANY

