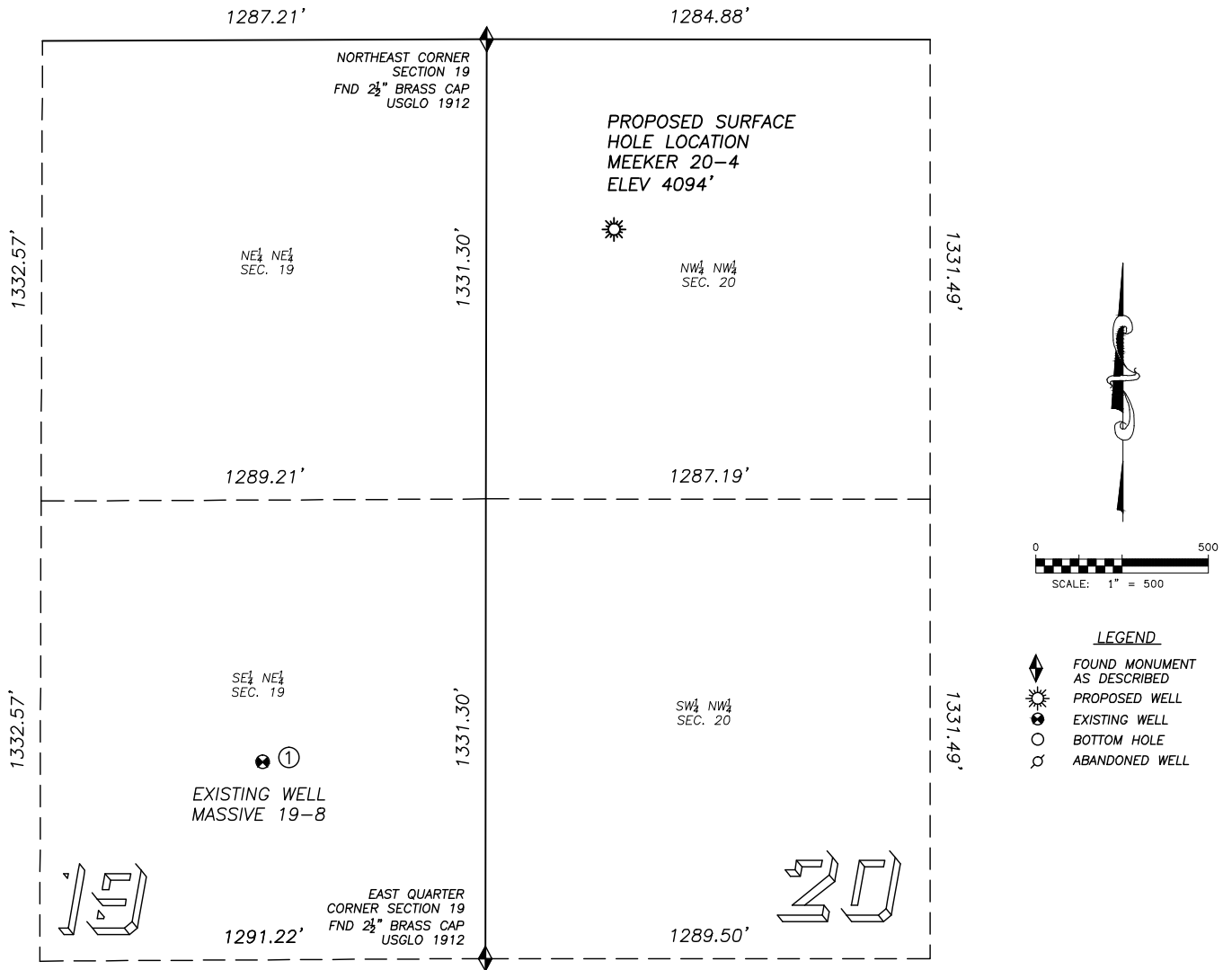


SITE SKETCH MEEKER 20-4

SECTION 20, TOWNSHIP 2 SOUTH, RANGE 46 WEST OF THE 6TH PRINCIPAL MERIDIAN



①
MASSIVE 19-8
 SE/NE SEC. 19
 2091' FNL, 646' FEL
 1843' SW OF PROPOSED
 SURFACE HOLE LOCATION
 LAT. N39.86960°
 LONG. W102.56011°
 EL: 4099'
 PDOP 3.1

NOTES:
 1. THIS DOES NOT REPRESENT A BOUNDARY SURVEY
 2. THE LATITUDES AND LONGITUDES SHOWN ARE REFERENCED TO NAD83
 3. DATUM FOR ELEVATION IS NAVD88. ELEVATIONS ARE DERIVED FROM GPS-RTK OBSERVATIONS PROCESSED THROUGH OPUS, UTILIZING THE GEOID03 MODEL.