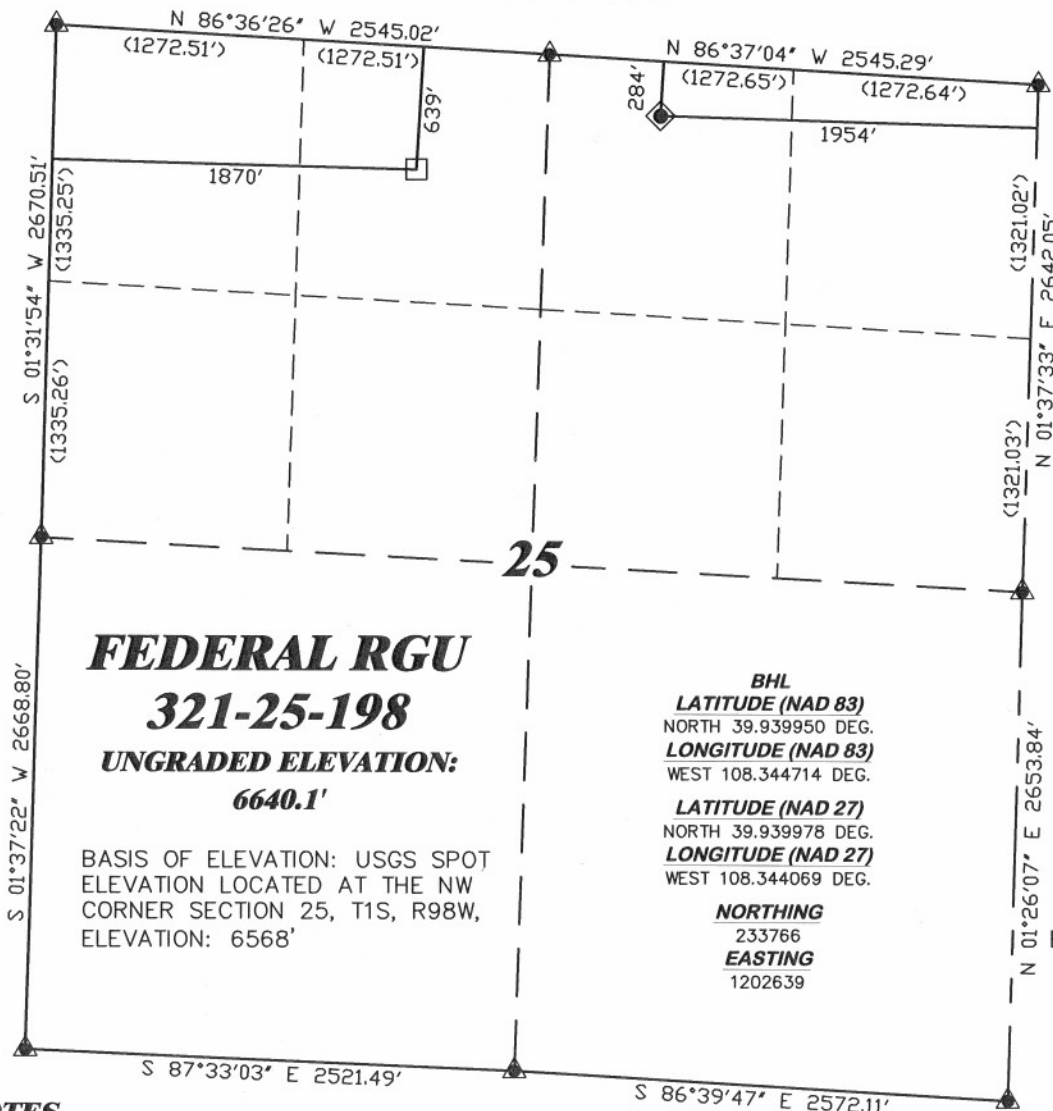


R. 98 W.



SCALE 1" = 1000'

T. 1 S.



LATITUDE (NAD 83)
NORTH 39.940832 DEG.
LONGITUDE (NAD 83)
WEST 108.340215 DEG.

LATITUDE (NAD 27)
NORTH 39.940860 DEG.
LONGITUDE (NAD 27)
WEST 108.339570 DEG.

NORTHING
234046.87
EASTING
1203909.50

BASIS OF BEARING/DATUM
SPCS CO NORTH NAD 27
BASED ON NGS TRIANGULATION
STATION "BINER"

BHL
LATITUDE (NAD 83)
NORTH 39.939950 DEG.
LONGITUDE (NAD 83)
WEST 108.344714 DEG.

LATITUDE (NAD 27)
NORTH 39.939978 DEG.
LONGITUDE (NAD 27)
WEST 108.344069 DEG.

NORTHING
233766
EASTING
1202639

NOTES

HIGH PLATEAU DESERT
NO EXISTING FEATURES WITHIN
400' RADIUS OF WELL SITE.

GPS OPERATOR MARK BESSIE
OBSERVED A PDOP OF 2.4.
ALL GPS OBSERVATIONS ARE IN
COMPLIANCE WITH COGCC RULE No.215.



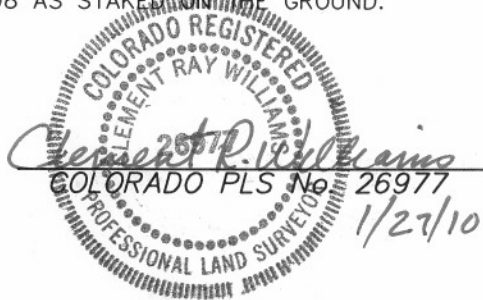
SURVEYOR'S STATEMENT

I, CLEMENT R. WILLIAMS, OF ROCK SPRINGS, WYOMING, HEREBY STATE: THIS MAP WAS MADE FROM NOTES TAKEN DURING AN ACTUAL FIELD SURVEY DONE UNDER MY DIRECT SUPERVISION ON OCTOBER 8, 2008 AND THAT THIS PLAT CORRECTLY SHOWS THE LOCATION OF FEDERAL RGU 321-25-198 AS STAKED ON THE GROUND.

LEGEND

- ◆ WELL LOCATION
- BOTTOM HOLE LOC. (APPROX)
- FOUND MONUMENT
- ▲ PREVIOUSLY FOUND MONUMENT

FEDERAL RGU 31-25-198 PAD



RIFFIN & ASSOCIATES, INC.

(307) 362-5028

1414 ELK ST., ROCK SPRINGS, WY 82901

DRAWN: 10/21/09 - MMM

SCALE: 1" = 1000'

REVISED: 1/27/10 - MMM

DRG JOB No. 17148

REVISED BHL

EXHIBIT 1

**PLAT OF DRILLING LOCATION
FOR
WILLIAMS PRODUCTION RMT COMPANY**
**284' F/NL & 1954' F/EL, SECTION 25,
T. 1 S., R. 98 W., 6th P.M.
RIO BLANCO COUNTY, COLORADO**