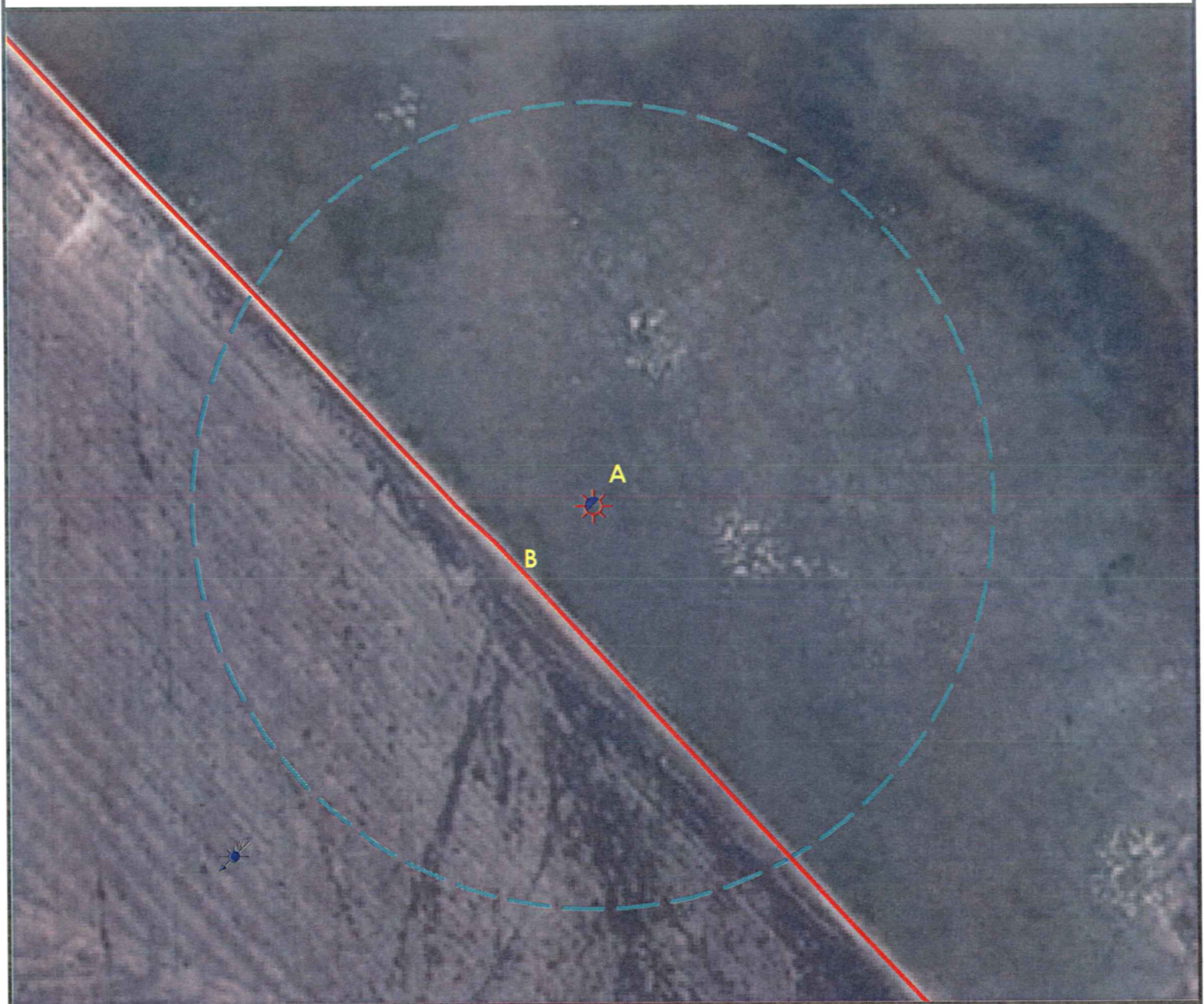
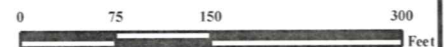


Location Drawing



A. Proposed Well HAYS 03-03.

B, Existing Access Road is 96' SW.



Legend

- | | | | |
|--|----------------------|--|-----------------------|
| | Proposed Well | | Building/Residence |
| | Existing Well | | Oil & Gas Equipment |
| | Water Well | | Water Body |
| | Pedestal | | Utility Box |
| | CattleGuard/Gate | | Railroad |
| | Bridge | | Fence |
| | ECD | | Overhead Power Line |
| | 400' Radius | | Pipeline |
| | Facilities Enclosure | | Access Road |
| | | | Ditch/Canal |
| | | | Concrete Walled Ditch |

400ft Radius Map

HAYS 03-03

Surface Location: T2S R44W S03

Description of surface uses : Dry Land Crop

Field Date: 12/13/2009
 Drawing Date: 3/1/2010
 Drafter: BHF
 Checked By: BHF

Aerial Photo supplied by NAIP - 2009

Prepared for:
 Rosetta Resources
 Operating LP
 717 Texas Avenue, Ste. 2800
 Houston, TX 77002



Use our resources to find yours!
www.petro-fs.com

1801 W. 13th Ave Suite 207
 Denver, CO 80204
 (303) 928-7128
 111 E. Third Street
 Rifle, CO 81650
 (970) 625-4740