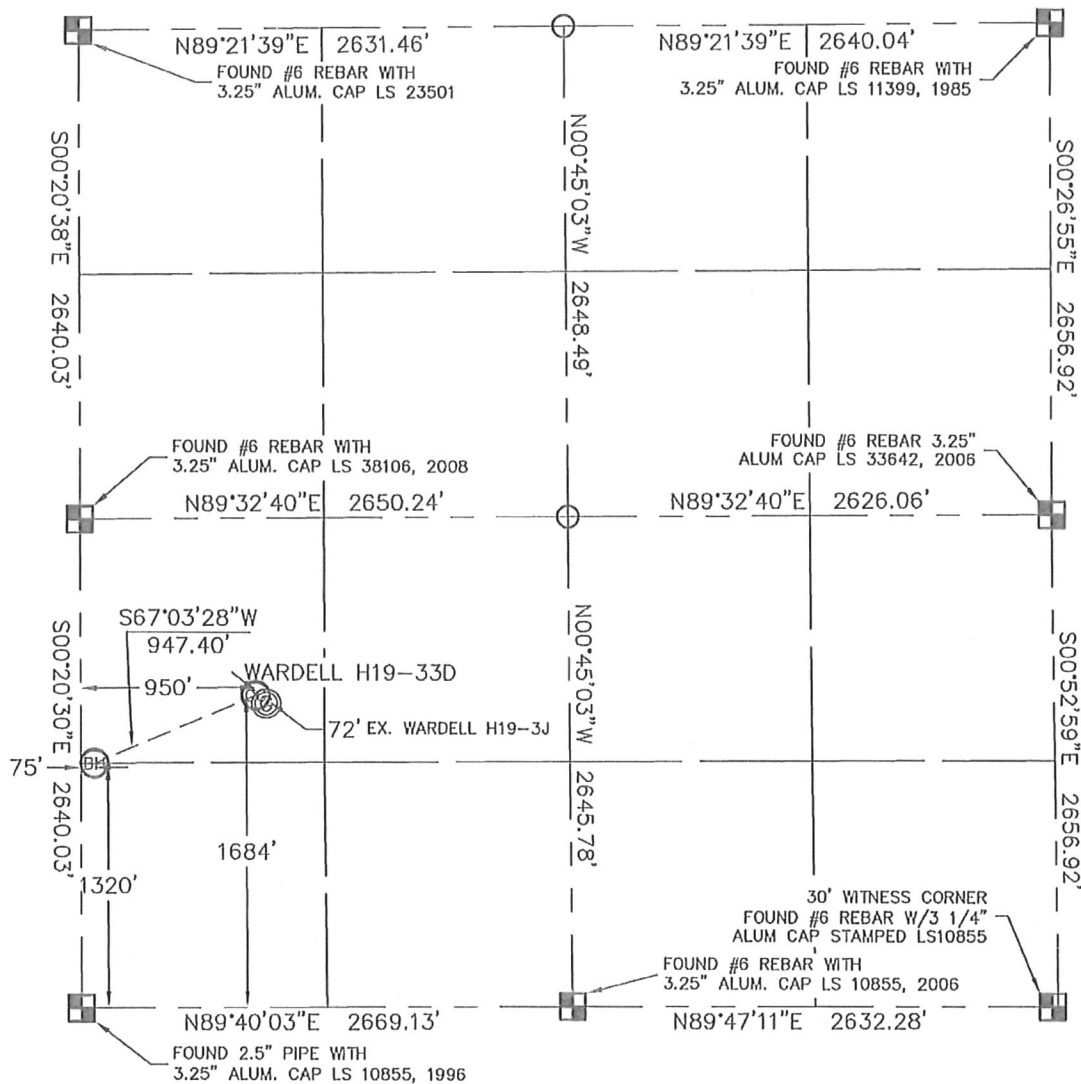


## WELL LOCATION CERTIFICATE

THIS MAP DOES NOT REPRESENT A BOUNDARY SURVEY

SECTION: 19  
TOWNSHIP: 3N  
RANGE: 65WIn accordance with a request from Erik Van Decor with Noble Energy Inc.King Surveyors Inc. has determined the surface location of the WARDELL H19-33D to be 1684' from the SOUTH line and 950' from the WEST line and the bottom hole to be 1320' from the SOUTH line and 75' from the WEST line as measured at right angles from the section lines of Section 19, Township 3 North, Range 65 West of the Sixth Principal Meridian, County of Weld, State of Colorado.I hereby state that this Well Location Certificate was prepared by me, or under my direct supervision, that the fieldwork was completed on 11-19-09, for and on behalf of Noble Energy Inc. That this is not a Land Survey Plat or an Improvement Survey Plat, and that it is not to be relied upon for establishment of fence, building, or other future improvement lines.

## NOTE:

- 1) Bearings shown are Grid Bearings of the Colorado State Plane Coordinate System, North Zone, North American Datum 1983/2007. The lineal dimensions as contained herein are based upon the "U.S. Survey Foot."
- 2) Ground elevations are based on an observed GPS elevation (NAVD 1988 DATUM).
- 3) NEAREST EXISTING WELL: WARDELL H19-3J 72' SOUTHEAST
- 4) IMPROVEMENTS: See VISIBLE IMPROVEMENTS exhibit for all visible improvements within 400' of well head.
- 5) SURFACE USE: PASTURE, EX. WELL SITE

SURFACE LOCATION  
LATITUDE: 40.20828°N  
LONGITUDE: 104.71234°W  
PDOP: 1.5  
ELEV: 4990  
1/4, 1/4: NW1/4SW1/4  
NEAREST PROPERTY LINE: 950' WEST

BOTTOM HOLE  
LATITUDE: 40.20729°N  
LONGITUDE: 104.71547°W

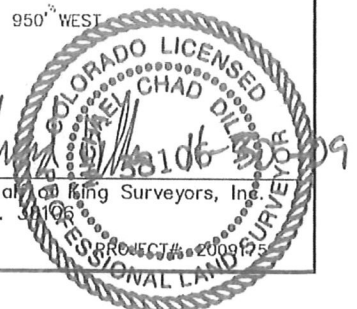
## NOTE

According to Colorado law, you must commence any legal action based upon any defect in this W.L.C. within three years after you discover such defect. In no event, may any action based upon any defect in this survey be commenced more than ten years after the date of the certificate shown hereon. (13-80-105 C.R.S.)

## LEGEND

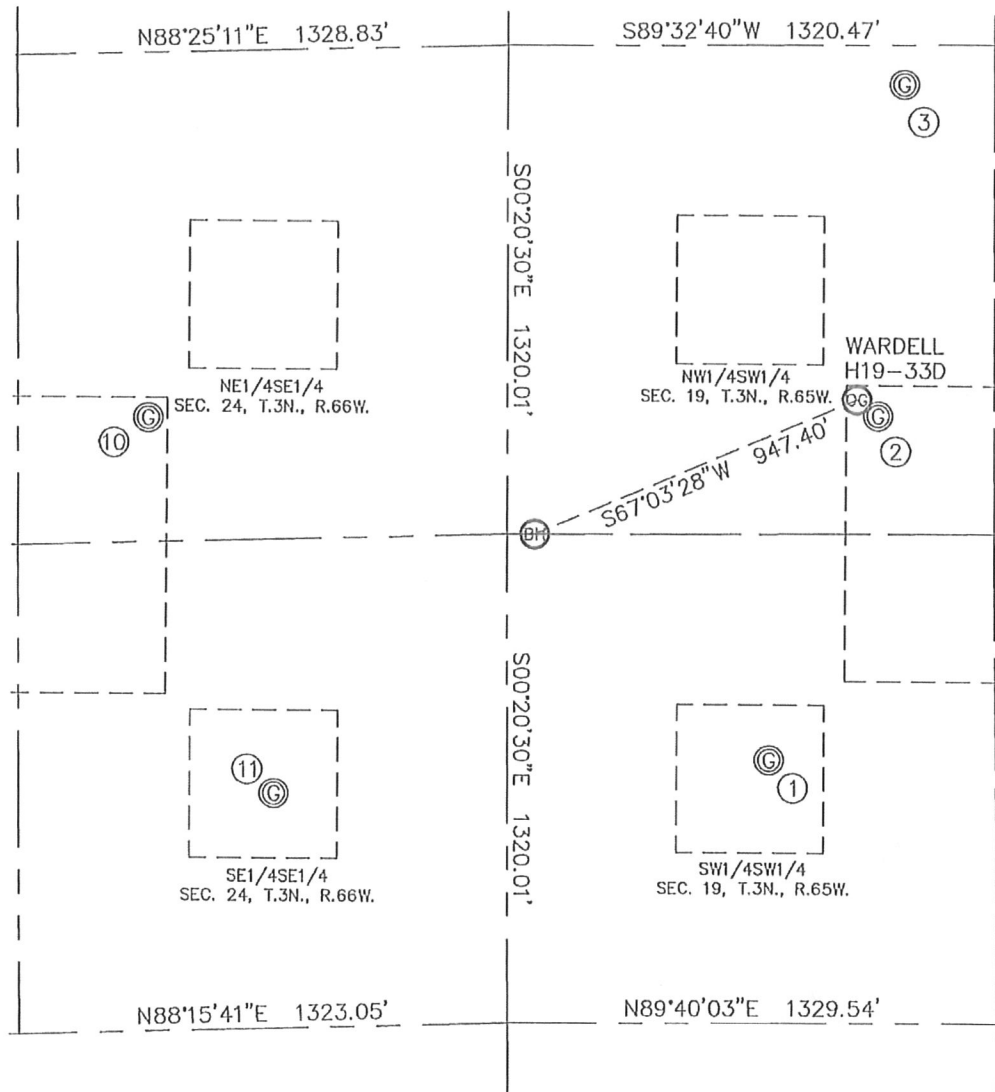
- = ALIQUOT MONUMENT AS DESCRIBED  
○ = CALCULATED POSITION

Michael Chad Dilka—On behalf of King Surveyors, Inc.  
Licensed Land Surveyor No. 3109  
State of Colorado



# SITE SKETCH

SECTION: 19  
TOWNSHIP: 3N  
RANGE: 65W



- |  |  |  |  |   |
|--|--|--|--|---|
| ①<br>WARDELL H19-13<br>SW1/4SW1/4<br>710' FSL<br>711' FWL<br>LAT-40.20561°N<br>LONG-104.71321°W<br>PDOP: 1.1<br>ELEV: 4995 | ②<br>WARDELL H19-3J<br>NW1/4SW1/4<br>1640' FSL<br>1007' FWL<br>LAT-40.20816°N<br>LONG-104.71214°W<br>PDOP: 1.7<br>ELEV: 4990 | ③<br>WARDELL H19-20<br>NW1/4SW1/4<br>2535' FSL<br>1078' FWL<br>LAT-40.21062°N<br>LONG-104.71187°W<br>PDOP: 1.5<br>ELEV: 4984 | ⑩<br>HSR-LONNY JOSEPH 9-24<br>NE1/4SE1/4<br>1657' FSL<br>974' FEL<br>LAT-40.20816°N<br>LONG-104.71922°W<br>PDOP: 1.5<br>ELEV: 5029 | ⑪<br>HSR-SCHNEIDER 16-24<br>SE1/4SE1/4<br>634' FSL<br>636' FEL<br>LAT-40.20537°N<br>LONG-104.71803°W<br>PDOP: 1.5<br>ELEV: 5015 |
|--|--|--|--|---|

