

7 of 2

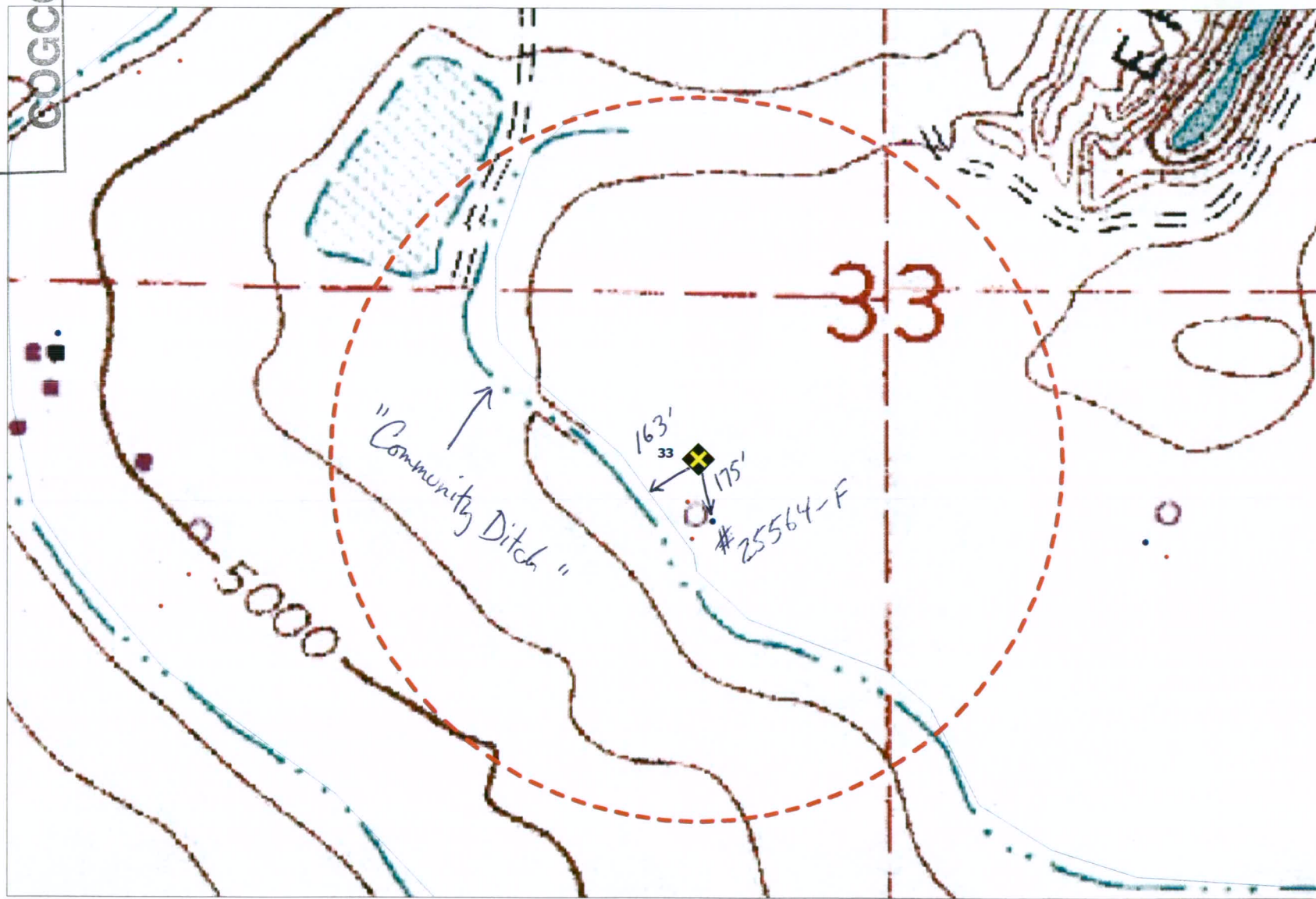
Oskarson NESW Multi-Well Pad 4-4-33 Hydro Map Sec. 33 2N-68W

RECEIVED

MAR 01 2010

COGCC

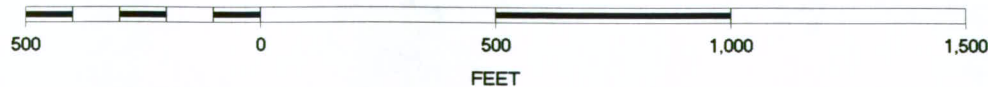
- OIL AND GAS WELLS
 - Oil and Gas Wells
 - Temporary Point
 - Buffer layer
- CITIES TOWNS PLACES
 - Towns and Places
- ROADS AND RRS
 - Major Highways
- WATER RESOURCES
 - Water Wells
 - Streams
- SAN JUAN BASIN
 - Fruitland PC
- TOPOS (1: 24K)
 - NE Colorado Topo



Hydrology map

24: 209685d

SCALE 1 : 4,996



MAR 01 2010


**ROCKY MOUNTAIN
ENERGY**
WELL DATA SUMMARY
RECEIVED
DEC 30 1982

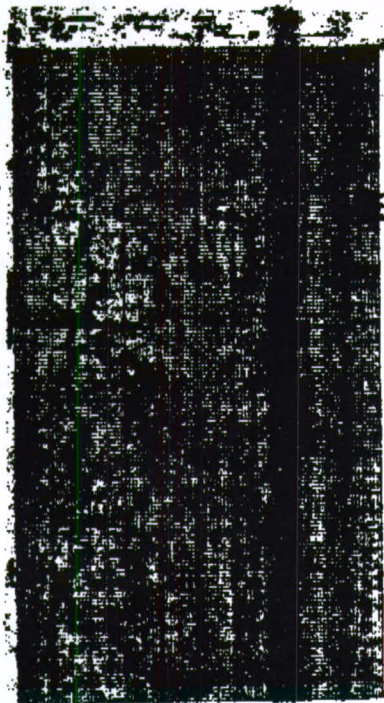
PROJECT ERIE 25564-F WELL NO. EMW-3
 LOCATION: SEC. 33 , T. 2 N , R. 68 W SURFACE ELEV. 5022.8
 DATE LOGGED 11-13-80 WELL DEPTH 160'
 WATER BEARING UNIT LARAMIE-FOX HILLS S.S. STATIC WATER LEVEL 52'
 (IN FEET BELOW GROUND SURFACE)

GEOPHYSICAL LOG

LITHOLOGY

DEPTH (FT.)

WELL CONSTRUCTION



C-SANDSTONE

C-COAL

A-COAL

LARAMIE-FOX HILLS
SANDSTONE

SANDSTONE



SILTSTONE

SAND/GRAVEL
PACK

SHALE



COAL



BENTONITE SEAL

5' SURFACE
CEMENT PLUGSTATIC WATER
LEVEL