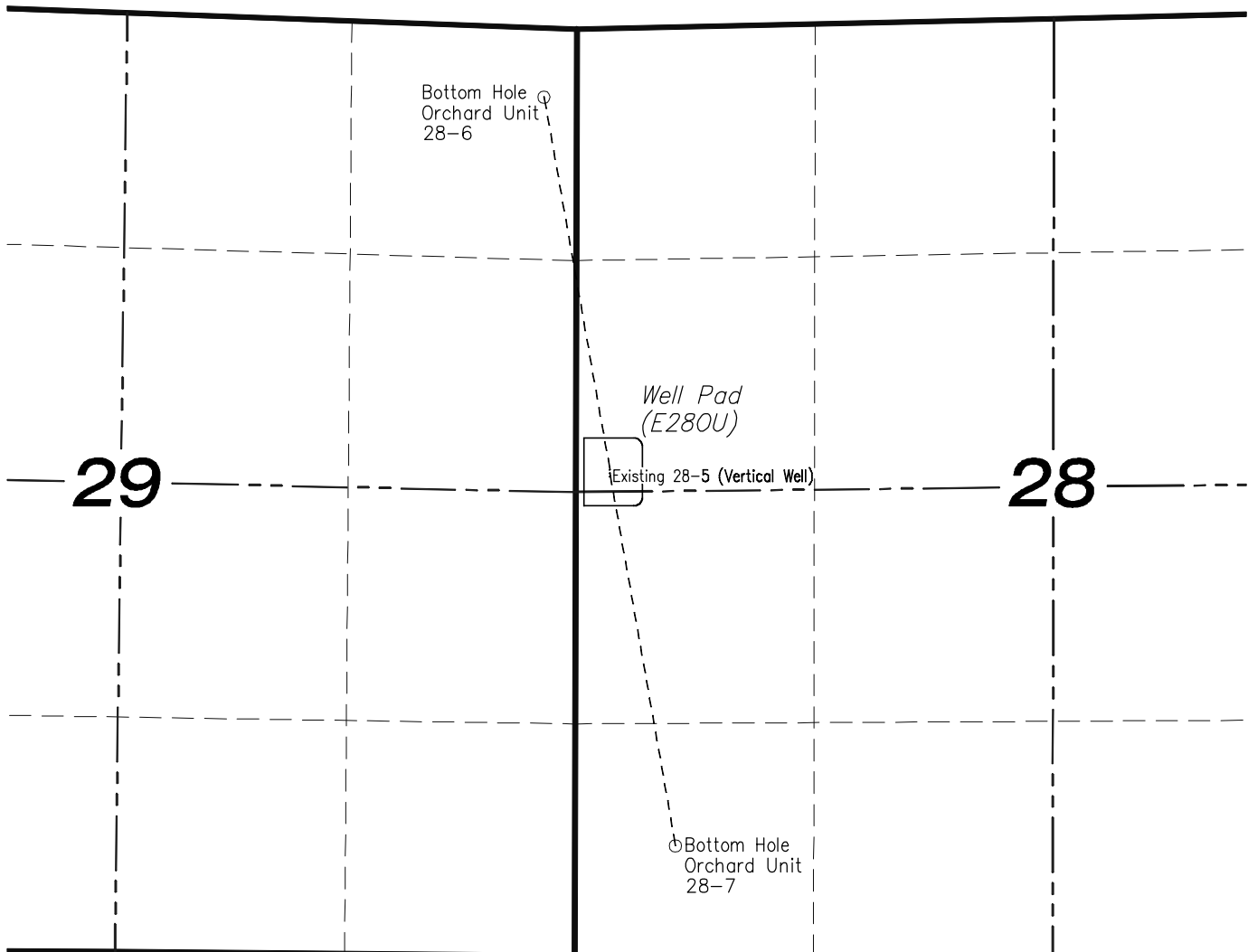
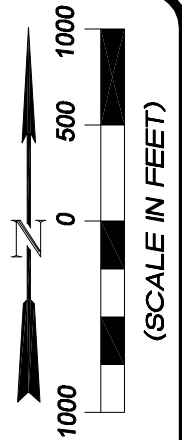


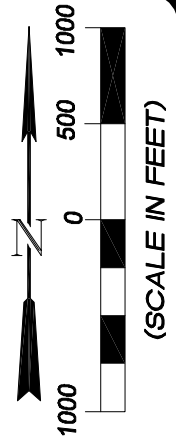
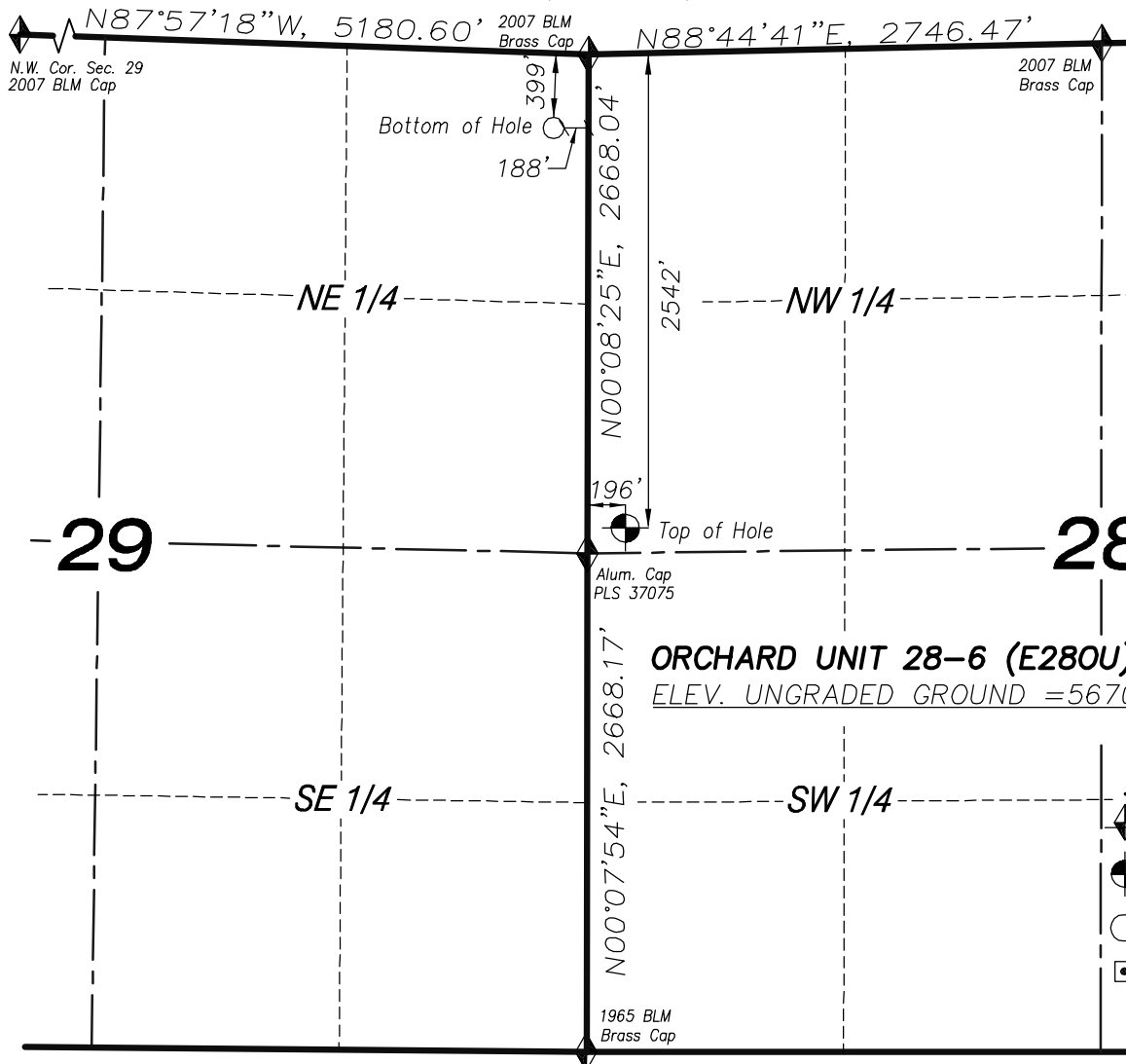
SECTIONS 28 & 29
T8S, R96W, 6th P.M.
EnCana Oil & Gas (USA) Inc.
Well Pad (E28OU)
SECTION DRILLING MAP



906 Main Street
 Evanston, Wyoming 82930
 Phone No. (307) 789-4545

		Scale: 1" = 1000'	SHEET 1 OF 10
Project No.	09-04-22	Date Surveyed: 4/07/09	
Date Drawn:	1/07/10	Latest Revision Date:	

T8S, R96W, 6th P.M.



ORCHARD UNIT 28-6 (E28OU) WELL:
ELEV. UNGRADED GROUND = 5670.6'

LEGEND

- ◆ SECTION CORNER LOCATED
- SURFACE LOCATION
- BOTTOM HOLE LOCATION
- RECORD LOCATION OF CORNER

ORCHARD UNIT 28-6 WELL (E28OU)
 (WELLHEAD LOCATION) NAD 83
 LATITUDE = 39.32082° N
 LONGITUDE = 108.12221° W
 (BOTTOM HOLE LOCATION) NAD 83
 LATITUDE = 39.32671° N
 LONGITUDE = 108.12358° W

CERTIFICATE OF SURVEYOR

I, TED TAGGART OF FRUITA, COLORADO HEREBY CERTIFY THAT THIS MAP WAS MADE FROM NOTES TAKEN DURING AN ACTUAL SURVEY MADE BY ME OR UNDER MY DIRECTION FOR ENCANA OIL & GAS (USA) INC. AND THAT THIS LOCATION HAS BEEN STAKED ON THE GROUND AS SHOWN HEREON.



906 Main Street
 Evanston, Wyoming 82930
 Phone No. (307) 789-4545

NOTES

1. WELL FOOTAGES ARE MEASURED AT RIGHT ANGLES TO SECTION LINES.
2. BASIS OF BEARING: GEODETIC- BASED ON GPS OBSERVATIONS.
3. ELEVATIONS BASED ON GPS OBSERVATIONS, NAVD 88 (GEOID 03), POST PROCESSED USING NGS OPUS.
4. THE BOTTOM HOLE BEARS N10°00'00"W, 2179' FROM TOP OF HOLE.
5. SEE ADDENDUM TO LEGAL PLAT (SHEET 1C) FOR VISIBLE IMPROVEMENTS WITHIN 400 FEET OF THE PROPOSED OIL & GAS LOCATION.
6. CONTROL FOR SURVEY WAS ESTABLISHED USING DIFFERENTIALLY CORRECTED GPS FROM AN OPUS BASED CONTROL NETWORK. WELL LOCATION WAS ESTABLISHED USING NON-GPS CONVENTIONAL METHODS, THEREFORE NO PDOP READING WAS TAKEN.

MAP to ACCOMPANY

APPLICATION for PERMIT to DRILL
EnCana Oil & Gas (USA) Inc.
Orchard Unit 28-6 (E28OU) Well

SW1/4 NW1/4, SECTION 28

T8S, R96W, 6th P.M.

MESA COUNTY, COLORADO

Location Plat		Scale: 1" = 1000'	SHEET 1a OF 10
Project No.	09-04-22	Date Surveyed: 4/07/09	
Date Drawn:	1/07/10	Latest Revision Date:	