

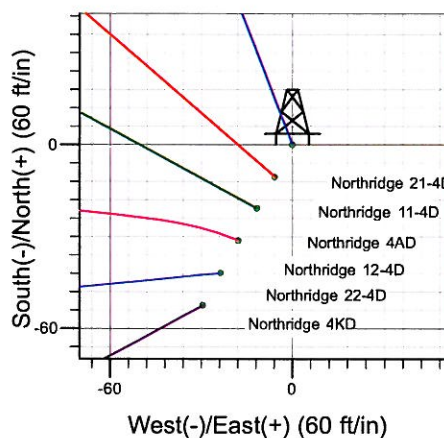
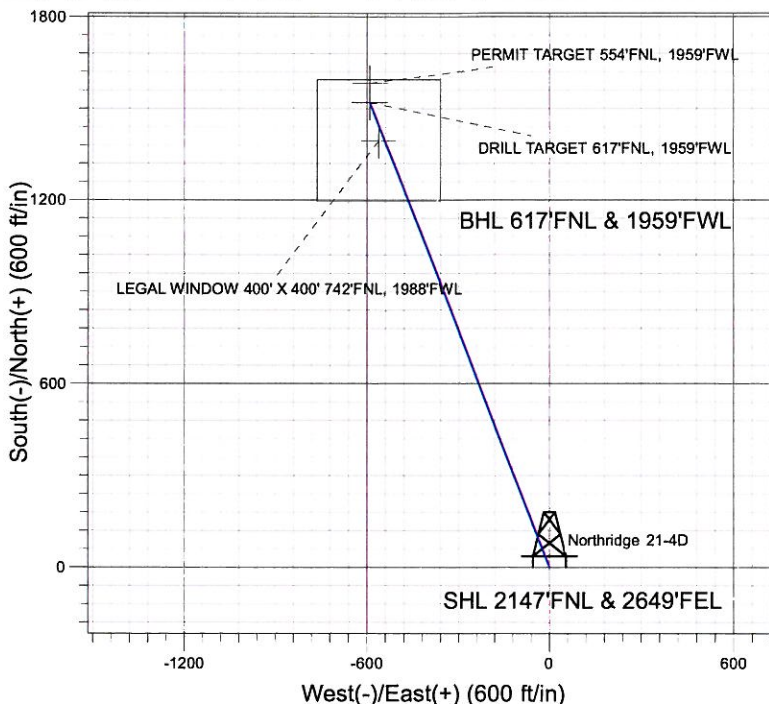
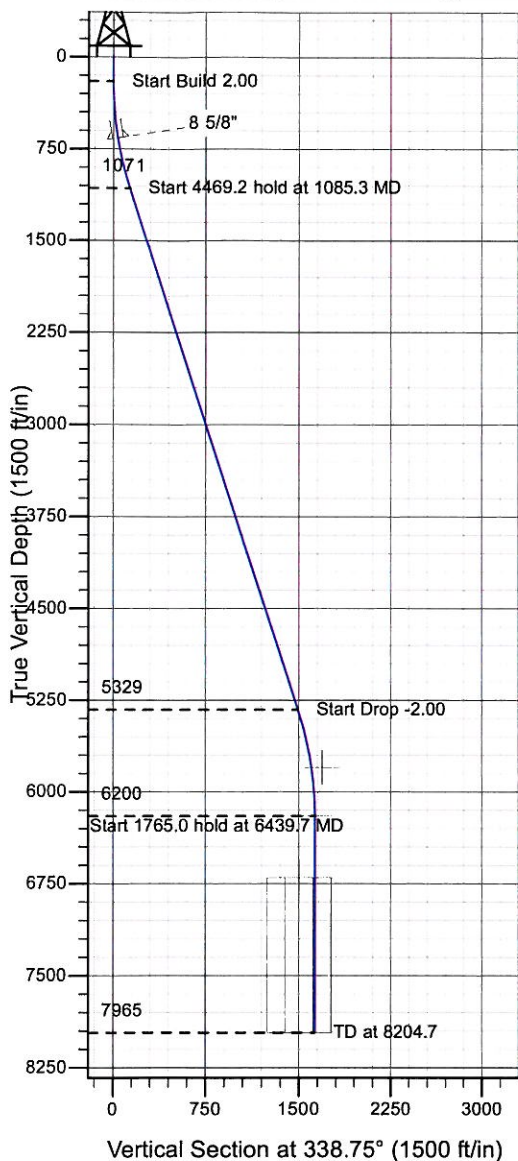
ENSIGN

Directional

Well Name: Northridge 21-4D

Surface Location: Northridge Pad Sec.4-T5N-R66W
 North American Datum 1983 , US State Plane 1983 , Colorado Northern Zone
 Ground Elevation: 4740.0
 +N/-S+E/-W Northing Easting Latitude Longitude Slot
 0.0 0.0 1400836.63 3199474.24 40° 25' 53.349 N 104° 47' 0.388 W
 Original Well Elev WELL @ 4753.0ft (Original Well Elev)

Synergy Resources



Northridge Pad Sec.4-T5N-R66W
 Northridge 21-4D
 Plan #3 (1-12-10)
 16:35, January 13 2010



Azimuths to True North
 Magnetic North: 9.04°
 Magnetic Field
 Strength: 53319.3snT
 Dip Angle: 67.13°
 Date: 12/31/2009
 Model: IGRF200510

WELLBORE TARGET DETAILS (LAT/LONG)

Name	TVD	+N/-S	+E/-W	Latitude	Longitude	Shape
PERMIT TARGET 554'FNL, 1959'FWL	5800.0	1582.7	-591.1	40° 26' 8.989 N	104° 47' 8.032 W	Point
DRILL TARGET 617'FNL, 1959'FWL	6200.0	1519.7	-591.1	40° 26' 8.366 N	104° 47' 8.032 W	Point
LEGAL WINDOW 400' X 400' 742'FNL, 1988'FWL	6700.0	1394.7	-562.1	40° 26' 7.131 N	104° 47' 7.657 W	Rectangle (Sides: L400.0 W400.0)

SECTION DETAILS

Sec	MD	Inc	Azi	TVD	+N/-S	+E/-W	DLeg	TFace	VSec	Target
1	0.0	0.00	0.00	0.0	0.0	0.0	0.00	0.00	0.0	
2	200.0	0.00	0.00	200.0	0.0	0.0	0.00	0.00	0.0	
3	1085.3	17.71	338.75	1071.3	126.5	-49.2	2.00	338.75	135.7	
4	5554.5	17.71	338.75	5328.7	1393.2	-541.9	0.00	0.00	1494.9	
5	6439.7	0.00	0.00	6200.0	1519.7	-591.1	2.00	180.00	1630.6	DRILL TARGET 617'FNL, 1959'FWL
6	8204.7	0.00	0.00	7965.0	1519.7	-591.1	0.00	0.00	1630.6	



Directional

Synergy Resources

SEC.4-T5N-R66W

Northridge Pad Sec.4-T5N-R66W

Northridge 21-4D

Wellbore #1

Plan: Plan #3 (1-12-10)

Standard Planning Report

13 January, 2010

Database:	EDM den0-adp01 Server Data	Local Co-ordinate Reference:	Well Northridge 21-4D
Company:	Synergy Resources	TVD Reference:	WELL @ 4753.0ft (Original Well Elev)
Project:	SEC.4-T5N-R66W	MD Reference:	WELL @ 4753.0ft (Original Well Elev)
Site:	Northridge Pad Sec.4-T5N-R66W	North Reference:	True
Well:	Northridge 21-4D	Survey Calculation Method:	Minimum Curvature
Wellbore:	Wellbore #1		
Design:	Plan #3 (1-12-10)		

Project	SEC.4-T5N-R66W, Weld County, Colorado		
Map System:	US State Plane 1983	System Datum:	Mean Sea Level
Geo Datum:	North American Datum 1983		Using Well Reference Point
Map Zone:	Colorado Northern Zone		Using geodetic scale factor

Site		Northridge Pad Sec.4-T5N-R66W			
Site Position:		Northing:	1,400,867.38 ft	Latitude:	40° 25' 53.652 N
From:	Lat/Long	Easting:	3,199,490.98 ft	Longitude:	104° 47' 0.168 W
Position Uncertainty:	0.0 ft	Slot Radius:	"	Grid Convergence:	0.46 °

Well	Northridge 21-4D					
Well Position	+N/-S	-30.6 ft	Northing:	1,400,836.63 ft	Latitude:	40° 25' 53.349 N
	+E/-W	-17.0 ft	Easting:	3,199,474.24 ft	Longitude:	104° 47' 0.388 W
Position Uncertainty		0.0 ft	Wellhead Elevation:	ft	Ground Level:	4,740.0 ft

Wellbore	Wellbore #1				
Magnetics	Model Name	Sample Date	Declination (°)	Dip Angle (°)	Field Strength (nT)
	IGRF200510	9/26/2008	9.21	67.17	53,450
	IGRF200510	12/31/2009	9.04	67.13	53,319

Design	Plan #3 (1-12-10)			
Audit Notes:				
Version:	Phase:	PROTOTYPE	Tie On Depth:	0.0
Vertical Section:	Depth From (TVD) (ft)	+N/-S (ft)	+E/-W (ft)	Direction (°)
	0.0	0.0	0.0	338.75

Plan Sections										
Measured Depth (ft)	Inclination (°)	Azimuth (°)	Vertical Depth (ft)	+N/-S (ft)	+E/-W (ft)	Dogleg Rate (°/100ft)	Build Rate (°/100ft)	Turn Rate (°/100ft)	TFO (°)	Target
0.0	0.00	0.00	0.0	0.0	0.0	0.00	0.00	0.00	0.00	
200.0	0.00	0.00	200.0	0.0	0.0	0.00	0.00	0.00	0.00	
1,085.3	17.71	338.75	1,071.3	126.5	-49.2	2.00	2.00	0.00	338.75	
5,554.5	17.71	338.75	5,328.7	1,393.2	-541.9	0.00	0.00	0.00	0.00	
6,439.7	0.00	0.00	6,200.0	1,519.7	-591.1	2.00	-2.00	0.00	180.00	DRILL TARGET 61
8,204.7	0.00	0.00	7,965.0	1,519.7	-591.1	0.00	0.00	0.00	0.00	

Database:	EDM den0-adp01 Server Data	Local Co-ordinate Reference:	Well Northridge 21-4D
Company:	Synergy Resources	TVD Reference:	WELL @ 4753.0ft (Original Well Elev)
Project:	SEC.4-T5N-R66W	MD Reference:	WELL @ 4753.0ft (Original Well Elev)
Site:	Northridge Pad Sec.4-T5N-R66W	North Reference:	True
Well:	Northridge 21-4D	Survey Calculation Method:	Minimum Curvature
Wellbore:	Wellbore #1		
Design:	Plan #3 (1-12-10)		

Planned Survey									
Measured Depth (ft)	Inclination (°)	Azimuth (°)	Vertical Depth (ft)	+N/-S (ft)	+E/-W (ft)	Vertical Section (ft)	Dogleg Rate (°/100ft)	Build Rate (°/100ft)	Turn Rate (°/100ft)
0.0	0.00	0.00	0.0	0.0	0.0	0.0	0.00	0.00	0.00
40.0	0.00	0.00	40.0	0.0	0.0	0.0	0.00	0.00	0.00
80.0	0.00	0.00	80.0	0.0	0.0	0.0	0.00	0.00	0.00
120.0	0.00	0.00	120.0	0.0	0.0	0.0	0.00	0.00	0.00
160.0	0.00	0.00	160.0	0.0	0.0	0.0	0.00	0.00	0.00
200.0	0.00	0.00	200.0	0.0	0.0	0.0	0.00	0.00	0.00
240.0	0.80	338.75	240.0	0.3	-0.1	0.3	2.00	2.00	0.00
280.0	1.60	338.75	280.0	1.0	-0.4	1.1	2.00	2.00	0.00
320.0	2.40	338.75	320.0	2.3	-0.9	2.5	2.00	2.00	0.00
360.0	3.20	338.75	359.9	4.2	-1.6	4.5	2.00	2.00	0.00
400.0	4.00	338.75	399.8	6.5	-2.5	7.0	2.00	2.00	0.00
440.0	4.80	338.75	439.7	9.4	-3.6	10.0	2.00	2.00	0.00
480.0	5.60	338.75	479.6	12.7	-5.0	13.7	2.00	2.00	0.00
520.0	6.40	338.75	519.3	16.6	-6.5	17.9	2.00	2.00	0.00
560.0	7.20	338.75	559.1	21.1	-8.2	22.6	2.00	2.00	0.00
600.0	8.00	338.75	598.7	26.0	-10.1	27.9	2.00	2.00	0.00
640.0	8.80	338.75	638.3	31.4	-12.2	33.7	2.00	2.00	0.00
662.0	9.24	338.75	660.0	34.6	-13.5	37.2	2.00	2.00	0.00
8 5/8"									
680.0	9.60	338.75	677.8	37.4	-14.5	40.1	2.00	2.00	0.00
720.0	10.40	338.75	717.1	43.9	-17.1	47.1	2.00	2.00	0.00
760.0	11.20	338.75	756.4	50.8	-19.8	54.6	2.00	2.00	0.00
800.0	12.00	338.75	795.6	58.3	-22.7	62.6	2.00	2.00	0.00
840.0	12.80	338.75	834.7	66.3	-25.8	71.2	2.00	2.00	0.00
880.0	13.60	338.75	873.6	74.9	-29.1	80.3	2.00	2.00	0.00
920.0	14.40	338.75	912.4	83.9	-32.6	90.0	2.00	2.00	0.00
960.0	15.20	338.75	951.1	93.4	-36.3	100.2	2.00	2.00	0.00
1,000.0	16.00	338.75	989.6	103.4	-40.2	111.0	2.00	2.00	0.00
1,040.0	16.80	338.75	1,028.0	114.0	-44.3	122.3	2.00	2.00	0.00
1,080.0	17.60	338.75	1,066.2	125.0	-48.6	134.1	2.00	2.00	0.00
1,085.3	17.71	338.75	1,071.3	126.5	-49.2	135.7	2.00	2.00	0.00
1,120.0	17.71	338.75	1,104.3	136.3	-53.0	146.3	0.00	0.00	0.00
1,160.0	17.71	338.75	1,142.4	147.6	-57.4	158.4	0.00	0.00	0.00
1,200.0	17.71	338.75	1,180.5	159.0	-61.8	170.6	0.00	0.00	0.00
1,240.0	17.71	338.75	1,218.6	170.3	-66.2	182.8	0.00	0.00	0.00
1,280.0	17.71	338.75	1,256.8	181.7	-70.7	194.9	0.00	0.00	0.00
1,320.0	17.71	338.75	1,294.9	193.0	-75.1	207.1	0.00	0.00	0.00
1,360.0	17.71	338.75	1,333.0	204.3	-79.5	219.3	0.00	0.00	0.00
1,400.0	17.71	338.75	1,371.1	215.7	-83.9	231.4	0.00	0.00	0.00
1,440.0	17.71	338.75	1,409.2	227.0	-88.3	243.6	0.00	0.00	0.00
1,480.0	17.71	338.75	1,447.3	238.4	-92.7	255.7	0.00	0.00	0.00
1,520.0	17.71	338.75	1,485.4	249.7	-97.1	267.9	0.00	0.00	0.00
1,560.0	17.71	338.75	1,523.5	261.0	-101.5	280.1	0.00	0.00	0.00
1,600.0	17.71	338.75	1,561.6	272.4	-105.9	292.2	0.00	0.00	0.00
1,640.0	17.71	338.75	1,599.7	283.7	-110.3	304.4	0.00	0.00	0.00
1,680.0	17.71	338.75	1,637.8	295.0	-114.8	316.6	0.00	0.00	0.00
1,720.0	17.71	338.75	1,675.9	306.4	-119.2	328.7	0.00	0.00	0.00
1,760.0	17.71	338.75	1,714.0	317.7	-123.6	340.9	0.00	0.00	0.00
1,800.0	17.71	338.75	1,752.1	329.1	-128.0	353.1	0.00	0.00	0.00
1,840.0	17.71	338.75	1,790.2	340.4	-132.4	365.2	0.00	0.00	0.00
1,880.0	17.71	338.75	1,828.3	351.7	-136.8	377.4	0.00	0.00	0.00
1,920.0	17.71	338.75	1,866.4	363.1	-141.2	389.6	0.00	0.00	0.00
1,960.0	17.71	338.75	1,904.5	374.4	-145.6	401.7	0.00	0.00	0.00
2,000.0	17.71	338.75	1,942.6	385.7	-150.0	413.9	0.00	0.00	0.00

Database:	EDM den0-adp01 Server Data	Local Co-ordinate Reference:	Well Northridge 21-4D
Company:	Synergy Resources	TVD Reference:	WELL @ 4753.0ft (Original Well Elev)
Project:	SEC.4-T5N-R66W	MD Reference:	WELL @ 4753.0ft (Original Well Elev)
Site:	Northridge Pad Sec.4-T5N-R66W	North Reference:	True
Well:	Northridge 21-4D	Survey Calculation Method:	Minimum Curvature
Wellbore:	Wellbore #1		
Design:	Plan #3 (1-12-10)		

Planned Survey									
Measured Depth (ft)	Inclination (°)	Azimuth (°)	Vertical Depth (ft)	+N/-S (ft)	+E/-W (ft)	Vertical Section (ft)	Dogleg Rate (°/100ft)	Build Rate (°/100ft)	Turn Rate (°/100ft)
2,040.0	17.71	338.75	1,980.8	397.1	-154.4	426.1	0.00	0.00	0.00
2,080.0	17.71	338.75	2,018.9	408.4	-158.9	438.2	0.00	0.00	0.00
2,120.0	17.71	338.75	2,057.0	419.8	-163.3	450.4	0.00	0.00	0.00
2,160.0	17.71	338.75	2,095.1	431.1	-167.7	462.6	0.00	0.00	0.00
2,200.0	17.71	338.75	2,133.2	442.4	-172.1	474.7	0.00	0.00	0.00
2,240.0	17.71	338.75	2,171.3	453.8	-176.5	486.9	0.00	0.00	0.00
2,280.0	17.71	338.75	2,209.4	465.1	-180.9	499.0	0.00	0.00	0.00
2,320.0	17.71	338.75	2,247.5	476.4	-185.3	511.2	0.00	0.00	0.00
2,360.0	17.71	338.75	2,285.6	487.8	-189.7	523.4	0.00	0.00	0.00
2,400.0	17.71	338.75	2,323.7	499.1	-194.1	535.5	0.00	0.00	0.00
2,440.0	17.71	338.75	2,361.8	510.5	-198.5	547.7	0.00	0.00	0.00
2,480.0	17.71	338.75	2,399.9	521.8	-203.0	559.9	0.00	0.00	0.00
2,520.0	17.71	338.75	2,438.0	533.1	-207.4	572.0	0.00	0.00	0.00
2,560.0	17.71	338.75	2,476.1	544.5	-211.8	584.2	0.00	0.00	0.00
2,600.0	17.71	338.75	2,514.2	555.8	-216.2	596.4	0.00	0.00	0.00
2,640.0	17.71	338.75	2,552.3	567.1	-220.6	608.5	0.00	0.00	0.00
2,680.0	17.71	338.75	2,590.4	578.5	-225.0	620.7	0.00	0.00	0.00
2,720.0	17.71	338.75	2,628.5	589.8	-229.4	632.9	0.00	0.00	0.00
2,760.0	17.71	338.75	2,666.6	601.2	-233.8	645.0	0.00	0.00	0.00
2,800.0	17.71	338.75	2,704.8	612.5	-238.2	657.2	0.00	0.00	0.00
2,840.0	17.71	338.75	2,742.9	623.8	-242.6	669.4	0.00	0.00	0.00
2,880.0	17.71	338.75	2,781.0	635.2	-247.1	681.5	0.00	0.00	0.00
2,920.0	17.71	338.75	2,819.1	646.5	-251.5	693.7	0.00	0.00	0.00
2,960.0	17.71	338.75	2,857.2	657.8	-255.9	705.9	0.00	0.00	0.00
3,000.0	17.71	338.75	2,895.3	669.2	-260.3	718.0	0.00	0.00	0.00
3,040.0	17.71	338.75	2,933.4	680.5	-264.7	730.2	0.00	0.00	0.00
3,080.0	17.71	338.75	2,971.5	691.9	-269.1	742.4	0.00	0.00	0.00
3,120.0	17.71	338.75	3,009.6	703.2	-273.5	754.5	0.00	0.00	0.00
3,160.0	17.71	338.75	3,047.7	714.5	-277.9	766.7	0.00	0.00	0.00
3,200.0	17.71	338.75	3,085.8	725.9	-282.3	778.8	0.00	0.00	0.00
3,240.0	17.71	338.75	3,123.9	737.2	-286.7	791.0	0.00	0.00	0.00
3,280.0	17.71	338.75	3,162.0	748.5	-291.2	803.2	0.00	0.00	0.00
3,320.0	17.71	338.75	3,200.1	759.9	-295.6	815.3	0.00	0.00	0.00
3,360.0	17.71	338.75	3,238.2	771.2	-300.0	827.5	0.00	0.00	0.00
3,400.0	17.71	338.75	3,276.3	782.6	-304.4	839.7	0.00	0.00	0.00
3,440.0	17.71	338.75	3,314.4	793.9	-308.8	851.8	0.00	0.00	0.00
3,480.0	17.71	338.75	3,352.5	805.2	-313.2	864.0	0.00	0.00	0.00
3,520.0	17.71	338.75	3,390.6	816.6	-317.6	876.2	0.00	0.00	0.00
3,560.0	17.71	338.75	3,428.8	827.9	-322.0	888.3	0.00	0.00	0.00
3,600.0	17.71	338.75	3,466.9	839.2	-326.4	900.5	0.00	0.00	0.00
3,640.0	17.71	338.75	3,505.0	850.6	-330.8	912.7	0.00	0.00	0.00
3,680.0	17.71	338.75	3,543.1	861.9	-335.3	924.8	0.00	0.00	0.00
3,720.0	17.71	338.75	3,581.2	873.3	-339.7	937.0	0.00	0.00	0.00
3,760.0	17.71	338.75	3,619.3	884.6	-344.1	949.2	0.00	0.00	0.00
3,800.0	17.71	338.75	3,657.4	895.9	-348.5	961.3	0.00	0.00	0.00
3,840.0	17.71	338.75	3,695.5	907.3	-352.9	973.5	0.00	0.00	0.00
3,880.0	17.71	338.75	3,733.6	918.6	-357.3	985.7	0.00	0.00	0.00
3,920.0	17.71	338.75	3,771.7	930.0	-361.7	997.8	0.00	0.00	0.00
3,960.0	17.71	338.75	3,809.8	941.3	-366.1	1,010.0	0.00	0.00	0.00
4,000.0	17.71	338.75	3,847.9	952.6	-370.5	1,022.2	0.00	0.00	0.00
4,040.0	17.71	338.75	3,886.0	964.0	-374.9	1,034.3	0.00	0.00	0.00
4,080.0	17.71	338.75	3,924.1	975.3	-379.4	1,046.5	0.00	0.00	0.00
4,120.0	17.71	338.75	3,962.2	986.6	-383.8	1,058.6	0.00	0.00	0.00
4,160.0	17.71	338.75	4,000.3	998.0	-388.2	1,070.8	0.00	0.00	0.00

Database:	EDM den0-adp01 Server Data	Local Co-ordinate Reference:	Well Northridge 21-4D
Company:	Synergy Resources	TVD Reference:	WELL @ 4753.0ft (Original Well Elev)
Project:	SEC.4-T5N-R66W	MD Reference:	WELL @ 4753.0ft (Original Well Elev)
Site:	Northridge Pad Sec.4-T5N-R66W	North Reference:	True
Well:	Northridge 21-4D	Survey Calculation Method:	Minimum Curvature
Wellbore:	Wellbore #1		
Design:	Plan #3 (1-12-10)		

Planned Survey

Measured Depth (ft)	Inclination (°)	Azimuth (°)	Vertical Depth (ft)	+N/-S (ft)	+E/-W (ft)	Vertical Section (ft)	Dogleg Rate (°/100ft)	Build Rate (°/100ft)	Turn Rate (°/100ft)
4,200.0	17.71	338.75	4,038.4	1,009.3	-392.6	1,083.0	0.00	0.00	0.00
4,240.0	17.71	338.75	4,076.5	1,020.7	-397.0	1,095.1	0.00	0.00	0.00
4,280.0	17.71	338.75	4,114.6	1,032.0	-401.4	1,107.3	0.00	0.00	0.00
4,320.0	17.71	338.75	4,152.8	1,043.3	-405.8	1,119.5	0.00	0.00	0.00
4,360.0	17.71	338.75	4,190.9	1,054.7	-410.2	1,131.6	0.00	0.00	0.00
4,400.0	17.71	338.75	4,229.0	1,066.0	-414.6	1,143.8	0.00	0.00	0.00
4,440.0	17.71	338.75	4,267.1	1,077.3	-419.0	1,156.0	0.00	0.00	0.00
4,480.0	17.71	338.75	4,305.2	1,088.7	-423.5	1,168.1	0.00	0.00	0.00
4,520.0	17.71	338.75	4,343.3	1,100.0	-427.9	1,180.3	0.00	0.00	0.00
4,560.0	17.71	338.75	4,381.4	1,111.4	-432.3	1,192.5	0.00	0.00	0.00
4,600.0	17.71	338.75	4,419.5	1,122.7	-436.7	1,204.6	0.00	0.00	0.00
4,640.0	17.71	338.75	4,457.6	1,134.0	-441.1	1,216.8	0.00	0.00	0.00
4,680.0	17.71	338.75	4,495.7	1,145.4	-445.5	1,229.0	0.00	0.00	0.00
4,720.0	17.71	338.75	4,533.8	1,156.7	-449.9	1,241.1	0.00	0.00	0.00
4,760.0	17.71	338.75	4,571.9	1,168.0	-454.3	1,253.3	0.00	0.00	0.00
4,800.0	17.71	338.75	4,610.0	1,179.4	-458.7	1,265.5	0.00	0.00	0.00
4,840.0	17.71	338.75	4,648.1	1,190.7	-463.1	1,277.6	0.00	0.00	0.00
4,880.0	17.71	338.75	4,686.2	1,202.1	-467.6	1,289.8	0.00	0.00	0.00
4,920.0	17.71	338.75	4,724.3	1,213.4	-472.0	1,301.9	0.00	0.00	0.00
4,960.0	17.71	338.75	4,762.4	1,224.7	-476.4	1,314.1	0.00	0.00	0.00
5,000.0	17.71	338.75	4,800.5	1,236.1	-480.8	1,326.3	0.00	0.00	0.00
5,040.0	17.71	338.75	4,838.6	1,247.4	-485.2	1,338.4	0.00	0.00	0.00
5,080.0	17.71	338.75	4,876.8	1,258.7	-489.6	1,350.6	0.00	0.00	0.00
5,120.0	17.71	338.75	4,914.9	1,270.1	-494.0	1,362.8	0.00	0.00	0.00
5,160.0	17.71	338.75	4,953.0	1,281.4	-498.4	1,374.9	0.00	0.00	0.00
5,200.0	17.71	338.75	4,991.1	1,292.8	-502.8	1,387.1	0.00	0.00	0.00
5,240.0	17.71	338.75	5,029.2	1,304.1	-507.2	1,399.3	0.00	0.00	0.00
5,280.0	17.71	338.75	5,067.3	1,315.4	-511.6	1,411.4	0.00	0.00	0.00
5,320.0	17.71	338.75	5,105.4	1,326.8	-516.1	1,423.6	0.00	0.00	0.00
5,360.0	17.71	338.75	5,143.5	1,338.1	-520.5	1,435.8	0.00	0.00	0.00
5,400.0	17.71	338.75	5,181.6	1,349.4	-524.9	1,447.9	0.00	0.00	0.00
5,440.0	17.71	338.75	5,219.7	1,360.8	-529.3	1,460.1	0.00	0.00	0.00
5,480.0	17.71	338.75	5,257.8	1,372.1	-533.7	1,472.3	0.00	0.00	0.00
5,520.0	17.71	338.75	5,295.9	1,383.5	-538.1	1,484.4	0.00	0.00	0.00
5,554.5	17.71	338.75	5,328.7	1,393.2	-541.9	1,494.9	0.00	0.00	0.00
5,560.0	17.59	338.75	5,334.0	1,394.8	-542.5	1,496.6	2.00	-2.00	0.00
5,600.0	16.79	338.75	5,372.2	1,405.8	-546.8	1,508.4	2.00	-2.00	0.00
5,640.0	15.99	338.75	5,410.6	1,416.3	-550.9	1,519.7	2.00	-2.00	0.00
5,680.0	15.19	338.75	5,449.1	1,426.4	-554.8	1,530.5	2.00	-2.00	0.00
5,720.0	14.39	338.75	5,487.8	1,435.9	-558.5	1,540.7	2.00	-2.00	0.00
5,760.0	13.59	338.75	5,526.6	1,444.9	-562.0	1,550.3	2.00	-2.00	0.00
5,800.0	12.79	338.75	5,565.6	1,453.4	-565.3	1,559.5	2.00	-2.00	0.00
5,840.0	11.99	338.75	5,604.6	1,461.4	-568.4	1,568.1	2.00	-2.00	0.00
5,880.0	11.19	338.75	5,643.8	1,468.9	-571.3	1,576.1	2.00	-2.00	0.00
5,920.0	10.39	338.75	5,683.1	1,475.9	-574.1	1,583.6	2.00	-2.00	0.00
5,960.0	9.59	338.75	5,722.5	1,482.3	-576.6	1,590.5	2.00	-2.00	0.00
6,000.0	8.79	338.75	5,762.0	1,488.3	-578.9	1,596.9	2.00	-2.00	0.00
6,040.0	7.99	338.75	5,801.5	1,493.7	-581.0	1,602.8	2.00	-2.00	0.00
6,049.9	7.80	338.75	5,811.4	1,495.0	-581.5	1,604.1	2.00	-2.00	0.00
PERMIT TARGET 554'FNL, 1959'FWL									
6,080.0	7.19	338.75	5,841.2	1,498.7	-582.9	1,608.1	2.00	-2.00	0.00
6,120.0	6.39	338.75	5,880.9	1,503.1	-584.6	1,612.8	2.00	-2.00	0.00
6,160.0	5.59	338.75	5,920.7	1,507.0	-586.2	1,617.0	2.00	-2.00	0.00
6,200.0	4.79	338.75	5,960.5	1,510.4	-587.5	1,620.6	2.00	-2.00	0.00

Database:	EDM den0-adp01 Server Data	Local Co-ordinate Reference:	Well Northridge 21-4D
Company:	Synergy Resources	TVD Reference:	WELL @ 4753.0ft (Original Well Elev)
Project:	SEC.4-T5N-R66W	MD Reference:	WELL @ 4753.0ft (Original Well Elev)
Site:	Northridge Pad Sec.4-T5N-R66W	North Reference:	True
Well:	Northridge 21-4D	Survey Calculation Method:	Minimum Curvature
Wellbore:	Wellbore #1		
Design:	Plan #3 (1-12-10)		

Planned Survey

Measured Depth (ft)	Inclination (°)	Azimuth (°)	Vertical Depth (ft)	+N/-S (ft)	+E/-W (ft)	Vertical Section (ft)	Dogleg Rate (°/100ft)	Build Rate (°/100ft)	Turn Rate (°/100ft)
6,240.0	3.99	338.75	6,000.4	1,513.2	-588.6	1,623.6	2.00	-2.00	0.00
6,280.0	3.19	338.75	6,040.3	1,515.6	-589.5	1,626.2	2.00	-2.00	0.00
6,320.0	2.39	338.75	6,080.3	1,517.4	-590.2	1,628.1	2.00	-2.00	0.00
6,360.0	1.59	338.75	6,120.3	1,518.7	-590.7	1,629.5	2.00	-2.00	0.00
6,400.0	0.79	338.75	6,160.3	1,519.4	-591.0	1,630.3	2.00	-2.00	0.00
6,439.7	0.00	0.00	6,200.0	1,519.7	-591.1	1,630.6	2.00	-2.00	0.00
DRILL TARGET 617'FNL, 1959'FWL									
6,440.0	0.00	0.00	6,200.3	1,519.7	-591.1	1,630.6	0.00	0.00	0.00
6,480.0	0.00	0.00	6,240.3	1,519.7	-591.1	1,630.6	0.00	0.00	0.00
6,520.0	0.00	0.00	6,280.3	1,519.7	-591.1	1,630.6	0.00	0.00	0.00
6,560.0	0.00	0.00	6,320.3	1,519.7	-591.1	1,630.6	0.00	0.00	0.00
6,600.0	0.00	0.00	6,360.3	1,519.7	-591.1	1,630.6	0.00	0.00	0.00
6,640.0	0.00	0.00	6,400.3	1,519.7	-591.1	1,630.6	0.00	0.00	0.00
6,680.0	0.00	0.00	6,440.3	1,519.7	-591.1	1,630.6	0.00	0.00	0.00
6,720.0	0.00	0.00	6,480.3	1,519.7	-591.1	1,630.6	0.00	0.00	0.00
6,760.0	0.00	0.00	6,520.3	1,519.7	-591.1	1,630.6	0.00	0.00	0.00
6,800.0	0.00	0.00	6,560.3	1,519.7	-591.1	1,630.6	0.00	0.00	0.00
6,840.0	0.00	0.00	6,600.3	1,519.7	-591.1	1,630.6	0.00	0.00	0.00
6,880.0	0.00	0.00	6,640.3	1,519.7	-591.1	1,630.6	0.00	0.00	0.00
6,920.0	0.00	0.00	6,680.3	1,519.7	-591.1	1,630.6	0.00	0.00	0.00
6,939.7	0.00	0.00	6,700.0	1,519.7	-591.1	1,630.6	0.00	0.00	0.00
LEGAL WINDOW 400' X 400' 742'FNL, 1988'FWL									
6,960.0	0.00	0.00	6,720.3	1,519.7	-591.1	1,630.6	0.00	0.00	0.00
7,000.0	0.00	0.00	6,760.3	1,519.7	-591.1	1,630.6	0.00	0.00	0.00
7,040.0	0.00	0.00	6,800.3	1,519.7	-591.1	1,630.6	0.00	0.00	0.00
7,080.0	0.00	0.00	6,840.3	1,519.7	-591.1	1,630.6	0.00	0.00	0.00
7,120.0	0.00	0.00	6,880.3	1,519.7	-591.1	1,630.6	0.00	0.00	0.00
7,160.0	0.00	0.00	6,920.3	1,519.7	-591.1	1,630.6	0.00	0.00	0.00
7,200.0	0.00	0.00	6,960.3	1,519.7	-591.1	1,630.6	0.00	0.00	0.00
7,240.0	0.00	0.00	7,000.3	1,519.7	-591.1	1,630.6	0.00	0.00	0.00
7,280.0	0.00	0.00	7,040.3	1,519.7	-591.1	1,630.6	0.00	0.00	0.00
7,320.0	0.00	0.00	7,080.3	1,519.7	-591.1	1,630.6	0.00	0.00	0.00
7,360.0	0.00	0.00	7,120.3	1,519.7	-591.1	1,630.6	0.00	0.00	0.00
7,400.0	0.00	0.00	7,160.3	1,519.7	-591.1	1,630.6	0.00	0.00	0.00
7,440.0	0.00	0.00	7,200.3	1,519.7	-591.1	1,630.6	0.00	0.00	0.00
7,480.0	0.00	0.00	7,240.3	1,519.7	-591.1	1,630.6	0.00	0.00	0.00
7,489.7	0.00	0.00	7,250.0	1,519.7	-591.1	1,630.6	0.00	0.00	0.00
CODELL									
7,520.0	0.00	0.00	7,280.3	1,519.7	-591.1	1,630.6	0.00	0.00	0.00
7,560.0	0.00	0.00	7,320.3	1,519.7	-591.1	1,630.6	0.00	0.00	0.00
7,600.0	0.00	0.00	7,360.3	1,519.7	-591.1	1,630.6	0.00	0.00	0.00
7,640.0	0.00	0.00	7,400.3	1,519.7	-591.1	1,630.6	0.00	0.00	0.00
7,680.0	0.00	0.00	7,440.3	1,519.7	-591.1	1,630.6	0.00	0.00	0.00
7,720.0	0.00	0.00	7,480.3	1,519.7	-591.1	1,630.6	0.00	0.00	0.00
7,760.0	0.00	0.00	7,520.3	1,519.7	-591.1	1,630.6	0.00	0.00	0.00
7,800.0	0.00	0.00	7,560.3	1,519.7	-591.1	1,630.6	0.00	0.00	0.00
7,840.0	0.00	0.00	7,600.3	1,519.7	-591.1	1,630.6	0.00	0.00	0.00
7,880.0	0.00	0.00	7,640.3	1,519.7	-591.1	1,630.6	0.00	0.00	0.00
7,920.0	0.00	0.00	7,680.3	1,519.7	-591.1	1,630.6	0.00	0.00	0.00
7,960.0	0.00	0.00	7,720.3	1,519.7	-591.1	1,630.6	0.00	0.00	0.00
8,000.0	0.00	0.00	7,760.3	1,519.7	-591.1	1,630.6	0.00	0.00	0.00
8,040.0	0.00	0.00	7,800.3	1,519.7	-591.1	1,630.6	0.00	0.00	0.00
8,080.0	0.00	0.00	7,840.3	1,519.7	-591.1	1,630.6	0.00	0.00	0.00

Database:	EDM den0-adp01 Server Data	Local Co-ordinate Reference:	Well Northridge 21-4D
Company:	Synergy Resources	TVD Reference:	WELL @ 4753.0ft (Original Well Elev)
Project:	SEC.4-T5N-R66W	MD Reference:	WELL @ 4753.0ft (Original Well Elev)
Site:	Northridge Pad Sec.4-T5N-R66W	North Reference:	True
Well:	Northridge 21-4D	Survey Calculation Method:	Minimum Curvature
Wellbore:	Wellbore #1		
Design:	Plan #3 (1-12-10)		

Planned Survey

Measured Depth (ft)	Inclination (°)	Azimuth (°)	Vertical Depth (ft)	+N/-S (ft)	+E/-W (ft)	Vertical Section (ft)	Dogleg Rate (°/100ft)	Build Rate (°/100ft)	Turn Rate (°/100ft)
8,120.0	0.00	0.00	7,880.3	1,519.7	-591.1	1,630.6	0.00	0.00	0.00
8,160.0	0.00	0.00	7,920.3	1,519.7	-591.1	1,630.6	0.00	0.00	0.00
8,200.0	0.00	0.00	7,960.3	1,519.7	-591.1	1,630.6	0.00	0.00	0.00
8,204.7	0.00	0.00	7,965.0	1,519.7	-591.1	1,630.6	0.00	0.00	0.00

Targets

Target Name - hit/miss target - Shape	Dip Angle (°)	Dip Dir. (°)	TVD (ft)	+N/-S (ft)	+E/-W (ft)	Northing (ft)	Easting (ft)	Latitude	Longitude
LEGAL WINDOW 40C - plan misses target center by 128.3ft at 6939.7ft MD (6700.0 TVD, 1519.7 N, -591.1 E) - Rectangle (sides W400.0 H400.0 D1,265.0)	0.00	0.00	6,700.0	1,394.7	-562.1	1,402,226.69	3,198,900.91	40° 26' 7.131 N	104° 47' 7.657 W
PERMIT TARGET 55- - plan misses target center by 89.0ft at 6049.9ft MD (5811.4 TVD, 1495.0 N, -581.5 E) - Point	0.00	0.00	5,800.0	1,582.7	-591.1	1,402,414.48	3,198,870.36	40° 26' 8.989 N	104° 47' 8.032 W
DRILL TARGET 617F - plan hits target center - Point	0.00	0.00	6,200.0	1,519.7	-591.1	1,402,351.44	3,198,870.91	40° 26' 8.366 N	104° 47' 8.032 W

Casing Points

Measured Depth (ft)	Vertical Depth (ft)	Name	Casing Diameter (")	Hole Diameter (")
662.0	660.0	8 5/8"	8-5/8	12-1/4

Formations

Measured Depth (ft)	Vertical Depth (ft)	Name	Lithology	Dip (°)	Dip Direction (°)
7,489.7	7,250.0	CODELL		0.00	



Directional

Synergy Resources

SEC.4-T5N-R66W

Northridge Pad Sec.4-T5N-R66W

Northridge 21-4D

Wellbore #1

Plan #3 (1-12-10)

Anticollision Report

13 January, 2010

Company:	Synergy Resources	Local Co-ordinate Reference:	Well Northridge 21-4D
Project:	SEC.4-T5N-R66W	TVD Reference:	WELL @ 4753.0ft (Original Well Elev)
Reference Site:	Northridge Pad Sec.4-T5N-R66W	MD Reference:	WELL @ 4753.0ft (Original Well Elev)
Site Error:	0.0ft	North Reference:	True
Reference Well:	Northridge 21-4D	Survey Calculation Method:	Minimum Curvature
Well Error:	0.0ft	Output errors are at	2.00 sigma
Reference Wellbore	Wellbore #1	Database:	EDM den0-adp01 Server Data
Reference Design:	Plan #3 (1-12-10)	Offset TVD Reference:	Offset Datum

Reference	Plan #3 (1-12-10)		
Filter type:	NO GLOBAL FILTER: Using user defined selection & filtering criteria		
Interpolation Method:	MD Interval 100.0ft	Error Model:	ISCWSA
Depth Range:	Unlimited	Scan Method:	Closest Approach 3D
Results Limited by:	Maximum center-center distance of 2,000.0ft	Error Surface:	Elliptical Conic
Warning Levels Evaluated at:	2.00 Sigma		

Survey Tool Program	Date 1/13/2010			
From (ft)	To (ft)	Survey (Wellbore)	Tool Name	Description
0.0	8,204.7	Plan #3 (1-12-10) (Wellbore #1)	MWD	MWD - Standard

Summary						
Site Name	Reference Measured Depth (ft)	Offset Measured Depth (ft)	Distance Between Centres (ft)	Between Ellipses (ft)	Separation Factor	Warning
Offset Well - Wellbore - Design						
Northridge Pad Sec.4-T5N-R66W						
Northridge 11-4D - Wellbore #1 - Plan #3 (1-12-10)	200.0	200.0	12.1	11.4	17.907	CC, ES
Northridge 11-4D - Wellbore #1 - Plan #3 (1-12-10)	500.0	500.3	21.4	19.3	10.421	SF

Offset Design Northridge Pad Sec.4-T5N-R66W - Northridge 11-4D - Wellbore #1 - Plan #3 (1-12-10)												
Survey Program: 0-MWD												
Reference		Offset		Semi Major Axis		Distance						
Measured Depth (ft)	Vertical Depth (ft)	Measured Depth (ft)	Vertical Depth (ft)	Reference (ft)	Offset (ft)	Highside Toolface (°)	Offset Wellbore Centre +N/-S (ft)	+E/-W (ft)	Between Centres (ft)	Between Ellipses (ft)	Minimum Separation (ft)	Separation Factor
0.0	0.0	0.0	0.0	0.0	0.0	-151.04	-10.6	-5.8	12.1	12.1	0.00	N/A
100.0	100.0	100.0	100.0	0.1	0.1	-151.04	-10.6	-5.8	12.1	11.9	0.22	53.721
200.0	200.0	200.0	200.0	0.3	0.3	-151.04	-10.6	-5.8	12.1	11.4	0.67	17.907 CC, ES
300.0	300.0	300.0	300.0	0.6	0.6	-135.58	-10.6	-5.8	13.3	12.1	1.13	11.759
400.0	399.8	400.1	400.1	0.8	0.8	-142.46	-9.4	-7.2	16.6	15.0	1.58	10.479
500.0	499.5	500.3	500.1	1.0	1.0	-143.86	-6.0	-11.2	21.4	19.3	2.05	10.421 SF
600.0	598.7	600.4	599.9	1.3	1.3	-142.39	-0.3	-17.8	27.4	24.9	2.55	10.764
700.0	697.5	700.6	699.3	1.7	1.5	-139.72	7.6	-27.1	34.9	31.8	3.10	11.236
800.0	795.6	800.6	798.1	2.0	1.9	-136.69	17.8	-39.0	43.7	40.0	3.74	11.706
900.0	893.1	900.6	896.2	2.5	2.2	-133.72	30.3	-53.5	54.1	49.6	4.47	12.112
1,000.0	989.6	1,000.4	993.4	2.9	2.7	-130.97	44.9	-70.5	66.0	60.7	5.31	12.433
1,100.0	1,085.3	1,100.0	1,089.6	3.5	3.1	-128.50	61.7	-90.1	79.5	73.2	6.28	12.665
1,200.0	1,180.5	1,199.4	1,184.7	4.1	3.7	-125.39	80.6	-112.1	93.2	85.9	7.38	12.641
1,300.0	1,275.8	1,298.6	1,278.5	4.7	4.3	-121.25	101.6	-136.6	106.9	98.3	8.60	12.428
1,400.0	1,371.1	1,397.3	1,370.6	5.3	5.0	-116.44	124.6	-163.4	120.9	111.0	9.93	12.183
1,500.0	1,466.3	1,495.2	1,460.8	5.9	5.7	-111.26	149.4	-192.4	136.0	124.6	11.32	12.007
1,600.0	1,561.6	1,592.2	1,548.8	6.5	6.6	-105.92	175.9	-223.4	152.5	139.7	12.74	11.964
1,700.0	1,656.9	1,689.6	1,636.4	7.1	7.4	-101.04	203.6	-255.6	170.5	156.4	14.14	12.055
1,800.0	1,752.1	1,787.0	1,724.0	7.7	8.3	-97.10	231.3	-287.9	189.5	174.0	15.50	12.231
1,900.0	1,847.4	1,884.4	1,811.7	8.3	9.2	-93.88	259.0	-320.2	209.3	192.5	16.81	12.450
2,000.0	1,942.6	1,981.8	1,899.3	8.9	10.0	-91.22	286.7	-352.5	229.5	211.5	18.09	12.686
2,100.0	2,037.9	2,079.2	1,986.9	9.5	10.9	-88.99	314.4	-384.8	250.2	230.9	19.36	12.925
2,200.0	2,133.2	2,176.6	2,074.5	10.1	11.8	-87.10	342.1	-417.2	271.2	250.6	20.61	13.160
2,300.0	2,228.4	2,274.0	2,162.2	10.8	12.7	-85.48	369.8	-449.5	292.4	270.6	21.85	13.385
2,400.0	2,323.7	2,371.4	2,249.8	11.4	13.6	-84.08	397.5	-481.8	313.9	290.8	23.08	13.601

CC - Min centre to center distance or convergent point, SF - min separation factor, ES - min ellipse separation

ENSGN DIRECTIONAL Anticollision Report

Company:	Synergy Resources	Local Co-ordinate Reference:	Well Northridge 21-4D
Project:	SEC.4-T5N-R66W	TVD Reference:	WELL @ 4753.0ft (Original Well Elev)
Reference Site:	Northridge Pad Sec.4-T5N-R66W	MD Reference:	WELL @ 4753.0ft (Original Well Elev)
Site Error:	0.0ft	North Reference:	True
Reference Well:	Northridge 21-4D	Survey Calculation Method:	Minimum Curvature
Well Error:	0.0ft	Output errors are at	2.00 sigma
Reference Wellbore	Wellbore #1	Database:	EDM den0-adp01 Server Data
Reference Design:	Plan #3 (1-12-10)	Offset TVD Reference:	Offset Datum

Offset Design Northridge Pad Sec.4-T5N-R66W - Northridge 11-4D - Wellbore #1 - Plan #3 (1-12-10)														Offset Site Error:	0.0 ft
Survey Program: 0-MWD														Offset Well Error:	0.0 ft
Measured Depth (ft)	Vertical Depth (ft)	Measured Depth (ft)	Vertical Depth (ft)	Semi Major Axis Reference	Offset (ft)	Highside Toolface (°)	Offset Wellbore Centre +N/-S (ft)	+E/-W (ft)	Distance Between Centres (ft)	Between Ellipses (ft)	Minimum Separation (ft)	Separation Factor	Warning		
2,500.0	2,419.0	2,468.8	2,337.4	12.0	14.5	-82.86	425.2	-514.1	335.4	311.1	24.30	13.804			
2,600.0	2,514.2	2,566.3	2,425.0	12.6	15.4	-81.78	452.9	-546.4	357.1	331.6	25.52	13.996			
2,700.0	2,609.5	2,663.7	2,512.7	13.2	16.3	-80.83	480.6	-578.7	379.0	352.2	26.73	14.177			
2,800.0	2,704.8	2,761.1	2,600.3	13.8	17.2	-79.99	508.3	-611.0	400.9	372.9	27.94	14.346			
2,900.0	2,800.0	2,858.5	2,687.9	14.4	18.1	-79.23	536.0	-643.3	422.8	393.7	29.15	14.506			
3,000.0	2,895.3	2,955.9	2,775.5	15.1	18.9	-78.54	563.7	-675.6	444.9	414.5	30.36	14.656			
3,100.0	2,990.5	3,053.3	2,863.1	15.7	19.8	-77.92	591.4	-707.9	467.0	435.4	31.56	14.797			
3,200.0	3,085.8	3,150.7	2,950.8	16.3	20.7	-77.36	619.1	-740.2	489.1	456.4	32.76	14.929			
3,300.0	3,181.1	3,248.1	3,038.4	16.9	21.6	-76.84	646.8	-772.5	511.3	477.3	33.96	15.054			
3,400.0	3,276.3	3,345.5	3,126.0	17.5	22.5	-76.37	674.5	-804.8	533.5	498.4	35.17	15.172			
3,500.0	3,371.6	3,442.9	3,213.6	18.1	23.4	-75.93	702.2	-837.1	555.8	519.4	36.36	15.284			
3,600.0	3,466.9	3,540.3	3,301.3	18.8	24.3	-75.53	729.9	-869.4	578.1	540.5	37.56	15.389			
3,700.0	3,562.1	3,637.8	3,388.9	19.4	25.2	-75.16	757.6	-901.7	600.4	561.6	38.76	15.488			
3,800.0	3,657.4	3,735.2	3,476.5	20.0	26.1	-74.81	785.3	-934.0	622.7	582.7	39.96	15.583			
3,900.0	3,752.6	3,832.6	3,564.1	20.6	27.0	-74.49	813.0	-966.3	645.1	603.9	41.16	15.672			
4,000.0	3,847.9	3,930.0	3,651.8	21.2	27.9	-74.19	840.7	-998.6	667.4	625.1	42.36	15.757			
4,100.0	3,943.2	4,027.4	3,739.4	21.9	28.8	-73.91	868.4	-1,030.9	689.8	646.3	43.55	15.838			
4,200.0	4,038.4	4,124.8	3,827.0	22.5	29.7	-73.65	896.1	-1,063.2	712.2	667.5	44.75	15.915			
4,300.0	4,133.7	4,222.2	3,914.6	23.1	30.6	-73.40	923.8	-1,095.5	734.6	688.7	45.95	15.988			
4,400.0	4,229.0	4,319.6	4,002.2	23.7	31.5	-73.17	951.5	-1,127.8	757.0	709.9	47.14	16.058			
4,500.0	4,324.2	4,417.0	4,089.9	24.3	32.5	-72.95	979.2	-1,160.1	779.5	731.1	48.34	16.125			
4,600.0	4,419.5	4,514.4	4,177.5	24.9	33.4	-72.75	1,006.9	-1,192.4	801.9	752.4	49.54	16.188			
4,700.0	4,514.8	4,611.8	4,265.1	25.6	34.3	-72.55	1,034.6	-1,224.7	824.4	773.6	50.73	16.249			
4,800.0	4,610.0	4,709.3	4,352.7	26.2	35.2	-72.37	1,062.3	-1,257.0	846.8	794.9	51.93	16.308			
4,900.0	4,705.3	4,806.7	4,440.4	26.8	36.1	-72.19	1,090.0	-1,289.3	869.3	816.2	53.12	16.364			
5,000.0	4,800.5	4,904.1	4,528.0	27.4	37.0	-72.02	1,117.7	-1,321.6	891.8	837.5	54.32	16.417			
5,100.0	4,895.8	5,001.5	4,615.6	28.0	37.9	-71.87	1,145.4	-1,353.9	914.3	858.8	55.52	16.469			
5,200.0	4,991.1	5,098.9	4,703.2	28.6	38.8	-71.71	1,173.1	-1,386.2	936.8	880.1	56.71	16.518			
5,300.0	5,086.3	5,196.3	4,790.9	29.3	39.7	-71.57	1,200.8	-1,418.5	959.3	901.4	57.91	16.565			
5,400.0	5,181.6	5,293.7	4,878.5	29.9	40.6	-71.43	1,228.5	-1,450.8	981.8	922.7	59.10	16.611			
5,500.0	5,276.9	5,391.1	4,966.1	30.5	41.5	-71.30	1,256.2	-1,483.1	1,004.3	944.0	60.30	16.655			
5,600.0	5,372.2	5,488.5	5,053.7	31.1	42.4	-71.36	1,283.9	-1,515.4	1,026.9	965.4	61.52	16.691			
5,700.0	5,468.4	5,585.5	5,141.0	31.5	43.3	-71.52	1,311.5	-1,547.6	1,050.5	987.8	62.64	16.771			
5,800.0	5,565.6	5,714.6	5,258.1	31.9	44.2	-71.46	1,346.7	-1,588.6	1,073.8	1,010.2	63.65	16.871			
5,900.0	5,663.4	5,848.6	5,382.3	32.3	45.1	-71.35	1,379.6	-1,627.0	1,095.1	1,030.5	64.54	16.968			
6,000.0	5,762.0	5,984.5	5,510.4	32.6	45.9	-71.20	1,409.0	-1,661.3	1,114.1	1,048.8	65.30	17.061			
6,100.0	5,861.0	6,122.2	5,642.3	32.8	46.5	-71.02	1,434.8	-1,691.4	1,130.9	1,065.0	65.93	17.154			
6,200.0	5,960.5	6,261.5	5,777.4	33.0	47.1	-70.80	1,456.7	-1,716.9	1,145.4	1,079.0	66.42	17.246			
6,300.0	6,060.3	6,402.2	5,915.5	33.2	47.6	-70.54	1,474.4	-1,737.5	1,157.5	1,090.8	66.77	17.336			
6,400.0	6,160.3	6,544.3	6,056.1	33.3	47.9	-70.24	1,487.7	-1,753.1	1,167.2	1,100.2	66.98	17.427			
6,500.0	6,260.3	6,687.5	6,198.6	33.4	48.2	-91.13	1,496.6	-1,763.5	1,174.2	1,107.1	67.06	17.509			
6,600.0	6,360.3	6,831.6	6,342.6	33.5	48.4	-90.92	1,500.9	-1,768.4	1,177.6	1,110.4	67.19	17.526			
6,700.0	6,460.3	6,949.3	6,460.3	33.6	48.5	-90.90	1,501.2	-1,768.8	1,177.9	1,110.5	67.37	17.484			
6,800.0	6,560.3	7,049.3	6,560.3	33.7	48.5	-90.90	1,501.2	-1,768.8	1,177.9	1,110.4	67.54	17.440			
6,900.0	6,660.3	7,149.3	6,660.3	33.8	48.6	-90.90	1,501.2	-1,768.8	1,177.9	1,110.2	67.71	17.395			
7,000.0	6,760.3	7,249.3	6,760.3	33.9	48.7	-90.90	1,501.2	-1,768.8	1,177.9	1,110.0	67.89	17.350			
7,100.0	6,860.3	7,349.3	6,860.3	33.9	48.7	-90.90	1,501.2	-1,768.8	1,177.9	1,109.8	68.07	17.305			
7,200.0	6,960.3	7,449.3	6,960.3	34.0	48.8	-90.90	1,501.2	-1,768.8	1,177.9	1,109.6	68.25	17.259			
7,300.0	7,060.3	7,549.3	7,060.3	34.1	48.9	-90.90	1,501.2	-1,768.8	1,177.9	1,109.5	68.43	17.212			
7,400.0	7,160.3	7,649.3	7,160.3	34.2	48.9	-90.90	1,501.2	-1,768.8	1,177.9	1,109.3	68.62	17.166			
7,500.0	7,260.3	7,749.3	7,260.3	34.3	49.0	-90.90	1,501.2	-1,768.8	1,177.9	1,109.1	68.81	17.119			
7,600.0	7,360.3	7,849.3	7,360.3	34.4	49.1	-90.90	1,501.2	-1,768.8	1,177.9	1,108.9	69.00	17.071			

CC - Min centre to center distance or convergent point, SF - min separation factor, ES - min ellipse separation



ENSGN DIRECTIONAL

Anticollision Report

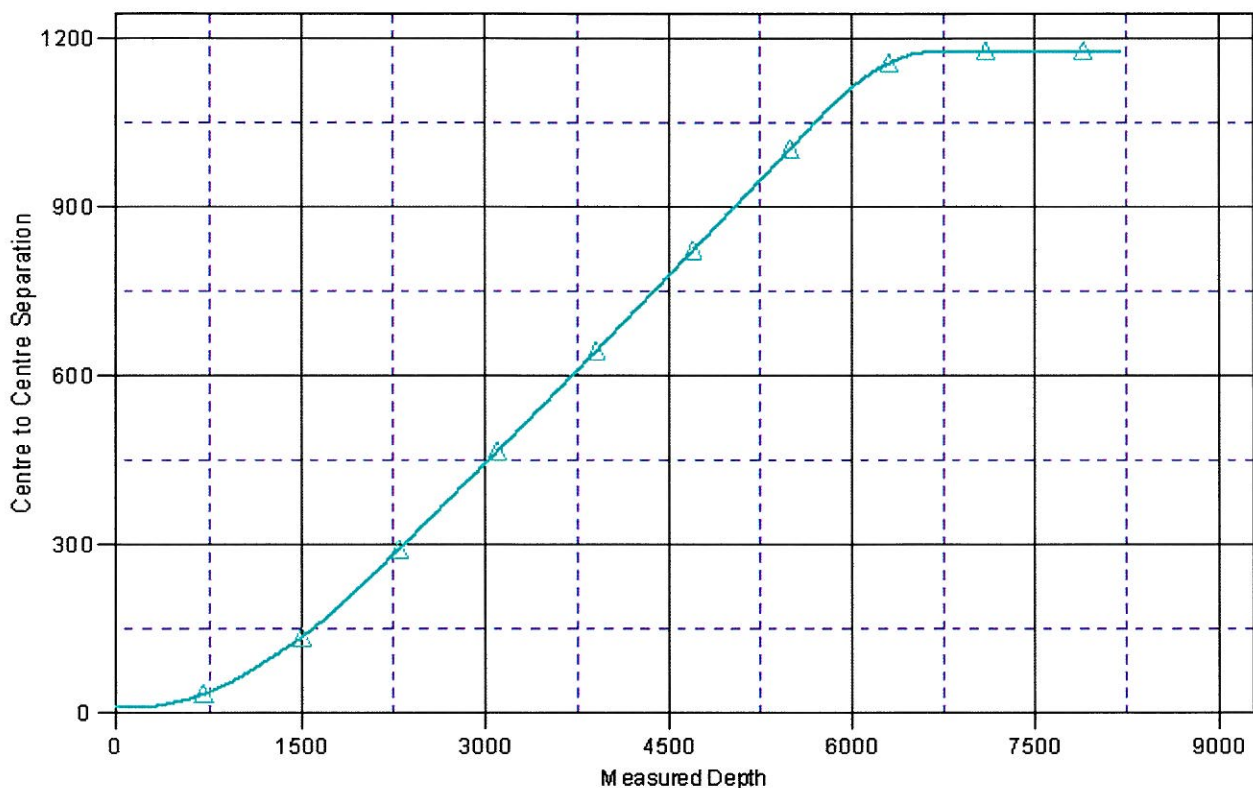
Company:	Synergy Resources	Local Co-ordinate Reference:	Well Northridge 21-4D
Project:	SEC.4-T5N-R66W	TVD Reference:	WELL @ 4753.0ft (Original Well Elev)
Reference Site:	Northridge Pad Sec.4-T5N-R66W	MD Reference:	WELL @ 4753.0ft (Original Well Elev)
Site Error:	0.0ft	North Reference:	True
Reference Well:	Northridge 21-4D	Survey Calculation Method:	Minimum Curvature
Well Error:	0.0ft	Output errors are at	2.00 sigma
Reference Wellbore	Wellbore #1	Database:	EDM den0-adp01 Server Data
Reference Design:	Plan #3 (1-12-10)	Offset TVD Reference:	Offset Datum

Offset Design Northridge Pad Sec.4-T5N-R66W - Northridge 11-4D - Wellbore #1 - Plan #3 (1-12-10)													Offset Site Error:	0.0 ft
Survey Program: 0-MWD													Offset Well Error:	0.0 ft
Reference	Offset	Semi Major Axis		Distance		Minimum		Separation		Warning				
Measured Depth (ft)	Vertical Depth (ft)	Measured Depth (ft)	Vertical Depth (ft)	Reference (ft)	Offset (ft)	Highside Toolface (°)	Offset Wellbore Centre +N/-S (ft)	+E/-W (ft)	Between Centres (ft)	Between Ellipses (ft)	Minimum Separation (ft)	Separation Factor		
7,700.0	7,460.3	7,949.3	7,460.3	34.5	49.1	-90.90	1,501.2	-1,768.8	1,177.9	1,108.7	69.19	17.024		
7,800.0	7,560.3	8,049.3	7,560.3	34.6	49.2	-90.90	1,501.2	-1,768.8	1,177.9	1,108.5	69.39	16.976		
7,900.0	7,660.3	8,149.3	7,660.3	34.7	49.3	-90.90	1,501.2	-1,768.8	1,177.9	1,108.3	69.59	16.927		
8,000.0	7,760.3	8,249.3	7,760.3	34.8	49.4	-90.90	1,501.2	-1,768.8	1,177.9	1,108.1	69.79	16.879		
8,100.0	7,860.3	8,349.3	7,860.3	34.9	49.4	-90.90	1,501.2	-1,768.8	1,177.9	1,107.9	69.99	16.830		
8,200.0	7,960.3	8,449.3	7,960.3	35.0	49.5	-90.90	1,501.2	-1,768.8	1,177.9	1,107.7	70.19	16.781		
8,204.7	7,965.0	8,454.1	7,965.0	35.1	49.5	-90.90	1,501.2	-1,768.8	1,177.9	1,107.7	70.20	16.778		

Company:	Synergy Resources	Local Co-ordinate Reference:	Well Northridge 21-4D
Project:	SEC.4-T5N-R66W	TVD Reference:	WELL @ 4753.0ft (Original Well Elev)
Reference Site:	Northridge Pad Sec.4-T5N-R66W	MD Reference:	WELL @ 4753.0ft (Original Well Elev)
Site Error:	0.0ft	North Reference:	True
Reference Well:	Northridge 21-4D	Survey Calculation Method:	Minimum Curvature
Well Error:	0.0ft	Output errors are at	2.00 sigma
Reference Wellbore	Wellbore #1	Database:	EDM den0-adp01 Server Data
Reference Design:	Plan #3 (1-12-10)	Offset TVD Reference:	Offset Datum

Reference Depths are relative to WELL @ 4753.0ft (Original Well Elev) Coordinates are relative to: Northridge 21-4D
 Offset Depths are relative to Offset Datum Coordinate System is US State Plane 1983, Colorado Northern Zone
 Central Meridian is 105° 30' 0.000 W ° Grid Convergence at Surface is: 0.46°

Ladder Plot



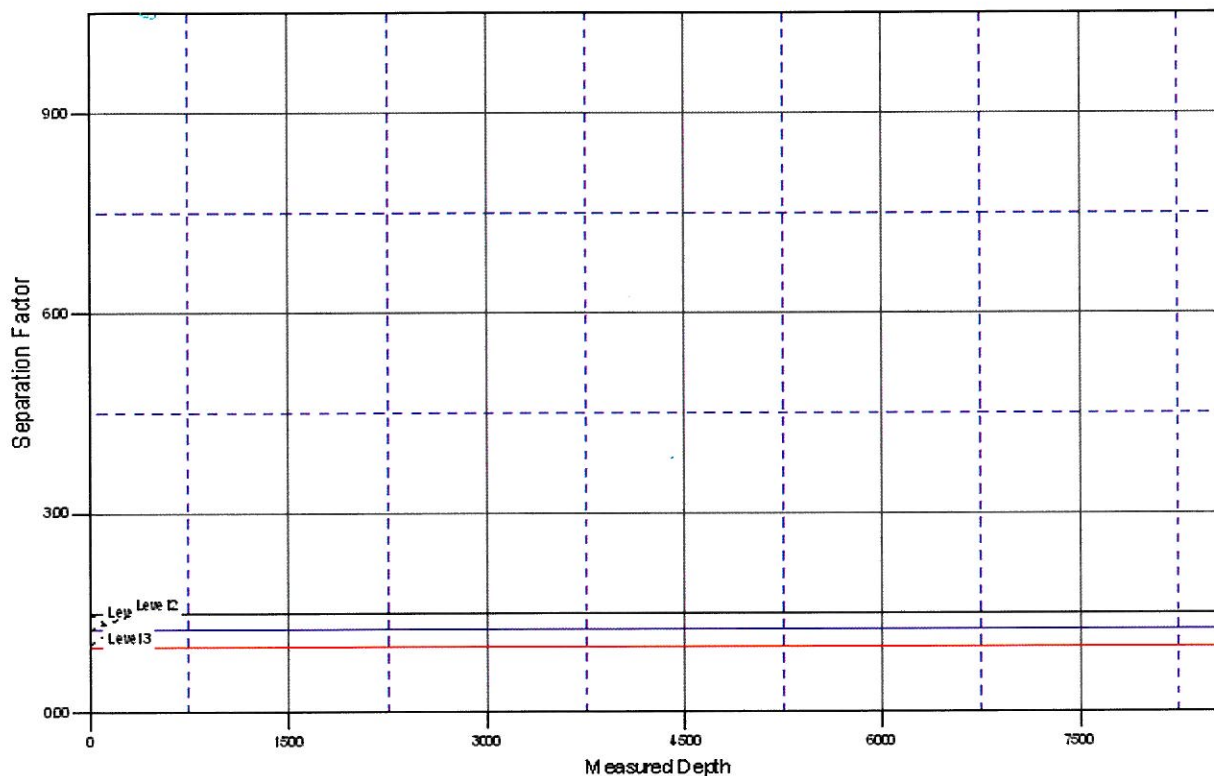
LEGEND

Northridge 21-4D, Wellbore #1, Plan #3 (1-12-10) V0

Company:	Synergy Resources	Local Co-ordinate Reference:	Well Northridge 21-4D
Project:	SEC.4-T5N-R66W	TVD Reference:	WELL @ 4753.0ft (Original Well Elev)
Reference Site:	Northridge Pad Sec.4-T5N-R66W	MD Reference:	WELL @ 4753.0ft (Original Well Elev)
Site Error:	0.0ft	North Reference:	True
Reference Well:	Northridge 21-4D	Survey Calculation Method:	Minimum Curvature
Well Error:	0.0ft	Output errors are at	2.00 sigma
Reference Wellbore	Wellbore #1	Database:	EDM den0-adp01 Server Data
Reference Design:	Plan #3 (1-12-10)	Offset TVD Reference:	Offset Datum

Reference Depths are relative to WELL @ 4753.0ft (Original Well Elev) Coordinates are relative to: Northridge 21-4D
Offset Depths are relative to Offset Datum Coordinate System is US State Plane 1983, Colorado Northern Zone
Central Meridian is 105° 30' 0.000 W ° Grid Convergence at Surface is: 0.46°

Separation Factor Plot



LEGEND

Northridge 21-4D, Wellbore #1, Plan #3 (1-12-10) \D