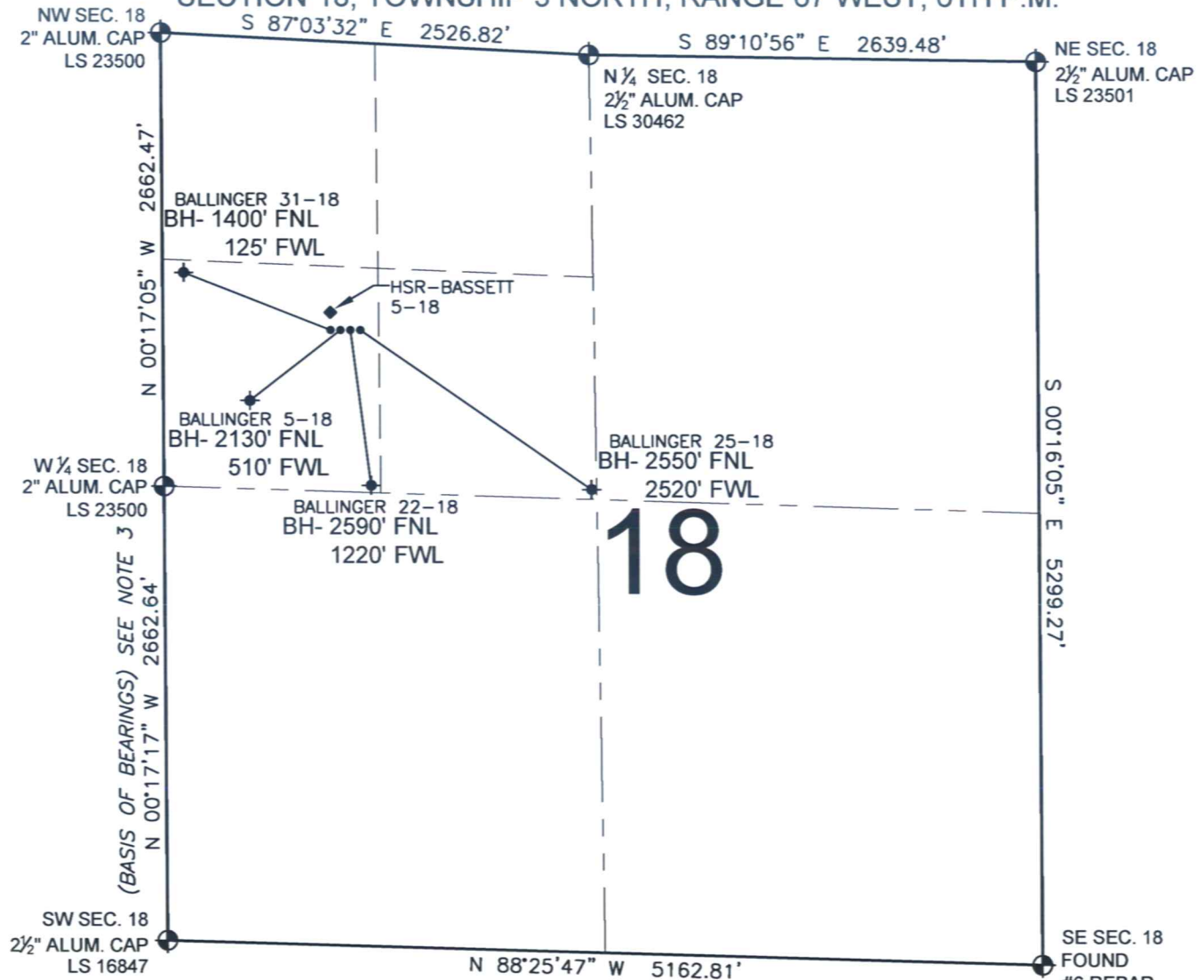


# PAD DRAWING - BALLINGER 4 PAD

SECTION 18, TOWNSHIP 3 NORTH, RANGE 67 WEST, 6TH P.M.



## LEGEND

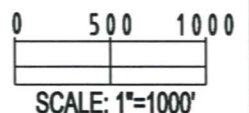
- = EXISTING MONUMENT    ♦ = BOTTOM HOLE    BH= BOTTOM HOLE
- = PROPOSED WELL    ♦ = EXISTING WELL


## NOTES:

- THIS SURVEY WAS DONE BY GPS METHODS AND CONFORMS TO THE MINIMUM STANDARDS SET BY THE C.O.G.C.C., RULE NO. 215
- ELEVATIONS SHOWN AT THE WELL HEAD, AS WELL AS HORIZONTAL CONTROL, ARE BASED ON GPS-RTK VALUES DERIVED FROM DOING 2-HOUR STATIC GPS SESSIONS AND REDUCTIONS USING O.P.U.S. SOLUTIONS.  
VERTICAL = NAVD88;    HORIZONTAL = NAD83/92
- THE BEARINGS SHOWN HEREON ARE BASED ON GPS OBSERVATIONS BETWEEN THE MONUMENTS SHOWN HEREON AS FOUND ON THE FIELD DATE BELOW.
- DISTANCES SHOWN ARE AT GROUND LEVEL, AS MEASURED IN THE FIELD, WITH TIES TO WELLS MEASURED AT A PERPENDICULAR TO SECTION LINES.

## NOTES:

- BALLINGER 31-18 TO BE AT 1693' FNL, 987' FWL. BOTTOM HOLE AT 1400' FNL & 125' FWL.
- BALLINGER 5-18 TO BE AT 1693' FNL, 1003' FWL. BOTTOM HOLE AT 2130' FNL & 510' FWL.
- BALLINGER 22-18 TO BE AT 1692' FNL, 1019' FWL. BOTTOM HOLE AT 2590' FNL & 1220' FWL.
- BALLINGER 25-18 TO BE AT 1693' FNL, 1035' FWL. BOTTOM HOLE AT 2550' FNL & 2520' FWL.
- HSR-BASSETT 5-18 IS 1645' FNL, 987' FWL.



REVISIONS		PREPARED BY:
INITIAL	DATE	
		 <b>PFS</b> Petroleum Field Services, LLC 1801 W. 13th Ave. Denver, CO 80204

KERR-MCGEE OIL & GAS ONSHORE LP

FIELD DATE:  
12-15-09

PAD NAME:  
BALLINGER 4 PAD

DRAWING DATE:  
12-22-09

SURFACE LOCATION:

BY:  
SMF

WELD COUNTY, COLORADO  
SW 1/4 NW 1/4, SEC. 18, T3N, R67W