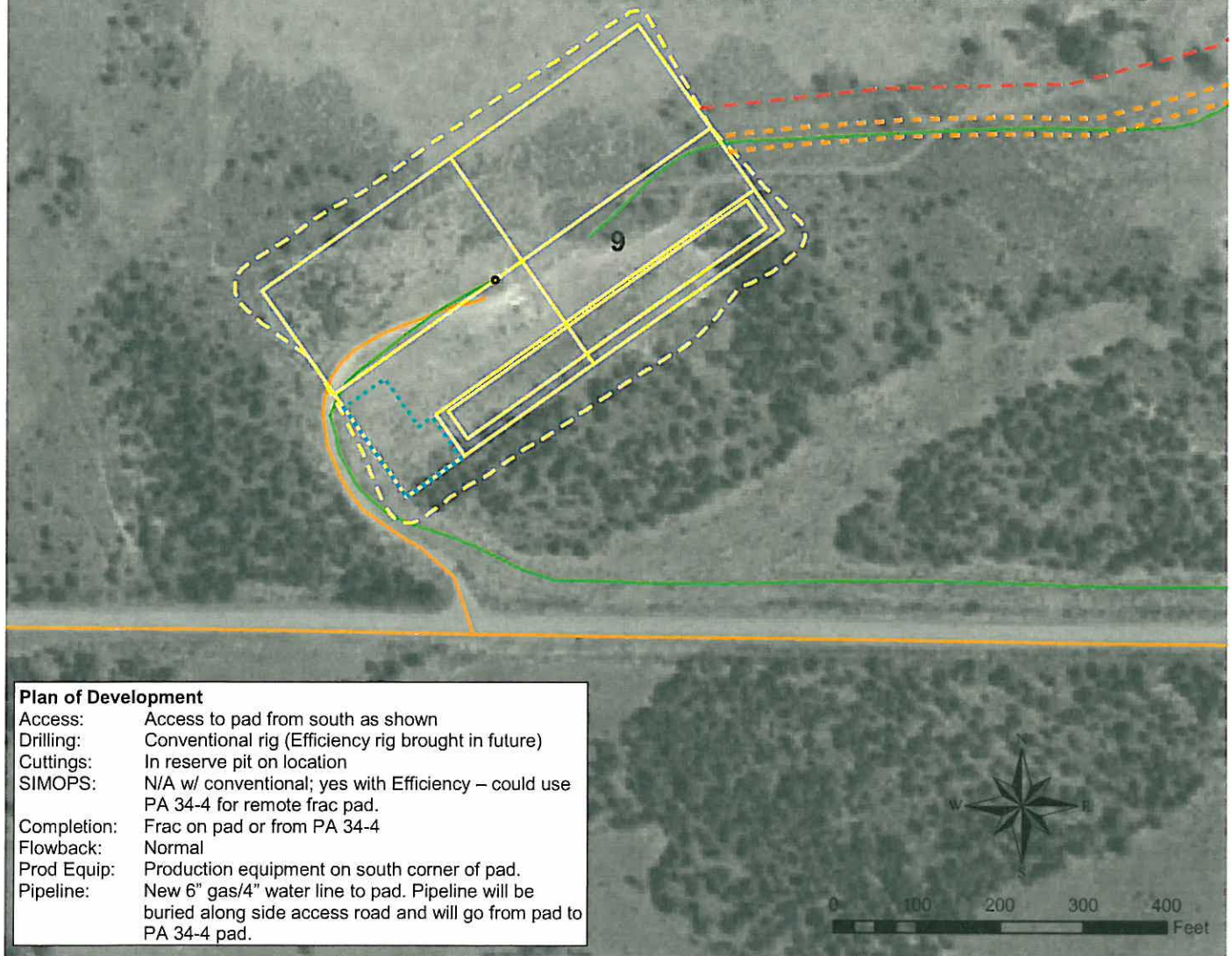
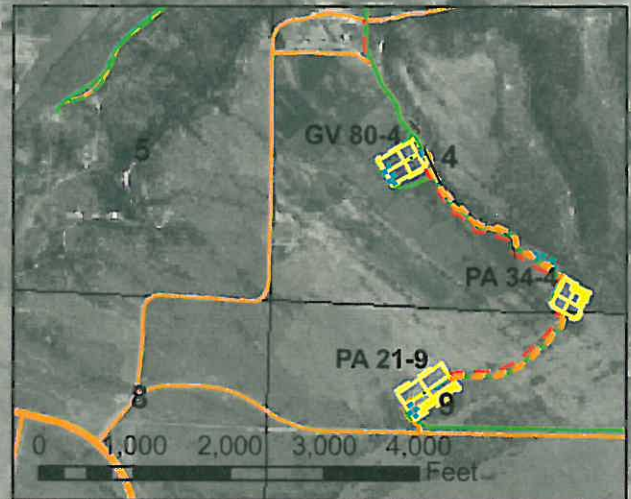


Geologist Information

General: 15 new wells (4 now, 11 future), 1 existing well
 Ownership: Fee surface (Savage), Fee minerals
 SUA Status: Have
 Spacing Units: 1 spacing unit
 Adjacent Owners: Libby, BLM, Knight, others



Plan of Development

Access: Access to pad from south as shown
 Drilling: Conventional rig (Efficiency rig brought in future)
 Cuttings: In reserve pit on location
 SIMOPS: N/A w/ conventional; yes with Efficiency – could use PA 34-4 for remote frac pad.
 Completion: Frac on pad or from PA 34-4
 Flowback: Normal
 Prod Equip: Production equipment on south corner of pad.
 Pipeline: New 6" gas/4" water line to pad. Pipeline will be buried along side access road and will go from pad to PA 34-4 pad.

Legend

- Proposed Road
- Existing Road
- Proposed Production Equipment Area
- Existing Production Equipment
- Existing Well
- Limit of Disturbance
- Proposed Pad or Pit
- Existing Pipeline
- Existing Fence
- Proposed Frac Line

Williams Production RMT

PA 21-9 Plan of Development
 T7S R95W, Section 9

Date Prepared: September 8, 2008

