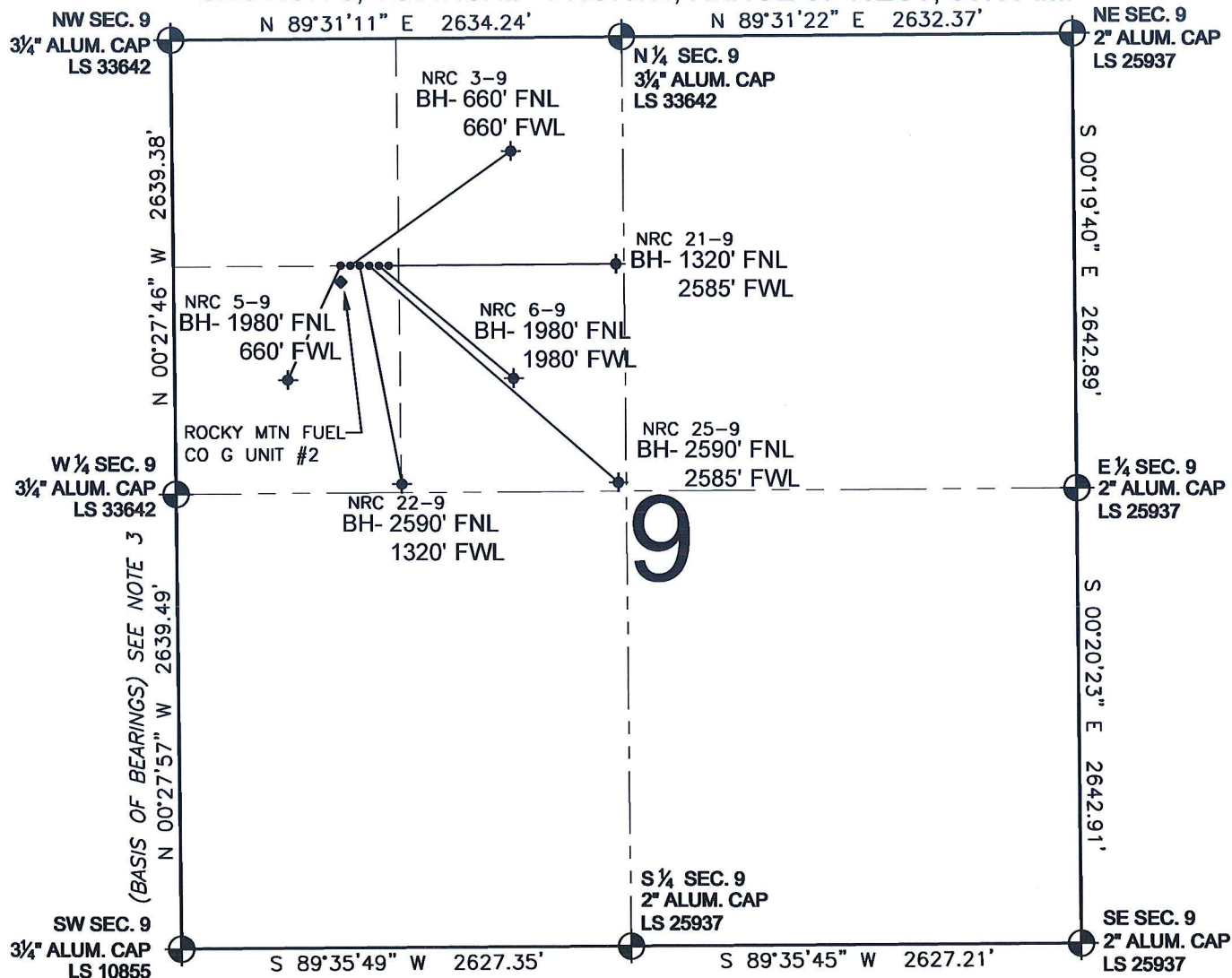


PAD DRAWING - NRC 6 PAD

SECTION 9, TOWNSHIP 1 NORTH, RANGE 67 WEST, 6TH P.M.



LEGEND


- ⊕ = EXISTING MONUMENT ⊕ = BOTTOM HOLE BH= BOTTOM HOLE
 ● = PROPOSED WELL ◆ = EXISTING WELL

NOTES:

- THIS SURVEY WAS DONE BY GPS METHODS AND CONFORMS TO THE MINIMUM STANDARDS SET BY THE C.O.G.C.C., RULE NO. 215
- ELEVATIONS SHOWN AT THE WELL HEAD, AS WELL AS HORIZONTAL CONTROL, ARE BASED ON GPS-RTK VALUES DERIVED FROM DOING 2-HOUR STATIC GPS SESSIONS AND REDUCTIONS USING O.P.U.S. SOLUTIONS.
VERTICAL = NAVD88; HORIZONTAL = NAD83/92
- THE BEARINGS SHOWN HEREON ARE BASED ON GPS OBSERVATIONS BETWEEN THE MONUMENTS SHOWN HEREON AS FOUND ON THE FIELD DATE BELOW.
- DISTANCES SHOWN ARE AT GROUND LEVEL, AS MEASURED IN THE FIELD, WITH TIES TO WELLS MEASURED AT A PERPENDICULAR TO SECTION LINES.

NOTES:

- NRC 5-9 TO BE AT 1320' FNL, 1178' FWL.
 BOTTOM HOLE AT 1980' FNL & 660' FWL.
 NRC 3-9 TO BE AT 1320' FNL, 1194' FWL.
 BOTTOM HOLE AT 660' FNL & 1980' FWL.
 NRC 22-9 TO BE AT 1320' FNL, 1210' FWL.
 BOTTOM HOLE AT 2590' FNL & 1320' FWL.
 NRC 25-9 TO BE AT 1320' FNL, 1226' FWL.
 BOTTOM HOLE AT 2590' FNL & 2585' FWL.
 NRC 6-9 TO BE AT 1320' FNL, 1242' FWL.
 BOTTOM HOLE AT 1980' FNL & 1980' FWL.
 NRC 21-9 TO BE AT 1320' FNL, 1258' FWL.
 BOTTOM HOLE AT 1320' FNL & 2585' FWL.
 ROCKY MTN FUEL CO G UNIT #2 IS 1369' FNL & 1178' FWL

REVISIONS		PREPARED BY:	 Petroleum Field Services, LLC 1801 W. 13th Ave. Denver, CO 80204
INITIAL	DATE		

KERR-MCGEE OIL & GAS ONSHORE LP

FIELD DATE:
12-11-09

PAD NAME:
NRC 6 PAD

DRAWING DATE:
12-14-09

SURFACE LOCATION:

BY:
SMF

WELD COUNTY, COLORADO
SW 1/4 NW 1/4, SEC. 9, T1N, R67W

