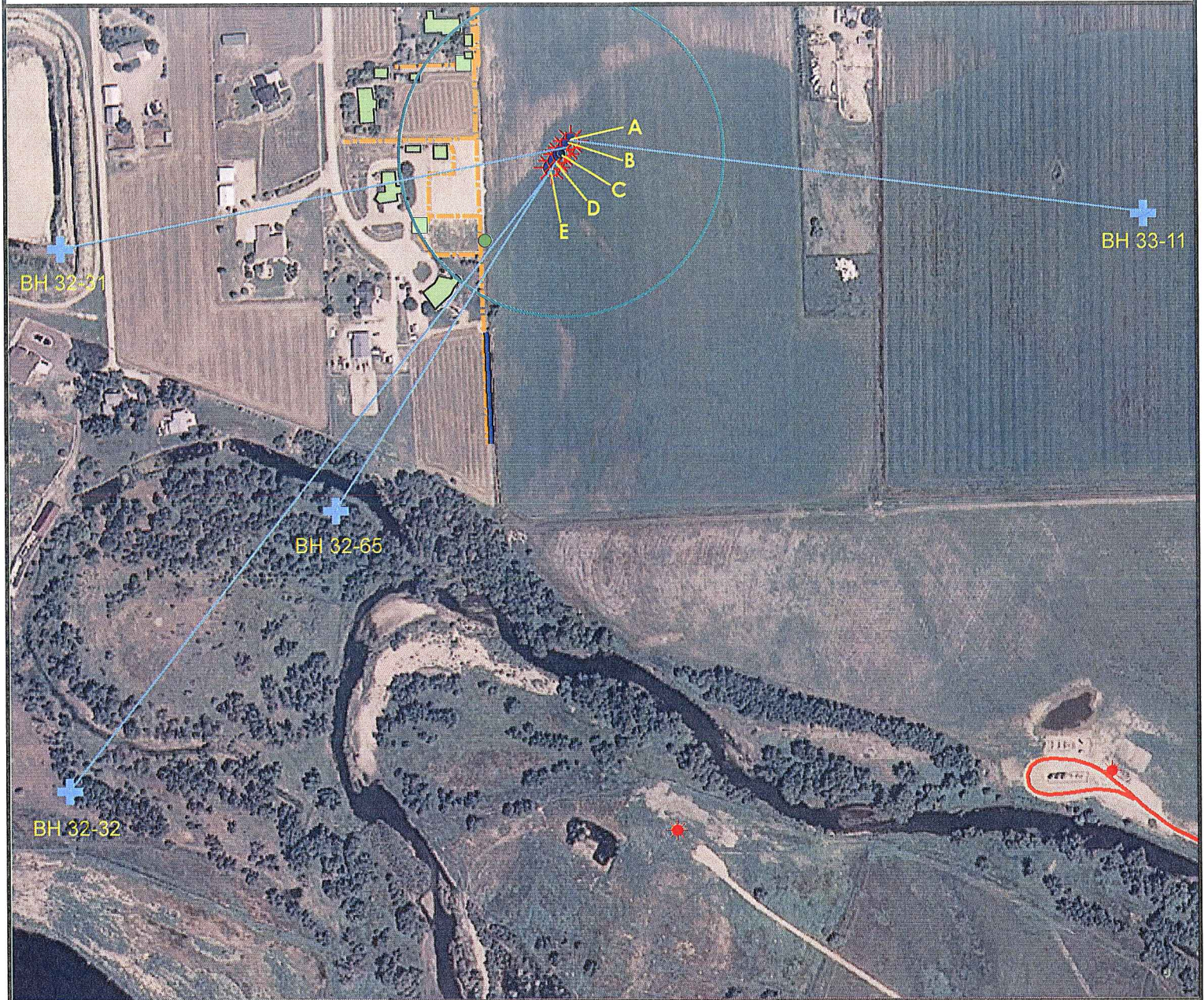
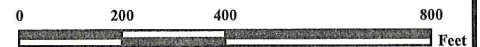


# Bottom Hole Locations



- A. Proposed well AG 33-11 D. E. Proposed well AG 32-32 D.  
 B. Proposed well AG 32-31 D.  
 C. Proposed well AG 32-41.  
 D. Proposed well AG 32-65 D.



## Legend

- Bottom Hole
- Proposed Well
- Building/Residence
- Oil & Gas Equipment
- Existing Well
- Water Body
- Utility Box
- Railroad
- Water Well
- Fence
- CattleGuard/Gate
- Overhead Power Line
- Bridge
- Pipeline
- ECD
- Access Road
- 400' Radius
- Ditch/Canal
- Facilities Enclosure
- Concrete Walled Ditch

## Bottom Hole Locations AG Sec. 32 Multi Well Pad

Surface Location: T6N R66W S32  
 Description of surface uses : Open Field

Field Date: 01/08/2010  
 Drawing Date: 2/12/2010  
 Drafter: CGR  
 Checked By: CGR  
 Revision: 1  
 Aerial Photo supplied by NAIP - 2009

Prepared for:  
**ORR ENERGY  
 LLC**



Use our resources to find yours!  
[www.petro-fs.com](http://www.petro-fs.com)

1801 W. 13th Ave Suite 207  
 Denver, CO 80204  
 (303) 928-7128  
 111 E. Third Street  
 Rifle, CO 81650  
 (970) 625-4740