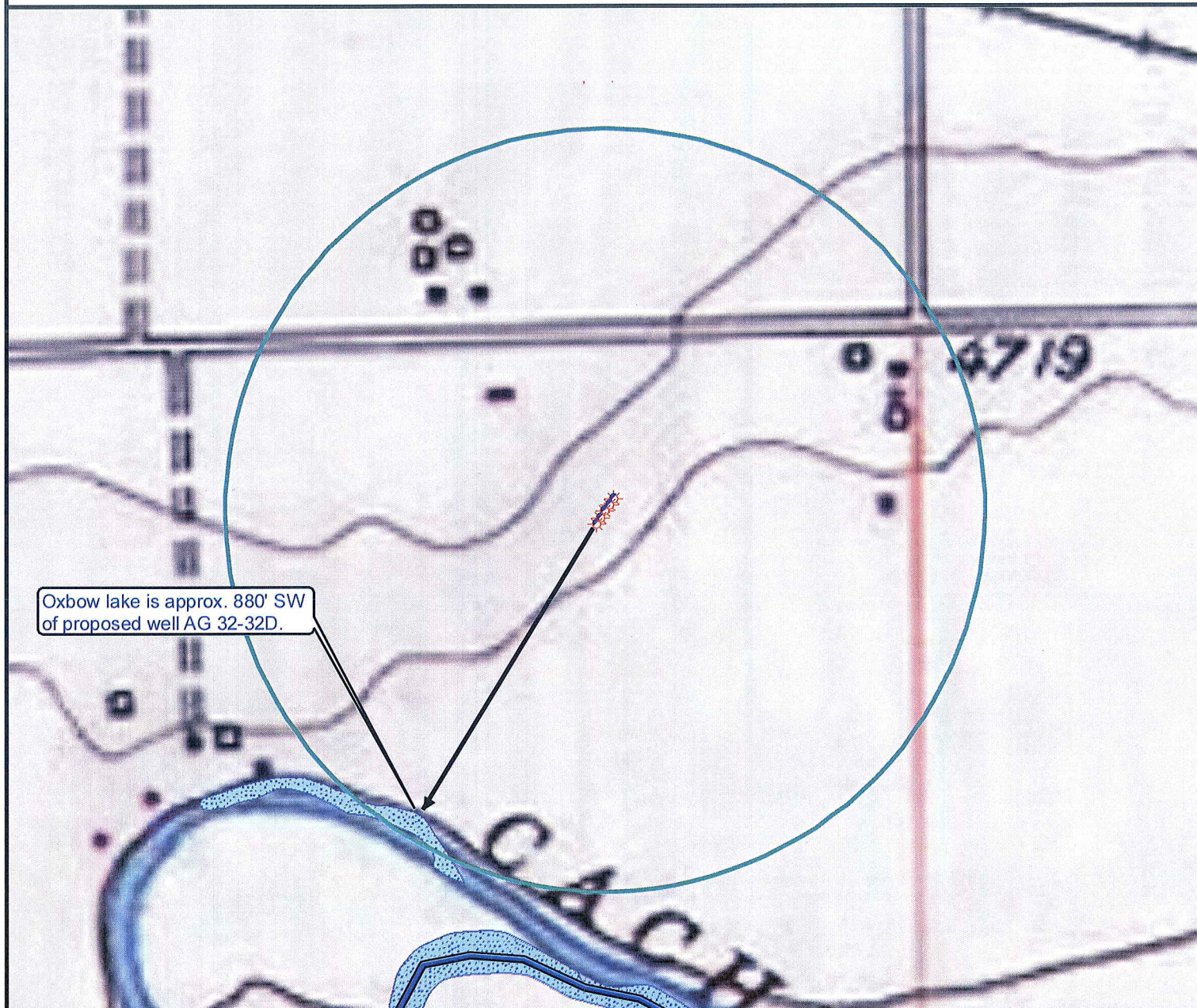


# Hydrology Map



## Legend

- |                      |                       |
|----------------------|-----------------------|
| Proposed Well        | Building/Residence    |
| Existing Well        | Oil & Gas Equipment   |
| Water Well           | Water Body            |
| Pedestal             | Utility Box           |
| CattleGuard/Gate     | Railroad              |
| Bridge               | Fence                 |
| ECD                  | Overhead Power Line   |
| 1000' Radius         | Pipeline              |
| Facilities Enclosure | Access Road           |
|                      | Ditch/Canal           |
|                      | Concrete Walled Ditch |

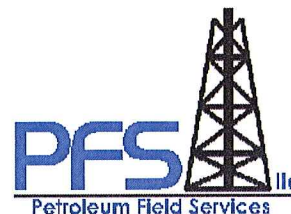
## 1000ft Radius Map of Surface Water and Riparian Areas

### AG Sec. 32 Multi Well Pad

Surface Location: T6N R66W S32

Field Date: 01/08/2010  
Drawing Date: 01/12/2010  
Drafter: BHF  
Checked By: MPS  
Revision: 1

Prepared for:  
**ORR ENERGY  
LLC**



Use our resources to find yours!  
[www.petro-fs.com](http://www.petro-fs.com)

1801 W. 13th Ave  
Denver, CO 80204  
(303) 928-7128

111 E. Third Street  
Suite 207  
Rifle, CO 81650  
(970) 625-4740