

Noble Energy (Rockies)

Garfield County, CO

Sec. 35-T7S-R95W (SGV 35D2 PAD)

BM 35-11A - A 3

Wellbore #1

Plan: Plan #1 Proposal

Sperry Drilling Services Proposal Report

20 October, 2009

Well Coordinates: 579,181.93 N, 1,301,241.28 E (39° 23' 51.13" N, 107° 58' 22.40" W)

Ground Level: 8,846.00 ft

Local Coordinate Origin:

Centered on Well BM 35-11A - Slot A 3

Viewing Datum:

RKB - 24' @ 8870.00ft

TVDs to System:

N

North Reference:

Grid

Unit System:

API - US Survey Feet - Custom

Geodetic Scale Factor Applied

Version: 2003.16 Build: 431

HALLIBURTON

Plan Report for BM 35-11A - Plan #1 Proposal

Measured Depth (ft)	Inclination (°)	Azimuth (°)	Vertical Depth (ft)	+N/-S (ft)	+E/-W (ft)	Vertical Section (ft)	Dogleg Rate (°/100ft)	Build Rate (°/100ft)	Turn Rate (°/100ft)	Toolface Azimuth (°)
0.00	0.00	0.00	0.00	0.00	0.00	0.00	0.00	0.00	0.00	0.00
BM 35-11A 100' FNL Hardline Tgt										
100.00	0.00	0.00	100.00	0.00	0.00	0.00	0.00	0.00	0.00	0.00
200.00	0.00	0.00	200.00	0.00	0.00	0.00	0.00	0.00	0.00	0.00
225.00	0.00	0.00	225.00	0.00	0.00	0.00	0.00	0.00	0.00	0.00
Kickoff at 225.00ft										
300.00	1.50	26.44	299.99	0.88	0.44	0.98	2.00	2.00	0.00	26.44
325.00	2.00	26.44	324.98	1.56	0.78	1.74	2.00	2.00	0.00	0.00
Build Rate = 2.00°/100ft										
400.00	3.50	26.44	399.89	4.78	2.38	5.34	2.00	2.00	0.00	0.00
500.00	5.50	26.44	499.58	11.81	5.87	13.18	2.00	2.00	0.00	0.00
600.00	7.50	26.44	598.93	21.94	10.91	24.49	2.00	2.00	0.00	0.00
700.00	9.50	26.44	697.83	35.18	17.50	39.26	2.00	2.00	0.00	0.00
800.00	11.50	26.44	796.15	51.49	25.61	57.47	2.00	2.00	0.00	0.00
821.31	11.93	26.44	817.01	55.37	27.54	61.79	2.00	2.00	0.00	0.00
End Build at 821.31ft										
900.00	11.93	26.44	894.00	69.93	34.78	78.05	0.00	0.00	0.00	0.00
1,000.00	11.93	26.44	991.85	88.43	43.98	98.70	0.00	0.00	0.00	0.00
1,100.00	11.93	26.44	1,089.69	106.93	53.18	119.35	0.00	0.00	0.00	0.00
1,200.00	11.93	26.44	1,187.53	125.44	62.39	140.00	0.00	0.00	0.00	0.00
1,300.00	11.93	26.44	1,285.37	143.94	71.59	160.65	0.00	0.00	0.00	0.00
1,400.00	11.93	26.44	1,383.21	162.44	80.79	181.30	0.00	0.00	0.00	0.00
1,500.00	11.93	26.44	1,481.05	180.95	89.99	201.95	0.00	0.00	0.00	0.00
1,600.00	11.93	26.44	1,578.90	199.45	99.19	222.60	0.00	0.00	0.00	0.00
1,700.00	11.93	26.44	1,676.74	217.95	108.40	243.25	0.00	0.00	0.00	0.00
1,800.00	11.93	26.44	1,774.58	236.45	117.60	263.90	0.00	0.00	0.00	0.00
1,900.00	11.93	26.44	1,872.42	254.96	126.80	284.55	0.00	0.00	0.00	0.00
2,000.00	11.93	26.44	1,970.26	273.46	136.00	305.20	0.00	0.00	0.00	0.00
2,100.00	11.93	26.44	2,068.10	291.96	145.21	325.85	0.00	0.00	0.00	0.00
2,200.00	11.93	26.44	2,165.94	310.47	154.41	346.50	0.00	0.00	0.00	0.00
2,300.00	11.93	26.44	2,263.79	328.97	163.61	367.16	0.00	0.00	0.00	0.00
2,380.00	11.93	26.44	2,342.06	343.77	170.97	383.68	0.00	0.00	0.00	0.00
8 5/8" Casing Pt.										
2,400.00	11.93	26.44	2,361.63	347.47	172.81	387.81	0.00	0.00	0.00	0.00
2,500.00	11.93	26.44	2,459.47	365.98	182.02	408.46	0.00	0.00	0.00	0.00
2,600.00	11.93	26.44	2,557.31	384.48	191.22	429.11	0.00	0.00	0.00	0.00
2,700.00	11.93	26.44	2,655.15	402.98	200.42	449.76	0.00	0.00	0.00	0.00
2,800.00	11.93	26.44	2,752.99	421.48	209.62	470.41	0.00	0.00	0.00	0.00
2,900.00	11.93	26.44	2,850.83	439.99	218.83	491.06	0.00	0.00	0.00	0.00
3,000.00	11.93	26.44	2,948.68	458.49	228.03	511.71	0.00	0.00	0.00	0.00
3,100.00	11.93	26.44	3,046.52	476.99	237.23	532.36	0.00	0.00	0.00	0.00
3,200.00	11.93	26.44	3,144.36	495.50	246.43	553.01	0.00	0.00	0.00	0.00
3,300.00	11.93	26.44	3,242.20	514.00	255.63	573.66	0.00	0.00	0.00	0.00
3,400.00	11.93	26.44	3,340.04	532.50	264.84	594.31	0.00	0.00	0.00	0.00
3,470.00	11.93	26.44	3,408.53	545.45	271.28	608.77	0.00	0.00	0.00	0.00
13.88 Inclination										
3,500.00	11.93	26.44	3,437.88	551.00	274.04	614.96	0.00	0.00	0.00	0.00
3,600.00	11.93	26.44	3,535.73	569.51	283.24	635.61	0.00	0.00	0.00	0.00
3,700.00	11.93	26.44	3,633.57	588.01	292.44	656.27	0.00	0.00	0.00	0.00
3,800.00	11.93	26.44	3,731.41	606.51	301.65	676.92	0.00	0.00	0.00	0.00
3,900.00	11.93	26.44	3,829.25	625.02	310.85	697.57	0.00	0.00	0.00	0.00
4,000.00	11.93	26.44	3,927.09	643.52	320.05	718.22	0.00	0.00	0.00	0.00
4,100.00	11.93	26.44	4,024.93	662.02	329.25	738.87	0.00	0.00	0.00	0.00
4,200.00	11.93	26.44	4,122.77	680.53	338.46	759.52	0.00	0.00	0.00	0.00
4,300.00	11.93	26.44	4,220.62	699.03	347.66	780.17	0.00	0.00	0.00	0.00
4,400.00	11.93	26.44	4,318.46	717.53	356.86	800.82	0.00	0.00	0.00	0.00
4,500.00	11.93	26.44	4,416.30	736.03	366.06	821.47	0.00	0.00	0.00	0.00
4,600.00	11.93	26.44	4,514.14	754.54	375.27	842.12	0.00	0.00	0.00	0.00

Plan Report for BM 35-11A - Plan #1 Proposal

Measured Depth (ft)	Inclination (°)	Azimuth (°)	Vertical Depth (ft)	+N/-S (ft)	+E/-W (ft)	Vertical Section (ft)	Dogleg Rate (°/100ft)	Build Rate (°/100ft)	Turn Rate (°/100ft)	Toolface Azimuth (°)
4,700.00	11.93	26.44	4,611.98	773.04	384.47	862.77	0.00	0.00	0.00	0.00
4,800.00	11.93	26.44	4,709.82	791.54	393.67	883.42	0.00	0.00	0.00	0.00
4,900.00	11.93	26.44	4,807.66	810.05	402.87	904.07	0.00	0.00	0.00	0.00
5,000.00	11.93	26.44	4,905.51	828.55	412.07	924.73	0.00	0.00	0.00	0.00
5,100.00	11.93	26.44	5,003.35	847.05	421.28	945.38	0.00	0.00	0.00	0.00
5,200.00	11.93	26.44	5,101.19	865.55	430.48	966.03	0.00	0.00	0.00	0.00
5,300.00	11.93	26.44	5,199.03	884.06	439.68	986.68	0.00	0.00	0.00	0.00
5,400.00	11.93	26.44	5,296.87	902.56	448.88	1,007.33	0.00	0.00	0.00	0.00
5,500.00	11.93	26.44	5,394.71	921.06	458.09	1,027.98	0.00	0.00	0.00	0.00
5,600.00	11.93	26.44	5,492.55	939.57	467.29	1,048.63	0.00	0.00	0.00	0.00
5,700.00	11.93	26.44	5,590.40	958.07	476.49	1,069.28	0.00	0.00	0.00	0.00
5,800.00	11.93	26.44	5,688.24	976.57	485.69	1,089.93	0.00	0.00	0.00	0.00
5,900.00	11.93	26.44	5,786.08	995.08	494.90	1,110.58	0.00	0.00	0.00	0.00
6,000.00	11.93	26.44	5,883.92	1,013.58	504.10	1,131.23	0.00	0.00	0.00	0.00
6,057.99	11.93	26.44	5,940.66	1,024.31	509.43	1,143.21	0.00	0.00	0.00	0.00
Begin Drop at 6057.99ft										
6,100.00	11.30	26.44	5,981.81	1,031.88	513.20	1,151.66	1.50	-1.50	0.00	180.00
6,200.00	9.80	26.44	6,080.12	1,048.27	521.35	1,169.95	1.50	-1.50	0.00	180.00
6,300.00	8.30	26.44	6,178.87	1,062.34	528.35	1,185.66	1.50	-1.50	0.00	180.00
6,400.00	6.80	26.44	6,278.00	1,074.10	534.20	1,198.78	1.50	-1.50	0.00	180.00
6,440.00	6.20	26.44	6,317.74	1,078.15	536.21	1,203.30	1.50	-1.50	0.00	-180.00
Drop Rate = 1.50°/100ft										
6,500.00	5.30	26.44	6,377.44	1,083.53	538.89	1,209.31	1.50	-1.50	0.00	180.00
6,600.00	3.80	26.44	6,477.13	1,090.63	542.42	1,217.23	1.50	-1.50	0.00	180.00
6,700.00	2.30	26.44	6,576.98	1,095.38	544.78	1,222.54	1.50	-1.50	0.00	180.00
6,800.00	0.80	26.44	6,676.94	1,097.80	545.99	1,225.23	1.50	-1.50	0.00	180.00
6,852.90	0.00	26.42	6,729.85	1,098.13	546.15	1,225.60	1.50	-1.50	-0.04	-180.00
BM 35-11A Plan #1 Zone Tgt										
6,853.06	0.00	0.00	6,730.00	1,098.13	546.15	1,225.60	1.50	-1.50	-17,083.50	-179.98
End Drop at 6853.06ft - Williams Fork - BM 35-11A Plan #1 Driller's Tgt										
6,900.00	0.03	269.99	6,776.94	1,098.13	546.14	1,225.59	0.07	0.07	-191.74	-90.01
7,000.00	0.10	269.99	6,876.94	1,098.13	546.02	1,225.54	0.07	0.07	0.00	0.00
7,100.00	0.17	269.99	6,976.94	1,098.13	545.78	1,225.45	0.07	0.07	0.00	0.00
7,200.00	0.24	269.99	7,076.94	1,098.13	545.41	1,225.30	0.07	0.07	0.00	0.00
7,300.00	0.31	269.99	7,176.94	1,098.13	544.93	1,225.10	0.07	0.07	0.00	0.00
7,400.00	0.38	269.99	7,276.94	1,098.13	544.32	1,224.85	0.07	0.07	0.00	0.00
7,500.00	0.45	269.99	7,376.93	1,098.13	543.59	1,224.55	0.07	0.07	0.00	0.00
7,600.00	0.52	269.99	7,476.93	1,098.13	542.74	1,224.20	0.07	0.07	0.00	0.00
7,700.00	0.59	269.99	7,576.93	1,098.13	541.77	1,223.79	0.07	0.07	0.00	0.00
7,800.00	0.66	269.99	7,676.92	1,098.13	540.67	1,223.34	0.07	0.07	0.00	0.00
7,835.08	0.69	269.99	7,712.00	1,098.13	540.26	1,223.17	0.07	0.07	0.00	0.00
Top of Gas										
7,900.00	0.73	269.99	7,776.91	1,098.13	539.45	1,222.84	0.07	0.07	0.00	0.00
8,000.00	0.80	269.99	7,876.90	1,098.13	538.11	1,222.29	0.07	0.07	0.00	0.00
8,100.00	0.87	269.99	7,976.89	1,098.13	536.65	1,221.69	0.07	0.07	0.00	0.00
8,200.00	0.94	269.99	8,076.88	1,098.13	535.07	1,221.04	0.07	0.07	0.00	0.00
8,300.00	1.01	269.99	8,176.87	1,098.13	533.36	1,220.33	0.07	0.07	0.00	0.00
8,400.00	1.08	269.99	8,276.85	1,098.13	531.53	1,219.58	0.07	0.07	0.00	0.00
8,500.00	1.15	269.99	8,376.83	1,098.13	529.58	1,218.78	0.07	0.07	0.00	0.00
8,600.00	1.22	269.99	8,476.81	1,098.13	527.51	1,217.92	0.07	0.07	0.00	0.00
8,700.00	1.29	269.99	8,576.78	1,098.13	525.31	1,217.02	0.07	0.07	0.00	0.00
8,800.00	1.36	269.99	8,676.76	1,098.13	523.00	1,216.06	0.07	0.07	0.00	0.00
8,873.02	1.41	269.99	8,749.76	1,098.13	521.23	1,215.34	0.07	0.07	0.00	0.00
8,900.00	1.40	269.99	8,776.73	1,098.13	520.57	1,215.06	0.07	-0.07	0.00	180.00
9,000.00	1.33	269.99	8,876.70	1,098.13	518.19	1,214.08	0.07	-0.07	0.00	180.00
9,100.00	1.26	269.99	8,976.67	1,098.13	515.94	1,213.16	0.07	-0.07	0.00	180.00
9,200.00	1.19	269.99	9,076.65	1,098.13	513.81	1,212.28	0.07	-0.07	0.00	180.00
9,300.00	1.12	269.99	9,176.63	1,098.13	511.80	1,211.45	0.07	-0.07	0.00	180.00
9,396.39	1.05	269.99	9,273.00	1,098.13	509.97	1,210.70	0.07	-0.07	0.00	180.00

Plan Report for BM 35-11A - Plan #1 Proposal

Measured Depth (ft)	Inclination (°)	Azimuth (°)	Vertical Depth (ft)	+N/-S (ft)	+E/-W (ft)	Vertical Section (ft)	Dogleg Rate (°/100ft)	Build Rate (°/100ft)	Turn Rate (°/100ft)	Toolface Azimuth (°)
Cameo										
9,400.00	1.05	269.99	9,276.61	1,098.13	509.91	1,210.67	0.07	-0.07	0.00	-180.00
9,500.00	0.98	269.99	9,376.60	1,098.13	508.14	1,209.95	0.07	-0.07	0.00	180.00
9,600.00	0.91	269.99	9,476.58	1,098.13	506.50	1,209.27	0.07	-0.07	0.00	180.00
9,700.00	0.84	269.99	9,576.57	1,098.13	504.97	1,208.64	0.07	-0.07	0.00	180.00
9,769.43	0.79	269.99	9,646.00	1,098.13	503.98	1,208.23	0.07	-0.07	0.00	-180.00
Rollins										
9,800.00	0.77	269.99	9,676.56	1,098.13	503.57	1,208.06	0.07	-0.07	0.00	180.00
9,900.00	0.70	269.99	9,776.55	1,098.13	502.29	1,207.54	0.07	-0.07	0.00	180.00
10,000.00	0.63	269.99	9,876.55	1,098.13	501.13	1,207.06	0.07	-0.07	0.00	180.00
10,100.00	0.56	269.99	9,976.54	1,098.13	500.09	1,206.63	0.07	-0.07	0.00	180.00
10,117.46	0.55	269.99	9,994.00	1,098.13	499.92	1,206.56	0.07	-0.07	0.00	180.00
Cozzette										
10,200.00	0.49	269.99	10,076.54	1,098.13	499.17	1,206.25	0.07	-0.07	0.00	-180.00
10,300.00	0.42	269.99	10,176.53	1,098.13	498.37	1,205.92	0.07	-0.07	0.00	180.00
10,400.00	0.35	269.99	10,276.53	1,098.13	497.70	1,205.65	0.07	-0.07	0.00	180.00
10,414.47	0.34	269.99	10,291.00	1,098.13	497.61	1,205.61	0.07	-0.07	0.00	-180.00
Corcora										
10,500.00	0.28	269.99	10,376.53	1,098.13	497.15	1,205.42	0.07	-0.07	0.00	180.00
10,600.00	0.21	269.99	10,476.53	1,098.13	496.72	1,205.24	0.07	-0.07	0.00	180.00
10,655.47	0.17	269.99	10,532.00	1,098.13	496.53	1,205.16	0.07	-0.07	0.00	180.00
Mancos										
10,700.00	0.14	269.99	10,576.53	1,098.13	496.41	1,205.11	0.07	-0.07	0.00	-180.00
10,800.00	0.07	269.99	10,676.53	1,098.13	496.22	1,205.04	0.07	-0.07	0.00	180.00
10,900.00	0.00	269.99	10,776.53	1,098.13	496.15	1,205.01	0.07	-0.07	0.00	-180.00
10,905.47	0.00	0.00	10,782.00	1,098.13	496.15	1,205.01	0.07	-0.07	1,645.43	179.98

Total Depth = 10905.47ft - BM 35-11A Plan #1 BH Tgt

Plan Annotations

Measured Depth (ft)	Vertical Depth (ft)	Local Coordinates		Comment
		+N/-S (ft)	+E/-W (ft)	
225.00	225.00	0.00	0.00	Kickoff at 225.00ft
325.00	324.98	1.56	0.78	Build Rate = 2.00°/100ft
821.31	817.01	55.37	27.54	End Build at 821.31ft
3,470.00	3,408.53	545.45	271.28	13.88 Inclination
6,057.99	5,940.66	1,024.31	509.43	Begin Drop at 6057.99ft
6,440.00	6,317.74	1,078.15	536.21	Drop Rate = 1.50°/100ft
6,853.06	6,730.00	1,098.13	546.15	End Drop at 6853.06ft
10,905.47	10,782.00	1,098.13	496.15	Total Depth = 10905.47ft

Vertical Section Information

Angle Type	Target	Azimuth (°)	Origin Type	Origin		Start TVD (ft)
				+N/-S (ft)	+E/-W (ft)	
Target	BM 35-11A Plan #1 BH Tgt	24.31	Slot	0.00	0.00	0.00

Survey tool program

From (ft)	To (ft)	Survey/Plan	Survey Tool
0.00	10,905.47	Plan #1 Proposal	MWD

Plan Report for BM 35-11A - Plan #1 Proposal**Casing Details**

Measured Depth (ft)	Vertical Depth (ft)	Name	Casing Diameter (")	Hole Diameter (")
2,380.00	2,342.06	8 5/8" Casing Pt.	8-5/8	11

Formation Details

Measured Depth (ft)	Vertical Depth (ft)	Name	Lithology	Dip (°)	Dip Direction (°)
6,853.06	6,730.00	Williams Fork		0.00	
7,835.08	7,712.00	Top of Gas		0.00	
9,396.39	9,273.00	Cameo		0.00	
9,769.43	9,646.00	Rollins		0.00	
10,117.46	9,994.00	Cozzette		0.00	
10,414.47	10,291.00	Corcora		0.00	
10,655.47	10,532.00	Mancos		0.00	

Targets associated with this wellbore

Target Name	TVD (ft)	+N/-S (ft)	+E/-W (ft)	Shape
BM 35-11A Plan #1 Driller's Tgt	6,730.00	1,098.13	546.15	Rectangle
BM 35-11A 100' FNL Hardline Tgt	0.00	0.00	0.00	Polygon
BM 35-11A Plan #1 BH Tgt	10,782.00	1,098.13	496.15	Point
BM 35-11A Plan #1 Zone Tgt	6,730.00	1,098.13	496.15	Rectangle

North Reference Sheet for Sec. 35-T7S-R95W (SGV 35D2 PAD) - BM 35-11A - Wellbore #1

All data is in US Feet unless otherwise stated. Directions and Coordinates are relative to Grid North Reference.

Vertical Depths are relative to RKB - 24' @ 8870.00ft. Northing and Easting are relative to BM 35-11A - Slot A 3

Coordinate System is US State Plane 1927 (Exact solution), Colorado Central 502 using datum NAD 1927 (NADCON CONUS), ellipsoid Clarke 1866

Projection method is Lambert Conformal Conic (2 parallel)

Central Meridian is -105.50°, Longitude Origin: 0° 0' 0.000 E°, Latitude Origin: 39° 45' 0.000 N°

False Easting: 2,000,000.00ft, False Northing: 0.00ft, Scale Reduction: 0.99994927

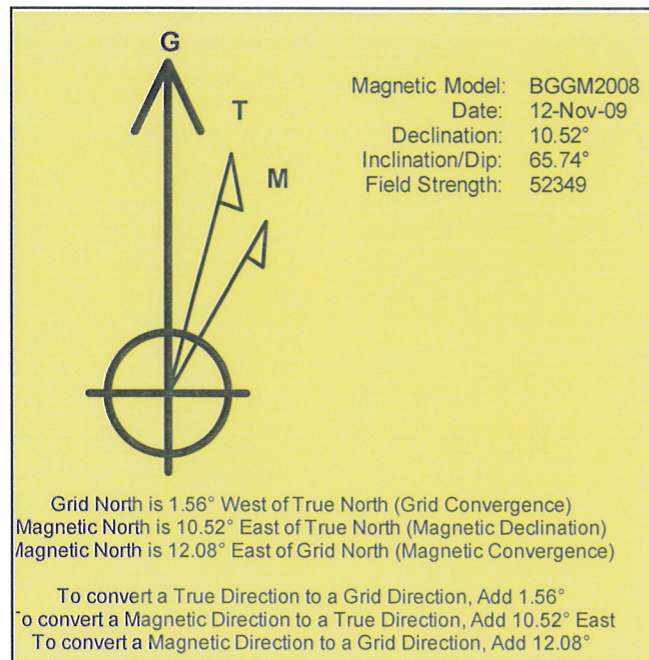
Grid Coordinates of Well: 579,181.93 ft N, 1,301,241.28 ft E

Geographical Coordinates of Well: 39° 23' 51.13" N, 107° 58' 22.40" W

Grid Convergence at Surface is: -1.56°

Based upon Minimum Curvature type calculations, at a Measured Depth of 10,905.47ft
the Bottom Hole Displacement is 1,205.01ft in the Direction of 24.31° (Grid).

Magnetic Convergence at surface is: -12.08° (12 November 2009, , BGGM2008)



Project: Garfield County, CO
Site: Sec. 35-T7S-R95W (SGV 35D2 PAD)
Well: BM 35-11A
Wellbore: Wellbore #1
Plan: Plan #1 Proposal

Noble Energy (Rockies)

HALLIBURTON

SECTION DETAILS

MD	Inc	Azi	TVD	+N/-S	+E/-W	DLeg	TFace	VSec
0.00	0.00	0.00	0.00	0.00	0.00	0.00	0.00	0.00
225.00	0.00	0.00	225.00	0.00	0.00	0.00	0.00	0.00
821.31	11.93	26.44	817.01	55.37	27.54	2.00	26.44	61.79
6057.99	11.93	26.44	5940.66	1024.31	509.43	0.00	0.00	1143.21
6853.06	0.00	0.00	6730.00	1098.13	546.15	1.50	180.00	1225.60
8873.02	1.41	269.99	8749.76	1098.13	521.23	0.07	269.99	1215.34
10905.47	0.00	360.00	10782.00	1098.13	496.15	0.07	180.00	1205.01

BM 35-11A Plan #1 Driller's Tgt

BM 35-11A Plan #1 BH Tgt

WELL DETAILS: BM 35-11A

Ground Level:	8846.00	Latitude	39° 23' 51.128 N	Longitude	107° 58' 22.404 W	A 3
Northing	579181.93	Easting	1301241.28			

WELLBORE TARGET DETAILS

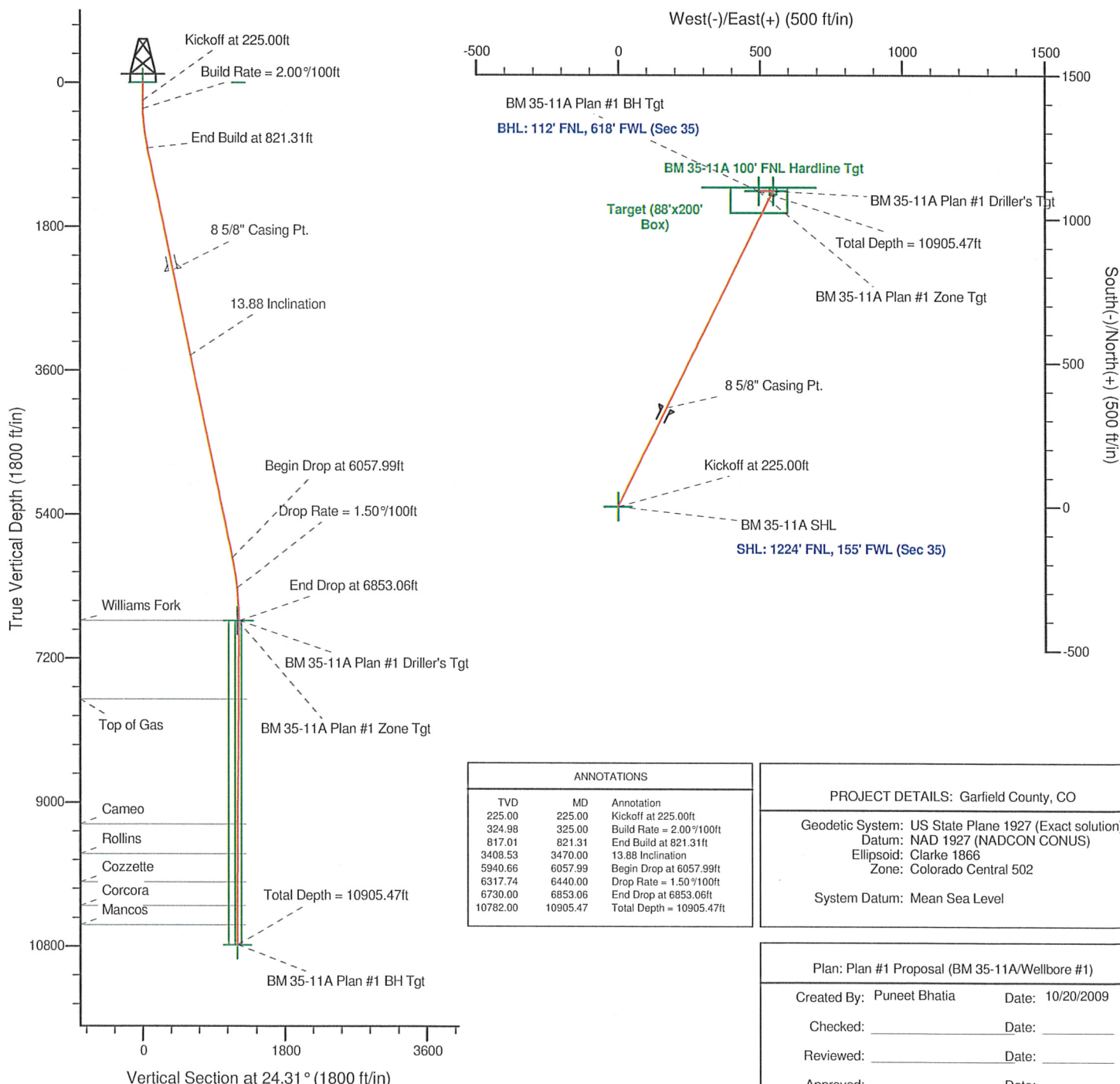
Name	TVD	+N/-S	+E/-W	Shape
BM 35-11A 100' FNL Hardline Tgt	0.00	0.00	0.00	Polygon
BM 35-11A Plan #1 Driller's Tgt	6730.00	1098.13	546.15	Rectangle (Sides: L25.00 W25.00)
BM 35-11A Plan #1 Zone Tgt	6730.00	1098.13	496.15	Rectangle (Sides: L88.00 W200.00)
BM 35-11A Plan #1 BH Tgt	10782.00	1098.13	496.15	Point



Azimuths to Grid North
True North: 1.56°
Magnetic North: 12.08°
Magnetic Field
Strength: 52348.8snT
Dip Angle: 65.74°
Date: 11/12/2009
Model: BGGM2008

FORMATION TOP DETAILS

TVDPath	MDPath	Formation
6730.00	6853.06	Williams Fork
7712.00	7835.08	Top of Gas
9273.00	9396.39	Cameo
9646.00	9769.43	Rollins
9994.00	10117.46	Cozzette
10291.00	10414.47	Corcora
10532.00	10655.47	Mancos



ANNOTATIONS

TVD	MD	Annotation
225.00	225.00	Kickoff at 225.00ft
324.98	325.00	Build Rate = 2.00%/100ft
817.01	821.31	End Build at 821.31ft
3408.53	3470.00	13.88 Incline
5940.66	6057.99	Begin Drop at 6057.99ft
6317.74	6440.00	Drop Rate = 1.50%/100ft
6730.00	6853.06	End Drop at 6853.06ft
10782.00	10905.47	Total Depth = 10905.47ft

PROJECT DETAILS: Garfield County, CO

Geodetic System: US State Plane 1927 (Exact solution)
Datum: NAD 1927 (NADCON CONUS)
Ellipsoid: Clarke 1866
Zone: Colorado Central 502
System Datum: Mean Sea Level

Plan: Plan #1 Proposal (BM 35-11A/Wellbore #1)

Created By: Puneet Bhatia Date: 10/20/2009

Checked: _____ Date: _____

Reviewed: _____ Date: _____

Approved: _____ Date: _____