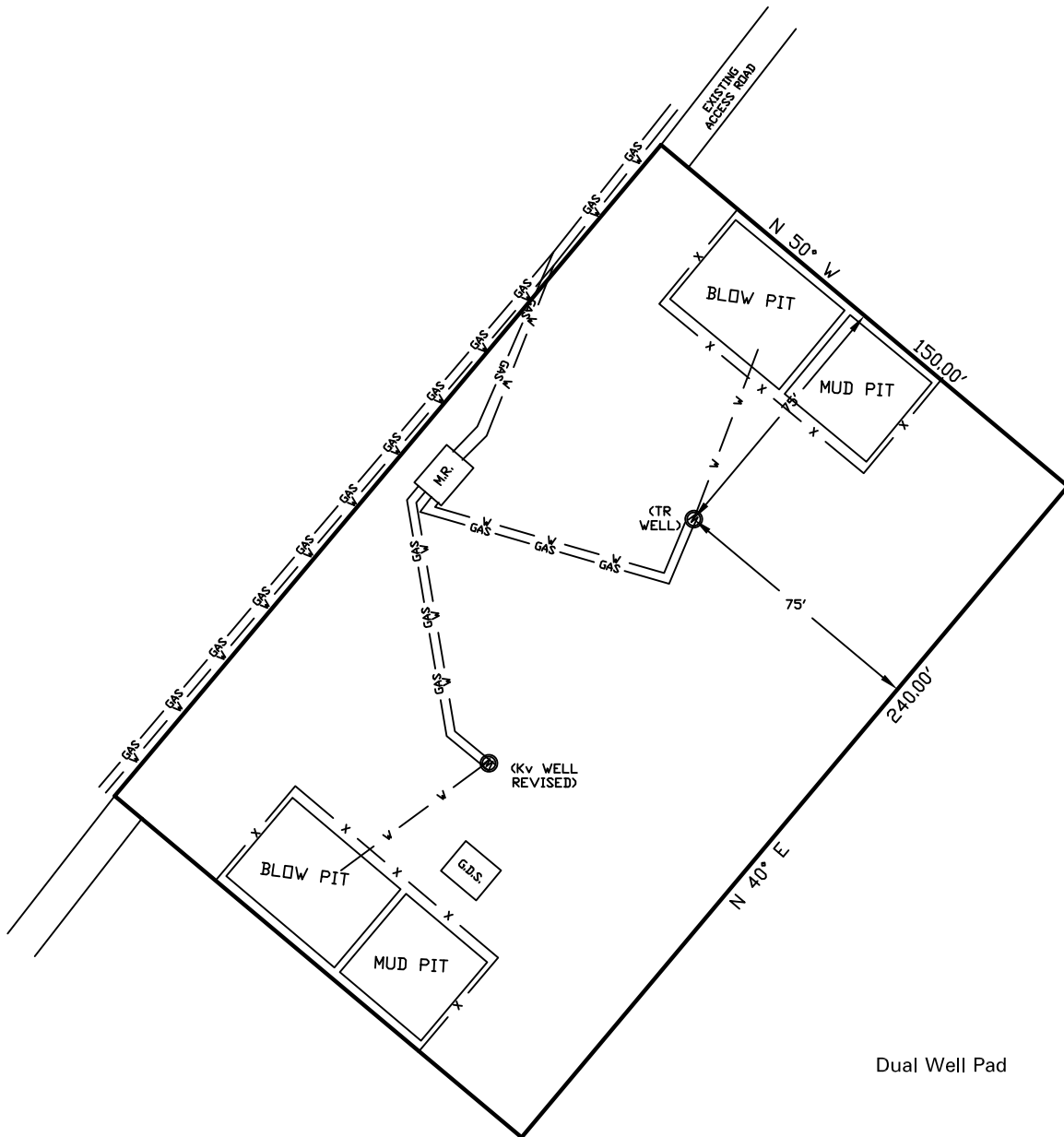


# WELLSITE/PRODUCTION EQUIPMENT LAYOUT

OPERATOR: Pioneer Natural Resources

WELL NAME: Superman 11-4 (Revised)

NWNW of SECTION 4 TOWNSHIP 32 S, RANGE 66 W OF THE 6TH P.M., IN LAS ANIMAS COUNTY



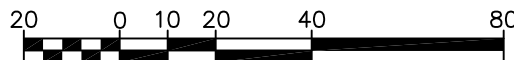
Dual Well Pad

## NOTE:

MUD AND BLOW PITS WILL BE CONVERTED TO UNLINED EVAPORATION PITS FOR PRODUCTION.

WELLHEADS ARE TYPICALLY PCP DRIVE HEADS

## GRAPHIC SCALE



( IN FEET )

1 inch = 40 ft.

## LEGEND:



= WELLHEAD

— = EXISTING WELLPAD

— = FENCE (4 STRAND)

— = 4" GAS GATHERING LINE

— = 2" WATER LINE

M.R. = COMBO METER RUN AND WATER/GAS SEPARATOR

G.D.S. = GAS DRIVE SYSTEM

August 20, 2008

Date Plotted

SHIELDS SURVEY L<sup>td</sup>. C<sup>o</sup>.  
Raton, New Mexico 87740  
(505)445-1232