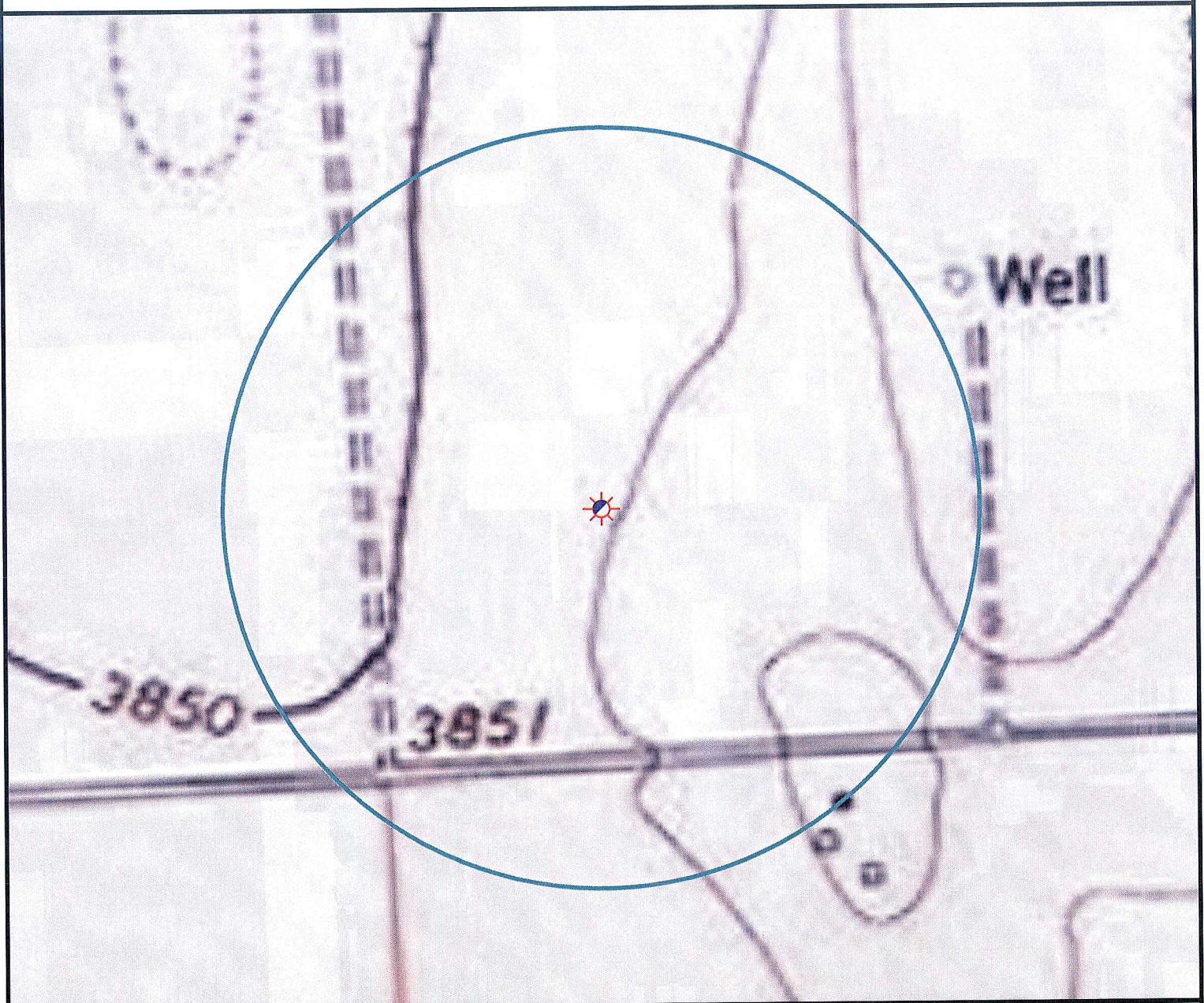


Hydrology Map



There are no surface waters within the 1000' radius of the Oil & Gas location.



0 200 400 800 Feet

Legend

- | | | | |
|--|----------------------|--|-----------------------|
| | Proposed Well | | Building/Residence |
| | Existing Well | | Oil & Gas Equipment |
| | Water Well | | Water Body |
| | Pedestal | | Utility Box |
| | CattleGuard/Gate | | Railroad |
| | Bridge | | Fence |
| | ECD | | Overhead Power Line |
| | 1000' Radius | | Pipeline |
| | Facilities Enclosure | | Access Road |
| | | | Intermittent Stream |
| | | | Concrete Walled Ditch |

1000' Radius Map of Surface Waters and Riparian Areas

BRUEGGEMAN 26-13

Surface Location: T1S R44W S26

Field Date: 11/06/2009
 Drawing Date: 11/24/2009
 Drafter: CGR
 Checked By: MPS
 Revision: 1

Prepared for:
 ROSETTA RESOURCES
 OPERATING LP
 717 Texas Avenue, Ste. 2800
 Houston, TX 77002



Use our resources to find yours!
www.petro-fs.com

1801 W. 13th Ave Suite 207
 Denver, CO 80204
 (303) 928-7128
 111 E. Third Street
 Rifle, CO 81650
 (970) 625-4740