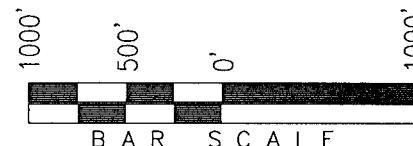


**T1S, R97W, 6th P.M.**

**Exxon Mobil Corporation**

WELL LOCATION, FREEDOM UNIT 197-31B6,  
LOCATED AS SHOWN IN THE NE 1/4 SW 1/4  
(LOT 15) OF SECTION 31, T1S, R97W, 6th P.M.,  
RIO BLANCO COUNTY, COLORADO.



◆ = SECTION CORNERS LOCATED

**BASIS OF BEARINGS & BASIS OF ELEVATION**

BASIS OF BEARINGS IS A LINE BETWEEN MAGNOLIA & MEYERS TRIANGULATION STATION GRID COORDINATES WHICH IS ASSUMED TO BEAR S82°36'07"E.

BASIS OF ELEVATION IS MAGNOLIA TRIANGULATION STATION LOCATED IN THE NW 1/4 OF SECTION 9, T2S, R96W, 6th P.M. REPORTED FROM THE NATIONAL GEODETIC SURVEY (NAVD 88). ELEVATION IS REPORTED AS BEING 7529 FEET.

**NOTES:**

1. Well footages are measured at right angles to the Section Lines.
2. Bearings are based on Global Positioning Satellite observations.
3. G.P.S. Operator: D. PETTY, (PDOP) = 2.8

THIS IS TO CERTIFY THAT THE ABOVE PLAT WAS PREPARED FROM FIELD NOTES OF ACTUAL SURVEY MADE BY ME, OR UNDER MY SUPERVISION AND THAT THE SAME ARE TRUE AND CORRECT TO THE BEST OF MY KNOWLEDGE AND BELIEF.

# 30125

REGISTERED LAND SURVEYOR  
REGISTRATION NO. 11301  
STATE OF COLORADO

**TRI STATE LAND SURVEYING & CONSULTING**

180 NORTH VERNAL AVE. - VERNAL, UTAH 84078  
(435) 781-2501

DATE SURVEYED:  
01-17-06

SURVEYED BY: D.P.

DATE DRAWN:  
02-07-06

DRAWN BY: D.COX

REVISED:  
02-13-07

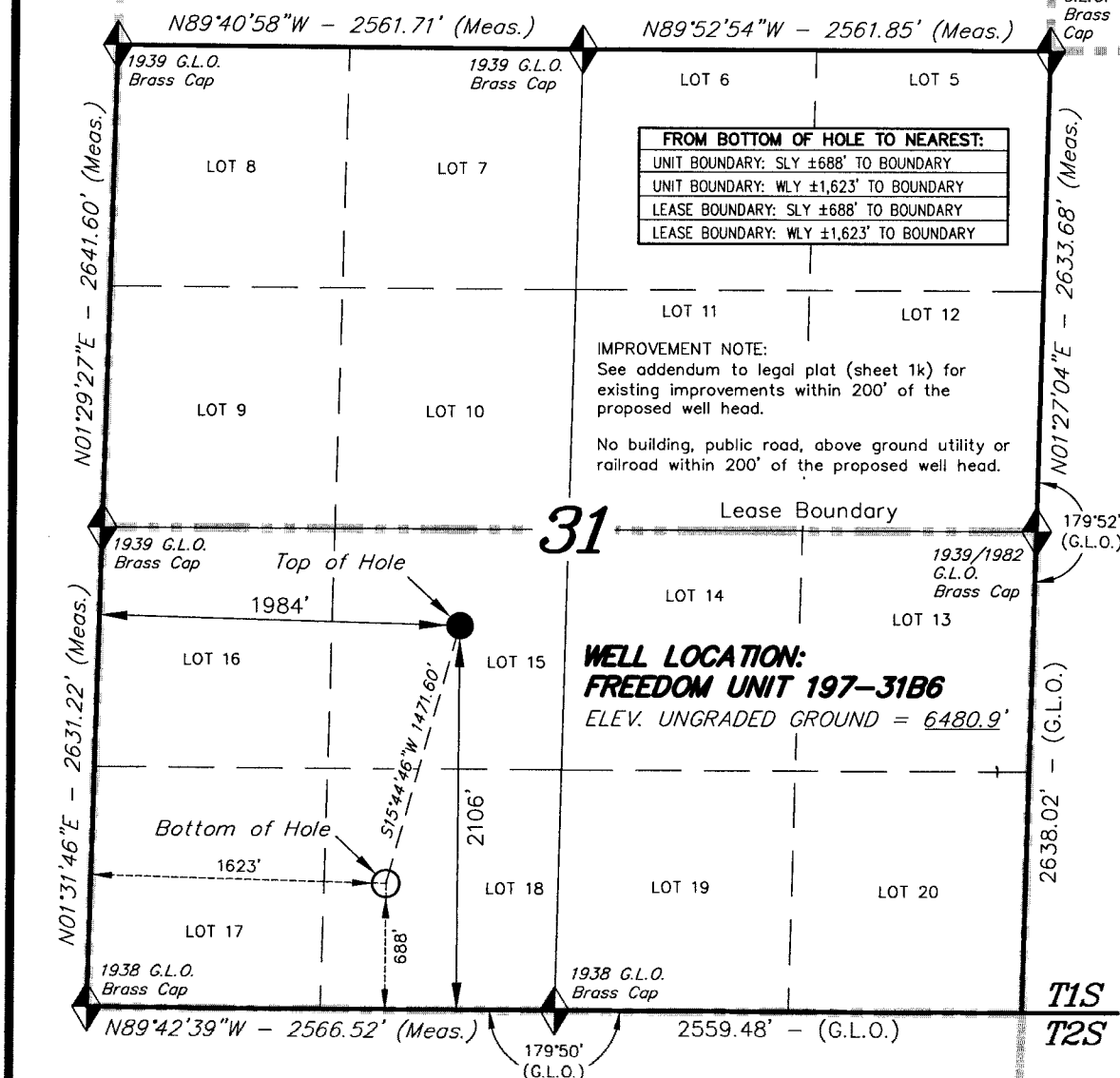
SCALE: 1" = 1000'

**SHEET**

**1f**

**OF 8**

CO-NORTH NAD 83 (SURFACE LOCATION)		CO-NORTH NAD 83 (BOTTOM HOLE)		FROM SURFACE LOCATION TO NEAREST:	
LATITUDE = 39°55'06.18" (39.918384)		LATITUDE = 39°54'52.07" (39.914464)		TOWN/COMMUNITY: NE 19.3 MILES TO MEEKER	
LONGITUDE = 108°19'33.65" (108.326013)		LONGITUDE = 108°19'38.19" (108.327274)		UNIT BOUNDARY: SLY ±2,106' TO BOUNDARY	
STATE PLANE COORDINATES		STATE PLANE COORDINATES		UNIT BOUNDARY: WLY ±1,984' TO BOUNDARY	
N: = 1225746.119	E: = 2207469.068	N: = 1224330.246	E: = 2207069.855	LEASE BOUNDARY: NLY ±530' TO BOUNDARY	
CO-NORTH NAD 27 (SURFACE LOCATION)		CO-NORTH NAD 27 (BOTTOM HOLE)		LEASE BOUNDARY: WLY ±1,984' TO BOUNDARY	
LATITUDE = 39°55'06.28" (39.918411)		LATITUDE = 39°54'52.17" (39.914492)		EXISTING WELL: SELY ±4,817' TO F24X-32G	
LONGITUDE = 108°19'31.33" (108.325369)		LONGITUDE = 108°19'35.87" (108.326630)			
STATE PLANE COORDINATES		STATE PLANE COORDINATES			
N: = 225746.863	E: = 1207629.203	N: = 224331.000	E: = 1207230.000		



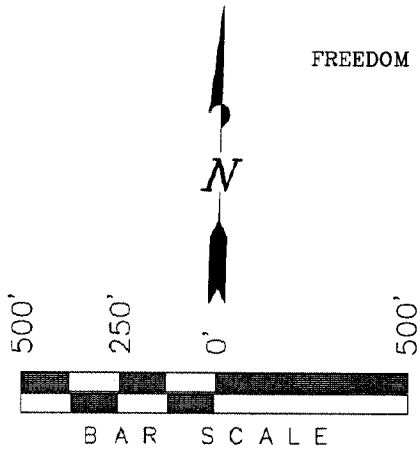
# Exxon Mobil Corporation

## ADDENDUM TO LEGAL PLATS FOR

WELL PAD (FREEDOM CREEK UNIT 197-31B)  
FREEDOM CREEK UNIT 197-31B1, B2, B3, B4, B5, B6, B7, B8, B9 & B10  
Section 31, T1S, R97W, 6th P.M.

### Distances from Well Heads

WELL	BUILDING	ABOVE GROUND UTILITY	PUBLIC ROAD	RAILROAD
B1	S90°E 7557'	N07°E 2515.21'	S18°W 1734.80'	S28°E 35 Miles
B2	S90°E 7557'	N07°E 2500.25'	S18°W 1748.36'	S28°E 35 Miles
B3	S90°E 7557'	N07°E 2485.29'	S18°W 1761.93'	S28°E 35 Miles
B4	S90°E 7557'	N07°E 2470.33'	S18°W 1775.49'	S28°E 35 Miles
B5	S90°E 7557'	N07°E 2457.60'	S18°W 1789.05'	S28°E 35 Miles
B6	S90°E 7557'	N07°E 2460.79'	S18°W 1752.92'	S28°E 35 Miles
B7	S90°E 7557'	N07°E 2475.75'	S18°W 1766.48'	S28°E 35 Miles
B8	S90°E 7557'	N07°E 2490.70'	S18°W 1780.04'	S28°E 35 Miles
B9	S90°E 7557'	N07°E 2505.66'	S18°W 1793.61'	S28°E 35 Miles
B10	S90°E 7557'	N07°E 2445.83'	S18°W 1807.17'	S28°E 35 Miles



LOT 9

LOT 10

LOT 11

Proposed Road

Sec 31

PROPOSED PAD  
FRU 197-31B

400' OFFSET FROM  
DISTURBANCE

LOT 16

LOT 14

LOT 15

Boundary of  
Proposed Surface  
Disturbance

Proposed  
Pipeline  
(Typ.)

LOT 17

Existing Road

LOT 18

LOT 19

SURFACE USE NOTE:  
Surface use of the well site  
is grazing. Vegetation  
consists mainly of Pinion &  
Juniper Trees, Cactus,  
Sagebrush & Native Grasses.

SURVEYED BY: D.P. SURVEY DATE: 01-17-06  
DRAWN BY: F.T.M. DATE DRAWN: 09-23-09  
SCALE: 1" = 500' REVISED: F.T.M. 09-23-09

Tri State  
Land Surveying, Inc.  
180 NORTH VERNAL AVE. VERNAL, UTAH 84078  
(435) 781-2501

SHEET  
2k  
OF 12

**Exxon Mobil Corporation**  
Freedom Unit 197-31B  
Section 31, T1S, R97W, 6<sup>th</sup> P.M.

Beginning at the city of Rifle, Colorado, proceed north on Colorado Highway #13 for approximately 18.8 miles to the junction of Rio Blanco County Road #5. Turn west on CR 5 for approximately 26.9 miles to the junction of Rio Blanco CR #24. Proceed west on CR #24 for approximately 1.9 miles to CR #31. Turn northwest on CR #31 for 2.3 miles to the junction of CR #83. Turn northeast on CR #83 for 0.2 miles to the existing access road to FRU 197-31A. Proceed (north-northeast) on FRU 197-31A access road for approximately 1.2 miles. Turn south along ridge approximately 2,332' to the new wellpad. Flagging/stakes have been set to define route to the FRU 197-31B wellpad.