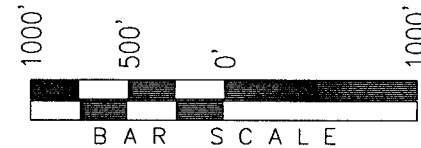


T1S, R97W, 6th P.M.

Exxon Mobil Corporation

WELL LOCATION, FREEDOM UNIT 197-31B8,
LOCATED AS SHOWN IN THE NE 1/4 SW 1/4
(LOT 15) OF SECTION 31, T1S, R97W, 6th P.M.,
RIO BLANCO COUNTY, COLORADO.



◆ = SECTION CORNERS LOCATED

BASIS OF BEARINGS & BASIS OF ELEVATION

BASIS OF BEARINGS IS A LINE BETWEEN MAGNOLIA & MEYERS TRIANGULATION
STATION GRID COORDINATES WHICH IS ASSUMED TO BEAR S82°36'07"E.

BASIS OF ELEVATION IS MAGNOLIA TRIANGULATION STATION LOCATED IN THE
NW 1/4 OF SECTION 9, T2S, R96W, 6th P.M. REPORTED FROM THE NATIONAL
GEODETIC SURVEY (NAVD 88). ELEVATION IS REPORTED AS BEING 7529 FEET.

NOTES:

1. Well footages are measured at right angles to the Section Lines.
2. Bearings are based on Global Positioning Satellite observations.
3. G.P.S. Operator: D. PETTY, (PDOP) = 2.8

THIS IS TO CERTIFY THAT THE ABOVE SURVEY WAS PREPARED
FROM FIELD NOTES OF ACTUAL SURVEY MADE BY ME, OR
UNDER MY SUPERVISION AND THAT THE SAME ARE TRUE
AND CORRECT TO THE BEST OF MY KNOWLEDGE AND BELIEF.

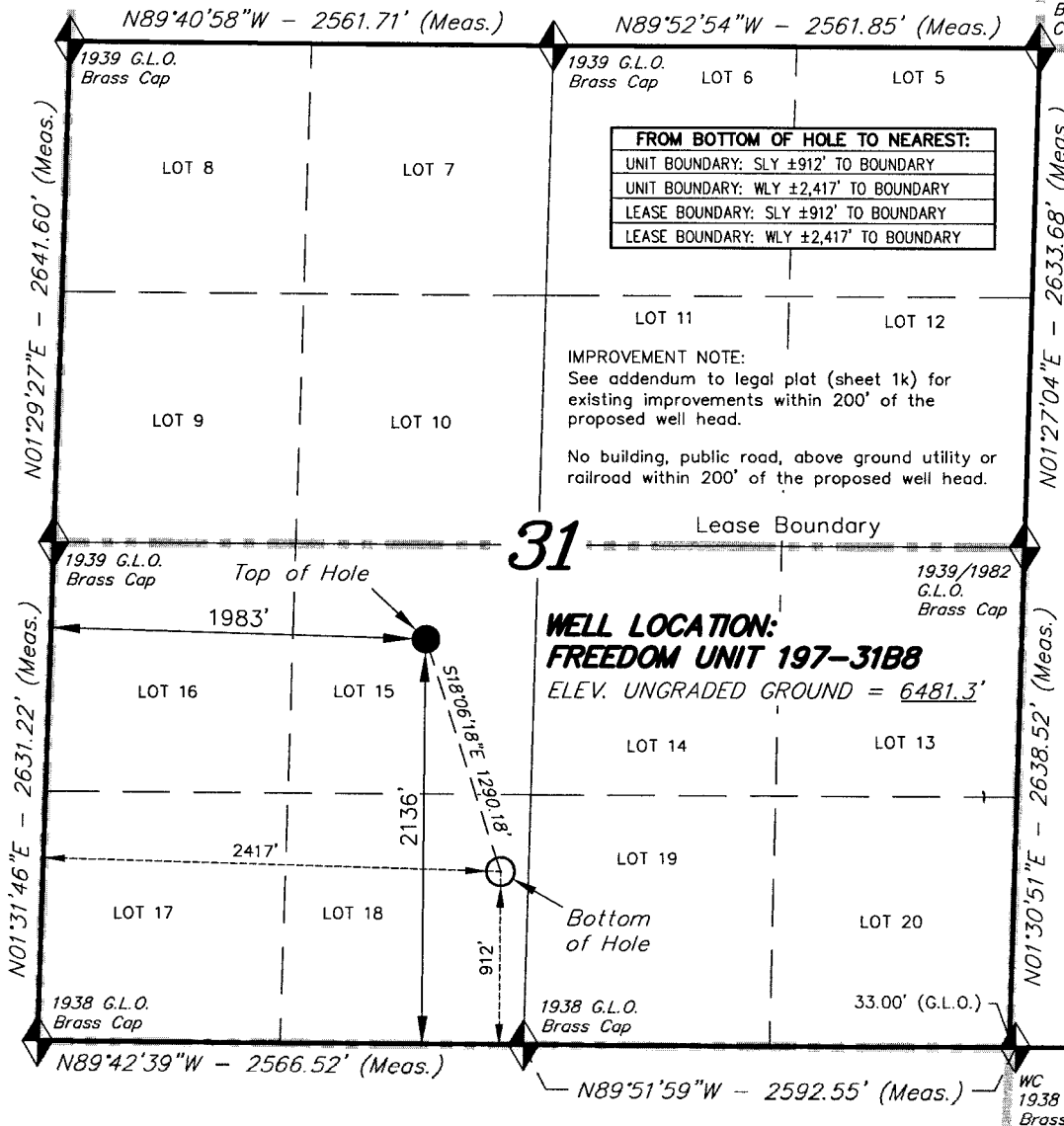
30125

REGISTERED LAND SURVEYOR
REGISTRATION NO. 11301
STATE OF COLORADO

TRI STATE LAND SURVEYING & CONSULTING

180 NORTH VERNAL AVE. - VERNAL, UTAH 84078
(435) 781-2501

DATE SURVEYED: 01-17-06	SURVEYED BY: D.P.	SHEET 1h OF 8
DATE DRAWN: 02-07-06	DRAWN BY: D.COX	
REVISED: 02-13-07	SCALE: 1" = 1000'	



CO-NORTH NAD 83 (SURFACE LOCATION)	CO-NORTH NAD 83 (BOTTOM HOLE)	FROM SURFACE LOCATION TO NEAREST:
LATITUDE = 39°55'06.48" (39.918466)	LATITUDE = 39°54'54.50" (39.915138)	TOWN/COMMUNITY: NE 19.3 MILES TO MEEKER
LONGITUDE = 108°19'33.66" (108.326016)	LONGITUDE = 108°19'28.02" (108.324449)	UNIT BOUNDARY: SLY ±2,136' TO BOUNDARY
STATE PLANE COORDINATES	STATE PLANE COORDINATES	UNIT BOUNDARY: WLY ±1,983' TO BOUNDARY
N: = 1225776.109 E: = 2207469.068	N: = 1224550.241 E: = 2207869.865	LEASE BOUNDARY: NLY ±500' TO BOUNDARY
CO-NORTH NAD 27 (SURFACE LOCATION)	CO-NORTH NAD 27 (BOTTOM HOLE)	LEASE BOUNDARY: WLY ±1,983' TO BOUNDARY
LATITUDE = 39°55'06.58" (39.918494)	LATITUDE = 39°54'54.60" (39.915165)	EXISTING WELL: SELY ±4,822' TO F24X-32G
LONGITUDE = 108°19'31.34" (108.325372)	LONGITUDE = 108°19'25.70" (108.323805)	
STATE PLANE COORDINATES	STATE PLANE COORDINATES	
N: = 225776.852 E: = 1207629.203	N: = 224551.000 E: = 1208030.000	

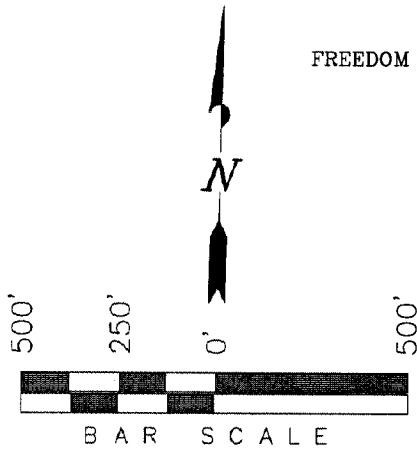
Exxon Mobil Corporation

ADDENDUM TO LEGAL PLATS FOR

WELL PAD (FREEDOM CREEK UNIT 197-31B)
FREEDOM CREEK UNIT 197-31B1, B2, B3, B4, B5, B6, B7, B8, B9 & B10
Section 31, T1S, R97W, 6th P.M.

Distances from Well Heads

WELL	BUILDING	ABOVE GROUND UTILITY	PUBLIC ROAD	RAILROAD
B1	S90°E 7557'	N07°E 2515.21'	S18°W 1734.80'	S28°E 35 Miles
B2	S90°E 7557'	N07°E 2500.25'	S18°W 1748.36'	S28°E 35 Miles
B3	S90°E 7557'	N07°E 2485.29'	S18°W 1761.93'	S28°E 35 Miles
B4	S90°E 7557'	N07°E 2470.33'	S18°W 1775.49'	S28°E 35 Miles
B5	S90°E 7557'	N07°E 2457.60'	S18°W 1789.05'	S28°E 35 Miles
B6	S90°E 7557'	N07°E 2460.79'	S18°W 1752.92'	S28°E 35 Miles
B7	S90°E 7557'	N07°E 2475.75'	S18°W 1766.48'	S28°E 35 Miles
B8	S90°E 7557'	N07°E 2490.70'	S18°W 1780.04'	S28°E 35 Miles
B9	S90°E 7557'	N07°E 2505.66'	S18°W 1793.61'	S28°E 35 Miles
B10	S90°E 7557'	N07°E 2445.83'	S18°W 1807.17'	S28°E 35 Miles



LOT 9

LOT 10

LOT 11

Proposed Road

Sec 31

PROPOSED PAD
FRU 197-31B

400' OFFSET FROM
DISTURBANCE

LOT 16

LOT 14

LOT 15

Boundary of
Proposed Surface
Disturbance

Proposed
Pipeline
(Typ.)

LOT 17

Existing Road

LOT 18

LOT 19

SURFACE USE NOTE:
Surface use of the well site
is grazing. Vegetation
consists mainly of Pinion &
Juniper Trees, Cactus,
Sagebrush & Native Grasses.

SURVEYED BY: D.P. SURVEY DATE: 01-17-06
DRAWN BY: F.T.M. DATE DRAWN: 09-23-09
SCALE: 1" = 500' REVISED: F.T.M. 09-23-09

Tri State
Land Surveying, Inc.
180 NORTH VERNAL AVE. VERNAL, UTAH 84078
(435) 781-2501

SHEET
2k
OF 12

Exxon Mobil Corporation
Freedom Unit 197-31B
Section 31, T1S, R97W, 6th P.M.

Beginning at the city of Rifle, Colorado, proceed north on Colorado Highway #13 for approximately 18.8 miles to the junction of Rio Blanco County Road #5. Turn west on CR 5 for approximately 26.9 miles to the junction of Rio Blanco CR #24. Proceed west on CR #24 for approximately 1.9 miles to CR #31. Turn northwest on CR #31 for 2.3 miles to the junction of CR #83. Turn northeast on CR #83 for 0.2 miles to the existing access road to FRU 197-31A. Proceed (north-northeast) on FRU 197-31A access road for approximately 1.2 miles. Turn south along ridge approximately 2,332' to the new wellpad. Flagging/stakes have been set to define route to the FRU 197-31B wellpad.