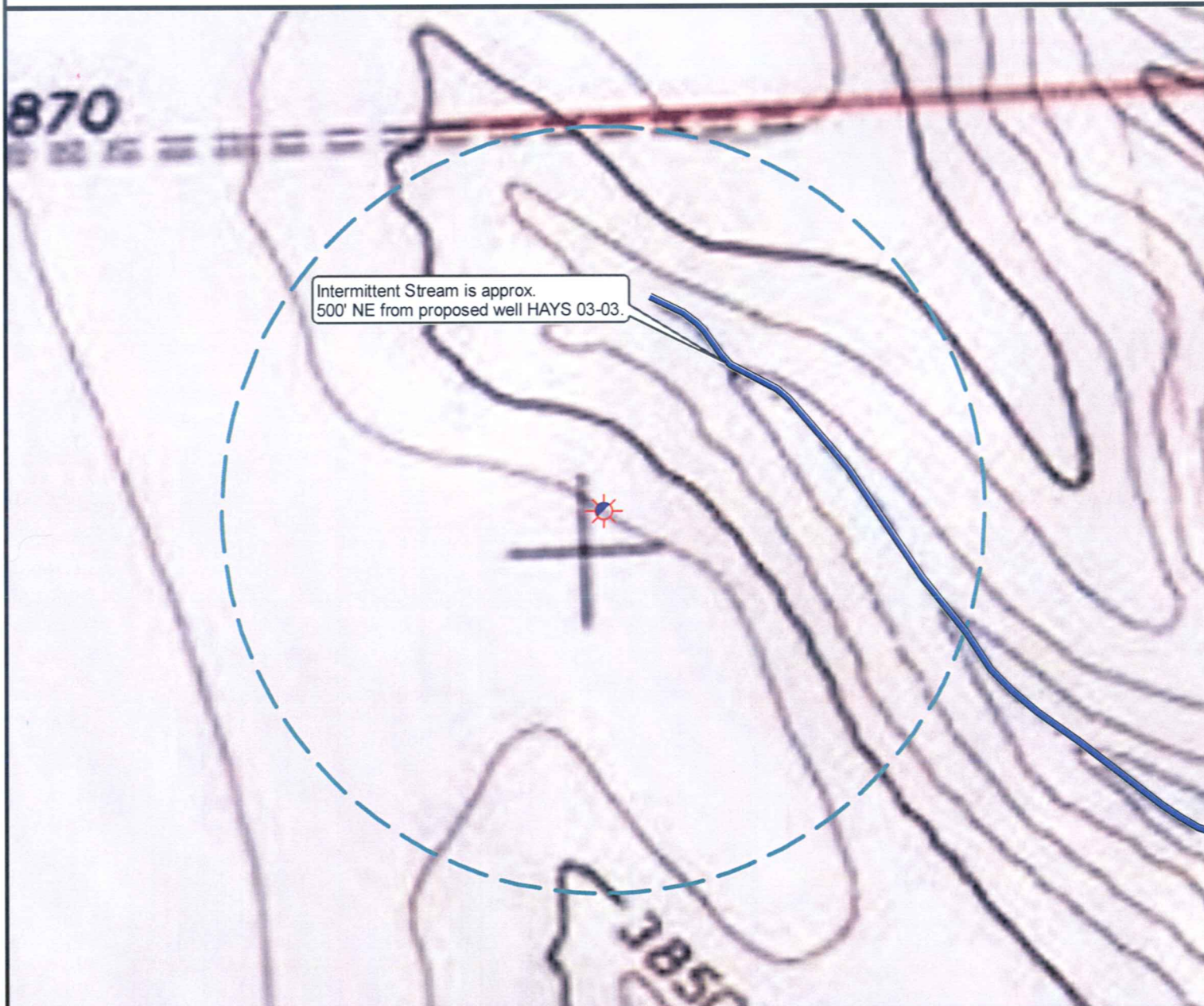


Hydrology Map



Legend

- | | |
|----------------------|-----------------------|
| Proposed Well | Building/Residence |
| Existing Well | Oil & Gas Equipment |
| Water Well | Water Body |
| Pedestal | Utility Box |
| CattleGuard/Gate | Railroad |
| Bridge | Fence |
| ECD | Overhead Power Line |
| 1000' Radius | Pipeline |
| Facilities Enclosure | Access Road |
| | Stream |
| | Concrete Walled Ditch |

1000ft Radius Map of Surface Water and Riparian Areas

HAYS 03-03

Surface Location: T2S R44W S03

Field Date: 12/13/2009
 Drawing Date: 1/11/2010
 Drafter: CGR
 Checked By: MPS

Prepared for:
 Roseffa Resources
 Operating LP
 717 Texas Avenue, Ste. 2800
 Houston, TX 77002



Use our resources to find yours!
www.petro-fs.com

1801 W. 13th Ave
 Denver, CO 80204
 (303) 928-7128

111 E. Third Street
 Suite 207
 Rifle, CO 81650
 (970) 625-4740