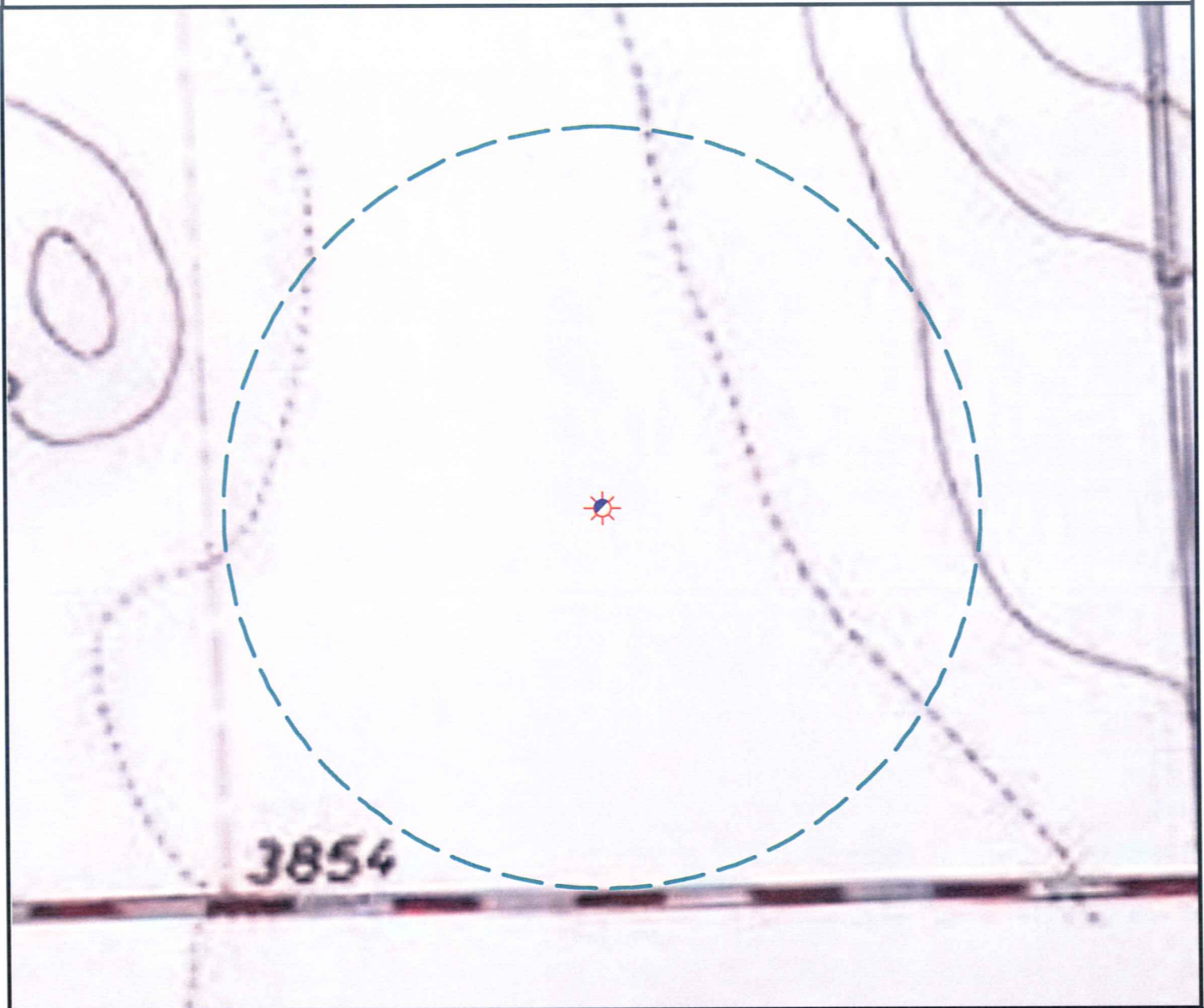
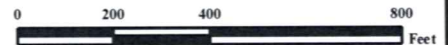


Hydrology Map



There are no surface waters within a 1000' radius of the proposed Oil & Gas location.



Legend

- | | |
|----------------------|-----------------------|
| Proposed Well | Building/Residence |
| Existing Well | Oil & Gas Equipment |
| Water Well | Water Body |
| Pedestal | Utility Box |
| CattleGuard/Gate | Railroad |
| Bridge | Fence |
| ECD | Overhead Power Line |
| 1000' Radius | Pipeline |
| Facilities Enclosure | Access Road |
| | Ditch/Canal |
| | Concrete Walled Ditch |

1000ft Radius Map of Surface Water and Riparian Areas

SCHOBE 22-15

Surface Location: T1S R44W S22

Field Date: 01/13/2010
Drawing Date: 01/16/2010
Drafter: JMK
Checked By: CGR

Prepared for:
Rosetta Resources
Operating LP
717 Texas Avenue, Ste. 2800
Houston, TX 77002



Use our resources to find yours!
www.petro-fs.com

1801 W. 13th Ave Suite 207
Denver, CO 80204
(303) 928-7128
111 E. Third Street
Rifle, CO 81650
(970) 625-4740