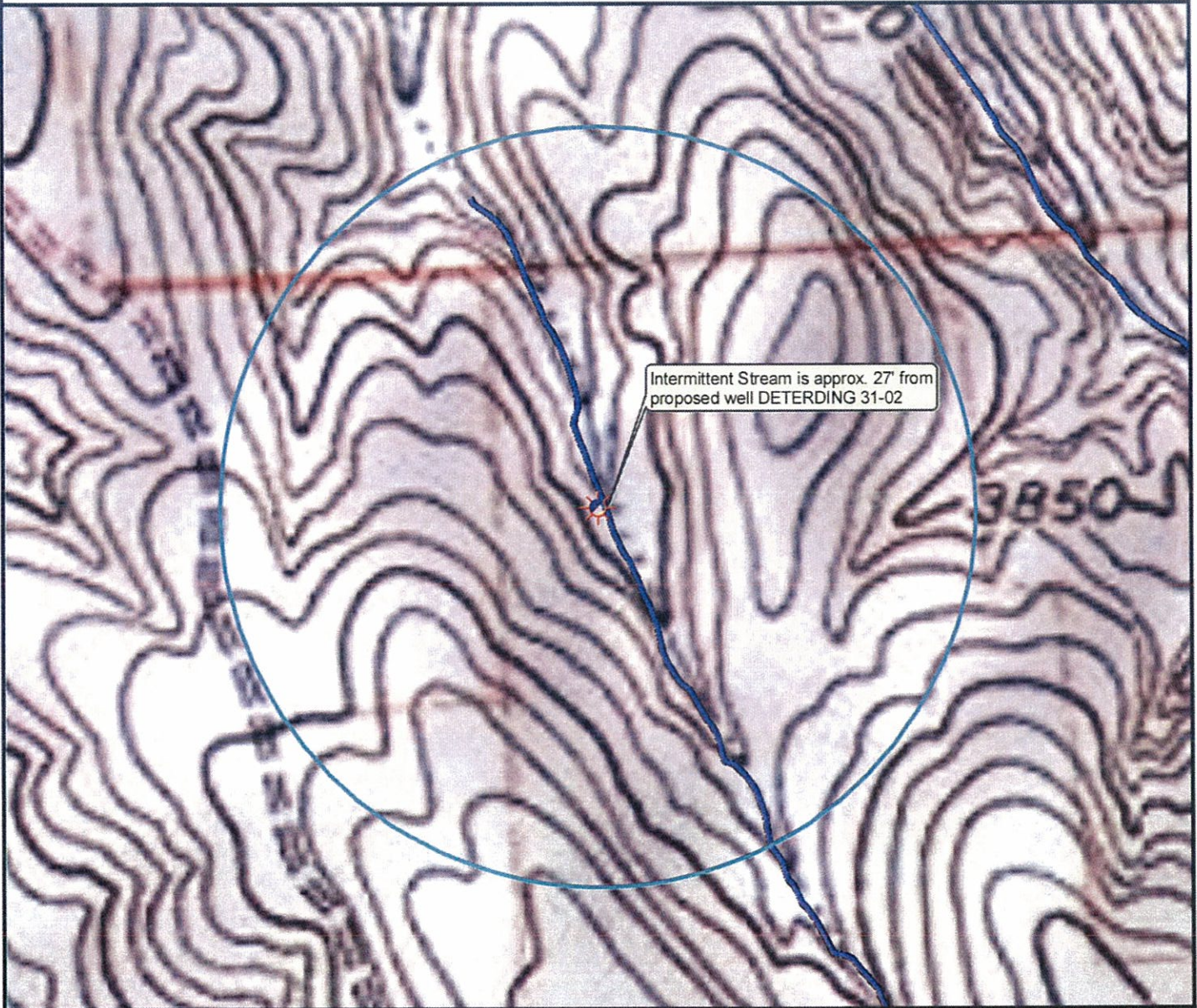


Hydrology Map



Legend

- | | |
|--------------------|----------------------|
| Proposed Well | Building/Residence |
| Existing Well | Oil & Gas Equipment |
| Water Well | Water Body |
| Pedestal | Utility Box |
| CattleGuard/Gate | Railroad |
| Bridge | Sewer |
| ECD | Fence |
| 1000' Radius | Overhead Power Line |
| Facility Enclosure | Pipeline |
| | Access Road |
| | Ditch/Canal |
| | Concrete Ditch/Canal |

1000ft Radius Map of Surface Waters and Riparian Areas

DETERDING 31-02

Surface Location: T1N R44W S31

Field Date: 10/15/2009
 Drawing Date: 11/16/2009
 Drafter: CGR
 Checked By: MPS

Prepared for:
ROSETTA RESOURCES
 OPERATING LP
 717 Texas Avenue, Ste. 2800
 Houston, TX 77002



Use our resources to find yours!
www.petro-fs.com

1801 W. 13th Ave Denver, CO 80204 (303) 928-7128
 111 E. Third Street Suite 207 Rifle, CO 81650 (970) 625-4740