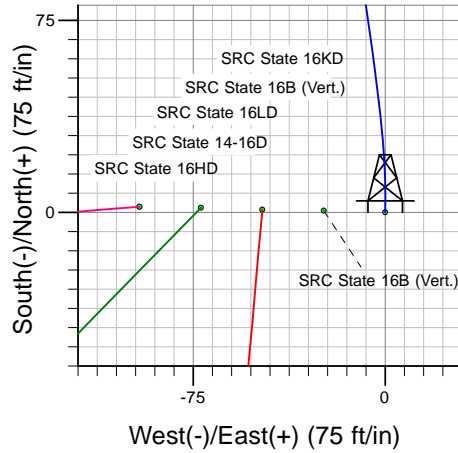
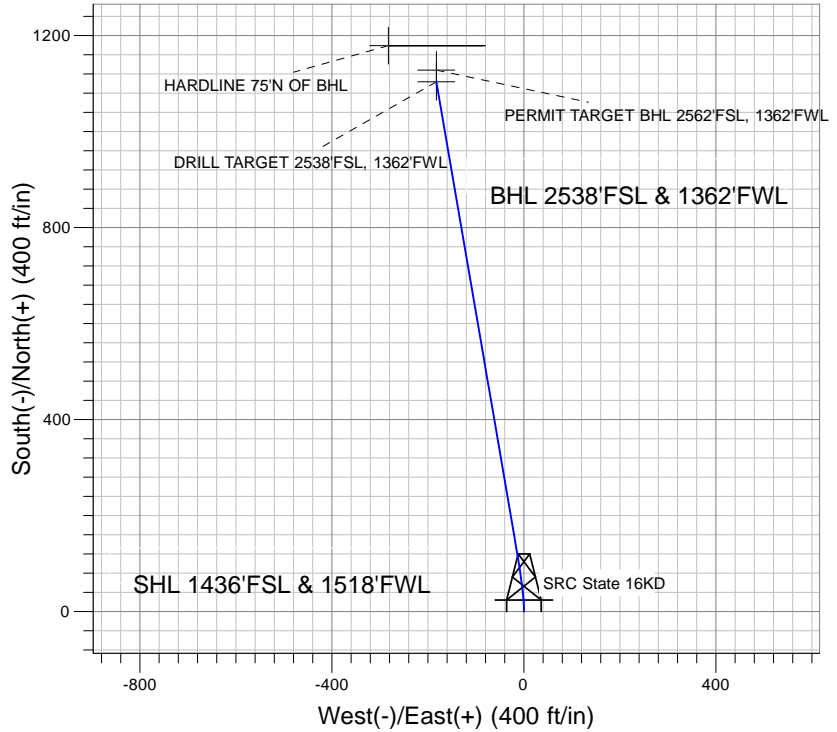
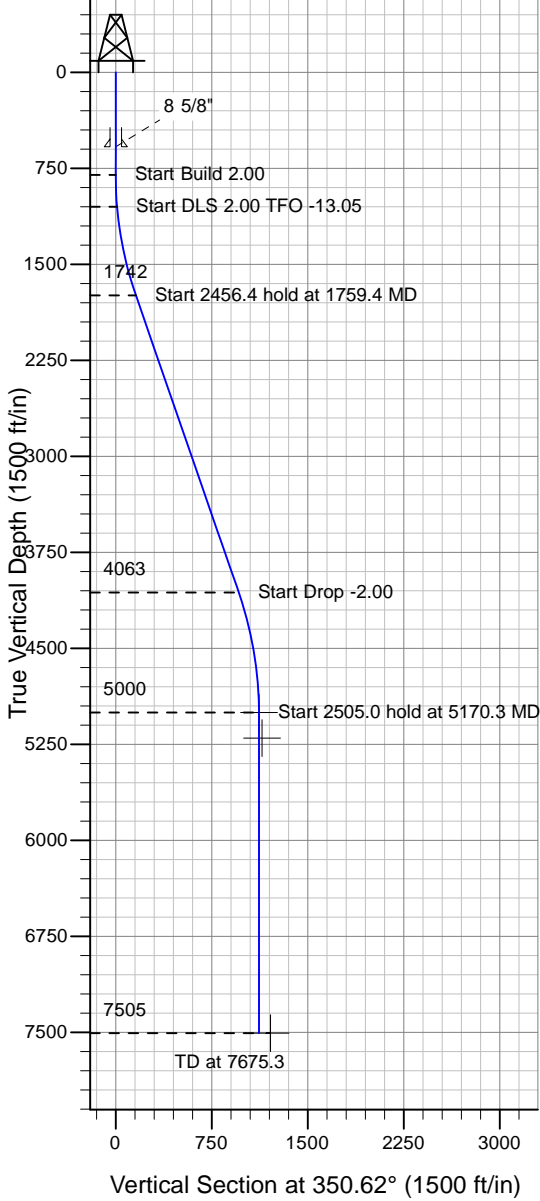


### Well Name: SRC State 16KD

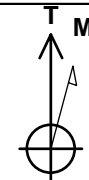
Surface Location: SRC-State Pad Sec.16-T4N-R67W  
 North American Datum 1983 , US State Plane 1983 , Colorado Northern Zone  
 Ground Elevation: 4897.0

+N/-S+E/-W Northing Easting Latitude Longitude Slot  
 0.0 0.0 1356162.45 3167242.08 40° 18' 34.250 N 104° 54' 1.109 W  
 Original Well Elev WELL @ 4910.0ft (Original Well Elev)

## Synergy Resources



SRC-State Pad Sec.16-T4N-R67W  
 SRC State 16KD  
 Plan #1 (1-8-10)  
 10:44, January 11 2010



Azimuths to True North  
 Magnetic North: 9.09°

Magnetic Field  
 Strength: 53241.4snT  
 Dip Angle: 67.01°  
 Date: 12/31/2009  
 Model: IGRF200510

### WELLBORE TARGET DETAILS (LAT/LONG)

Name	TVD	+N/-S	+E/-W	Latitude	Longitude	Shape
DRILL TARGET 2538'FSL, 1362'FWL	5000.0	1104.0	-182.3	40° 18' 45.160 N	104° 54' 3.462 W	Point
PERMIT TARGET BHL 2562'FSL, 1362'FWL	5200.0	1128.0	-182.3	40° 18' 45.397 N	104° 54' 3.462 W	Point
HARDLINE 75'N OF BHL	7505.0	1179.0	-282.3	40° 18' 45.901 N	104° 54' 4.753 W	Polygon

### SECTION DETAILS

Sec	MD	Inc	Azi	TVD	+N/-S	+E/-W	DLeg	TFace	VSec	Target
1	0.0	0.00	0.00	0.0	0.0	0.0	0.00	0.00	0.0	
2	800.0	0.00	0.00	800.0	0.0	0.0	0.00	0.00	0.0	
3	1050.0	5.00	0.00	1049.7	10.9	0.0	2.00	0.00	10.8	
4	1759.4	19.09	350.26	1741.7	156.9	-19.7	2.00	-13.05	158.0	
5	4215.8	19.09	350.26	4063.0	948.7	-155.6	0.00	0.00	961.4	
6	5170.3	0.00	0.00	5000.0	1104.0	-182.3	2.00	180.00	1118.9	DRILL TARGET 2538'FSL, 1362'FWL
7	7675.3	0.00	0.00	7505.0	1104.0	-182.3	0.00	0.00	1118.9	



## **Synergy Resources**

**SEC.16-T4N-R67W**

**SRC-State Pad Sec.16-T4N-R67W**

**SRC State 16KD**

**Wellbore #1**

**Plan: Plan #1 (1-8-10)**

## **Standard Planning Report**

**11 January, 2010**

<b>Database:</b>	EDM den0-adp01 Server Data	<b>Local Co-ordinate Reference:</b>	Well SRC State 16KD
<b>Company:</b>	Synergy Resources	<b>TVD Reference:</b>	WELL @ 4910.0ft (Original Well Elev)
<b>Project:</b>	SEC.16-T4N-R67W	<b>MD Reference:</b>	WELL @ 4910.0ft (Original Well Elev)
<b>Site:</b>	SRC-State Pad Sec.16-T4N-R67W	<b>North Reference:</b>	True
<b>Well:</b>	SRC State 16KD	<b>Survey Calculation Method:</b>	Minimum Curvature
<b>Wellbore:</b>	Wellbore #1		
<b>Design:</b>	Plan #1 (1-8-10)		

<b>Project</b>	SEC.16-T4N-R67W, Weld County, Colorado		
<b>Map System:</b>	US State Plane 1983	<b>System Datum:</b>	Mean Sea Level
<b>Geo Datum:</b>	North American Datum 1983		Using Well Reference Point
<b>Map Zone:</b>	Colorado Northern Zone		Using geodetic scale factor

<b>Site</b>	SRC-State Pad Sec.16-T4N-R67W				
<b>Site Position:</b>		<b>Northing:</b>	1,356,084.00ft	<b>Latitude:</b>	40° 18' 33.480 N
<b>From:</b>	Lat/Long	<b>Easting:</b>	3,167,169.55ft	<b>Longitude:</b>	104° 54' 2.052 W
<b>Position Uncertainty:</b>	0.0 ft	<b>Slot Radius:</b>	"	<b>Grid Convergence:</b>	0.39 °

<b>Well</b>	SRC State 16KD					
<b>Well Position</b>	<b>+N-S</b>	78.0 ft	<b>Northing:</b>	1,356,162.45 ft	<b>Latitude:</b>	40° 18' 34.250 N
	<b>+E-W</b>	73.1 ft	<b>Easting:</b>	3,167,242.08 ft	<b>Longitude:</b>	104° 54' 1.109 W
<b>Position Uncertainty</b>		0.0 ft	<b>Wellhead Elevation:</b>	ft	<b>Ground Level:</b>	4,897.0 ft

<b>Wellbore</b>	Wellbore #1				
<b>Magnetics</b>	<b>Model Name</b>	<b>Sample Date</b>	<b>Declination (°)</b>	<b>Dip Angle (°)</b>	<b>Field Strength (nT)</b>
	IGRF200510	12/31/2009	9.09	67.01	53,241

<b>Design</b>	Plan #1 (1-8-10)			
<b>Audit Notes:</b>				
<b>Version:</b>	<b>Phase:</b>	PROTOTYPE	<b>Tie On Depth:</b>	0.0
<b>Vertical Section:</b>	<b>Depth From (TVD) (ft)</b>	<b>+N-S (ft)</b>	<b>+E-W (ft)</b>	<b>Direction (°)</b>
	0.0	0.0	0.0	350.62

<b>Plan Sections</b>										
Measured Depth (ft)	Inclination (°)	Azimuth (°)	Vertical Depth (ft)	+N-S (ft)	+E-W (ft)	Dogleg Rate (°/100ft)	Build Rate (°/100ft)	Turn Rate (°/100ft)	TFO (°)	Target
0.0	0.00	0.00	0.0	0.0	0.0	0.00	0.00	0.00	0.00	
800.0	0.00	0.00	800.0	0.0	0.0	0.00	0.00	0.00	0.00	
1,050.0	5.00	0.00	1,049.7	10.9	0.0	2.00	2.00	0.00	0.00	
1,759.4	19.09	350.26	1,741.7	156.9	-19.7	2.00	1.99	-1.37	-13.05	
4,215.8	19.09	350.26	4,063.0	948.7	-155.6	0.00	0.00	0.00	0.00	
5,170.3	0.00	0.00	5,000.0	1,104.0	-182.3	2.00	-2.00	0.00	180.00	DRILL TARGET 25
7,675.3	0.00	0.00	7,505.0	1,104.0	-182.3	0.00	0.00	0.00	0.00	

<b>Database:</b>	EDM den0-adp01 Server Data	<b>Local Co-ordinate Reference:</b>	Well SRC State 16KD
<b>Company:</b>	Synergy Resources	<b>TVD Reference:</b>	WELL @ 4910.0ft (Original Well Elev)
<b>Project:</b>	SEC.16-T4N-R67W	<b>MD Reference:</b>	WELL @ 4910.0ft (Original Well Elev)
<b>Site:</b>	SRC-State Pad Sec.16-T4N-R67W	<b>North Reference:</b>	True
<b>Well:</b>	SRC State 16KD	<b>Survey Calculation Method:</b>	Minimum Curvature
<b>Wellbore:</b>	Wellbore #1		
<b>Design:</b>	Plan #1 (1-8-10)		

Planned Survey									
Measured Depth (ft)	Inclination (°)	Azimuth (°)	Vertical Depth (ft)	+N/-S (ft)	+E/-W (ft)	Vertical Section (ft)	Dogleg Rate (°/100ft)	Build Rate (°/100ft)	Turn Rate (°/100ft)
0.0	0.00	0.00	0.0	0.0	0.0	0.0	0.00	0.00	0.00
40.0	0.00	0.00	40.0	0.0	0.0	0.0	0.00	0.00	0.00
80.0	0.00	0.00	80.0	0.0	0.0	0.0	0.00	0.00	0.00
120.0	0.00	0.00	120.0	0.0	0.0	0.0	0.00	0.00	0.00
160.0	0.00	0.00	160.0	0.0	0.0	0.0	0.00	0.00	0.00
200.0	0.00	0.00	200.0	0.0	0.0	0.0	0.00	0.00	0.00
240.0	0.00	0.00	240.0	0.0	0.0	0.0	0.00	0.00	0.00
280.0	0.00	0.00	280.0	0.0	0.0	0.0	0.00	0.00	0.00
320.0	0.00	0.00	320.0	0.0	0.0	0.0	0.00	0.00	0.00
360.0	0.00	0.00	360.0	0.0	0.0	0.0	0.00	0.00	0.00
400.0	0.00	0.00	400.0	0.0	0.0	0.0	0.00	0.00	0.00
440.0	0.00	0.00	440.0	0.0	0.0	0.0	0.00	0.00	0.00
480.0	0.00	0.00	480.0	0.0	0.0	0.0	0.00	0.00	0.00
520.0	0.00	0.00	520.0	0.0	0.0	0.0	0.00	0.00	0.00
560.0	0.00	0.00	560.0	0.0	0.0	0.0	0.00	0.00	0.00
580.0	0.00	0.00	580.0	0.0	0.0	0.0	0.00	0.00	0.00
<b>8 5/8"</b>									
600.0	0.00	0.00	600.0	0.0	0.0	0.0	0.00	0.00	0.00
640.0	0.00	0.00	640.0	0.0	0.0	0.0	0.00	0.00	0.00
680.0	0.00	0.00	680.0	0.0	0.0	0.0	0.00	0.00	0.00
720.0	0.00	0.00	720.0	0.0	0.0	0.0	0.00	0.00	0.00
760.0	0.00	0.00	760.0	0.0	0.0	0.0	0.00	0.00	0.00
800.0	0.00	0.00	800.0	0.0	0.0	0.0	0.00	0.00	0.00
840.0	0.80	0.00	840.0	0.3	0.0	0.3	2.00	2.00	0.00
880.0	1.60	0.00	880.0	1.1	0.0	1.1	2.00	2.00	0.00
920.0	2.40	0.00	920.0	2.5	0.0	2.5	2.00	2.00	0.00
960.0	3.20	0.00	959.9	4.5	0.0	4.4	2.00	2.00	0.00
1,000.0	4.00	0.00	999.8	7.0	0.0	6.9	2.00	2.00	0.00
1,040.0	4.80	0.00	1,039.7	10.0	0.0	9.9	2.00	2.00	0.00
1,050.0	5.00	0.00	1,049.7	10.9	0.0	10.8	2.00	2.00	0.00
1,080.0	5.59	358.61	1,079.6	13.7	0.0	13.5	2.00	1.95	-4.64
1,120.0	6.37	357.15	1,119.3	17.8	-0.2	17.6	2.00	1.96	-3.64
1,160.0	7.16	356.01	1,159.1	22.5	-0.5	22.3	2.00	1.97	-2.84
1,200.0	7.95	355.10	1,198.7	27.8	-0.9	27.6	2.00	1.98	-2.28
1,240.0	8.74	354.35	1,238.3	33.6	-1.4	33.3	2.00	1.98	-1.87
1,280.0	9.54	353.73	1,277.8	39.9	-2.1	39.7	2.00	1.98	-1.56
1,320.0	10.33	353.20	1,317.2	46.7	-2.9	46.6	2.00	1.99	-1.32
1,360.0	11.13	352.74	1,356.5	54.1	-3.8	54.0	2.00	1.99	-1.14
1,400.0	11.92	352.35	1,395.7	62.1	-4.8	62.0	2.00	1.99	-0.99
1,440.0	12.72	352.00	1,434.7	70.5	-6.0	70.5	2.00	1.99	-0.86
1,480.0	13.52	351.70	1,473.7	79.5	-7.3	79.6	2.00	1.99	-0.76
1,520.0	14.32	351.42	1,512.5	89.0	-8.7	89.2	2.00	1.99	-0.68
1,560.0	15.11	351.18	1,551.2	99.1	-10.2	99.4	2.00	1.99	-0.61
1,600.0	15.91	350.96	1,589.8	109.6	-11.9	110.1	2.00	1.99	-0.55
1,640.0	16.71	350.76	1,628.2	120.7	-13.7	121.3	2.00	2.00	-0.50
1,680.0	17.51	350.58	1,666.4	132.3	-15.6	133.1	2.00	2.00	-0.46
1,720.0	18.31	350.41	1,704.4	144.5	-17.6	145.4	2.00	2.00	-0.42
1,759.4	19.09	350.26	1,741.7	156.9	-19.7	158.0	2.00	2.00	-0.38
1,760.0	19.09	350.26	1,742.3	157.1	-19.8	158.2	0.00	0.00	0.00
1,800.0	19.09	350.26	1,780.1	170.0	-22.0	171.3	0.00	0.00	0.00
1,840.0	19.09	350.26	1,817.9	182.9	-24.2	184.4	0.00	0.00	0.00
1,880.0	19.09	350.26	1,855.7	195.8	-26.4	197.5	0.00	0.00	0.00
1,920.0	19.09	350.26	1,893.5	208.7	-28.6	210.5	0.00	0.00	0.00
1,960.0	19.09	350.26	1,931.3	221.6	-30.8	223.6	0.00	0.00	0.00

<b>Database:</b>	EDM den0-adp01 Server Data	<b>Local Co-ordinate Reference:</b>	Well SRC State 16KD
<b>Company:</b>	Synergy Resources	<b>TVD Reference:</b>	WELL @ 4910.0ft (Original Well Elev)
<b>Project:</b>	SEC.16-T4N-R67W	<b>MD Reference:</b>	WELL @ 4910.0ft (Original Well Elev)
<b>Site:</b>	SRC-State Pad Sec.16-T4N-R67W	<b>North Reference:</b>	True
<b>Well:</b>	SRC State 16KD	<b>Survey Calculation Method:</b>	Minimum Curvature
<b>Wellbore:</b>	Wellbore #1		
<b>Design:</b>	Plan #1 (1-8-10)		

Planned Survey									
Measured Depth (ft)	Inclination (°)	Azimuth (°)	Vertical Depth (ft)	+N/-S (ft)	+E/-W (ft)	Vertical Section (ft)	Dogleg Rate (°/100ft)	Build Rate (°/100ft)	Turn Rate (°/100ft)
2,000.0	19.09	350.26	1,969.1	234.5	-33.0	236.7	0.00	0.00	0.00
2,040.0	19.09	350.26	2,006.9	247.4	-35.3	249.8	0.00	0.00	0.00
2,080.0	19.09	350.26	2,044.7	260.2	-37.5	262.9	0.00	0.00	0.00
2,120.0	19.09	350.26	2,082.5	273.1	-39.7	276.0	0.00	0.00	0.00
2,160.0	19.09	350.26	2,120.3	286.0	-41.9	289.0	0.00	0.00	0.00
2,200.0	19.09	350.26	2,158.1	298.9	-44.1	302.1	0.00	0.00	0.00
2,240.0	19.09	350.26	2,195.9	311.8	-46.3	315.2	0.00	0.00	0.00
2,280.0	19.09	350.26	2,233.7	324.7	-48.5	328.3	0.00	0.00	0.00
2,320.0	19.09	350.26	2,271.5	337.6	-50.7	341.4	0.00	0.00	0.00
2,360.0	19.09	350.26	2,309.3	350.5	-53.0	354.5	0.00	0.00	0.00
2,400.0	19.09	350.26	2,347.1	363.4	-55.2	367.5	0.00	0.00	0.00
2,440.0	19.09	350.26	2,384.9	376.3	-57.4	380.6	0.00	0.00	0.00
2,480.0	19.09	350.26	2,422.7	389.2	-59.6	393.7	0.00	0.00	0.00
2,520.0	19.09	350.26	2,460.5	402.1	-61.8	406.8	0.00	0.00	0.00
2,560.0	19.09	350.26	2,498.3	415.0	-64.0	419.9	0.00	0.00	0.00
2,600.0	19.09	350.26	2,536.1	427.9	-66.2	432.9	0.00	0.00	0.00
2,640.0	19.09	350.26	2,573.9	440.8	-68.5	446.0	0.00	0.00	0.00
2,680.0	19.09	350.26	2,611.7	453.7	-70.7	459.1	0.00	0.00	0.00
2,720.0	19.09	350.26	2,649.5	466.6	-72.9	472.2	0.00	0.00	0.00
2,760.0	19.09	350.26	2,687.3	479.4	-75.1	485.3	0.00	0.00	0.00
2,800.0	19.09	350.26	2,725.1	492.3	-77.3	498.4	0.00	0.00	0.00
2,840.0	19.09	350.26	2,762.9	505.2	-79.5	511.4	0.00	0.00	0.00
2,880.0	19.09	350.26	2,800.7	518.1	-81.7	524.5	0.00	0.00	0.00
2,920.0	19.09	350.26	2,838.5	531.0	-83.9	537.6	0.00	0.00	0.00
2,960.0	19.09	350.26	2,876.3	543.9	-86.2	550.7	0.00	0.00	0.00
3,000.0	19.09	350.26	2,914.1	556.8	-88.4	563.8	0.00	0.00	0.00
3,040.0	19.09	350.26	2,951.9	569.7	-90.6	576.9	0.00	0.00	0.00
3,080.0	19.09	350.26	2,989.7	582.6	-92.8	589.9	0.00	0.00	0.00
3,120.0	19.09	350.26	3,027.5	595.5	-95.0	603.0	0.00	0.00	0.00
3,160.0	19.09	350.26	3,065.3	608.4	-97.2	616.1	0.00	0.00	0.00
3,200.0	19.09	350.26	3,103.1	621.3	-99.4	629.2	0.00	0.00	0.00
3,240.0	19.09	350.26	3,140.9	634.2	-101.7	642.3	0.00	0.00	0.00
3,280.0	19.09	350.26	3,178.7	647.1	-103.9	655.3	0.00	0.00	0.00
3,320.0	19.09	350.26	3,216.5	660.0	-106.1	668.4	0.00	0.00	0.00
3,360.0	19.09	350.26	3,254.3	672.9	-108.3	681.5	0.00	0.00	0.00
3,400.0	19.09	350.26	3,292.1	685.8	-110.5	694.6	0.00	0.00	0.00
3,440.0	19.09	350.26	3,329.9	698.6	-112.7	707.7	0.00	0.00	0.00
3,480.0	19.09	350.26	3,367.7	711.5	-114.9	720.8	0.00	0.00	0.00
3,520.0	19.09	350.26	3,405.5	724.4	-117.1	733.8	0.00	0.00	0.00
3,560.0	19.09	350.26	3,443.3	737.3	-119.4	746.9	0.00	0.00	0.00
3,600.0	19.09	350.26	3,481.1	750.2	-121.6	760.0	0.00	0.00	0.00
3,640.0	19.09	350.26	3,518.9	763.1	-123.8	773.1	0.00	0.00	0.00
3,680.0	19.09	350.26	3,556.7	776.0	-126.0	786.2	0.00	0.00	0.00
3,720.0	19.09	350.26	3,594.5	788.9	-128.2	799.3	0.00	0.00	0.00
3,760.0	19.09	350.26	3,632.3	801.8	-130.4	812.3	0.00	0.00	0.00
3,800.0	19.09	350.26	3,670.1	814.7	-132.6	825.4	0.00	0.00	0.00
3,840.0	19.09	350.26	3,707.9	827.6	-134.9	838.5	0.00	0.00	0.00
3,880.0	19.09	350.26	3,745.7	840.5	-137.1	851.6	0.00	0.00	0.00
3,920.0	19.09	350.26	3,783.5	853.4	-139.3	864.7	0.00	0.00	0.00
3,960.0	19.09	350.26	3,821.3	866.3	-141.5	877.7	0.00	0.00	0.00
4,000.0	19.09	350.26	3,859.1	879.2	-143.7	890.8	0.00	0.00	0.00
4,040.0	19.09	350.26	3,896.9	892.1	-145.9	903.9	0.00	0.00	0.00
4,080.0	19.09	350.26	3,934.7	904.9	-148.1	917.0	0.00	0.00	0.00
4,120.0	19.09	350.26	3,972.5	917.8	-150.3	930.1	0.00	0.00	0.00

<b>Database:</b>	EDM den0-adp01 Server Data	<b>Local Co-ordinate Reference:</b>	Well SRC State 16KD
<b>Company:</b>	Synergy Resources	<b>TVD Reference:</b>	WELL @ 4910.0ft (Original Well Elev)
<b>Project:</b>	SEC.16-T4N-R67W	<b>MD Reference:</b>	WELL @ 4910.0ft (Original Well Elev)
<b>Site:</b>	SRC-State Pad Sec.16-T4N-R67W	<b>North Reference:</b>	True
<b>Well:</b>	SRC State 16KD	<b>Survey Calculation Method:</b>	Minimum Curvature
<b>Wellbore:</b>	Wellbore #1		
<b>Design:</b>	Plan #1 (1-8-10)		

Planned Survey										
Measured Depth (ft)	Inclination (°)	Azimuth (°)	Vertical Depth (ft)	+N/-S (ft)	+E/-W (ft)	Vertical Section (ft)	Dogleg Rate (°/100ft)	Build Rate (°/100ft)	Turn Rate (°/100ft)	
4,160.0	19.09	350.26	4,010.3	930.7	-152.6	943.2	0.00	0.00	0.00	
4,200.0	19.09	350.26	4,048.1	943.6	-154.8	956.2	0.00	0.00	0.00	
4,215.8	19.09	350.26	4,063.0	948.7	-155.6	961.4	0.00	0.00	0.00	
4,240.0	18.61	350.26	4,086.0	956.4	-157.0	969.2	2.00	-2.00	0.00	
4,280.0	17.81	350.26	4,124.0	968.7	-159.1	981.7	2.00	-2.00	0.00	
4,320.0	17.01	350.26	4,162.1	980.5	-161.1	993.7	2.00	-2.00	0.00	
4,360.0	16.21	350.26	4,200.5	991.8	-163.0	1,005.1	2.00	-2.00	0.00	
4,400.0	15.41	350.26	4,239.0	1,002.5	-164.9	1,016.0	2.00	-2.00	0.00	
4,440.0	14.61	350.26	4,277.6	1,012.7	-166.6	1,026.4	2.00	-2.00	0.00	
4,480.0	13.81	350.26	4,316.4	1,022.4	-168.3	1,036.2	2.00	-2.00	0.00	
4,520.0	13.01	350.26	4,355.3	1,031.6	-169.9	1,045.5	2.00	-2.00	0.00	
4,560.0	12.21	350.26	4,394.3	1,040.2	-171.3	1,054.2	2.00	-2.00	0.00	
4,600.0	11.41	350.26	4,433.5	1,048.2	-172.7	1,062.4	2.00	-2.00	0.00	
4,640.0	10.61	350.26	4,472.7	1,055.8	-174.0	1,070.0	2.00	-2.00	0.00	
4,680.0	9.81	350.26	4,512.1	1,062.7	-175.2	1,077.1	2.00	-2.00	0.00	
4,720.0	9.01	350.26	4,551.6	1,069.2	-176.3	1,083.6	2.00	-2.00	0.00	
4,760.0	8.21	350.26	4,591.1	1,075.1	-177.3	1,089.6	2.00	-2.00	0.00	
4,800.0	7.41	350.26	4,630.7	1,080.4	-178.3	1,095.0	2.00	-2.00	0.00	
4,840.0	6.61	350.26	4,670.4	1,085.3	-179.1	1,099.9	2.00	-2.00	0.00	
4,880.0	5.81	350.26	4,710.2	1,089.5	-179.8	1,104.3	2.00	-2.00	0.00	
4,920.0	5.01	350.26	4,750.0	1,093.2	-180.5	1,108.0	2.00	-2.00	0.00	
4,960.0	4.21	350.26	4,789.9	1,096.4	-181.0	1,111.2	2.00	-2.00	0.00	
5,000.0	3.41	350.26	4,829.8	1,099.0	-181.4	1,113.9	2.00	-2.00	0.00	
5,040.0	2.61	350.26	4,869.8	1,101.1	-181.8	1,116.0	2.00	-2.00	0.00	
5,080.0	1.81	350.26	4,909.7	1,102.6	-182.1	1,117.5	2.00	-2.00	0.00	
5,120.0	1.01	350.26	4,949.7	1,103.6	-182.2	1,118.5	2.00	-2.00	0.00	
5,160.0	0.21	350.26	4,989.7	1,104.0	-182.3	1,118.9	2.00	-2.00	0.00	
5,170.3	0.00	0.00	5,000.0	1,104.0	-182.3	1,118.9	2.00	-2.00	0.00	
<b>DRILL TARGET 2538'FSL, 1362'FWL</b>										
5,200.0	0.00	0.00	5,029.7	1,104.0	-182.3	1,118.9	0.00	0.00	0.00	
5,240.0	0.00	0.00	5,069.7	1,104.0	-182.3	1,118.9	0.00	0.00	0.00	
5,280.0	0.00	0.00	5,109.7	1,104.0	-182.3	1,118.9	0.00	0.00	0.00	
5,320.0	0.00	0.00	5,149.7	1,104.0	-182.3	1,118.9	0.00	0.00	0.00	
5,360.0	0.00	0.00	5,189.7	1,104.0	-182.3	1,118.9	0.00	0.00	0.00	
5,370.3	0.00	0.00	5,200.0	1,104.0	-182.3	1,118.9	0.00	0.00	0.00	
<b>PERMIT TARGET BHL 2562'FSL, 1362'FWL</b>										
5,400.0	0.00	0.00	5,229.7	1,104.0	-182.3	1,118.9	0.00	0.00	0.00	
5,440.0	0.00	0.00	5,269.7	1,104.0	-182.3	1,118.9	0.00	0.00	0.00	
5,480.0	0.00	0.00	5,309.7	1,104.0	-182.3	1,118.9	0.00	0.00	0.00	
5,520.0	0.00	0.00	5,349.7	1,104.0	-182.3	1,118.9	0.00	0.00	0.00	
5,560.0	0.00	0.00	5,389.7	1,104.0	-182.3	1,118.9	0.00	0.00	0.00	
5,600.0	0.00	0.00	5,429.7	1,104.0	-182.3	1,118.9	0.00	0.00	0.00	
5,640.0	0.00	0.00	5,469.7	1,104.0	-182.3	1,118.9	0.00	0.00	0.00	
5,680.0	0.00	0.00	5,509.7	1,104.0	-182.3	1,118.9	0.00	0.00	0.00	
5,720.0	0.00	0.00	5,549.7	1,104.0	-182.3	1,118.9	0.00	0.00	0.00	
5,760.0	0.00	0.00	5,589.7	1,104.0	-182.3	1,118.9	0.00	0.00	0.00	
5,800.0	0.00	0.00	5,629.7	1,104.0	-182.3	1,118.9	0.00	0.00	0.00	
5,840.0	0.00	0.00	5,669.7	1,104.0	-182.3	1,118.9	0.00	0.00	0.00	
5,880.0	0.00	0.00	5,709.7	1,104.0	-182.3	1,118.9	0.00	0.00	0.00	
5,920.0	0.00	0.00	5,749.7	1,104.0	-182.3	1,118.9	0.00	0.00	0.00	
5,960.0	0.00	0.00	5,789.7	1,104.0	-182.3	1,118.9	0.00	0.00	0.00	
6,000.0	0.00	0.00	5,829.7	1,104.0	-182.3	1,118.9	0.00	0.00	0.00	
6,040.0	0.00	0.00	5,869.7	1,104.0	-182.3	1,118.9	0.00	0.00	0.00	
6,080.0	0.00	0.00	5,909.7	1,104.0	-182.3	1,118.9	0.00	0.00	0.00	

<b>Database:</b>	EDM den0-adp01 Server Data	<b>Local Co-ordinate Reference:</b>	Well SRC State 16KD
<b>Company:</b>	Synergy Resources	<b>TVD Reference:</b>	WELL @ 4910.0ft (Original Well Elev)
<b>Project:</b>	SEC.16-T4N-R67W	<b>MD Reference:</b>	WELL @ 4910.0ft (Original Well Elev)
<b>Site:</b>	SRC-State Pad Sec.16-T4N-R67W	<b>North Reference:</b>	True
<b>Well:</b>	SRC State 16KD	<b>Survey Calculation Method:</b>	Minimum Curvature
<b>Wellbore:</b>	Wellbore #1		
<b>Design:</b>	Plan #1 (1-8-10)		

**Planned Survey**

Measured Depth (ft)	Inclination (°)	Azimuth (°)	Vertical Depth (ft)	+N-S (ft)	+E-W (ft)	Vertical Section (ft)	Dogleg Rate (°/100ft)	Build Rate (°/100ft)	Turn Rate (°/100ft)
6,120.0	0.00	0.00	5,949.7	1,104.0	-182.3	1,118.9	0.00	0.00	0.00
6,160.0	0.00	0.00	5,989.7	1,104.0	-182.3	1,118.9	0.00	0.00	0.00
6,200.0	0.00	0.00	6,029.7	1,104.0	-182.3	1,118.9	0.00	0.00	0.00
6,240.0	0.00	0.00	6,069.7	1,104.0	-182.3	1,118.9	0.00	0.00	0.00
6,280.0	0.00	0.00	6,109.7	1,104.0	-182.3	1,118.9	0.00	0.00	0.00
6,320.0	0.00	0.00	6,149.7	1,104.0	-182.3	1,118.9	0.00	0.00	0.00
6,360.0	0.00	0.00	6,189.7	1,104.0	-182.3	1,118.9	0.00	0.00	0.00
6,400.0	0.00	0.00	6,229.7	1,104.0	-182.3	1,118.9	0.00	0.00	0.00
6,440.0	0.00	0.00	6,269.7	1,104.0	-182.3	1,118.9	0.00	0.00	0.00
6,480.0	0.00	0.00	6,309.7	1,104.0	-182.3	1,118.9	0.00	0.00	0.00
6,520.0	0.00	0.00	6,349.7	1,104.0	-182.3	1,118.9	0.00	0.00	0.00
6,560.0	0.00	0.00	6,389.7	1,104.0	-182.3	1,118.9	0.00	0.00	0.00
6,600.0	0.00	0.00	6,429.7	1,104.0	-182.3	1,118.9	0.00	0.00	0.00
6,640.0	0.00	0.00	6,469.7	1,104.0	-182.3	1,118.9	0.00	0.00	0.00
6,680.0	0.00	0.00	6,509.7	1,104.0	-182.3	1,118.9	0.00	0.00	0.00
6,720.0	0.00	0.00	6,549.7	1,104.0	-182.3	1,118.9	0.00	0.00	0.00
6,760.0	0.00	0.00	6,589.7	1,104.0	-182.3	1,118.9	0.00	0.00	0.00
6,800.0	0.00	0.00	6,629.7	1,104.0	-182.3	1,118.9	0.00	0.00	0.00
6,840.0	0.00	0.00	6,669.7	1,104.0	-182.3	1,118.9	0.00	0.00	0.00
6,880.0	0.00	0.00	6,709.7	1,104.0	-182.3	1,118.9	0.00	0.00	0.00
6,920.0	0.00	0.00	6,749.7	1,104.0	-182.3	1,118.9	0.00	0.00	0.00
6,960.0	0.00	0.00	6,789.7	1,104.0	-182.3	1,118.9	0.00	0.00	0.00
7,000.0	0.00	0.00	6,829.7	1,104.0	-182.3	1,118.9	0.00	0.00	0.00
7,040.0	0.00	0.00	6,869.7	1,104.0	-182.3	1,118.9	0.00	0.00	0.00
7,080.0	0.00	0.00	6,909.7	1,104.0	-182.3	1,118.9	0.00	0.00	0.00
7,120.0	0.00	0.00	6,949.7	1,104.0	-182.3	1,118.9	0.00	0.00	0.00
7,160.0	0.00	0.00	6,989.7	1,104.0	-182.3	1,118.9	0.00	0.00	0.00
7,200.0	0.00	0.00	7,029.7	1,104.0	-182.3	1,118.9	0.00	0.00	0.00
7,240.0	0.00	0.00	7,069.7	1,104.0	-182.3	1,118.9	0.00	0.00	0.00
7,280.0	0.00	0.00	7,109.7	1,104.0	-182.3	1,118.9	0.00	0.00	0.00
7,320.0	0.00	0.00	7,149.7	1,104.0	-182.3	1,118.9	0.00	0.00	0.00
7,360.0	0.00	0.00	7,189.7	1,104.0	-182.3	1,118.9	0.00	0.00	0.00
7,400.0	0.00	0.00	7,229.7	1,104.0	-182.3	1,118.9	0.00	0.00	0.00
7,440.0	0.00	0.00	7,269.7	1,104.0	-182.3	1,118.9	0.00	0.00	0.00
7,480.0	0.00	0.00	7,309.7	1,104.0	-182.3	1,118.9	0.00	0.00	0.00
7,520.0	0.00	0.00	7,349.7	1,104.0	-182.3	1,118.9	0.00	0.00	0.00
7,560.0	0.00	0.00	7,389.7	1,104.0	-182.3	1,118.9	0.00	0.00	0.00
7,600.0	0.00	0.00	7,429.7	1,104.0	-182.3	1,118.9	0.00	0.00	0.00
7,640.0	0.00	0.00	7,469.7	1,104.0	-182.3	1,118.9	0.00	0.00	0.00
7,675.3	0.00	0.00	7,505.0	1,104.0	-182.3	1,118.9	0.00	0.00	0.00

**HARDLINE 75'N OF BHL**

<b>Database:</b>	EDM den0-adp01 Server Data	<b>Local Co-ordinate Reference:</b>	Well SRC State 16KD
<b>Company:</b>	Synergy Resources	<b>TVD Reference:</b>	WELL @ 4910.0ft (Original Well Elev)
<b>Project:</b>	SEC.16-T4N-R67W	<b>MD Reference:</b>	WELL @ 4910.0ft (Original Well Elev)
<b>Site:</b>	SRC-State Pad Sec.16-T4N-R67W	<b>North Reference:</b>	True
<b>Well:</b>	SRC State 16KD	<b>Survey Calculation Method:</b>	Minimum Curvature
<b>Wellbore:</b>	Wellbore #1		
<b>Design:</b>	Plan #1 (1-8-10)		

Targets									
Target Name	Dip Angle (°)	Dip Dir. (°)	TVD (ft)	+N/-S (ft)	+E/-W (ft)	Northing (ft)	Easting (ft)	Latitude	Longitude
HARDLINE 75'N OF E	0.00	0.00	7,505.0	1,179.0	-282.3	1,357,339.46	3,166,951.83	40° 18' 45.901 N	104° 54' 4.753 W
- plan misses target center by 125.0ft at 7675.3ft MD (7505.0 TVD, 1104.0 N, -182.3 E)									
- Polygon									
Point 1			7,505.0	0.0	0.0	1,357,339.46	3,166,951.83		
Point 2			7,505.0	0.0	200.0	1,357,340.81	3,167,151.82		
PERMIT TARGET BH	0.00	0.00	5,200.0	1,128.0	-182.3	1,357,289.15	3,167,052.17	40° 18' 45.397 N	104° 54' 3.462 W
- plan misses target center by 24.0ft at 5370.3ft MD (5200.0 TVD, 1104.0 N, -182.3 E)									
- Point									
DRILL TARGET 2538	0.00	0.00	5,000.0	1,104.0	-182.3	1,357,265.14	3,167,052.33	40° 18' 45.160 N	104° 54' 3.462 W
- plan hits target center									
- Point									

Casing Points						
Measured Depth (ft)	Vertical Depth (ft)	Name	Casing Diameter (")	Hole Diameter (")		
580.0	580.0	8 5/8"	8-5/8	12-1/4		



## **Directional**

### **Synergy Resources**

**SEC.16-T4N-R67W**

**SRC-State Pad Sec.16-T4N-R67W**

**SRC State 16KD**

**Wellbore #1**

**Plan #1 (1-8-10)**

## **Anticollision Report**

**11 January, 2010**

<b>Company:</b>	Synergy Resources	<b>Local Co-ordinate Reference:</b>	Well SRC State 16KD
<b>Project:</b>	SEC.16-T4N-R67W	<b>TVD Reference:</b>	WELL @ 4910.0ft (Original Well Elev)
<b>Reference Site:</b>	SRC-State Pad Sec.16-T4N-R67W	<b>MD Reference:</b>	WELL @ 4910.0ft (Original Well Elev)
<b>Site Error:</b>	0.0ft	<b>North Reference:</b>	True
<b>Reference Well:</b>	SRC State 16KD	<b>Survey Calculation Method:</b>	Minimum Curvature
<b>Well Error:</b>	0.0ft	<b>Output errors are at</b>	2.00 sigma
<b>Reference Wellbore</b>	Wellbore #1	<b>Database:</b>	EDM den0-adp01 Server Data
<b>Reference Design:</b>	Plan #1 (1-8-10)	<b>Offset TVD Reference:</b>	Offset Datum

<b>Reference</b>	Plan #1 (1-8-10)		
<b>Filter type:</b>	NO GLOBAL FILTER: Using user defined selection & filtering criteria		
<b>Interpolation Method:</b>	MD Interval 100.0ft	<b>Error Model:</b>	ISCWSA
<b>Depth Range:</b>	Unlimited	<b>Scan Method:</b>	Closest Approach 3D
<b>Results Limited by:</b>	Maximum center-center distance of 2,000.0ft	<b>Error Surface:</b>	Elliptical Conic
<b>Warning Levels Evaluated at:</b>	2.00 Sigma		

<b>Survey Tool Program</b>	<b>Date</b>	1/8/2010		
<b>From (ft)</b>	<b>To (ft)</b>	<b>Survey (Wellbore)</b>	<b>Tool Name</b>	<b>Description</b>
0.0	7,675.3	Plan #1 (1-8-10) (Wellbore #1)	MWD	MWD - Standard

<b>Summary</b>						
<b>Site Name</b>	<b>Reference Measured Depth (ft)</b>	<b>Offset Measured Depth (ft)</b>	<b>Distance Between Centres (ft)</b>	<b>Distance Between Ellipses (ft)</b>	<b>Separation Factor</b>	<b>Warning</b>
<b>Offset Well - Wellbore - Design</b>						
SRC-State Pad Sec.16-T4N-R67W						
SRC State 16B (Vert.) - Wellbore #1 - Design #1	864.4	864.4	24.0	20.3	6.553 CC	
SRC State 16B (Vert.) - Wellbore #1 - Design #1	900.0	900.0	24.0	20.2	6.284 ES	
SRC State 16B (Vert.) - Wellbore #1 - Design #1	1,000.0	999.8	24.8	20.5	5.806 SF	

<b>Offset Design</b>												<b>Offset Site Error:</b>	0.0ft
SRC-State Pad Sec.16-T4N-R67W - SRC State 16B (Vert.) - Wellbore #1 - Design #1												<b>Offset Well Error:</b>	0.0ft
Survey Program: 0-MWD													
<b>Reference</b>	<b>Offset</b>	<b>Semi Major Axis</b>			<b>Distance</b>							<b>Warning</b>	
<b>Measured Depth (ft)</b>	<b>Vertical Depth (ft)</b>	<b>Measured Depth (ft)</b>	<b>Vertical Depth (ft)</b>	<b>Reference (ft)</b>	<b>Offset (ft)</b>	<b>Highside Toolface (°)</b>	<b>Offset Wellbore Centre +N/-S (ft)</b>	<b>Offset Wellbore Centre +E/-W (ft)</b>	<b>Between Centres (ft)</b>	<b>Between Ellipses (ft)</b>	<b>Minimum Separation (ft)</b>	<b>Separation Factor</b>	
0.0	0.0	0.0	0.0	0.0	0.0	-88.27	0.7	-24.0	24.0				
100.0	100.0	100.0	100.0	0.1	0.1	-88.27	0.7	-24.0	24.0	23.8	0.22	106.759	
200.0	200.0	200.0	200.0	0.3	0.3	-88.27	0.7	-24.0	24.0	23.3	0.67	35.586	
300.0	300.0	300.0	300.0	0.6	0.6	-88.27	0.7	-24.0	24.0	22.9	1.12	21.352	
400.0	400.0	400.0	400.0	0.8	0.8	-88.27	0.7	-24.0	24.0	22.4	1.57	15.251	
500.0	500.0	500.0	500.0	1.0	1.0	-88.27	0.7	-24.0	24.0	22.0	2.02	11.862	
600.0	600.0	600.0	600.0	1.2	1.2	-88.27	0.7	-24.0	24.0	21.5	2.47	9.705	
700.0	700.0	700.0	700.0	1.5	1.5	-88.27	0.7	-24.0	24.0	21.1	2.92	8.212	
800.0	800.0	800.0	800.0	1.7	1.7	-88.27	0.7	-24.0	24.0	20.6	3.37	7.117	
864.4	864.4	864.4	864.4	1.8	1.8	-90.00	0.7	-24.0	24.0	20.3	3.66	6.553 CC	
900.0	900.0	900.0	900.0	1.9	1.9	-92.44	0.7	-24.0	24.0	20.2	3.82	6.284 ES	
1,000.0	999.8	999.8	999.8	2.1	2.1	-104.58	0.7	-24.0	24.8	20.5	4.27	5.806 SF	
1,100.0	1,099.5	1,099.5	1,099.5	2.4	2.4	-119.75	0.7	-24.0	28.2	23.5	4.72	5.967	
1,200.0	1,198.7	1,198.7	1,198.7	2.6	2.6	-134.33	0.7	-24.0	35.6	30.4	5.18	6.871	
1,300.0	1,297.5	1,297.5	1,297.5	2.9	2.8	-146.20	0.7	-24.0	47.7	42.0	5.62	8.475	
1,400.0	1,395.7	1,395.7	1,395.7	3.2	3.0	-154.51	0.7	-24.0	64.3	58.2	6.06	10.603	
1,500.0	1,493.1	1,493.1	1,493.1	3.6	3.2	-160.15	0.7	-24.0	85.0	78.5	6.49	13.095	
1,600.0	1,589.8	1,589.8	1,589.8	4.0	3.5	-164.04	0.7	-24.0	109.6	102.7	6.92	15.844	
1,700.0	1,685.4	1,685.4	1,685.4	4.5	3.7	-166.79	0.7	-24.0	137.8	130.5	7.34	18.780	
1,800.0	1,780.1	1,780.1	1,780.1	5.0	3.9	-168.99	0.7	-24.0	169.3	161.5	7.78	21.764	
1,900.0	1,874.6	1,874.6	1,874.6	5.5	4.1	-170.76	0.7	-24.0	201.5	193.3	8.25	24.418	
2,000.0	1,969.1	1,969.1	1,969.1	6.1	4.3	-172.05	0.7	-24.0	233.9	225.2	8.74	26.775	
2,100.0	2,063.6	2,063.6	2,063.6	6.7	4.5	-173.02	0.7	-24.0	266.4	257.1	9.22	28.878	
2,200.0	2,158.1	2,158.1	2,158.1	7.3	4.7	-173.78	0.7	-24.0	298.9	289.2	9.72	30.760	

CC - Min centre to center distance or convergent point, SF - min separation factor, ES - min ellipse separation

<b>Company:</b>	Synergy Resources	<b>Local Co-ordinate Reference:</b>	Well SRC State 16KD
<b>Project:</b>	SEC.16-T4N-R67W	<b>TVD Reference:</b>	WELL @ 4910.0ft (Original Well Elev)
<b>Reference Site:</b>	SRC-State Pad Sec.16-T4N-R67W	<b>MD Reference:</b>	WELL @ 4910.0ft (Original Well Elev)
<b>Site Error:</b>	0.0ft	<b>North Reference:</b>	True
<b>Reference Well:</b>	SRC State 16KD	<b>Survey Calculation Method:</b>	Minimum Curvature
<b>Well Error:</b>	0.0ft	<b>Output errors are at</b>	2.00 sigma
<b>Reference Wellbore</b>	Wellbore #1	<b>Database:</b>	EDM den0-adp01 Server Data
<b>Reference Design:</b>	Plan #1 (1-8-10)	<b>Offset TVD Reference:</b>	Offset Datum

Offset Design													Offset Site Error:	0.0ft	
Survey Program: 0-MWD													Offset Well Error:		0.0ft
Reference		Offset		Semi Major Axis			Distance						Warning		
Measured Depth (ft)	Vertical Depth (ft)	Measured Depth (ft)	Vertical Depth (ft)	Reference (ft)	Offset (ft)	Highside Tooface (°)	Offset Wellbore Centre +N/-S (ft)	+E/-W (ft)	Between Centres (ft)	Between Ellipses (ft)	Minimum Separation (ft)	Separation Factor			
2,300.0	2,252.6	2,252.6	2,252.6	7.9	5.0	-174.39	0.7	-24.0	331.4	321.2	10.21	32.453			
2,400.0	2,347.1	2,347.1	2,347.1	8.6	5.2	-174.90	0.7	-24.0	364.0	353.3	10.71	33.981			
2,500.0	2,441.6	2,441.6	2,441.6	9.2	5.4	-175.32	0.7	-24.0	396.6	385.4	11.21	35.366			
2,600.0	2,536.1	2,536.1	2,536.1	9.8	5.6	-175.67	0.7	-24.0	429.2	417.5	11.72	36.627			
2,700.0	2,630.6	2,630.6	2,630.6	10.4	5.8	-175.98	0.7	-24.0	461.9	449.6	12.23	37.779			
2,800.0	2,725.1	2,725.1	2,725.1	11.1	6.0	-176.24	0.7	-24.0	494.5	481.8	12.73	38.834			
2,900.0	2,819.6	2,819.6	2,819.6	11.7	6.2	-176.48	0.7	-24.0	527.1	513.9	13.24	39.805			
3,000.0	2,914.1	2,914.1	2,914.1	12.3	6.4	-176.68	0.7	-24.0	559.8	546.0	13.75	40.699			
3,100.0	3,008.6	3,008.6	3,008.6	13.0	6.7	-176.87	0.7	-24.0	592.5	578.2	14.27	41.527			
3,200.0	3,103.1	3,103.1	3,103.1	13.6	6.9	-177.03	0.7	-24.0	625.1	610.3	14.78	42.294			
3,300.0	3,197.6	3,197.6	3,197.6	14.3	7.1	-177.18	0.7	-24.0	657.8	642.5	15.29	43.008			
3,400.0	3,292.1	3,292.1	3,292.1	14.9	7.3	-177.31	0.7	-24.0	690.5	674.7	15.81	43.673			
3,500.0	3,386.6	3,386.6	3,386.6	15.5	7.5	-177.43	0.7	-24.0	723.1	706.8	16.33	44.293			
3,600.0	3,481.1	3,481.1	3,481.1	16.2	7.7	-177.54	0.7	-24.0	755.8	739.0	16.84	44.874			
3,700.0	3,575.6	3,575.6	3,575.6	16.8	7.9	-177.65	0.7	-24.0	788.5	771.1	17.36	45.419			
3,800.0	3,670.1	3,670.1	3,670.1	17.5	8.1	-177.74	0.7	-24.0	821.2	803.3	17.88	45.931			
3,900.0	3,764.6	3,764.6	3,764.6	18.1	8.3	-177.83	0.7	-24.0	853.9	835.5	18.40	46.412			
4,000.0	3,859.1	3,859.1	3,859.1	18.8	8.6	-177.91	0.7	-24.0	886.6	867.6	18.92	46.866			
4,100.0	3,953.6	3,953.6	3,953.6	19.4	8.8	-177.98	0.7	-24.0	919.2	899.8	19.44	47.294			
4,200.0	4,048.1	4,048.1	4,048.1	20.1	9.0	-178.05	0.7	-24.0	951.9	932.0	19.96	47.699			
4,300.0	4,143.0	4,143.0	4,143.0	20.6	9.2	-178.13	0.7	-24.0	983.4	962.9	20.54	47.877			
4,400.0	4,239.0	4,239.0	4,239.0	21.1	9.4	-178.20	0.7	-24.0	1,011.7	990.6	21.09	47.970			
4,500.0	4,335.8	4,335.8	4,335.8	21.5	9.6	-178.26	0.7	-24.0	1,036.5	1,014.9	21.61	47.969			
4,600.0	4,433.5	4,433.5	4,433.5	21.9	9.9	-178.31	0.7	-24.0	1,058.0	1,035.9	22.10	47.883			
4,700.0	4,531.8	4,531.8	4,531.8	22.2	10.1	-178.35	0.7	-24.0	1,076.1	1,053.5	22.55	47.718			
4,800.0	4,630.7	4,630.7	4,630.7	22.5	10.3	-178.38	0.7	-24.0	1,090.7	1,067.7	22.97	47.482			
4,900.0	4,730.1	4,730.1	4,730.1	22.7	10.5	-178.40	0.7	-24.0	1,101.8	1,078.5	23.35	47.178			
5,000.0	4,829.8	4,829.8	4,829.8	22.9	10.7	-178.42	0.7	-24.0	1,109.5	1,085.8	23.70	46.809			
5,100.0	4,929.7	4,929.7	4,929.7	23.0	11.0	-178.42	0.7	-24.0	1,113.7	1,089.7	24.01	46.379			
5,200.0	5,029.7	5,029.7	5,029.7	23.1	11.2	171.83	0.7	-24.0	1,114.6	1,090.2	24.32	45.823			
5,300.0	5,129.7	5,129.7	5,129.7	23.2	11.4	171.83	0.7	-24.0	1,114.6	1,089.8	24.72	45.079			
5,400.0	5,229.7	5,229.7	5,229.7	23.3	11.6	171.83	0.7	-24.0	1,114.6	1,089.4	25.13	44.356			
5,500.0	5,329.7	5,329.7	5,329.7	23.4	11.9	171.83	0.7	-24.0	1,114.6	1,089.0	25.53	43.653			
5,600.0	5,429.7	5,429.7	5,429.7	23.5	12.1	171.83	0.7	-24.0	1,114.6	1,088.6	25.94	42.970			
5,700.0	5,529.7	5,529.7	5,529.7	23.7	12.3	171.83	0.7	-24.0	1,114.6	1,088.2	26.35	42.306			
5,800.0	5,629.7	5,629.7	5,629.7	23.8	12.5	171.83	0.7	-24.0	1,114.6	1,087.8	26.75	41.661			
5,900.0	5,729.7	5,729.7	5,729.7	23.9	12.8	171.83	0.7	-24.0	1,114.6	1,087.4	27.16	41.033			
6,000.0	5,829.7	5,829.7	5,829.7	24.0	13.0	171.83	0.7	-24.0	1,114.6	1,087.0	27.57	40.422			
6,100.0	5,929.7	5,929.7	5,929.7	24.1	13.2	171.83	0.7	-24.0	1,114.6	1,086.6	27.99	39.827			
6,200.0	6,029.7	6,029.7	6,029.7	24.2	13.4	171.83	0.7	-24.0	1,114.6	1,086.2	28.40	39.248			
6,300.0	6,129.7	6,129.7	6,129.7	24.3	13.7	171.83	0.7	-24.0	1,114.6	1,085.8	28.81	38.685			
6,400.0	6,229.7	6,229.7	6,229.7	24.4	13.9	171.83	0.7	-24.0	1,114.6	1,085.3	29.23	38.136			
6,500.0	6,329.7	6,329.7	6,329.7	24.6	14.1	171.83	0.7	-24.0	1,114.6	1,084.9	29.64	37.601			
6,600.0	6,429.7	6,429.7	6,429.7	24.7	14.3	171.83	0.7	-24.0	1,114.6	1,084.5	30.06	37.080			
6,700.0	6,529.7	6,529.7	6,529.7	24.8	14.6	171.83	0.7	-24.0	1,114.6	1,084.1	30.48	36.572			
6,800.0	6,629.7	6,629.7	6,629.7	24.9	14.8	171.83	0.7	-24.0	1,114.6	1,083.7	30.89	36.077			
6,900.0	6,729.7	6,729.7	6,729.7	25.1	15.0	171.83	0.7	-24.0	1,114.6	1,083.3	31.31	35.595			
7,000.0	6,829.7	6,829.7	6,829.7	25.2	15.2	171.83	0.7	-24.0	1,114.6	1,082.8	31.73	35.124			
7,100.0	6,929.7	6,929.7	6,929.7	25.3	15.5	171.83	0.7	-24.0	1,114.6	1,082.4	32.15	34.664			
7,200.0	7,029.7	7,029.7	7,029.7	25.4	15.7	171.83	0.7	-24.0	1,114.6	1,082.0	32.57	34.216			
7,300.0	7,129.7	7,129.7	7,129.7	25.6	15.9	171.83	0.7	-24.0	1,114.6	1,081.6	33.00	33.779			
7,400.0	7,229.7	7,229.7	7,229.7	25.7	16.1	171.83	0.7	-24.0	1,114.6	1,081.1	33.42	33.352			

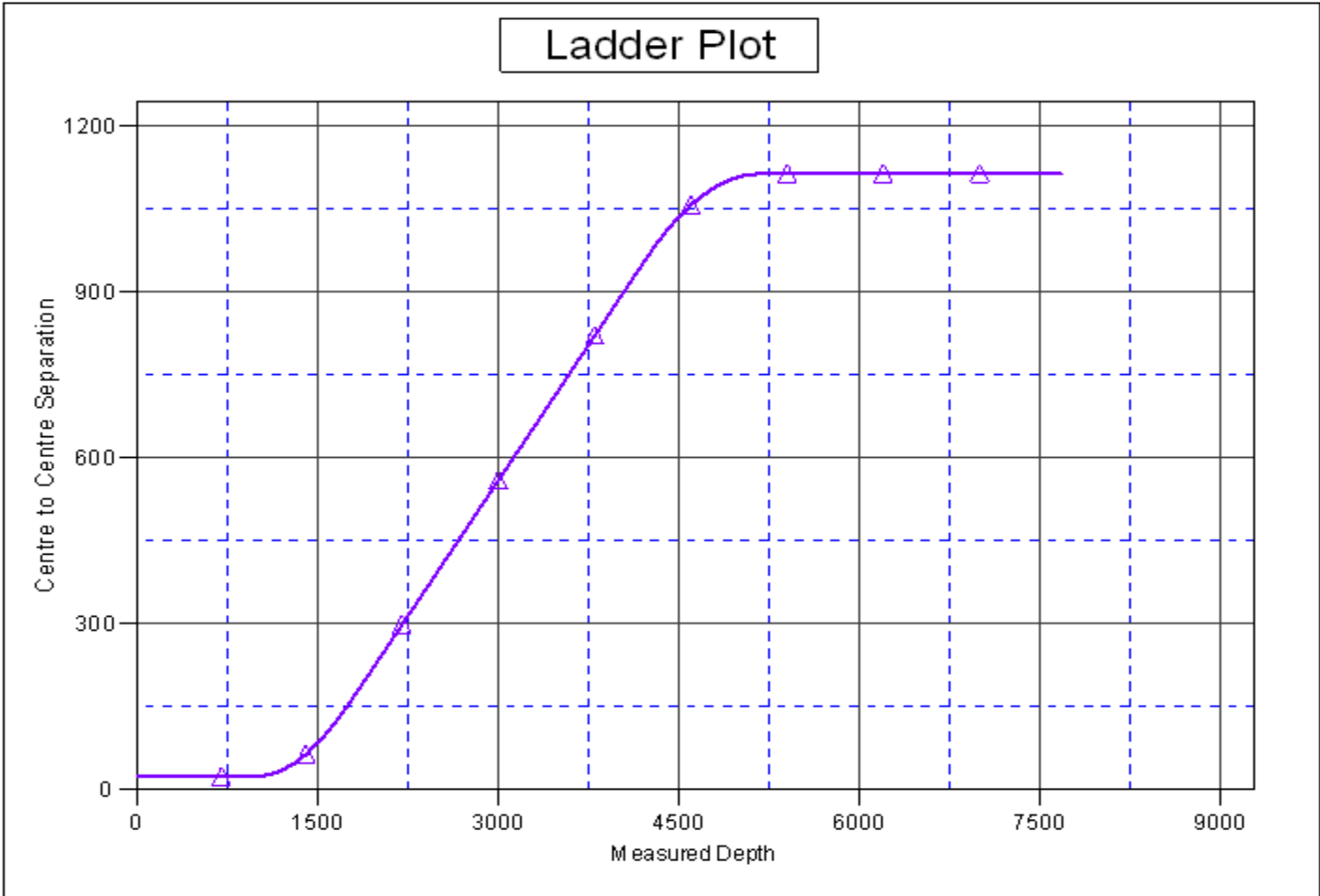
CC - Min centre to center distance or convergent point, SF - min separation factor, ES - min ellipse separation

<b>Company:</b>	Synergy Resources	<b>Local Co-ordinate Reference:</b>	Well SRC State 16KD
<b>Project:</b>	SEC.16-T4N-R67W	<b>TVD Reference:</b>	WELL @ 4910.0ft (Original Well Elev)
<b>Reference Site:</b>	SRC-State Pad Sec.16-T4N-R67W	<b>MD Reference:</b>	WELL @ 4910.0ft (Original Well Elev)
<b>Site Error:</b>	0.0ft	<b>North Reference:</b>	True
<b>Reference Well:</b>	SRC State 16KD	<b>Survey Calculation Method:</b>	Minimum Curvature
<b>Well Error:</b>	0.0ft	<b>Output errors are at</b>	2.00 sigma
<b>Reference Wellbore</b>	Wellbore #1	<b>Database:</b>	EDM den0-adp01 Server Data
<b>Reference Design:</b>	Plan #1 (1-8-10)	<b>Offset TVD Reference:</b>	Offset Datum

<b>Offset Design</b>												<b>Offset Site Error:</b>	0.0ft
SRC-State Pad Sec.16-T4N-R67W - SRC State 16B (Vert.) - Wellbore #1 - Design #1												<b>Offset Well Error:</b>	0.0ft
Survey Program: 0-MWD													
Reference		Offset		Semi Major Axis			Distance						
Measured Depth (ft)	Vertical Depth (ft)	Measured Depth (ft)	Vertical Depth (ft)	Reference (ft)	Offset (ft)	Highside Toolface (°)	Offset Wellbore Centre +N/-S (ft)	+E/-W (ft)	Between Centres (ft)	Between Ellipses (ft)	Minimum Separation (ft)	Separation Factor	Warning
7,500.0	7,329.7	7,329.7	7,329.7	25.8	16.4	171.83	0.7	-24.0	1,114.6	1,080.7	33.84	32.934	
7,600.0	7,429.7	7,429.7	7,429.7	26.0	16.6	171.83	0.7	-24.0	1,114.6	1,080.3	34.27	32.527	
7,675.3	7,505.0	7,505.0	7,505.0	26.1	16.8	171.83	0.7	-24.0	1,114.6	1,080.0	34.59	32.226	

<b>Company:</b>	Synergy Resources	<b>Local Co-ordinate Reference:</b>	Well SRC State 16KD
<b>Project:</b>	SEC.16-T4N-R67W	<b>TVD Reference:</b>	WELL @ 4910.0ft (Original Well Elev)
<b>Reference Site:</b>	SRC-State Pad Sec.16-T4N-R67W	<b>MD Reference:</b>	WELL @ 4910.0ft (Original Well Elev)
<b>Site Error:</b>	0.0ft	<b>North Reference:</b>	True
<b>Reference Well:</b>	SRC State 16KD	<b>Survey Calculation Method:</b>	Minimum Curvature
<b>Well Error:</b>	0.0ft	<b>Output errors are at</b>	2.00 sigma
<b>Reference Wellbore</b>	Wellbore #1	<b>Database:</b>	EDM den0-adp01 Server Data
<b>Reference Design:</b>	Plan #1 (1-8-10)	<b>Offset TVD Reference:</b>	Offset Datum

Reference Depths are relative to WELL @ 4910.0ft (Original Well Elev) Coordinates are relative to: SRC State 16KD  
 Offset Depths are relative to Offset Datum Coordinate System is US State Plane 1983, Colorado Northern Zone  
 Central Meridian is 105° 30' 0.000 W ° Grid Convergence at Surface is: 0.39°

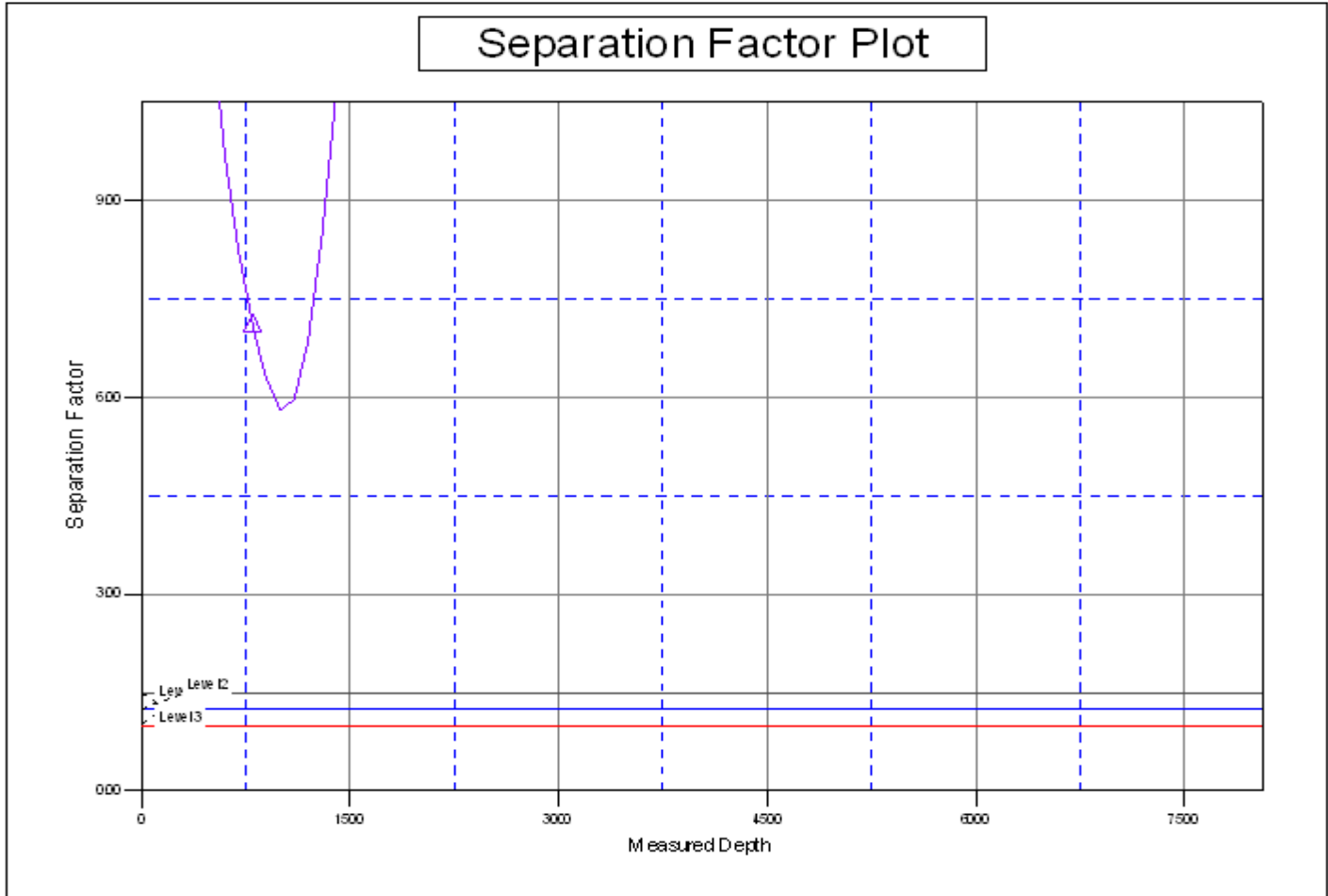


LEGEND

SRC State 16 B (Vert.), Wellbore #1, Design # 1 VD

<b>Company:</b>	Synergy Resources	<b>Local Co-ordinate Reference:</b>	Well SRC State 16KD
<b>Project:</b>	SEC.16-T4N-R67W	<b>TVD Reference:</b>	WELL @ 4910.0ft (Original Well Elev)
<b>Reference Site:</b>	SRC-State Pad Sec.16-T4N-R67W	<b>MD Reference:</b>	WELL @ 4910.0ft (Original Well Elev)
<b>Site Error:</b>	0.0ft	<b>North Reference:</b>	True
<b>Reference Well:</b>	SRC State 16KD	<b>Survey Calculation Method:</b>	Minimum Curvature
<b>Well Error:</b>	0.0ft	<b>Output errors are at</b>	2.00 sigma
<b>Reference Wellbore</b>	Wellbore #1	<b>Database:</b>	EDM den0-adp01 Server Data
<b>Reference Design:</b>	Plan #1 (1-8-10)	<b>Offset TVD Reference:</b>	Offset Datum

Reference Depths are relative to WELL @ 4910.0ft (Original Well Elev) Coordinates are relative to: SRC State 16KD  
 Offset Depths are relative to Offset Datum Coordinate System is US State Plane 1983, Colorado Northern Zone  
 Central Meridian is 105° 30' 0.000 W ° Grid Convergence at Surface is: 0.39°



LEGEND

SRC State 16 B (Vert.), Wellbore # 1, Design # 1 \VD