



01760432

Suite 2000
Denver, CO 80202

Tel: 303.228.4000
Fax: 303.228.4280

www.nobleenergyinc.com



February 18, 2010

Colorado Oil and Gas Conservation Commission
The Chancery Building
1120 Lincoln Street, Suite 801
Denver, CO 80203

Attn: Mr. David Neslin, Director

RE: Aloysius C34-31
Codell/Niobrara New Drill
Township 4 North, Range 64 West, 6th P.M.
Section 34: NW/4NW/4: 1296' FNL & 192' FWL (Surface Location)
Section 34: NW/4NW/4: 1296' FNL & 192' FWL (Bottom Hole Location)
Weld County, Colorado

Mr. Neslin:

Noble Energy, Inc. ("NEI") is planning to drill the captioned boundary well in accordance with the provisions of COGCC Rule 318A.e.

NEI's proposed wellbore spacing unit consists of the W/2NW/4 in Section 34 and the E/2NE/4 in Section 33, T4N, R 64W, creating a 160-acre wellbore spacing unit. NEI is the only owner within the proposed wellbore spacing unit, therefore NEI hereby attests that no notice letters are required under COGCC Rule 318A.e.(6).

Also, enclosed are copies of the following documents to assist you in your review and approval of NEI's proposed APD for the captioned well:

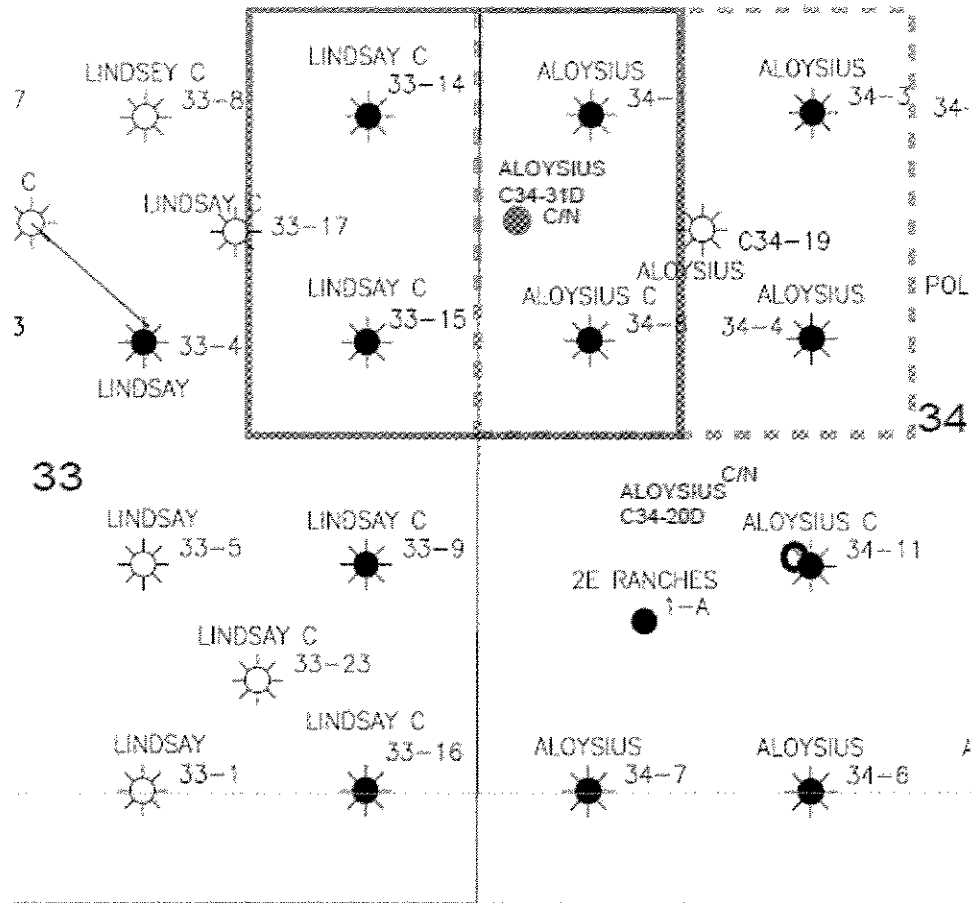
- Plat illustrating the proposed wellbore spacing unit and number of Codell/Niobrara wells located within the existing 160-acre governmental quarter section (NW/4) to be less than eight (8) in accordance with COGCC Rule 318A.f.
- Plat illustrating proposed wellbore spacing unit on existing location plat.

Thank you for your attention to the enclosed. NEI respectfully requests that the COGCC review the enclosed information and approve the Application for Permit to Drill the captioned well.

Sincerely,

Kate Miller
Regulatory Specialist
Noble Energy Inc.

ALOYSIUS C 34-31
NWNW, Section 34, T4N, R64W



LEGEND



Proposed 160 acre Spacing Unit



Bottom Hole Located NWNW, Sec 34, T4N, R64W

The governmental ¼ Section has less than 8 bottom hole wells producing from the Codell, Niobrara, & J-Sand Formations.

Proposed 318Ac Spacing Unit

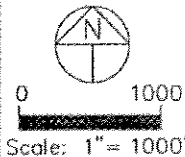
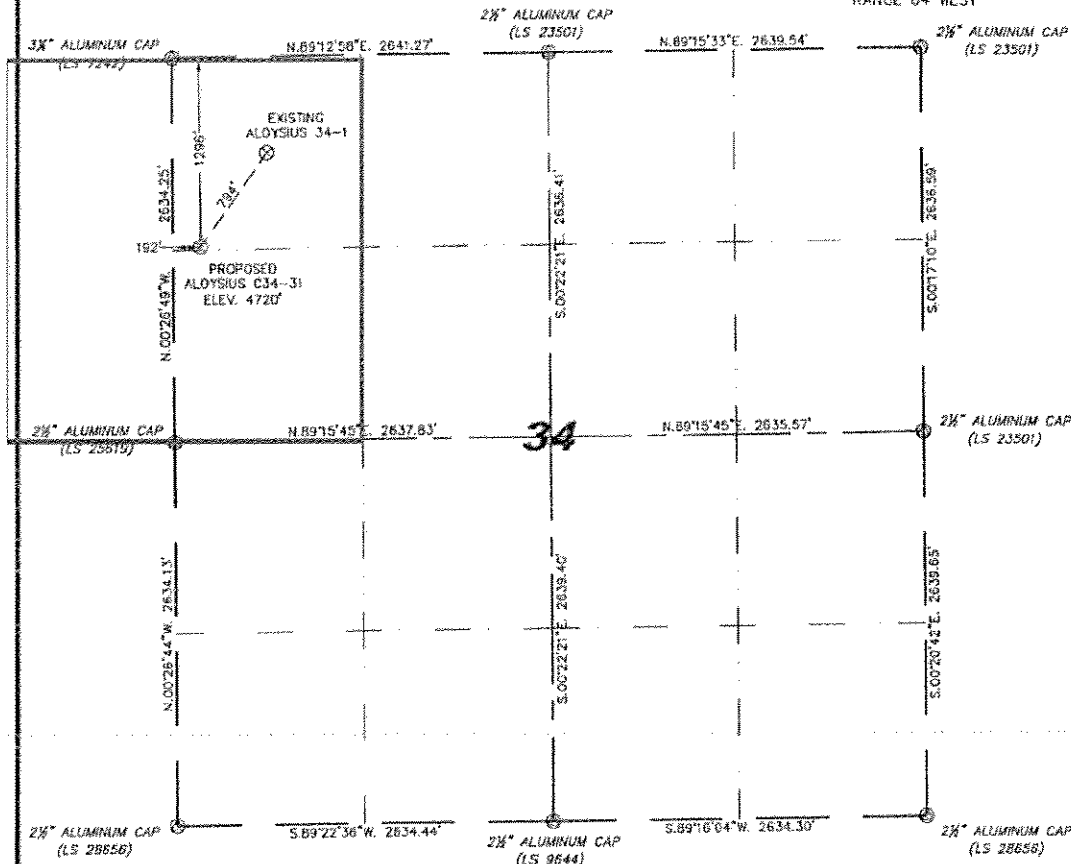
Stell Surveying Services, LLC

1102 West 19th Street P.O. BOX 2073

Cheyenne, Wyoming 82009

WELL LOCATION CERTIFICATE THIS MAP DOES NOT REPRESENT A BOUNDARY SURVEY

SECTION 34
TOWNSHIP 4 NORTH
RANGE 64 WEST



IN ACCORDANCE WITH A REQUEST FROM ERK VAN BECAR - NOBLE ENERGY INC. STELL SURVEYING SERVICES, LLC HAS DETERMINED THE LOCATION OF THE ALOYSIUS C34-31 WELL TO BE 1296' FNL, 192' FNL, AS MEASURED AT NINETY (90) DEGREES FROM THE SECTION LINES, SECTION 34, TOWNSHIP 4 NORTH, RANGE 64 WEST, 6TH PRINCIPLE MERIDIAN, WELD COUNTY, COLORADO.

I HEREBY CERTIFY THAT THIS WELL LOCATION CERTIFICATE WAS PREPARED BY ME, OR UNDER MY DIRECT SUPERVISION, THAT THE FIELD WORK WAS COMPLETED ON 09/15/2009, FOR AND ON BEHALF OF NOBLE ENERGY INC, THAT IT IS NOT A LAND SURVEY PLAT OR AN IMPROVEMENT SURVEY PLAT, AND THAT IT IS NOT TO BE RELIED UPON FOR ESTABLISHMENT OF FENCE, BUILDING, OR OTHER FUTURE IMPROVEMENT LINES.

NOTES:

- 1) BASIS OF BEARINGS FOR THIS MAP ARE BASED UPON GPS OBSERVATIONS MADE ON 09/15/2009 BETWEEN MONUMENTS LOCATED AT THE SOUTHEAST SECTION CORNER AND THE NORTHEAST SECTION CORNERS OF SAID SECTION AND WITH ALL BEARINGS SHOWN HEREON RELATIVE THERETO.
- 2) ELEVATIONS ARE BASED UPON NGS GNSS SOLUTION NAVD 83 DATUM.
- 3) THE NEAREST EXISTING WELL IS: ALOYSIUS 34-1, 794' NORTHEAST.
- 4) SEE VISIBLE IMPROVEMENTS EXHIBIT FOR ALL IMPROVEMENTS WITHIN 400'.
- 5) THE LOCATION FALLS IN PASTURE LAND.

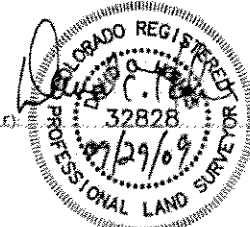
LATITUDE & LONGITUDE (NAD 83 SURFACE HOLE):
LATITUDE: N 40.27265°
LONGITUDE: W 104.84582°
POOP: 2.0
QUARTER-QUARTER: NW/4NW/4
NEAREST PROPERTY LINE: 192' TO THE WEST

LEGEND

- (*) FOUND SURVEY MONUMENT PER MONUMENT RECORD - EXEMPTIONS NOTED.
- (C) CALCULATED DIMENSION

David C. Holmes
Professional Land Surveyor Registration No. 32828
State of Colorado

JOB #: 090288



Completed 09/16/2009

NOTICE: According to Colorado law you MUST commence any legal action based upon any defect in this RLC within three years after you first discover such defect. In no event may any action based upon any defect in this RLC be commenced more than two years from this date of the certification shown herein.