

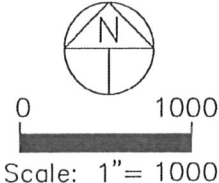
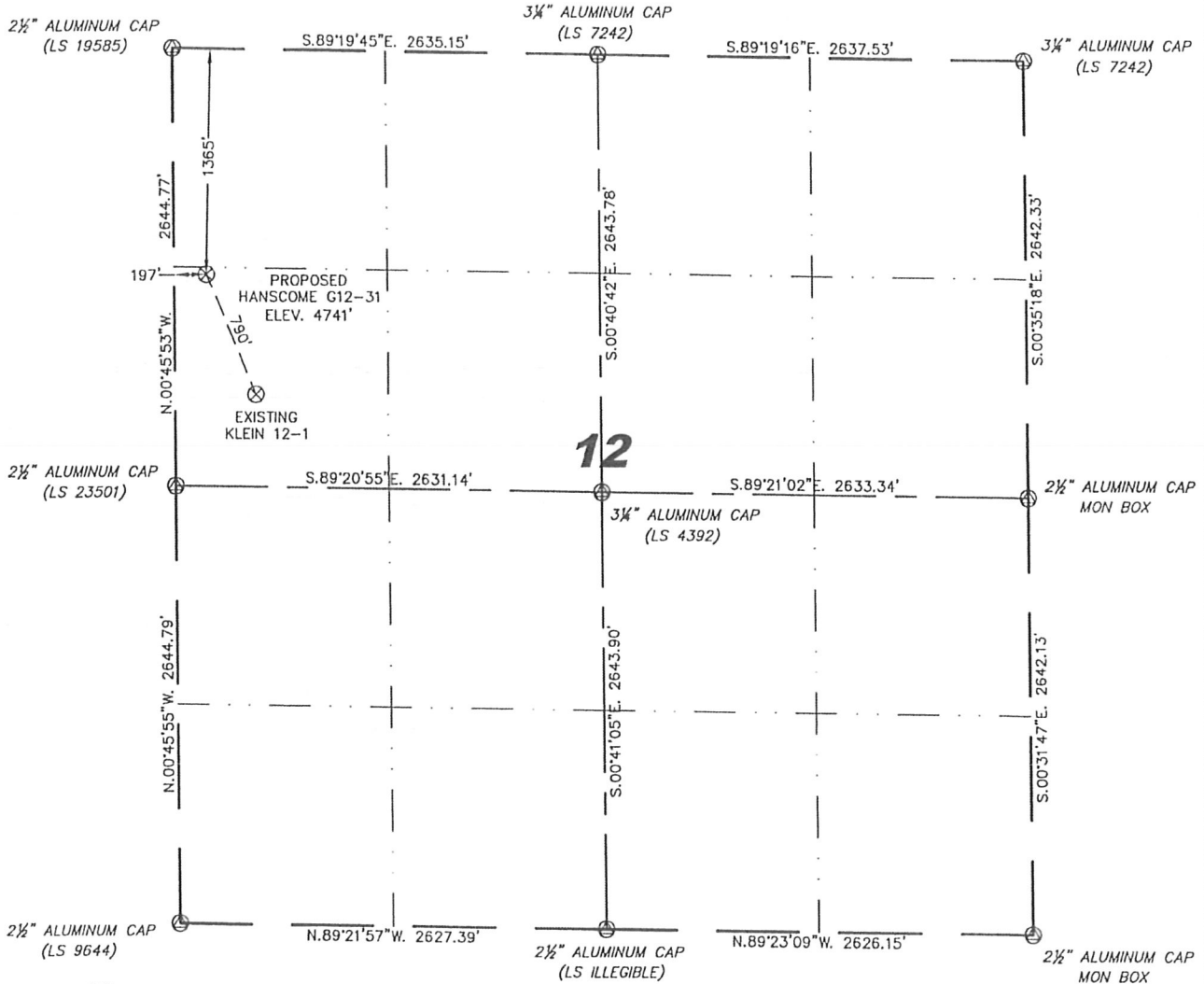
Stell Surveying Services, LLC

1102 West 19th Street P.O. BOX 2073

Cheyenne, Wyoming 82009

WELL LOCATION CERTIFICATE
THIS MAP DOES NOT REPRESENT A BOUNDARY SURVEY

SECTION 12
TOWNSHIP 4 NORTH
RANGE 65 WEST



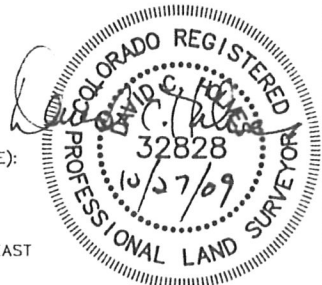
IN ACCORDANCE WITH A REQUEST FROM JOE MARTIN - NOBLE ENERGY INC, STELL SURVEYING SERVICES, LLC HAS DETERMINED THE LOCATION OF THE HANSCOME G12-31 WELL TO BE 1365' FNL, 197' FWL, AS MEASURED AT NINETY (90) DEGREES FROM THE SECTION LINES, SECTION 12, TOWNSHIP 4 NORTH, RANGE 65 WEST, 6TH PRINCIPLE MERIDIAN, WELD COUNTY, COLORADO.

I HEREBY CERTIFY THAT THIS WELL LOCATION CERTIFICATE WAS PREPARED BY ME, OR UNDER MY DIRECT SUPERVISION, THAT THE FIELD WORK WAS COMPLETED ON 10/15/2009, FOR AND ON BEHALF OF NOBLE ENERGY INC, THAT IT IS NOT A LAND SURVEY PLAT OR AN IMPROVEMENT SURVEY PLAT, AND THAT IT IS NOT TO BE RELIED UPON FOR ESTABLISHMENT OF FENCE, BUILDING, OR OTHER FUTURE IMPROVEMENT LINES.

NOTES:

- 1) BASIS OF BEARINGS FOR THIS MAP ARE BASED UPON GPS OBSERVATIONS MADE ON 07/08/2008 BETWEEN MONUMENTS LOCATED AT THE SOUTHEAST SECTION CORNER AND THE NORTHEAST SECTION CORNER OF SAID SECTION AND WITH ALL BEARINGS SHOWN HEREON RELATIVE THERETO.
- 2) ELEVATIONS ARE BASED UPON NGS OPUS SOLUTION NAVD 88 DATUM.
- 3) THE NEAREST EXISTING WELL IS: KLEIN 12-1, 790' SOUTHEAST.
- 4) SEE VISIBLE IMPROVEMENTS EXHIBIT FOR ALL IMPROVEMENTS WITHIN 400'.
- 5) THE LOCATION FALLS IN PASTURE LAND.

LATITUDE & LONGITUDE (NAD 83 SURFACE HOLE):
 LATITUDE: N 40.33049°
 LONGITUDE: W 104.62023°
 PDOP: 2.2
 QUARTER-QUARTER: SW/4NW/4
 NEAREST PROPERTY LINE: 140' TO THE NORTHEAST



LEGEND

NOTICE: According to Colorado law you MUST commence any legal action based upon any defect in this W.L.C. within three years after you first discover such defect. In no event may any action based upon any defect in this W.L.C. be commenced more than ten years from this sold date of the certification shown hereon.

- (A) FOUND SURVEY MONUMENT PER MONUMENT RECORD - EXCEPTIONS NOTED.
- (C) CALCULATED DIMENSION

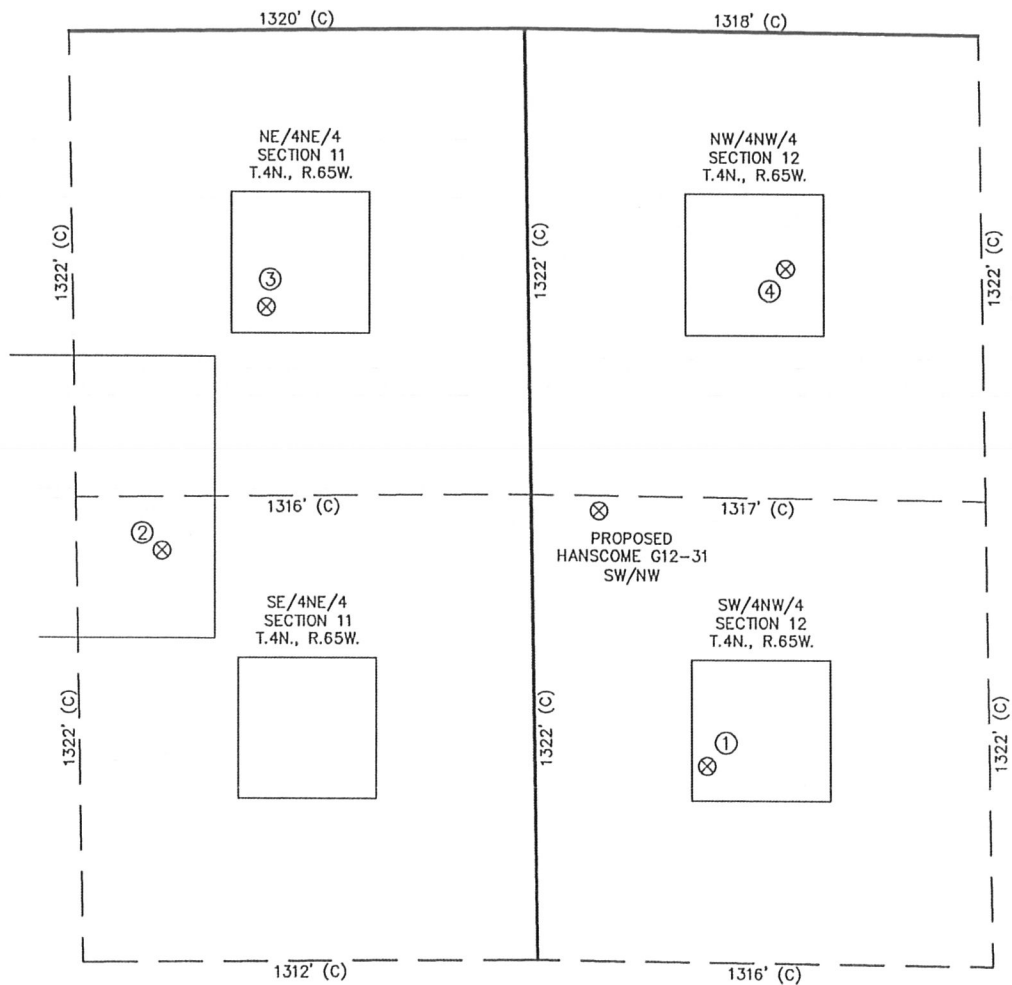
David C. Holmes
 Professional Land Surveyor Registration No. 32828
 State of Colorado

Completed 10/20/2009

JOB #: 09086

SITE SKETCH – HANSCOME G12-31

SECTION 12
TOWNSHIP 4 NORTH
RANGE 65 WEST



①	②	③	④
KLEIN 12-1 SW/NW SEC. 12 2086' FNL 501' FWL EL 4746' N 40.32849 W 104.61913 PDOP 2.2	HANSCOME 2 SE/NE SEC. 11 1476' FNL 1070' FEL EL 4710' N 40.33020 W 104.62477 PDOP 1.9	HANSCOME 11-7 NE/NE SEC. 11 786' FNL 759' FEL EL 4707' N 40.33209 W 104.62366 PDOP 2.2	EASTON 2 NW/NW SEC. 12 672' FNL 749' FWL EL 4754' N 40.33236 W 104.61826 PDOP 2.2

NOTES:
1) THIS SKETCH DOES NOT REPRESENT A BOUNDARY SURVEY.
2) THE DATUM FOR THE LATITUDES AND LONGITUDES ON THIS SKETCH IS NAD83.

