



02099088



CEMENT BOND LOG

D.A.

Company MARATHON OIL COMPANY
 Well 596-31A-21
 Field GRAND VALLEY
 County GARFIELD
 State COLORADO

Company MARATHON OIL COMPANY
 Well 596-31A-21
 Field GRAND VALLEY
 County GARFIELD State COLORADO

Location: API #: 05045150840000
 SEC: 31 TWP: 5S RGE: 96W
 787' FWL & 1675' FEL
 Permanent Datum GROUND LEVEL Elevation 8418'
 Log Measured From KELLEY BUSHING
 Drilling Measured From KELLEY BUSHING
 Other Services GAUGE
 Elevation K.B. 8442'
 D.F. 8441'
 G.L. 8418'

Date	16 JULY 2009				
Run Number	ONE				
Depth Driller	9955'				
Depth Logger	9860'				
Bottom Logged Interval	9860'				
Top Log Interval	7900'				
Open Hole Size	8.75"				
Type Fluid	WATER				
Density / Viscosity	8.34-				
Max. Recorded Temp.	N/A				
Estimated Cement Top	8136'				
Time Well Ready	N/A				
Time Logger on Bottom	N/A				
Equipment Number	ST0501W/RBT 003				
Location	GRAND JUNCTION				
Recorded By	B. MAYNARICH				
Witnessed By	J. PENELL				
Borehole Record					
Run Number	Bit	From	To	Size	Tubing Record
					Weight
					From
					To
Casing Record	Size	Wd/Ft	Top	Bottom	
Surface String	9.625"	N/A	SURFACE	2660'	
Prot. String					
Production String	4.5"	11.6#	SURFACE	TD	
Liner					

<<< Fold Here >>>

All interpretations are opinions based on inferences from electrical or other measurements and we cannot and do not guarantee the accuracy or correctness of any interpretation, and we shall not, except in the case of gross or willful negligence on our part, be liable or responsible for any loss, costs, damages, or expenses incurred or sustained by anyone resulting from any interpretation made by any of our officers, agents or employees. These interpretations are also subject to our general terms and conditions set out in our current Price Schedule.

Comments

RBT-GR-TEMP RAN IN COMBINATION.
 CORRELATED TO BAKER ATLAS RADIAL ANALYSIS LOG DATED 10 DEC 2008.
 MAIN PASS RERUN WITH 1000 PSI.
 LOG INTERVALS PER CUSTOMER REQUEST.

RECEIVED
 AUG 26 2009
 COGCC

WE APPRECIATE YOUR BUSINESS, MESA WIRELINE LLC, GRAND JUNCTION CO. (970) 257-0



MAIN LOG SECTION, 1000 PSI

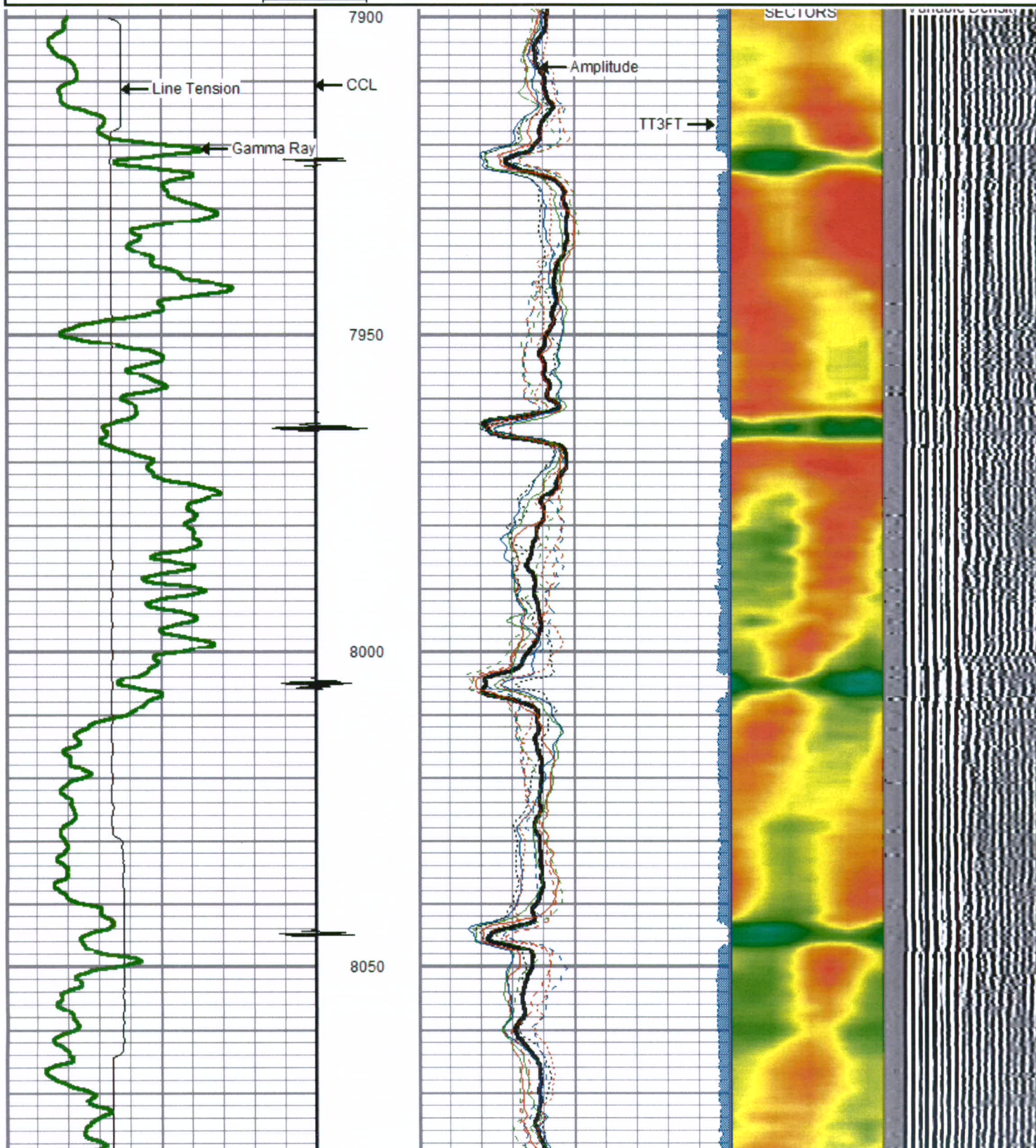
5" - 100'

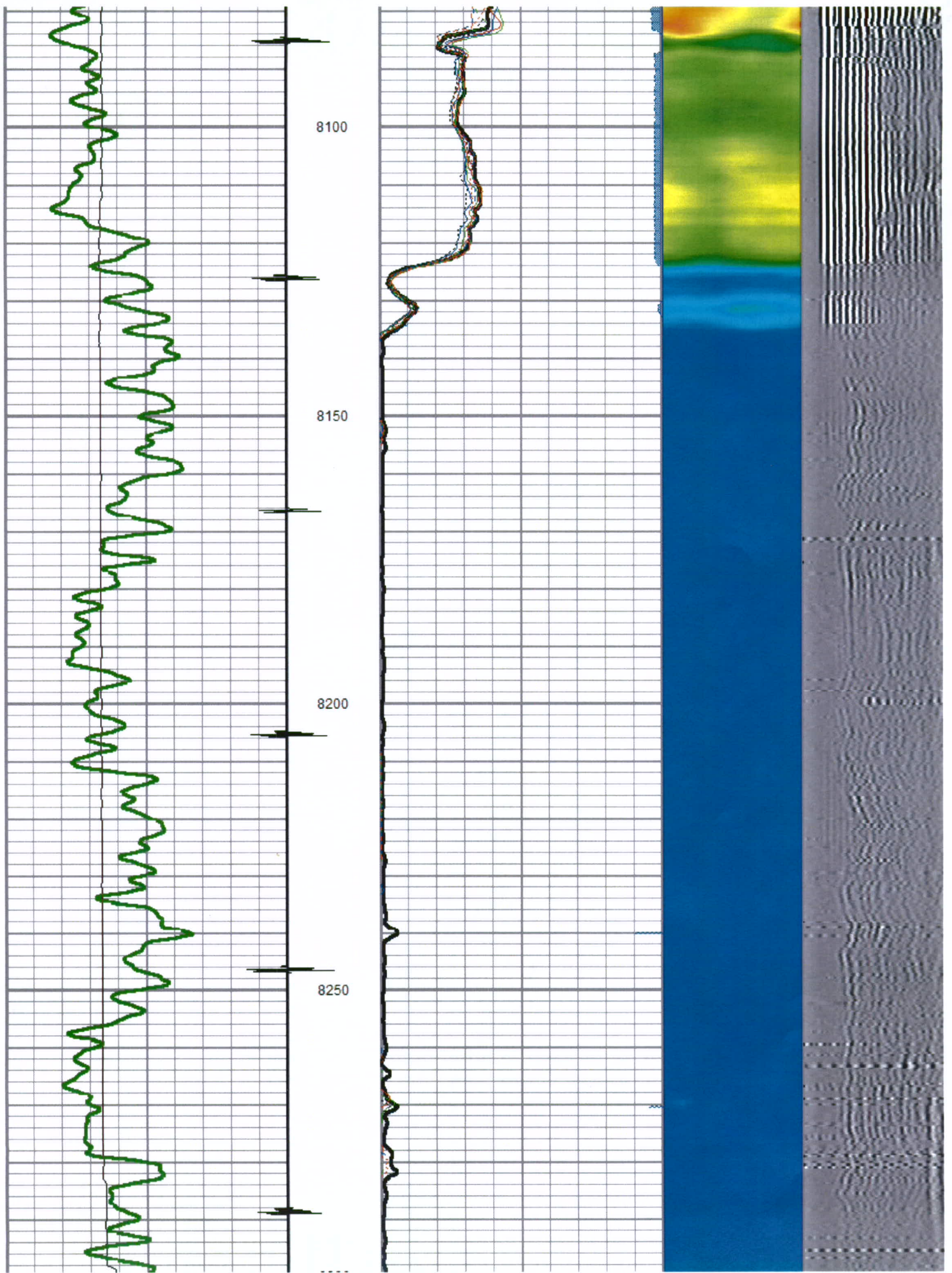
Mesa Wireline

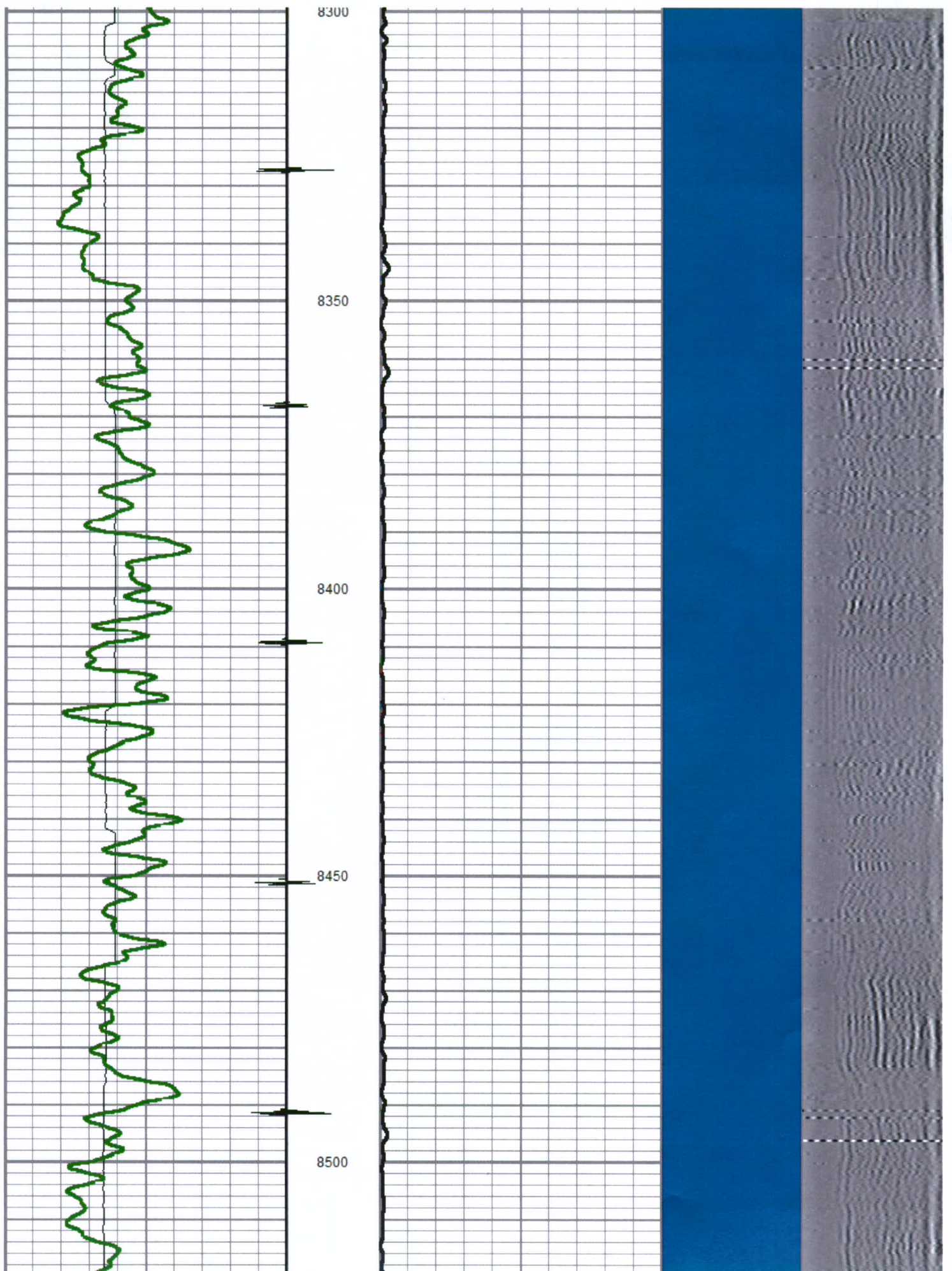
5 = 100

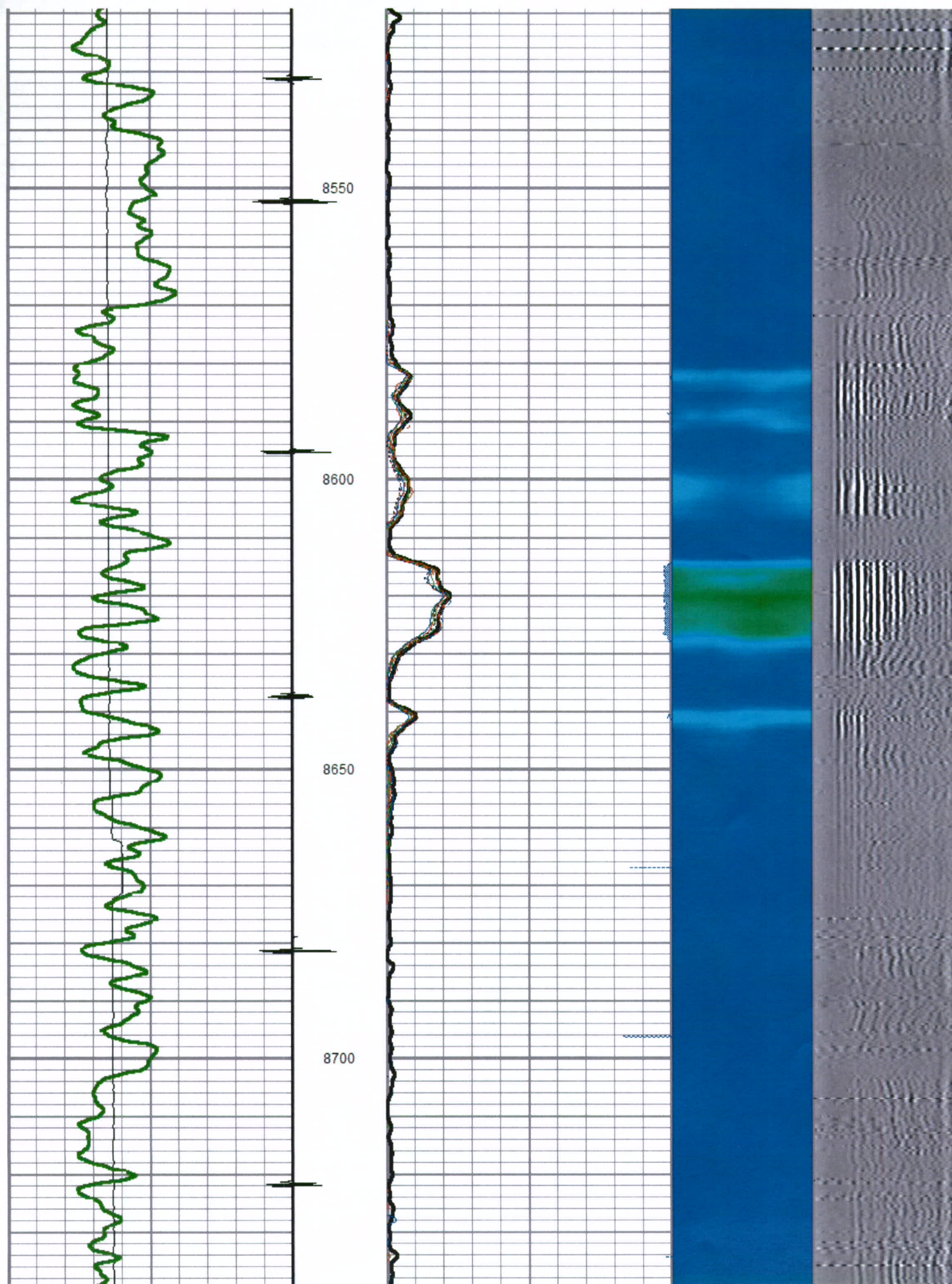
Database File: 596-31a-21.db
 Dataset Pathname: pass12
 Presentation Format: rbt_fin
 Dataset Creation: Thu Jul 16 15:43:46 2009 by Log Std Casedhole 08121
 Charted by: Depth in Feet scaled 1:240

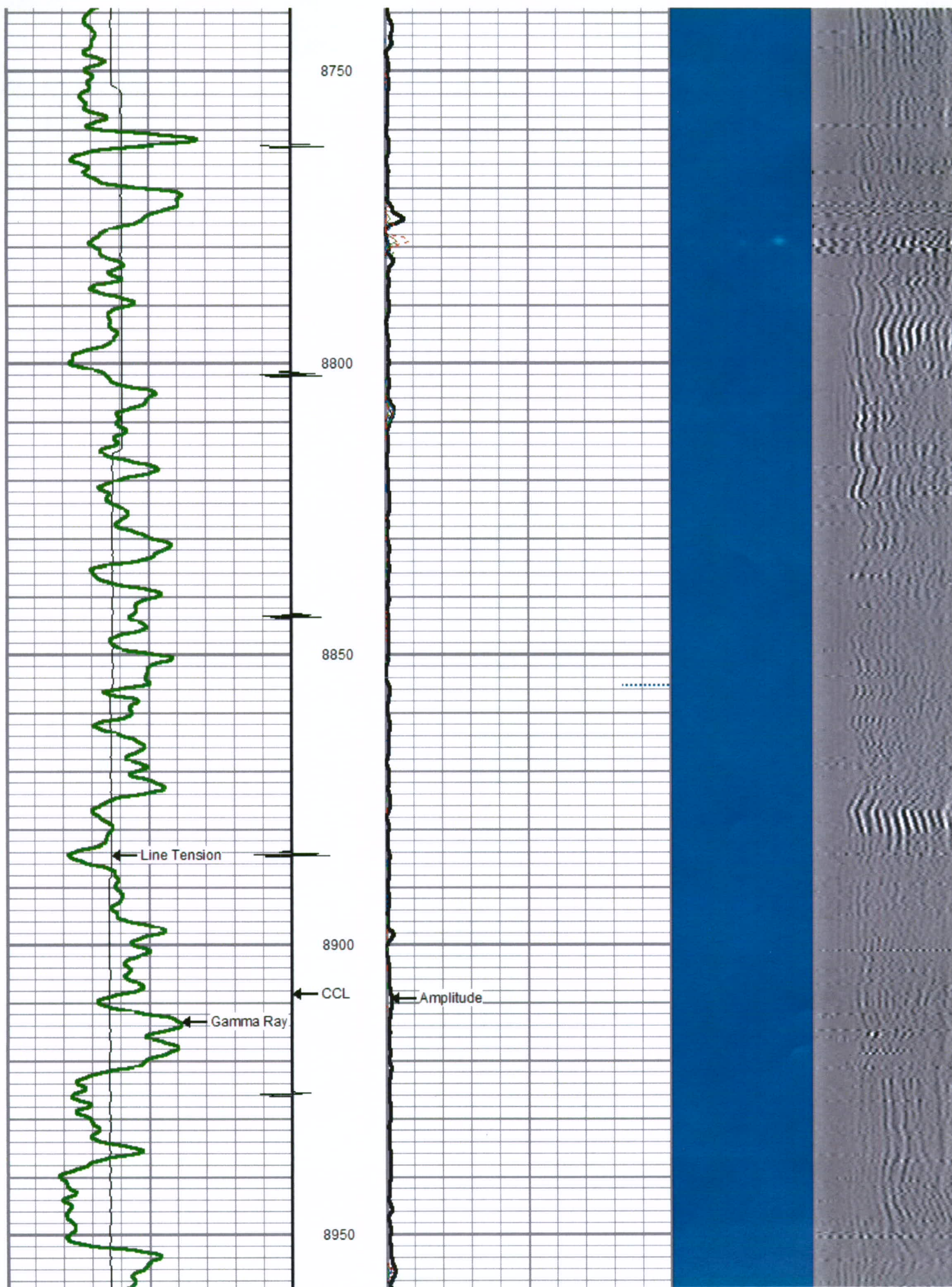
0	LTEN (lb)	4000	0	Amplitude (mV)	100	1	SECTORS	8	Variable Density
0	GR (GAPI)	200	0	TT3FT (usec)	205	0		70	200 1200
CCL									

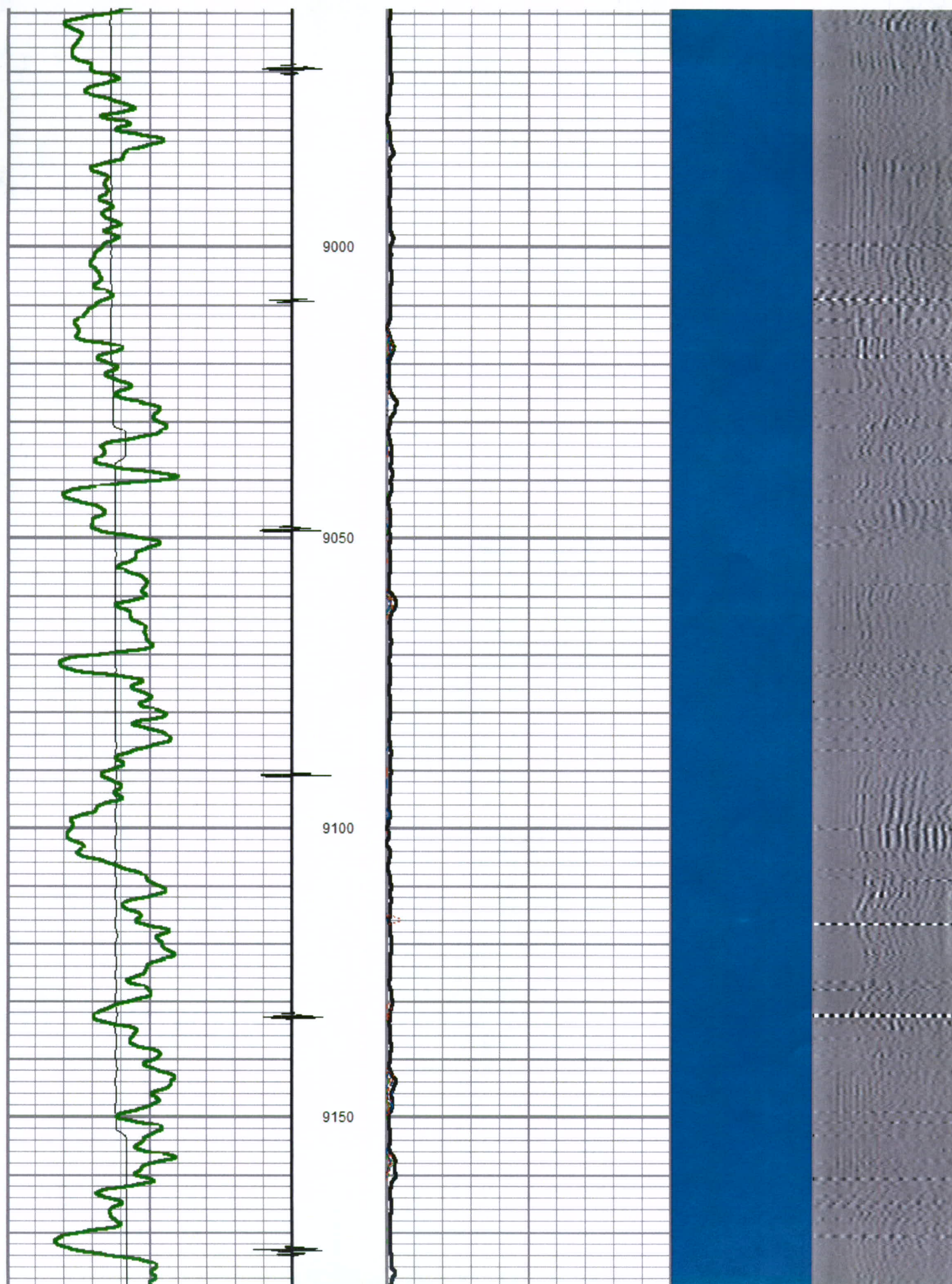


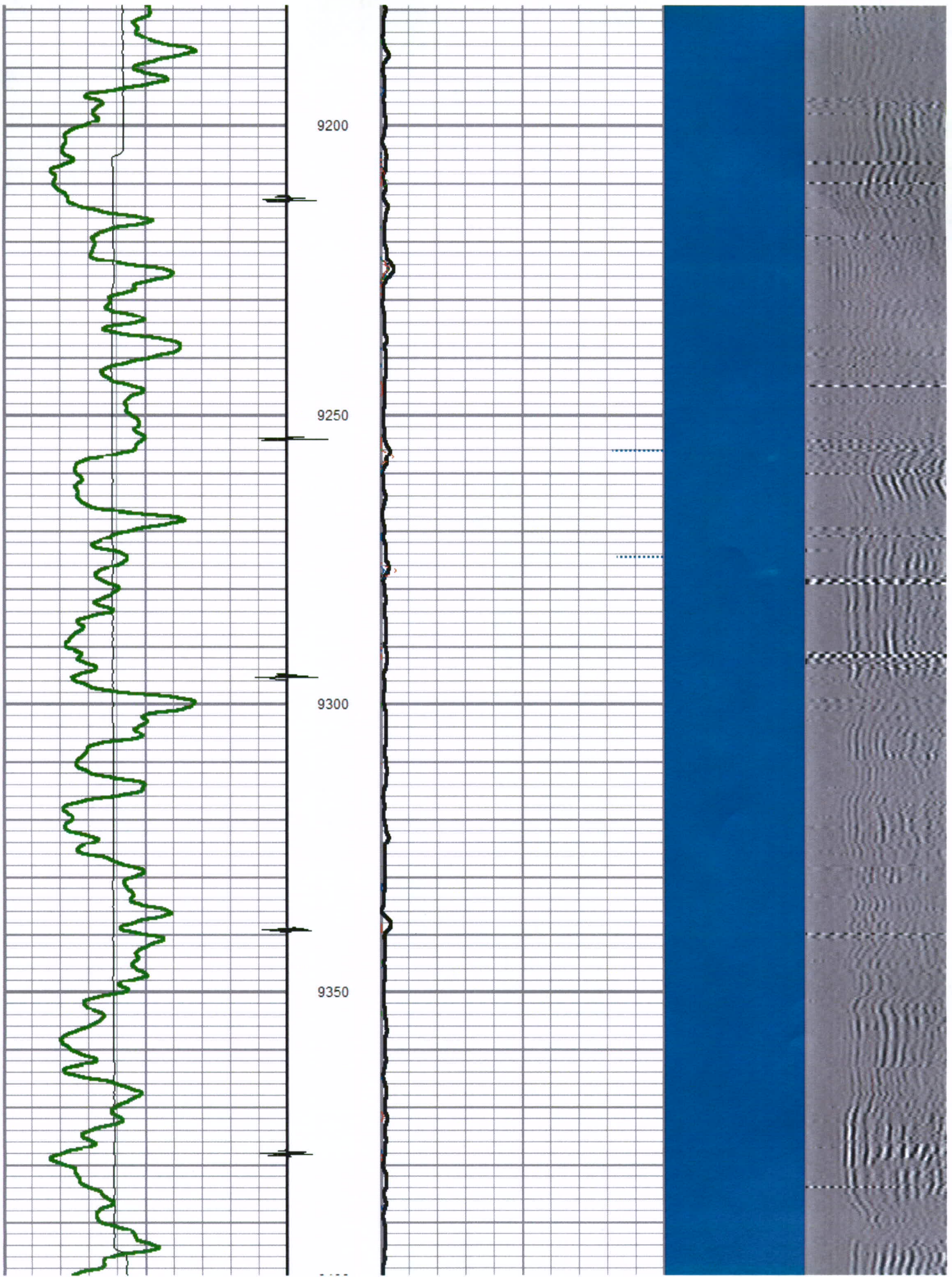


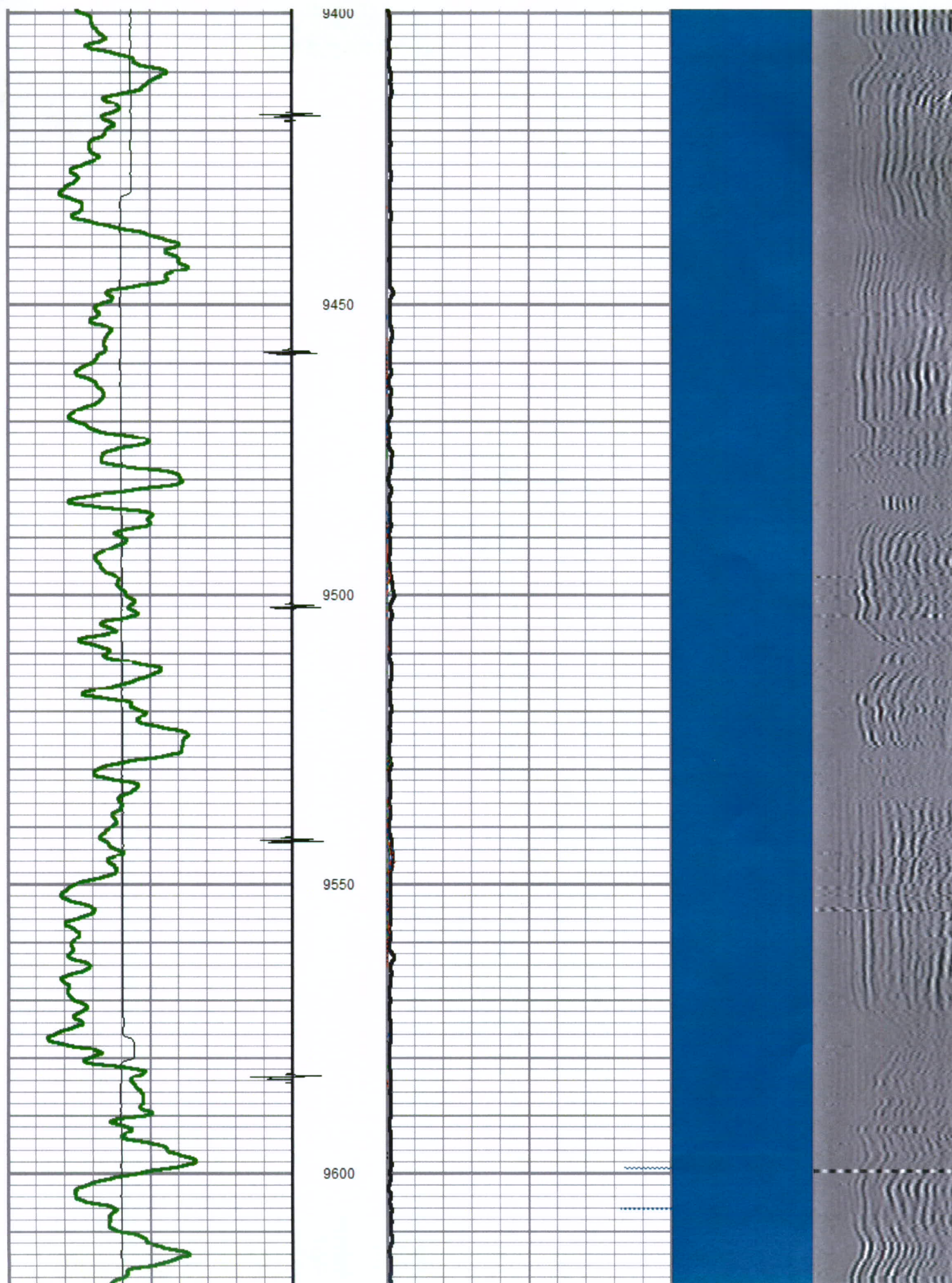


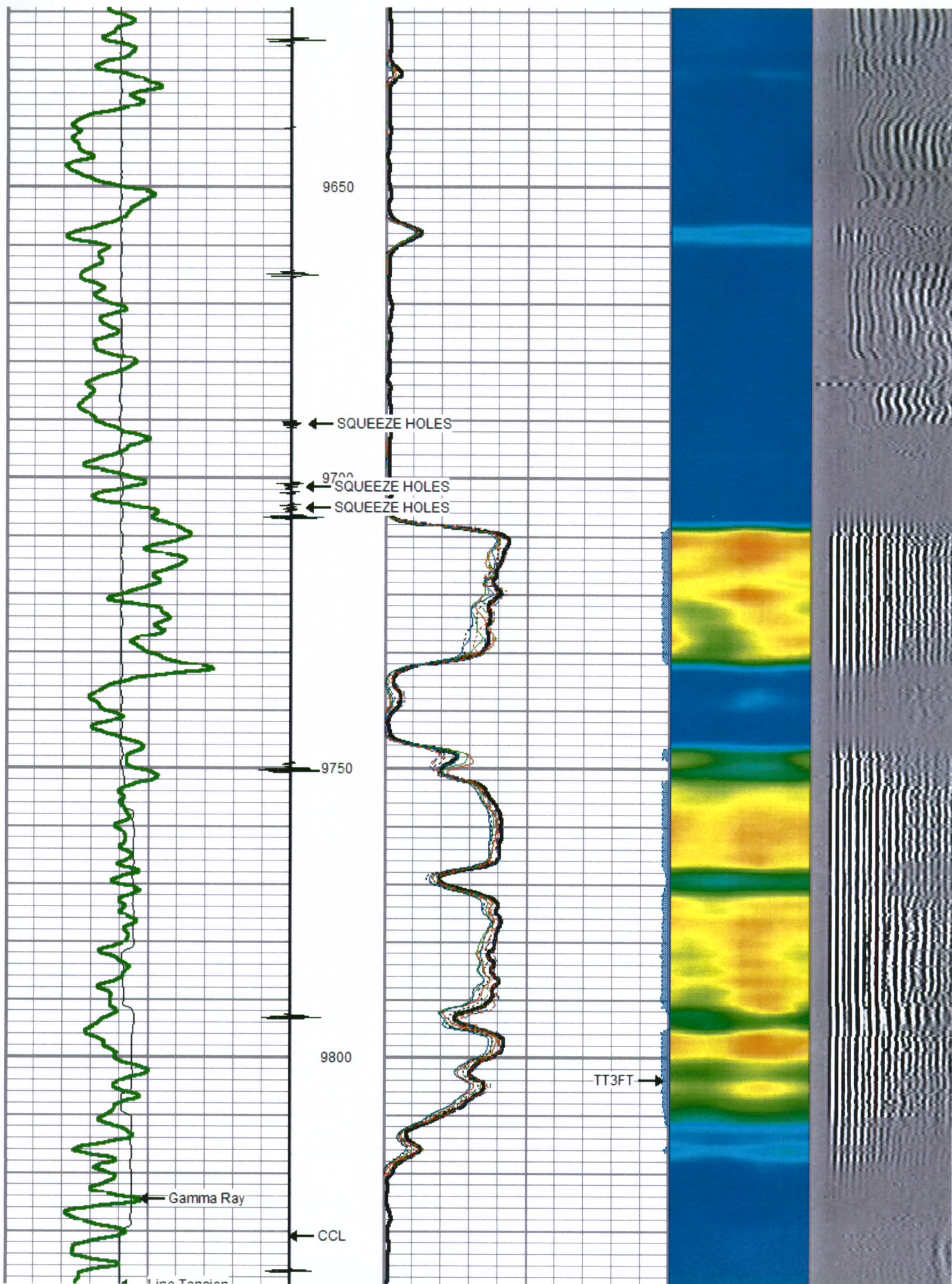


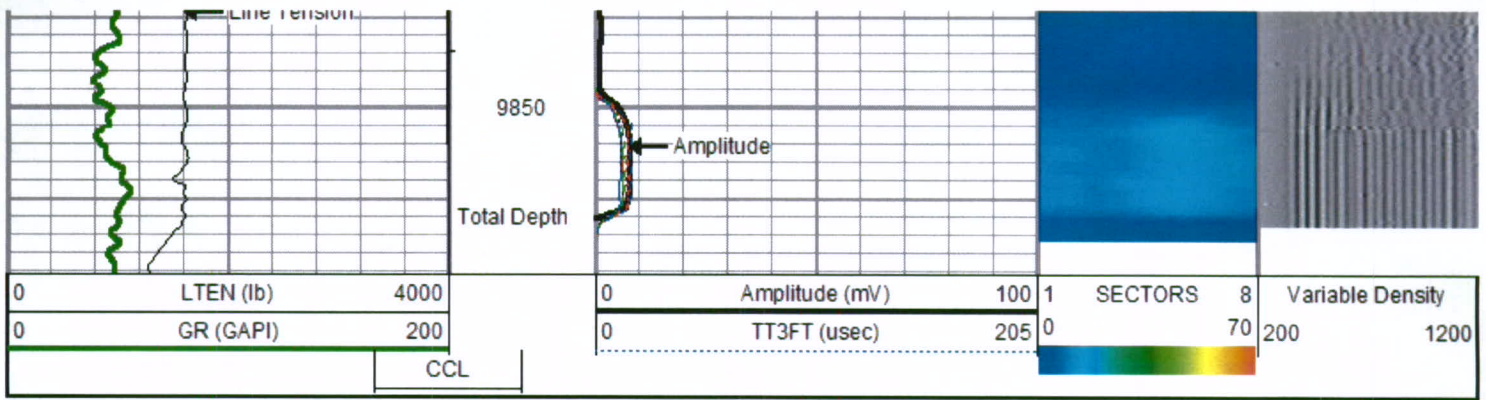








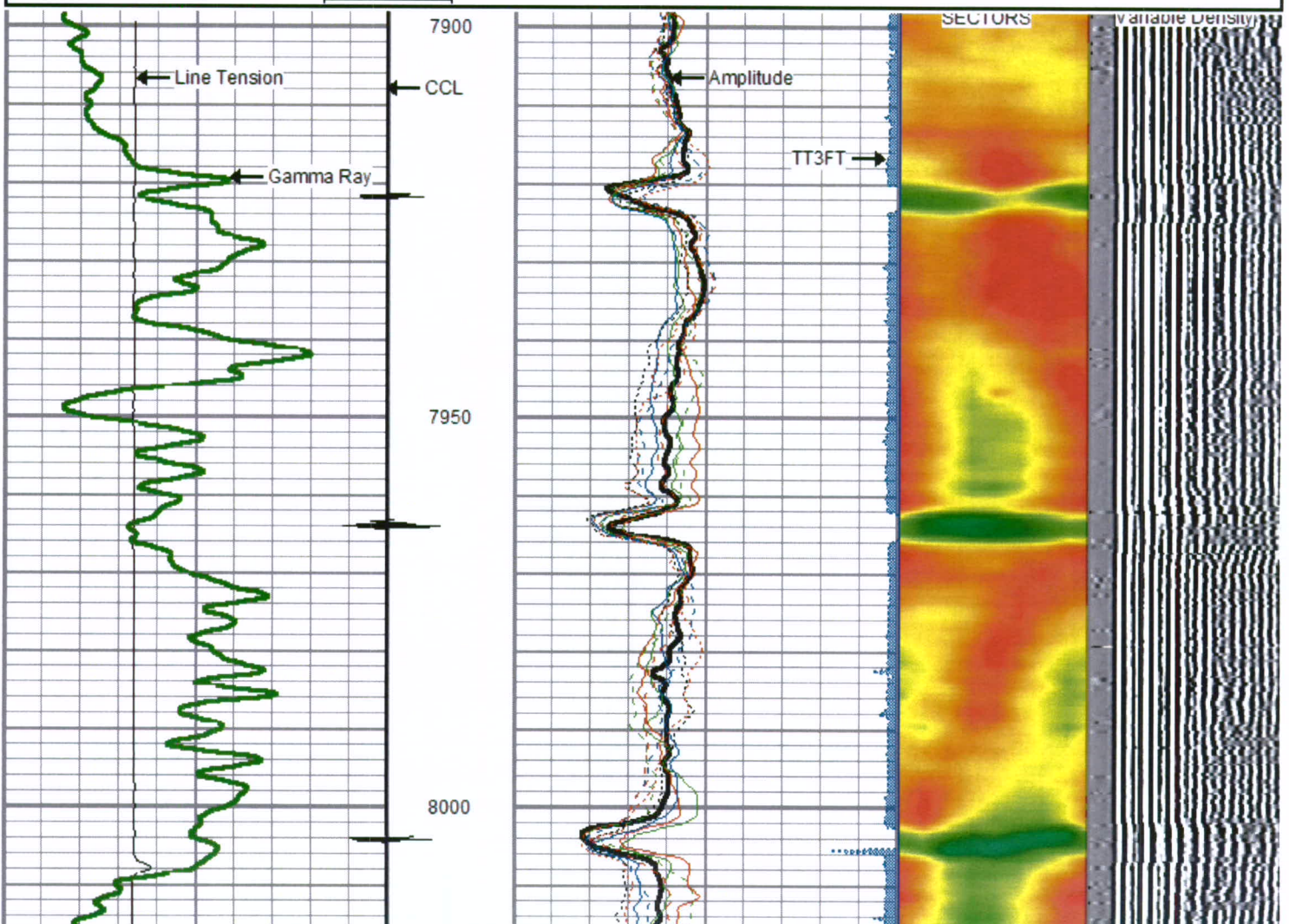
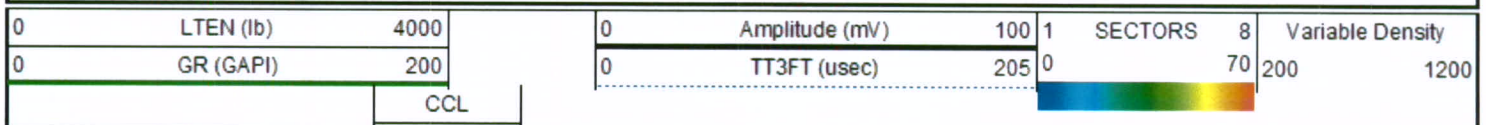


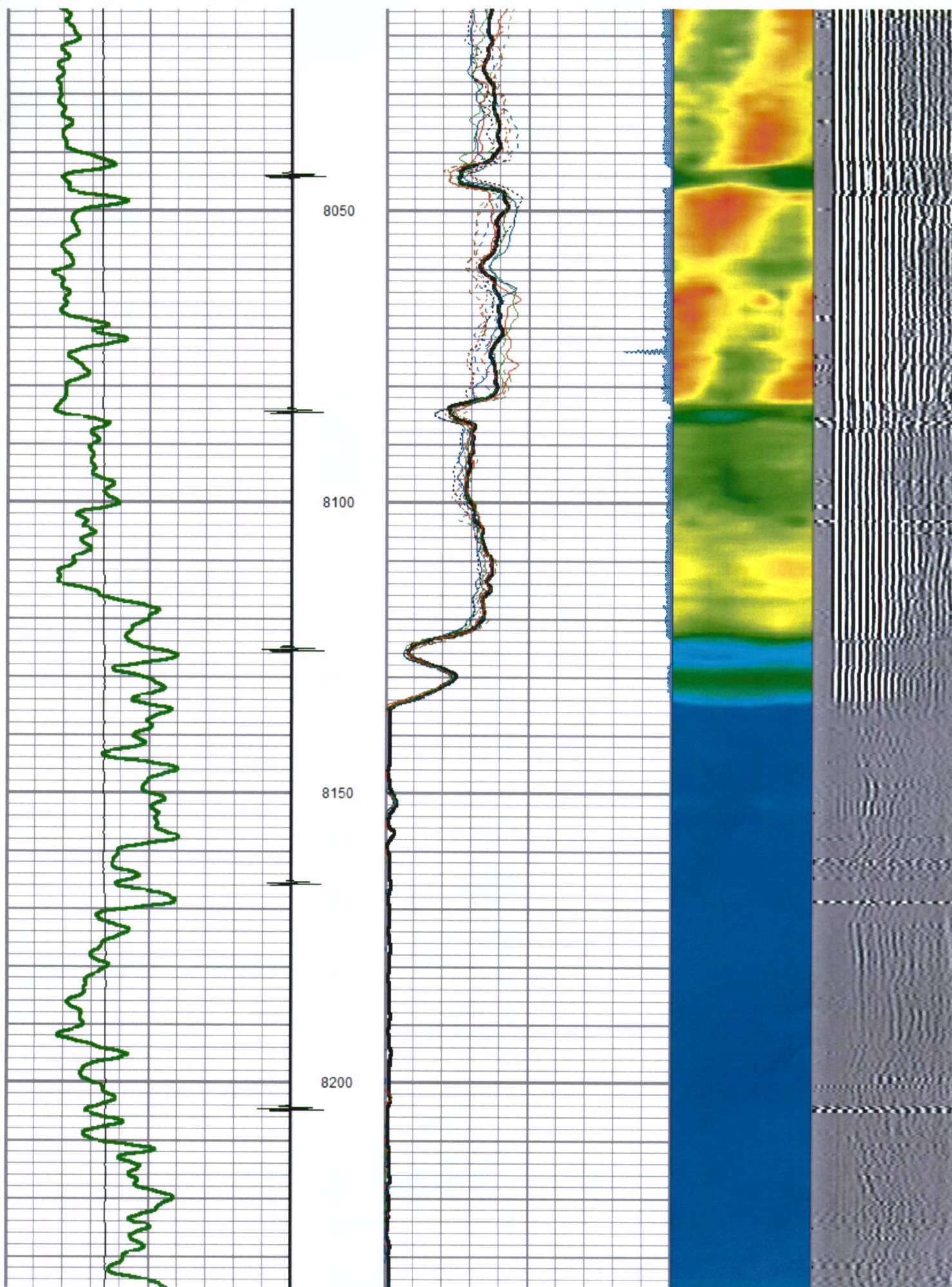


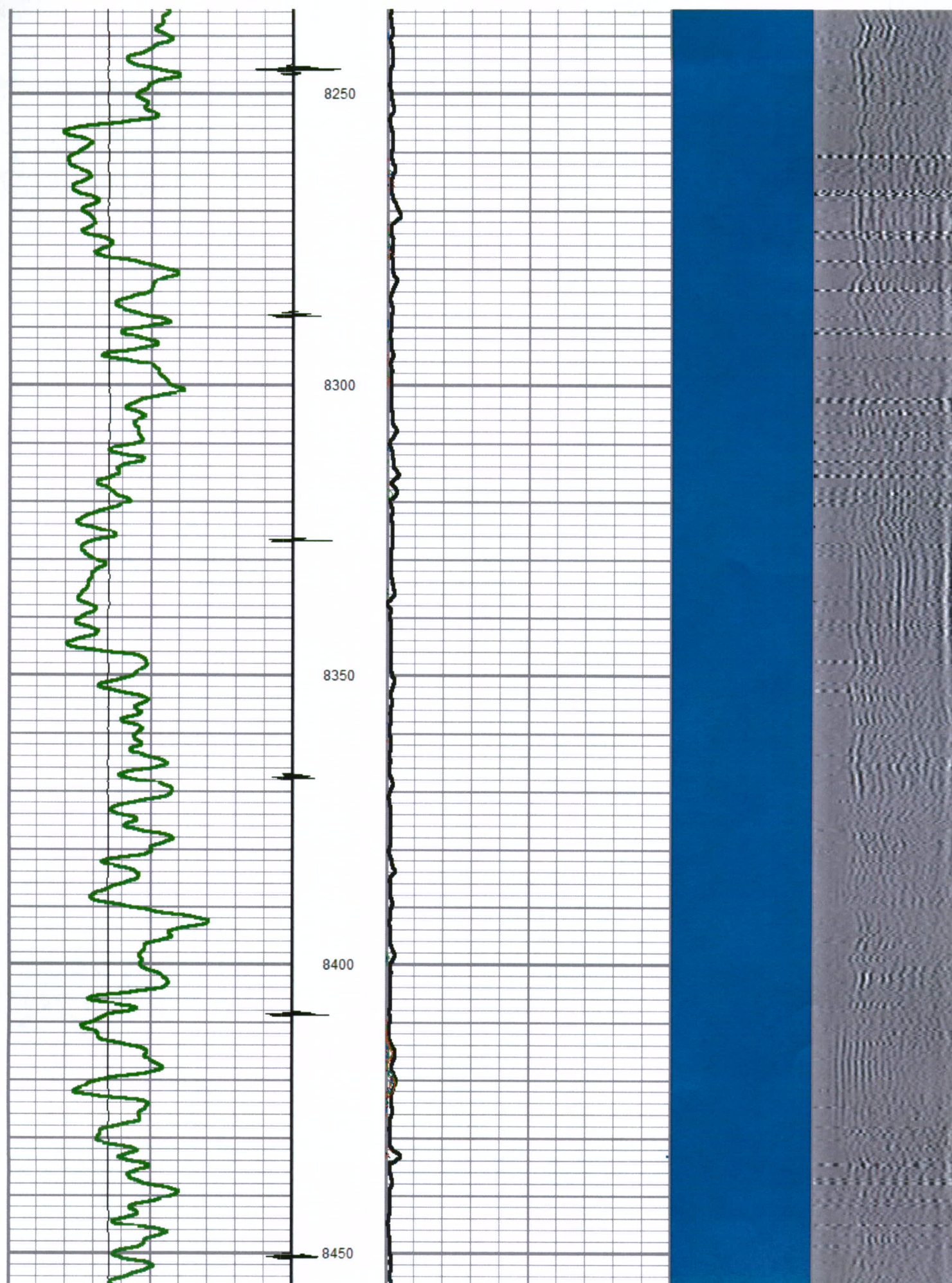
MAIN LOG SECTION, 0 PSI

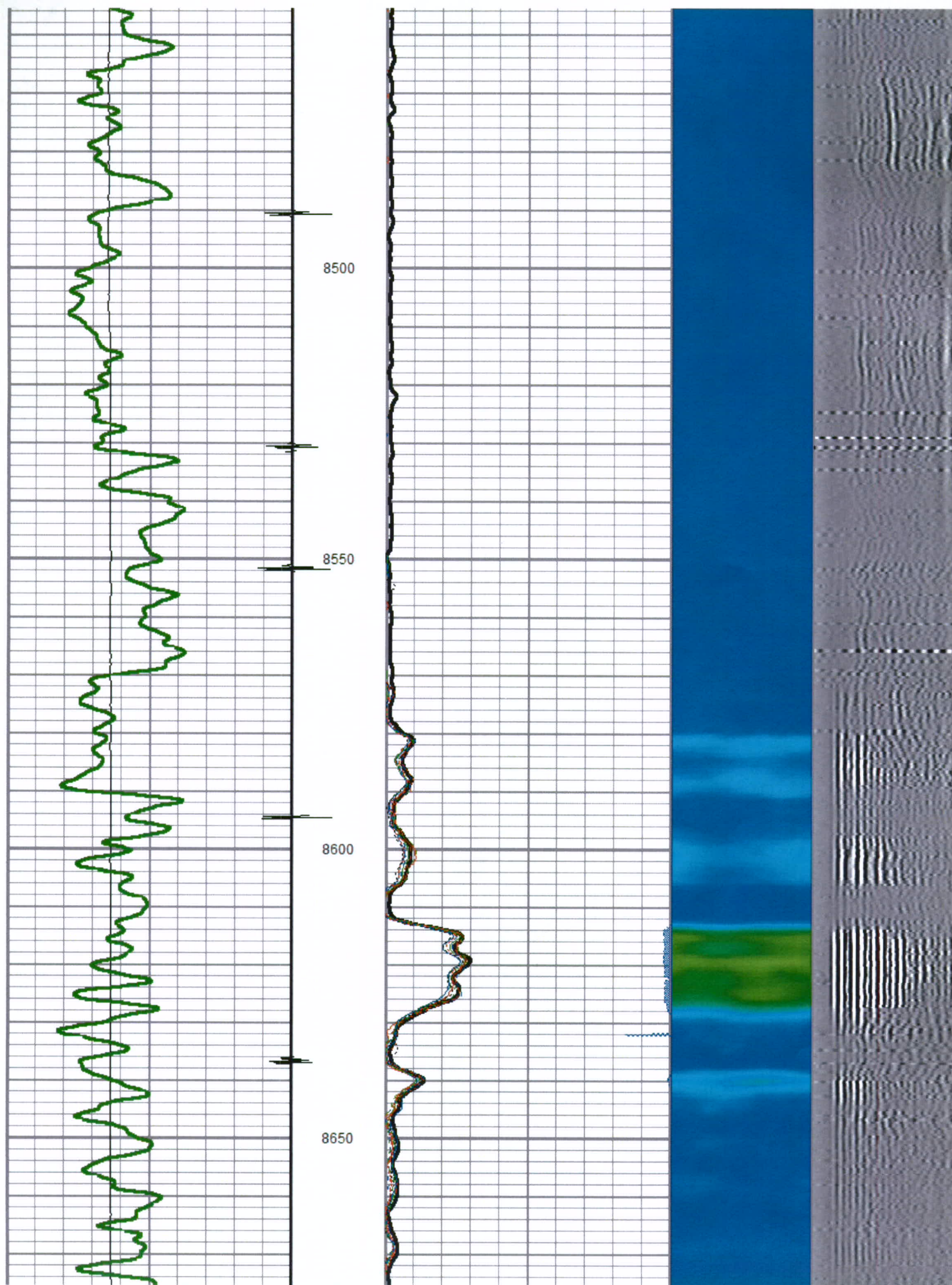
5" = 100'

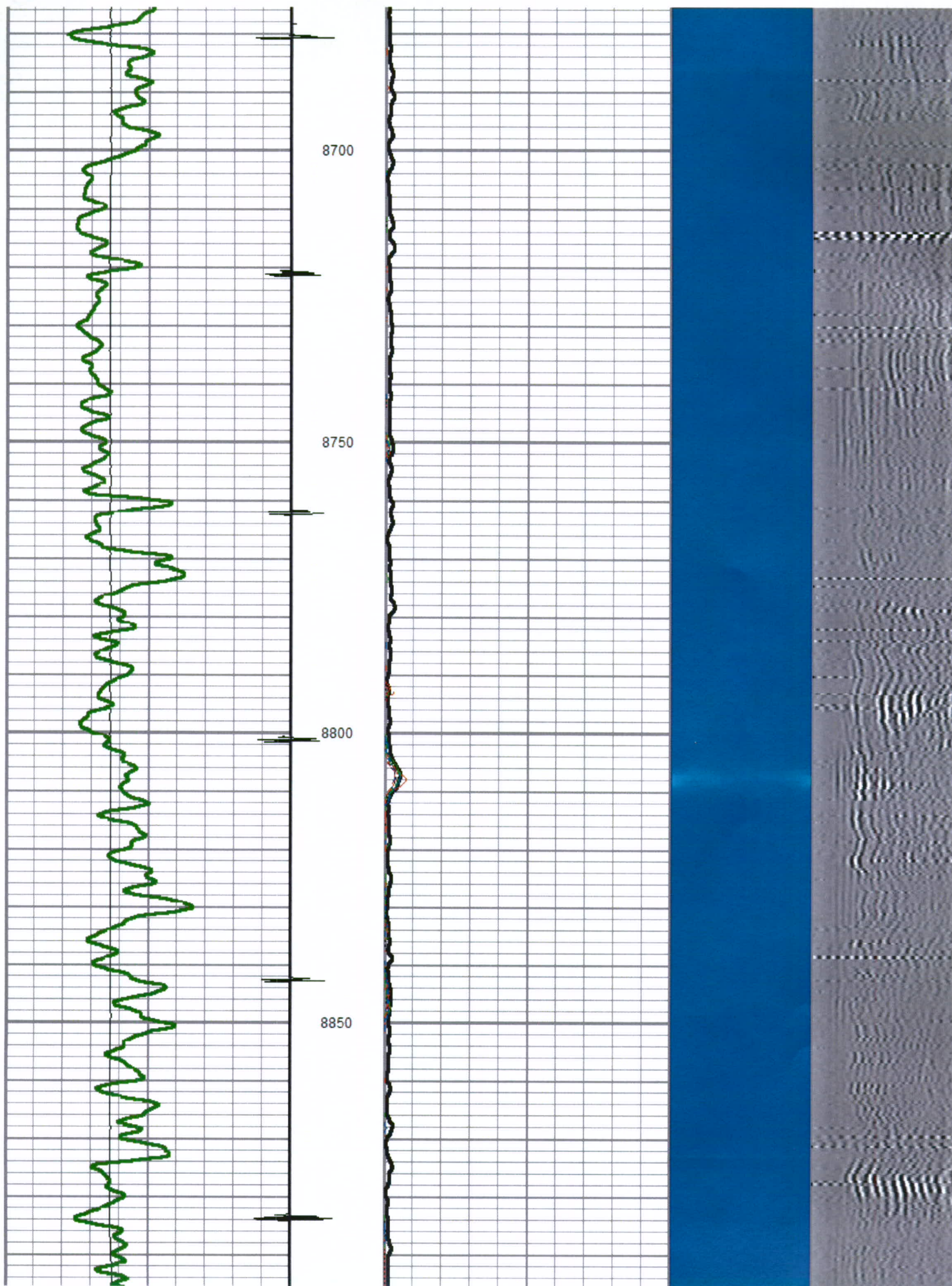
Database File: 596-31a-21.db
 Dataset Pathname: pass11
 Presentation Format: rbt_fin
 Dataset Creation: Thu Jul 16 15:06:58 2009 by Log Std Casedhole 08121
 Charted by: Depth in Feet scaled 1:240

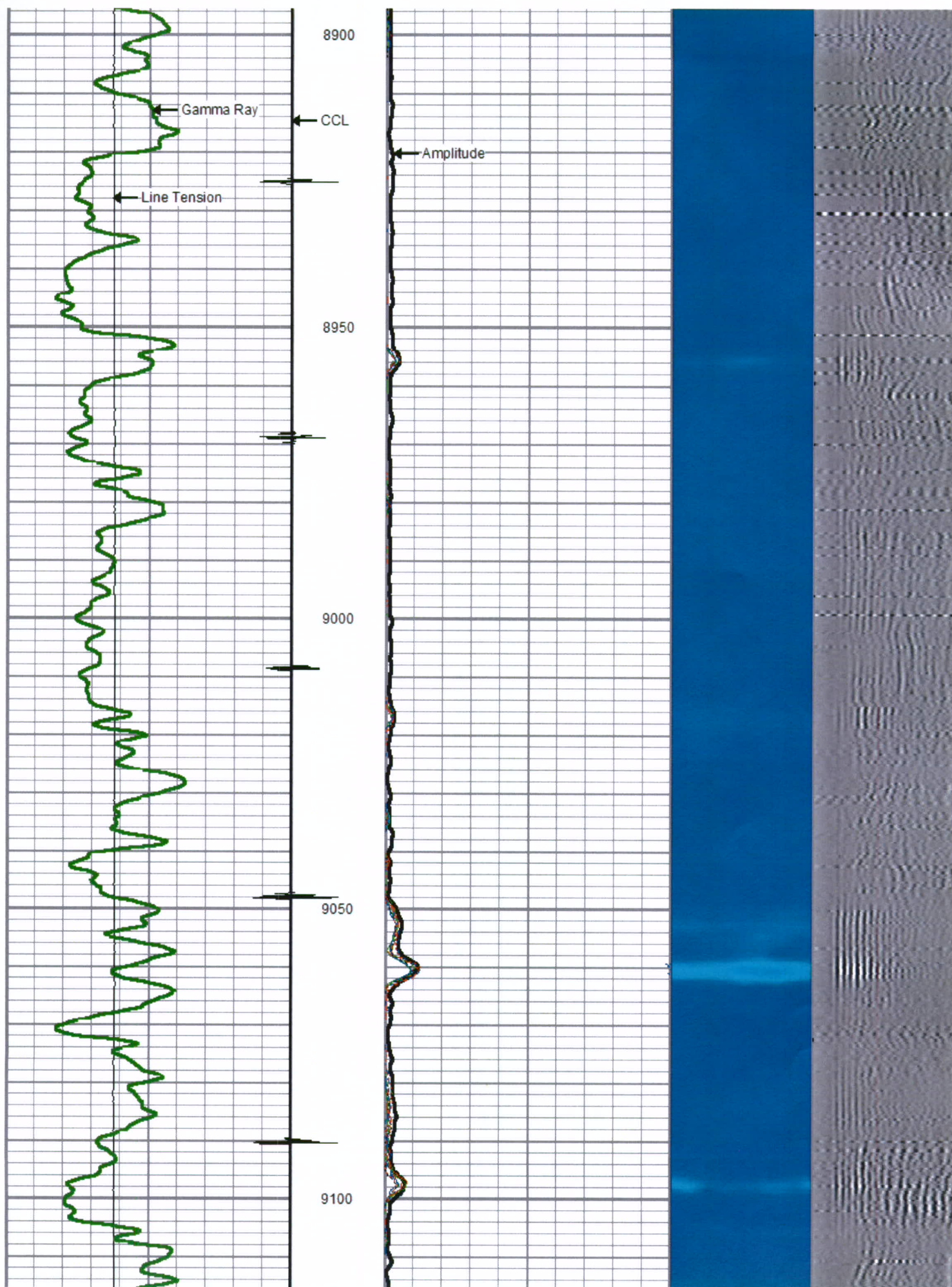


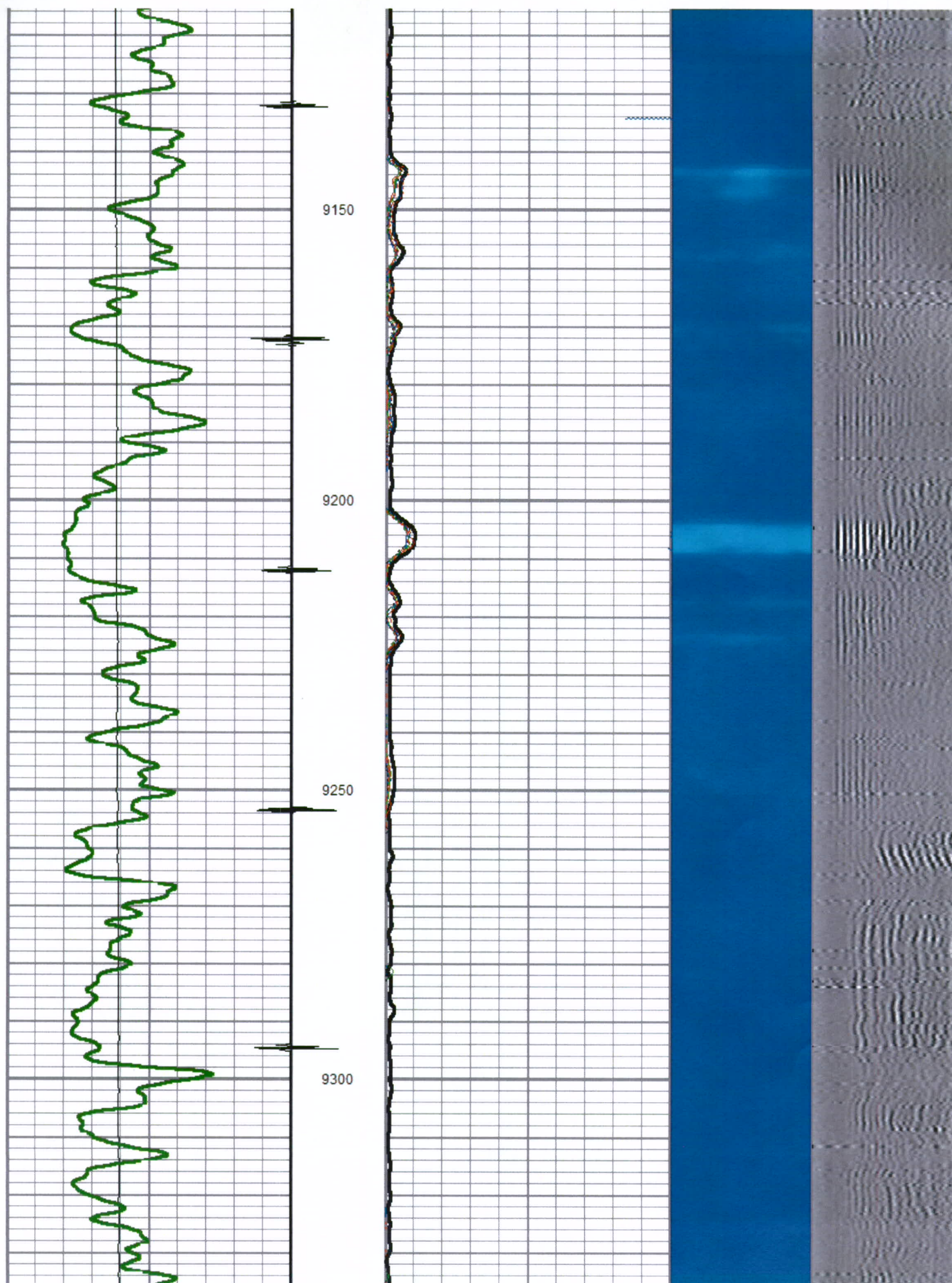


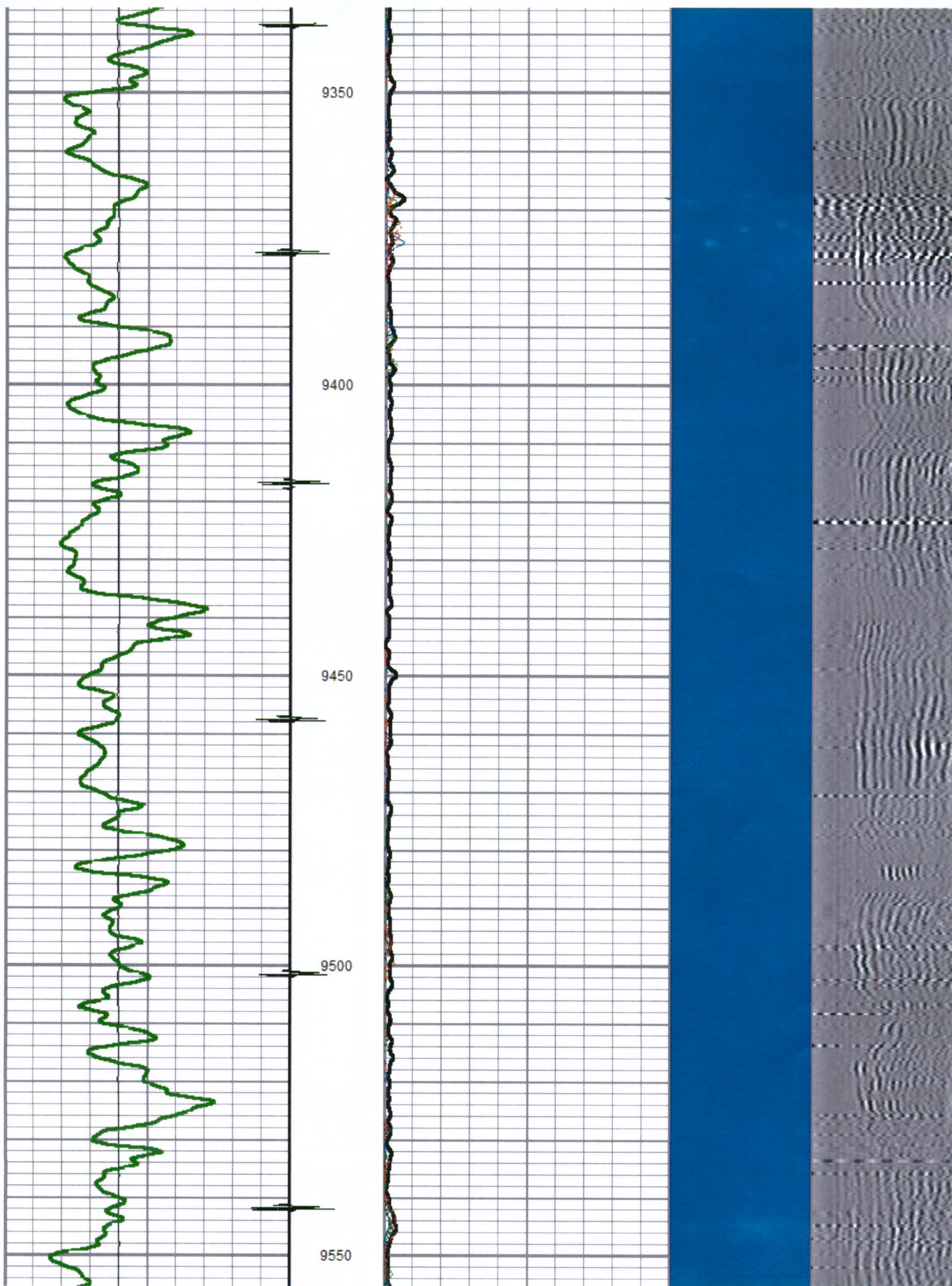


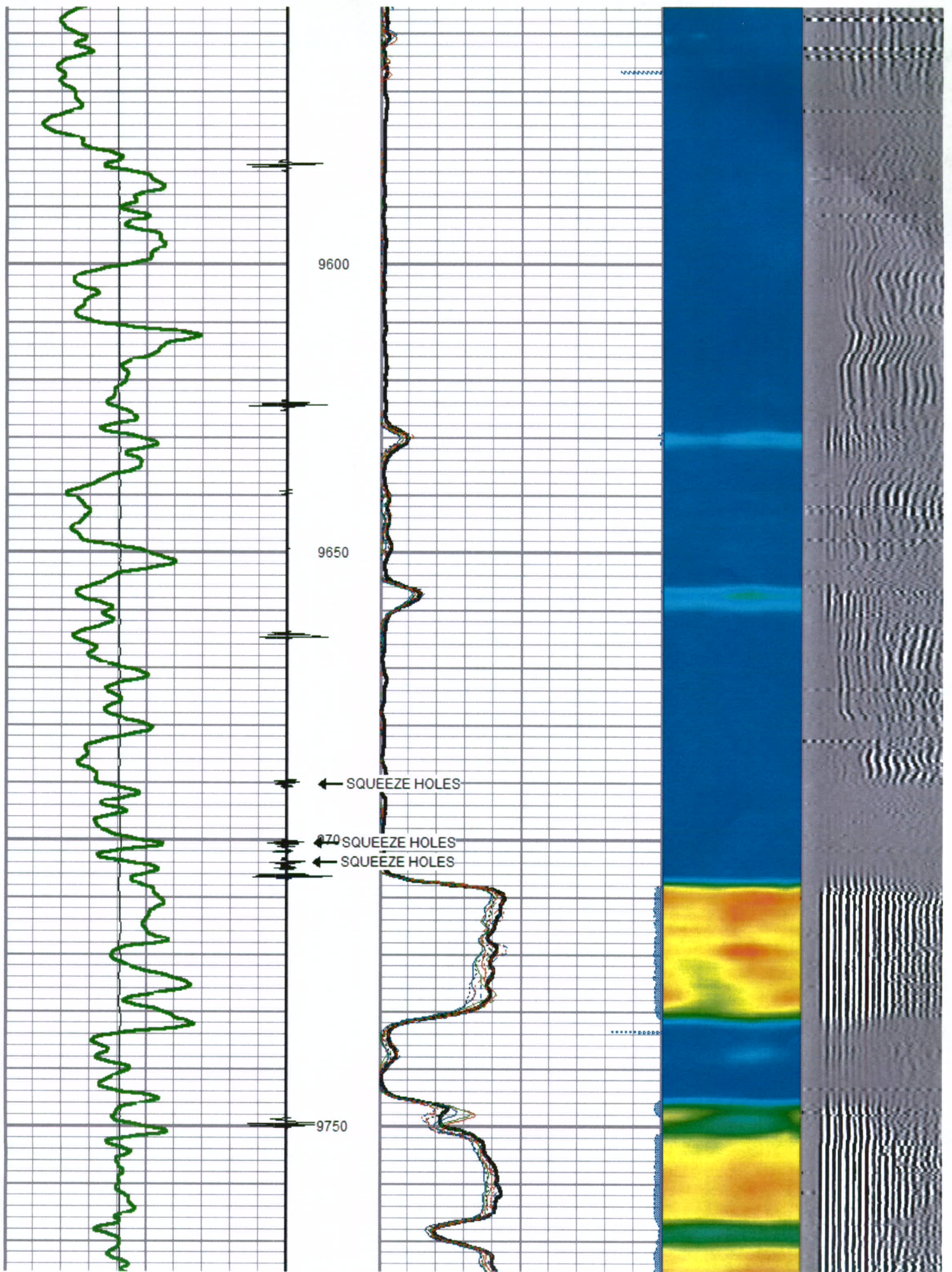


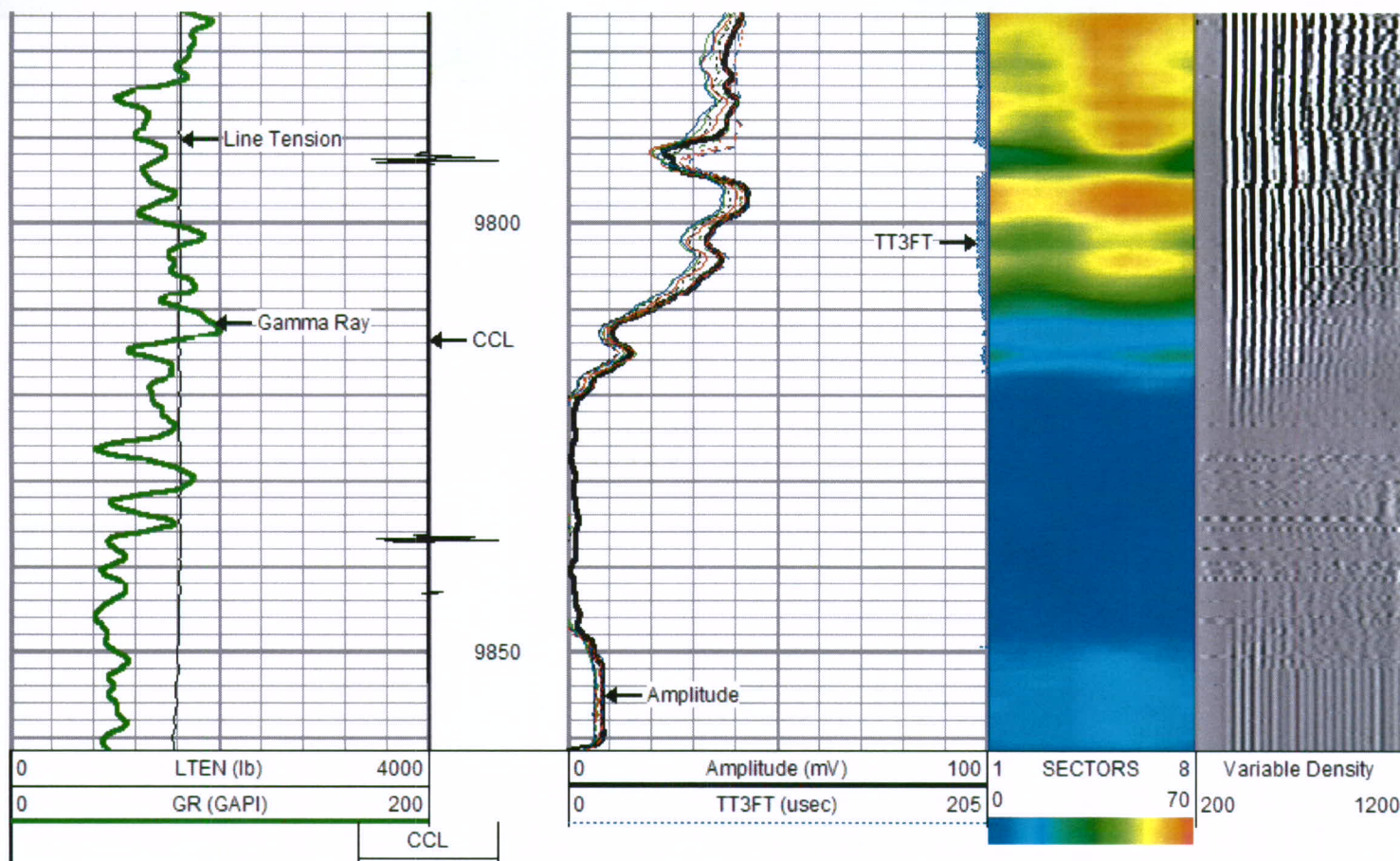













Sensor	Offset (ft)	Schematic	Description	Len (ft)	OD (in)	Wt (lb)
CCL	18.54		titan	1.00	1.69	2.00
			SNDX_CCL-SNDX_3_13_CCL (000001) CSS Gamma Ray/CCL (CCL Section)	1.92	3.13	11.02
			SONDEX	2.71	2.75	32.00
WVF3FT	10.78		SNDX_RBT-007 (000002) Radial Bond Tool - Analog 3 1/8	9.47	3.13	140.00
WVFS1	10.78					
WVFS2	10.78					
WVFS3	10.78					

WVFS4	10.78		SONDEX	2.71	2.75	32.00
WVFS5	10.78					
WVFS6	10.78					
WVFS7	10.78					
WVFS8	10.78					
WVF5FT	9.78					
GR	2.03		SNDX_GR-SNDX_3_13_GR (000001) Sondex Production Gamma Ray	2.94	3.13	22.05
Dataset: 596-31a-21.db: field/well/run1/pass12 Total Length: 20.75 ft Total Weight: 239.07 lb O.D.: 3.13 in						



Company MARATHON OIL COMPANY
 Well 596-31A-21
 Field GRAND VALLEY
 County GARFIELD
 State COLORADO