



order LPB



BP America, Inc
501 WestLake Park Blvd.
Houston, TX 77079-3092

Phone: 281-366-2000

March 21, 2007

Mr. Brian Macke, Director
Colorado Oil and Gas Conservation Commission
1120 Lincoln St., Suite 801
Denver, CO 80203

Dear Brian:

COGCC Order No. 112-156, Fruitland Coal Infill Well Pressure Data Requirement

Well – NEIL GAS UNIT 34-13 NO. 2

API No. 05-067-09054-00

Location – 34N 08W 13 SW-SUL, La Plata County

Date of First Delivery – 10/24/05

Initial Pressure Information

Pressure – 900 PSIA @ 2,426' KB

Date Measured – 10/24/05

Shut-in Time – 35 Days

Method – Dip-in at depth indicated

Two – Three Month Pressure Information

Pressure – 580 PSIA @ 0' KB

Date Measured – 2/23/06

Shut-in Time – 7.3 Days

Cumulative Recovery @ Shut-in – 32 MMCF

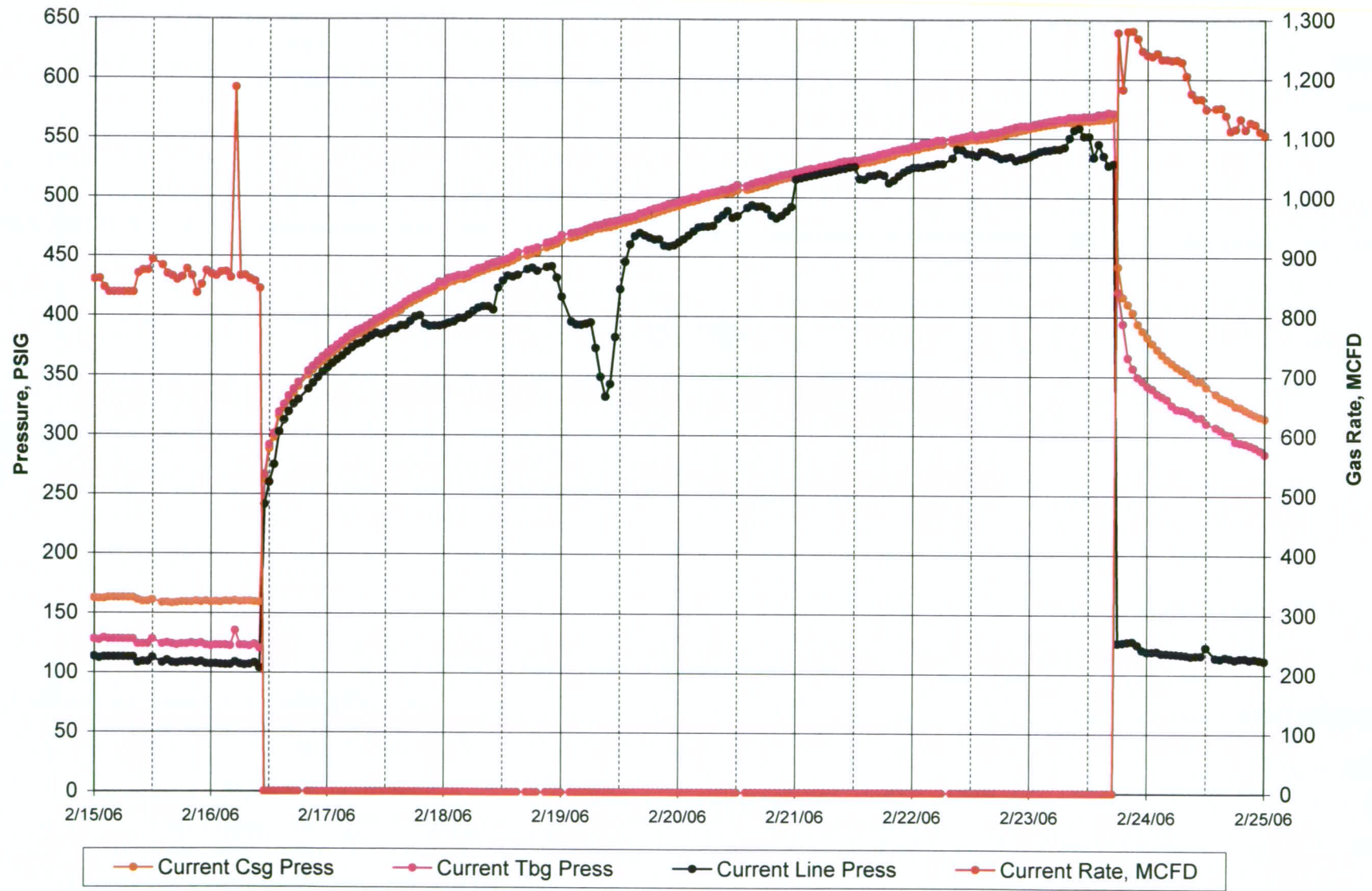
Method – Read surface casing pressure gauge, but did not obtain a fluid level;
bottomhole pressure could be considerably higher

Yours very truly,

Roger Gierhart
San Juan North Asset

cc: Well File

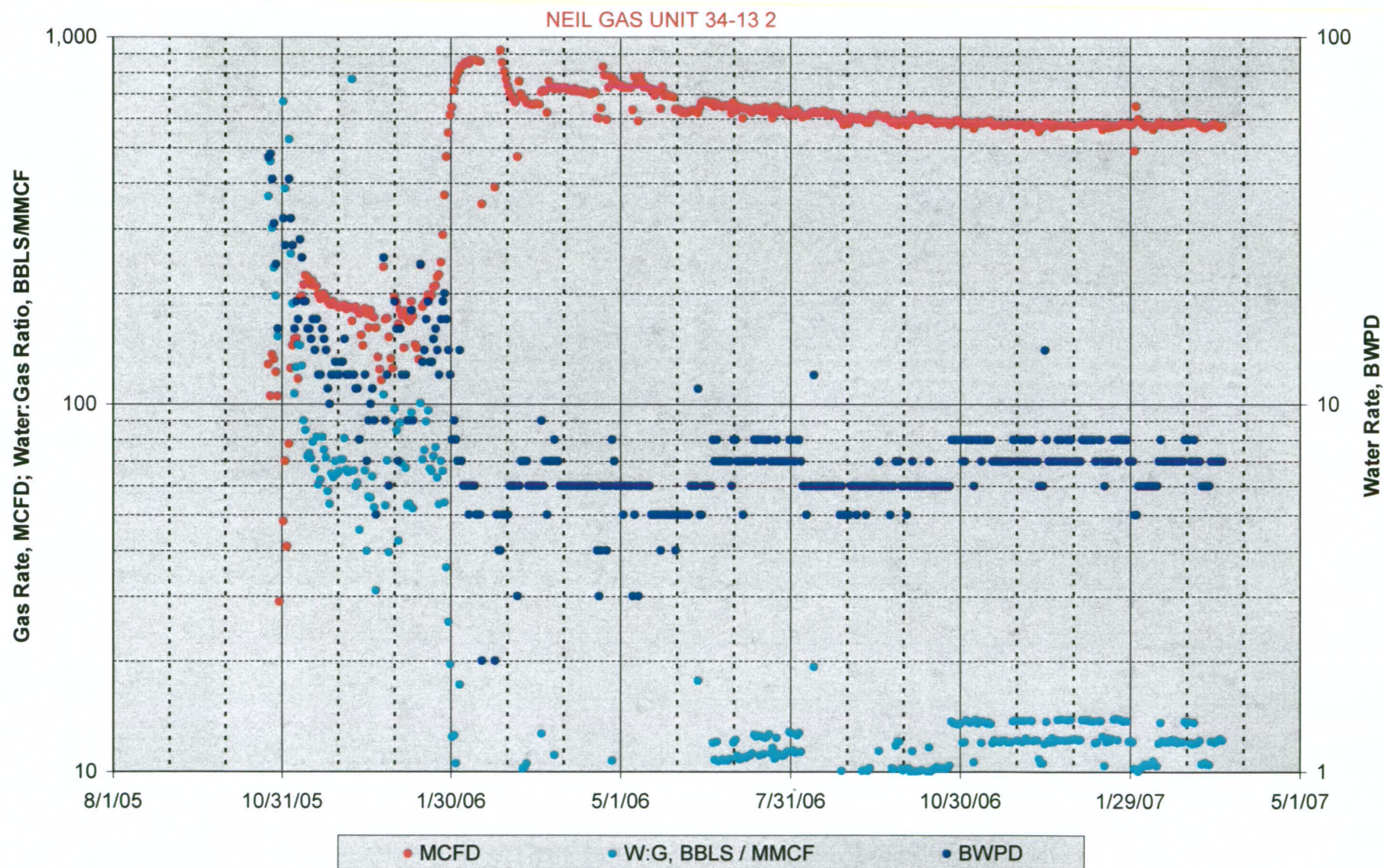
NEIL GAS UNIT 34-13 2; API - 05067090540000



NEIL GAS UNIT 34-13 2; API - 05067090540000			
Maximum			
Pressure			
PSIG	SI	RTP	Days SI
568	2/16/06 11:00 AM	2/23/06 6:00 PM	7.3
Cumulative Recovery at SI, MMCF =			32

Cum Gas @ 3/20/07, MMCF = 278

Well Performance



Well Performance

