



RECEIVED

MAR -1 07

COGCC



BP America, Inc
501 WestLake Park Blvd.
Houston, TX 77079-3092

Phone: 281-366-2000

February 23, 2007

Mr. Brian Macke, Director
Colorado Oil and Gas Conservation Commission
1120 Lincoln St., Suite 801
Denver, CO 80203

Dear Morris:

COGCC Order No. 112-156, Fruitland Coal Infill Well Pressure Data Requirement

Well – McMANUS GAS UNIT 33-22 No. 2

API No. 05-067-08945-00

Location – 34N 08W 22 SW-SUL, La Plata County

Date of First Delivery – 7/22/04

Initial Pressure Information

Pressure – 1,324 PSIA @ 2,746' KB (likely not good communication with reservoir)

Date Measured – 6/30/04

Shut-in Time – 5 Days

Method – Dip-in at depth indicated

Two – Three Month Pressure Information

No test obtained

Three Year Pressure Information

Maximum Pressure – 610 PSIG @ 0' KB (Corrected to 948 PSIA @ 2,745' KB)

Date Measured – 2/22/07

Shut-in Time – 8.0 Days

Cumulative Recovery @ Shut-in – 785 MMCF

Method – Surface pressure plus fluid level



RECEIVED

MAR - 1 07

COGCC



Please call me at (281) 366-5836 if you have any questions or comments regarding this information.

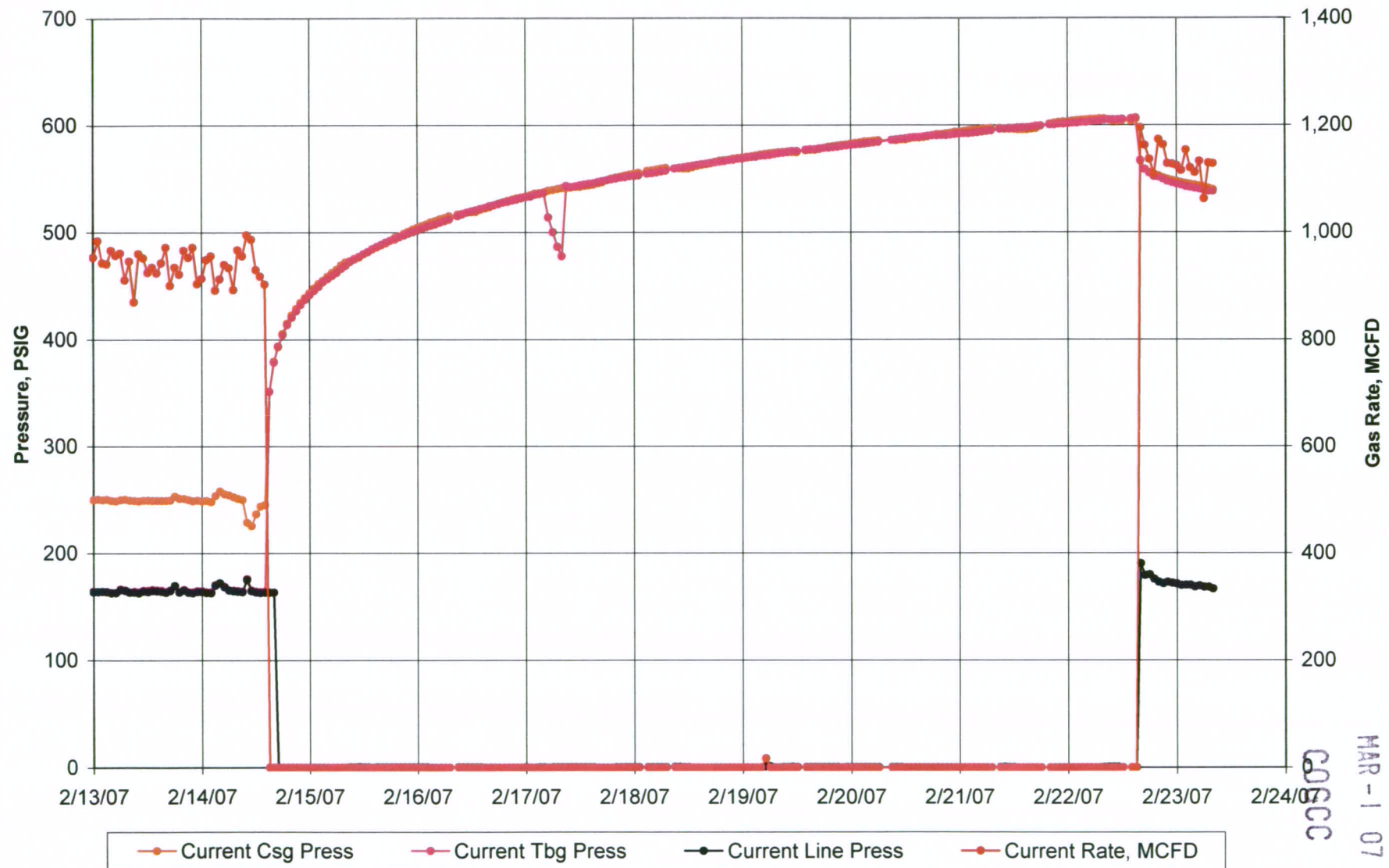
Yours very truly,

A handwritten signature in blue ink, appearing to read 'Roger Gierhart'.

Roger Gierhart
San Juan North Asset

cc: Well File

MCMANUS GAS UNIT 33-22 2; API - 05067089450000



RECEIVED
MAR - 1 07
COGCC

RECEIVED

MAR -1 07

COGCC

MCMANUS GAS UNIT 33-22 2; API - 05067089450000

Maximum			
Pressure			
PSIG	SI	RTP	Days SI
606	2/14/07 2:00 PM	2/22/07 3:00 PM	8.0
	Cumulative Recovery at SI, MMCF =		785

Data

MCMANUS GAS UNIT 33-22 2; API - 05067089450000.xls

2/23/2007

9:43 AM

Subsequent Infill Well Pressure with Sonic Fluid Level

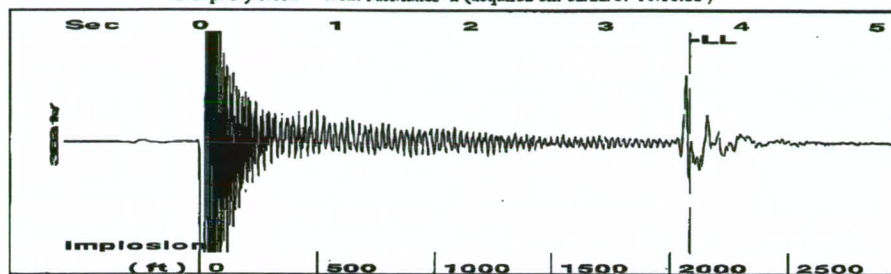
RECEIVED

MAR - 1 07

COGCC

Data	Input		
Well	MCMANUS GAS UNIT 33-22 2		
API Number	05067089450000		
Date and time of Sonolog shot	02/22/2007 04:10:06 PM		
SI Casing Pressure, PSIG	610		
Gas / Liquid Interface Pressure, PSIG	649		
Liquid Level, ft	2,082 (Driller's Depth)		
Pump Intake Depth, ft	2,745 (Driller's Depth)		
Equivalent Gas Free Liquid HT, TVD	664		
Calculations			
Bottomhole Pressure, PSIG	937		
Bottomhole Pressure, PSIA	948		
Reference Depth, Ft	2,745 (Driller's Depth)		

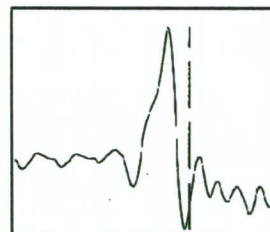
Group: dry creek Well: McManus -2 (acquired on: 02/22/07 16:10:06)



Time 3.62 sec
Joints 65.6625 Jts
Depth 2081.50 ft

Liquid level calculated with
user supplied Acoustic Velocity

Acoustic Velocity 1150 ft/s



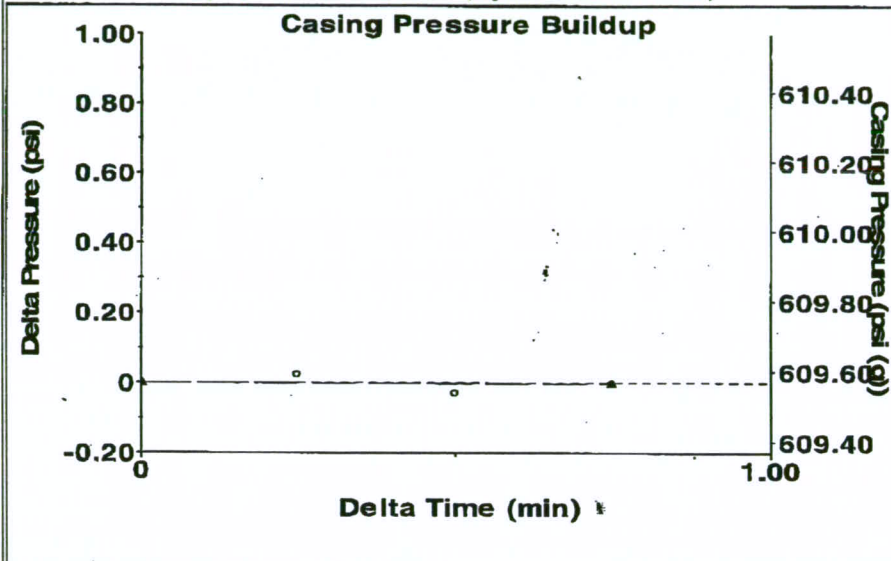
Analysis Method: Acoustic Velocity

Group: dry creek Well: McManus -2 (acquired on: 02/22/07 16:10:06)

Production	Potential	Casing Pressure	Producing
Current		609.6 psi (g)	
Oil -*- BBL/D		Casing Pressure Buildup	Annular
Water -*- BBL/D		-0.0 psi	Gas Flow
Gas -*- Mscf/D		0.75 min	0 Mscf/D
IPR Method	Vogel	Gas/Liquid Interface Pressure	%% Liquid
PBHP/SBHP	-*-	649.4 psi (g)	100 %
Production Efficiency	0.0		
Oil 40 deg.API		Liquid Level	
Water 1.05 Sp.Gr.H2O		2081.50 ft	
Gas 0.77 Sp.Gr.AIR		Formation Depth	
Acoustic Velocity	1150 ft/s	2745.00 ft	
Pump Intake Depth	-*- ft	Pump Intake Pressure	-*- psi (g)
Total Gaseous Liquid Column HT (TVD)	0 ft	Producing BHP	856.7 psi (g)
Equivalent Gas Free Liquid HT (TVD)	0 ft	Static BHP	-*- psi (g)



Group: dry creek Well: McManus -2 (acquired on: 02/22/07 16:10:06)



Change in Pressure -0.00 psi PT 7134
Change in Time 0.75 min Range 0 - 7 psi

Group: dry creek Well: McManus -2 (acquired on: 02/22/07 16:10:06)

No Collar Count Data Available

RECEIVED
MAR - 1 07
COGCC