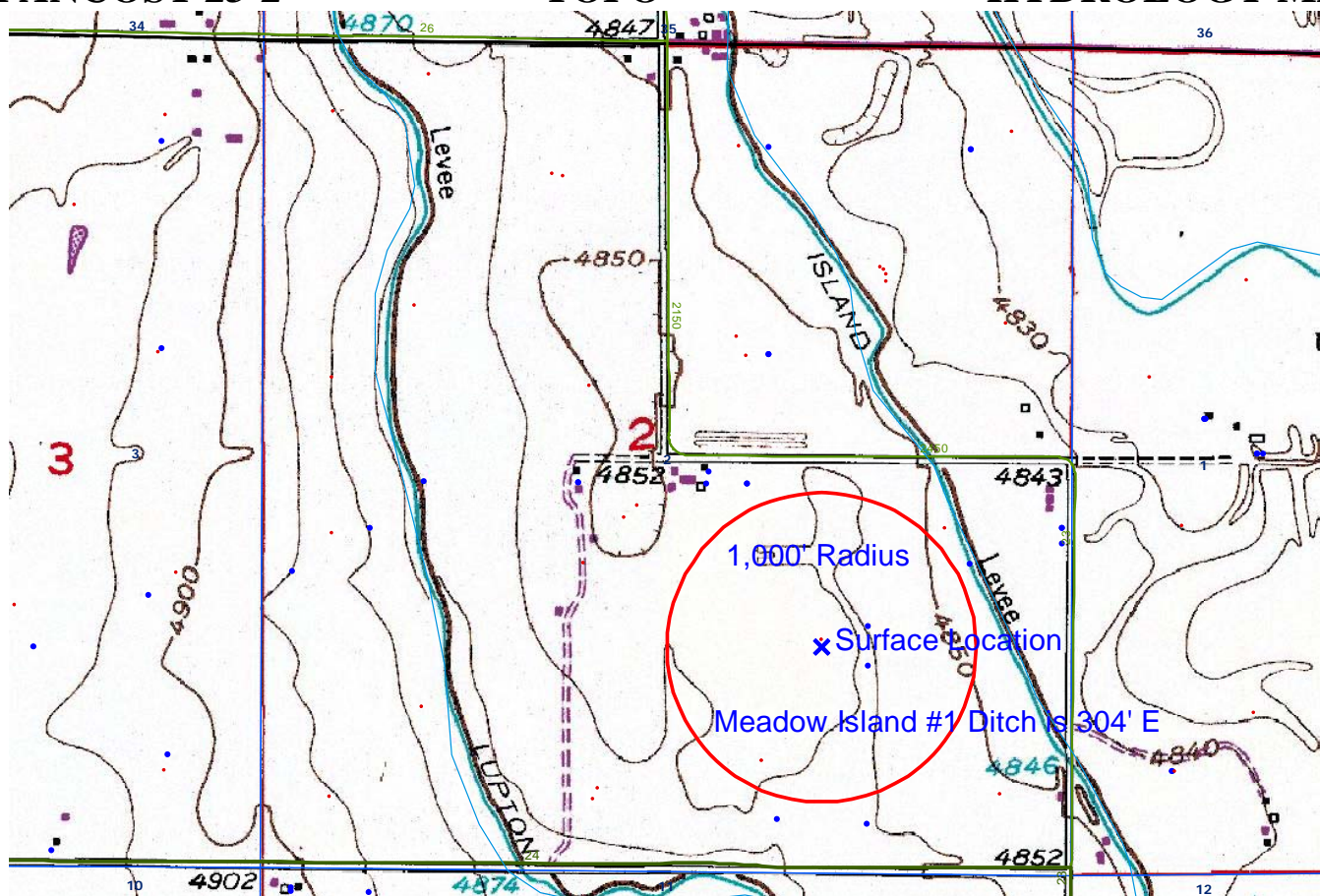


PANCOST 23-2

TOPO

HYDROLOGY MAP-A



TOWNSHIP 2 NORTH, RANGE 67 WEST

LEGEND A

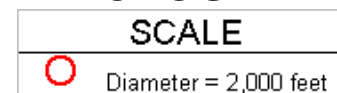
WATER RESOURCES








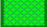

- Water Wells
- Lakes
- Major Rivers
- Streams
- 300-Foot Stream Buffers

LEGEND B

1200-SEARIES WILDLIFE AREAS

- RSO Areas
- RSO_Osprey_Curren
- SWH Areas
- State Wildlife Areas

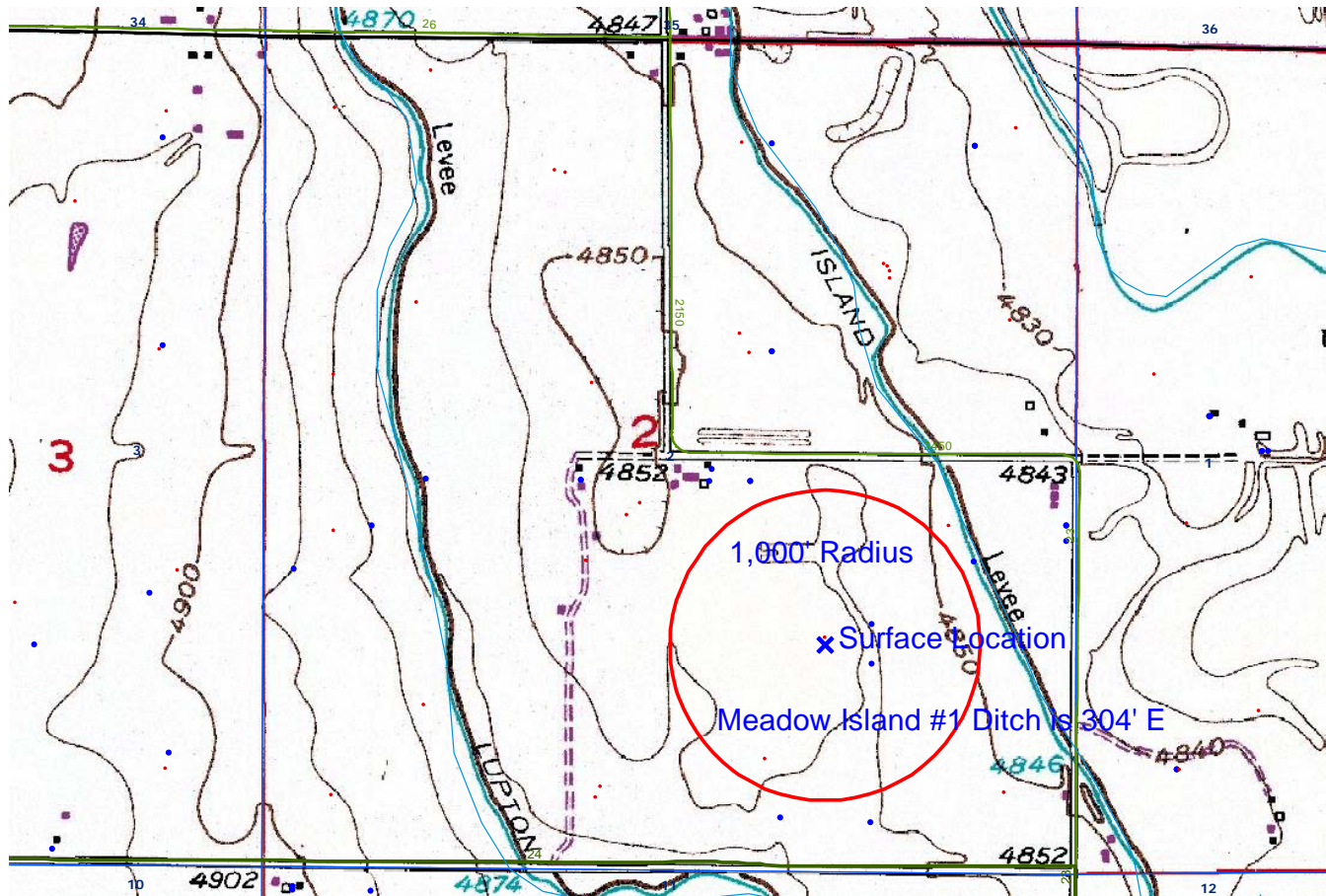


| LEGEND A | LEGEND B |
|---|--|
| <p>WATER RESOURCES</p> <ul style="list-style-type: none">  Water Wells  Lakes  Major Rivers  Streams  300-Foot Stream Buffers | <p>1200-SEARIES WILDLIFE AREAS</p> <ul style="list-style-type: none">  RSO Areas  RSO_Osprey_Curren  SWH Areas  State Wildlife Areas |

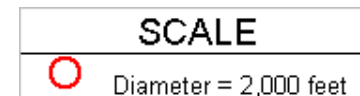
PANCOST 23-2

TOPO

HYDROLOGY MAP-B



TOWNSHIP 2 NORTH, RANGE 67 WEST



LEGEND A

WATER RESOURCES

- Water Wells
- Lakes
- Major Rivers
- Streams
- 300-Foot Stream Buffers

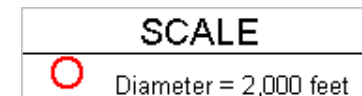
LEGEND B

1200-SEARIES WILDLIFE AREAS

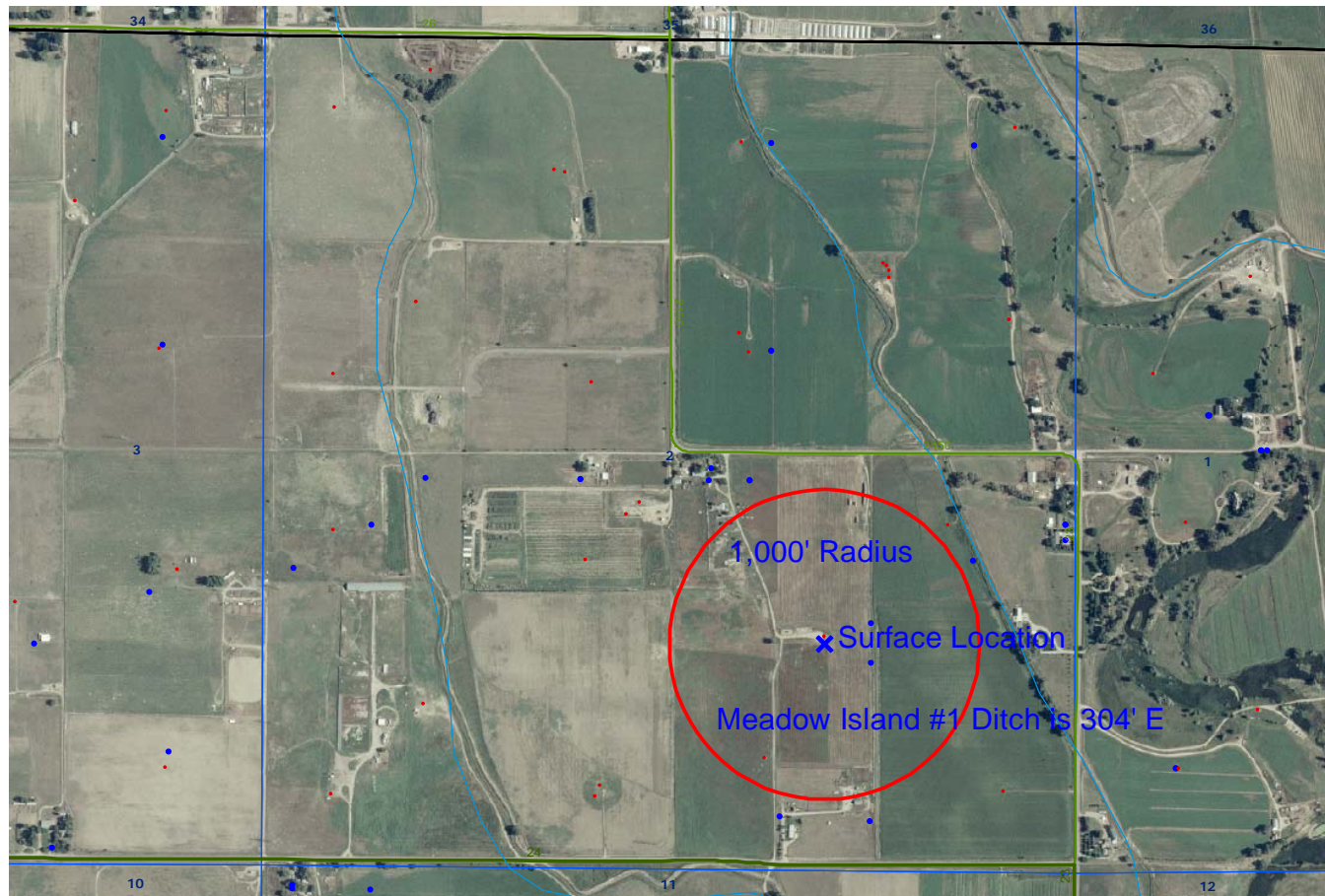
- RSO Areas
- RSO_Osprey_Curren
- SWH Areas
- State Wildlife Areas



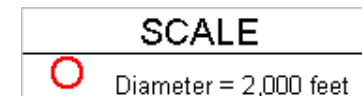
TOWNSHIP 2 NORTH, RANGE 67 WEST



| LEGEND A | LEGEND B |
|-------------------------|-----------------------------|
| WATER RESOURCES | 1200-SEARIES WILDLIFE AREAS |
| Water Wells | RSO Areas |
| Lakes | RSO_Osprey_Curren |
| Major Rivers | SWH Areas |
| Streams | State Wildlife Areas |
| 300-Foot Stream Buffers | |



TOWNSHIP 2 NORTH, RANGE 67 WEST



| LEGEND A |
|-------------------------|
| WATER RESOURCES |
| Water Wells |
| Lakes |
| Major Rivers |
| Streams |
| 300-Foot Stream Buffers |

| LEGEND B |
|-----------------------------|
| 1200-SEARIES WILDLIFE AREAS |
| RSO Areas |
| RSO_Osprey_Curren |
| SWH Areas |
| State Wildlife Areas |