

**MARATHON OIL COMPANY**  
PICEANCE BASIN, COLORADO

## REFERENCE AREA 3 FOR WELL PAD 697-26A

GARFIELD COUNTY, COLORADO

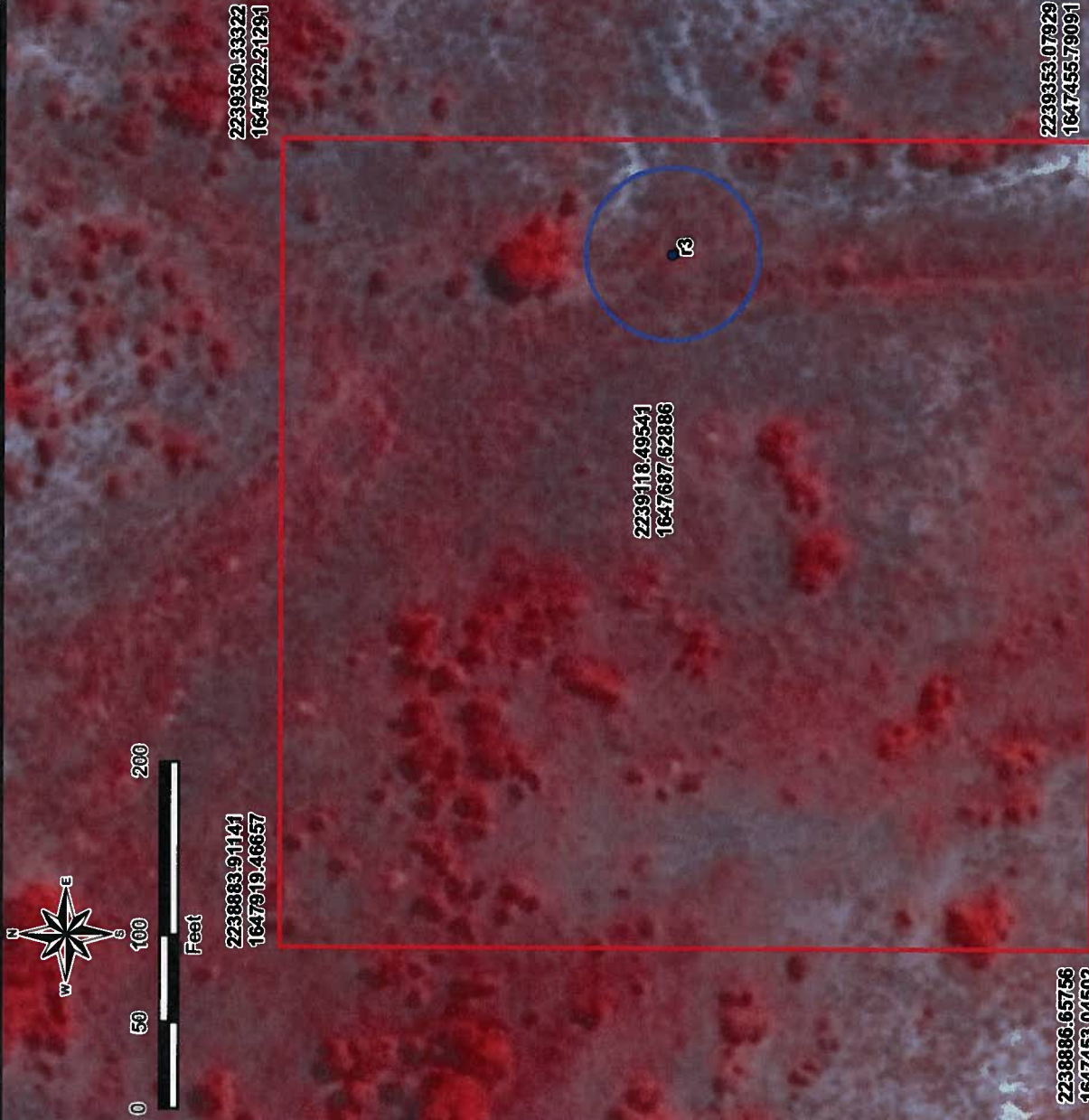
Drawn:	eeb/AV9.3
Checked:	KEN
Approved:	KEN
Date:	2/2/10
Dwg. No.:	A432E-113



**C-K**  
ASSOCIATES, LLC

BATON ROUGE, LOUISIANA

**FIGURE 3 OF 6**



ESRI  
MAPPING  
CONSULTING

Reference

AUGUST 2008 INFRARED SATELLITE IMAGE







