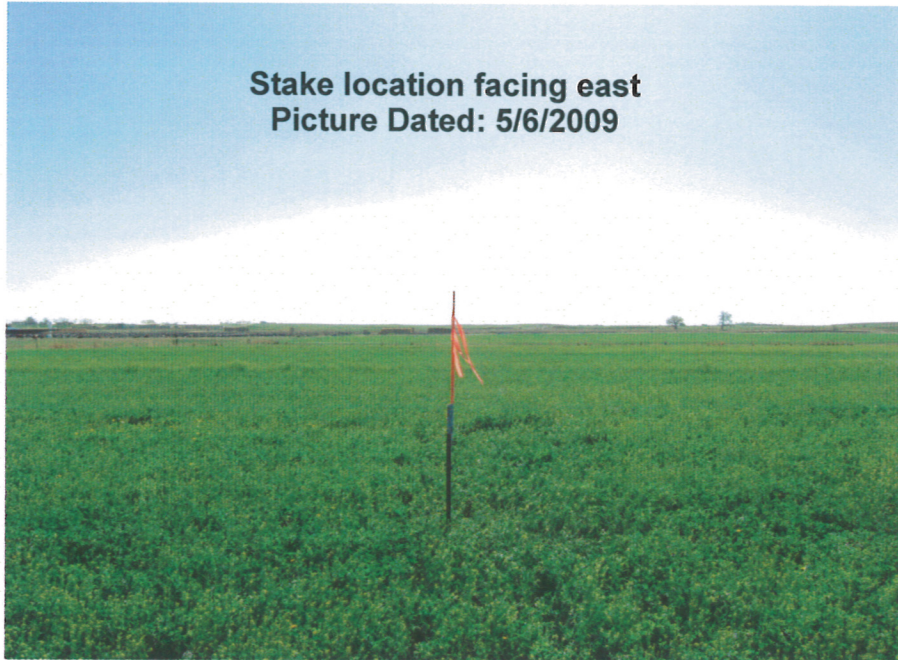


ARENS G26-18D
Township 4 North, Range 65 West
Section 26: SE/4NW/4
Weld County, Colorado



ARENS G26-18D
Township 4 North, Range 65 West
Section 26: SE/4NW/4
Weld County, Colorado

Stake location facing east
Picture Dated: 5/6/2009



Stake location facing west
Picture Dated: 5/6/2009



ARENS G26-18D
Township 4 North, Range 65 West
Section 26: SE/4NW/4
Weld County, Colorado

Access road facing north
Picture Dated: 5/6/2009

