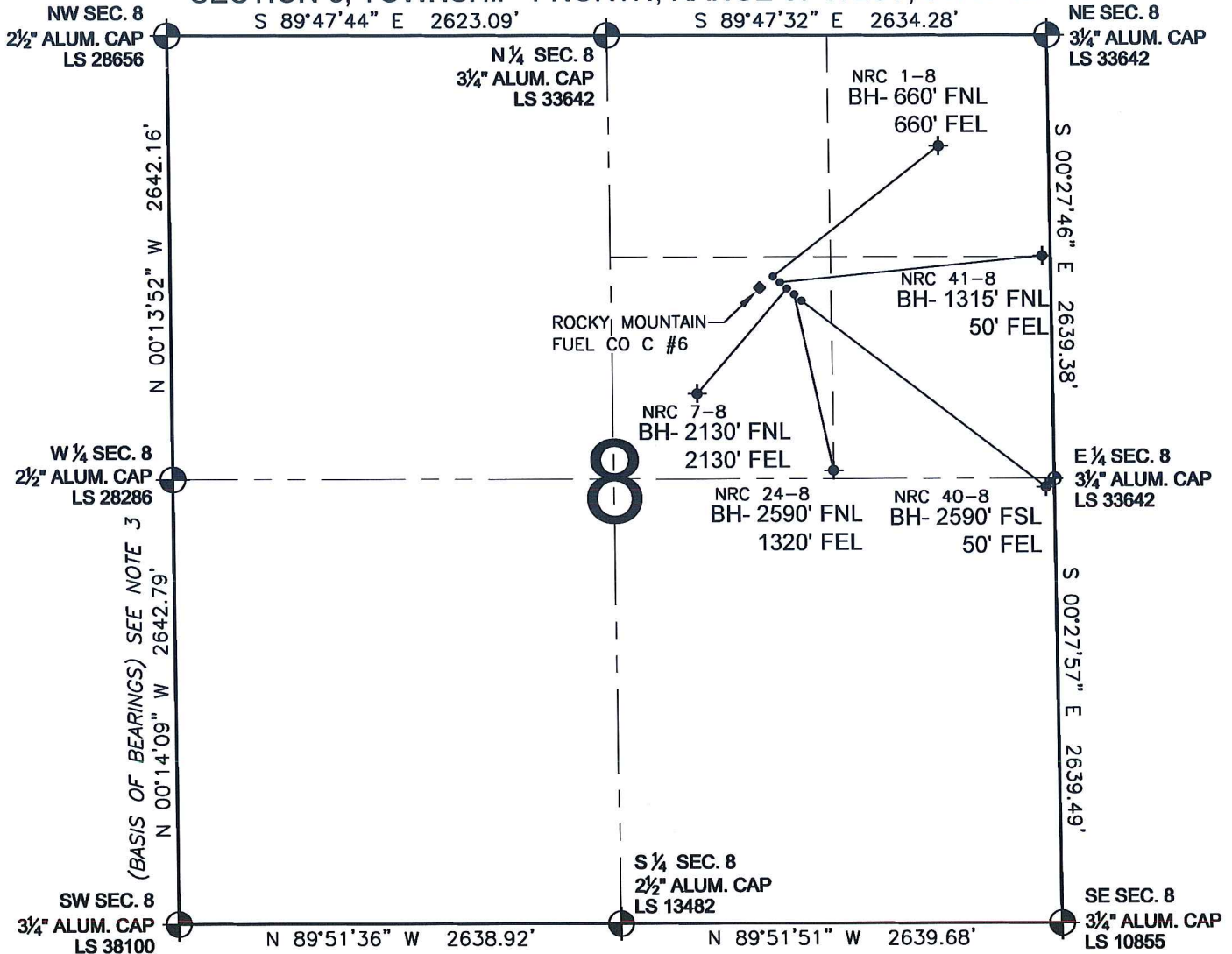


# PAD DRAWING - NRC 5 PAD

SECTION 8, TOWNSHIP 1 NORTH, RANGE 67 WEST, 6TH P.M.



## LEGEND

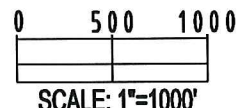
- = EXISTING MONUMENT   
 = BOTTOM HOLE   
 BH= BOTTOM HOLE  
 = PROPOSED WELL   
 = EXISTING WELL

## NOTES:

- THIS SURVEY WAS DONE BY GPS METHODS AND CONFORMS TO THE MINIMUM STANDARDS SET BY THE C.O.G.C.C., RULE NO. 215
- ELEVATIONS SHOWN AT THE WELL HEAD, AS WELL AS HORIZONTAL CONTROL, ARE BASED ON GPS-RTK VALUES DERIVED FROM DOING 2-HOUR STATIC GPS SESSIONS AND REDUCTIONS USING O.P.U.S. SOLUTIONS.  
VERTICAL = NAVD88; HORIZONTAL = NAD83/92
- THE BEARINGS SHOWN HEREON ARE BASED ON GPS OBSERVATIONS BETWEEN THE MONUMENTS SHOWN HEREON AS FOUND ON THE FIELD DATE BELOW.
- DISTANCES SHOWN ARE AT GROUND LEVEL, AS MEASURED IN THE FIELD, WITH TIES TO WELLS MEASURED AT A PERPENDICULAR TO SECTION LINES.

## NOTES:

NRC 1-8 TO BE AT 1540' FNL, 1544' FEL.  
 BOTTOM HOLE AT 660' FNL & 660' FEL.  
 NRC 41-8 TO BE AT 1550' FNL, 1532' FEL.  
 BOTTOM HOLE AT 1315' FNL & 50' FEL.  
 NRC 7-8 TO BE AT 1560' FNL, 1519' FEL.  
 BOTTOM HOLE AT 2130' FNL & 2130' FEL.  
 NRC 24-8 TO BE AT 1570' FNL, 1507' FEL.  
 BOTTOM HOLE AT 2590' FNL & 1320' FEL.  
 NRC 40-8 TO BE AT 1581' FNL, 1495' FEL.  
 BOTTOM HOLE AT 2590' FSL & 50' FEL.  
 ROCKY MOUNTAIN FUEL CO C #6 IS 1577' FNL, 1575' FEL.



## REVISIONS

INITIAL	DATE
SMF	01-07-10

PREPARED BY:

**PFS**

Petroleum Field Services, LLC  
1801 W. 13th Ave.  
Denver, CO 80204



KERR-MCGEE OIL & GAS ONSHORE LP

FIELD DATE:

12-09-09

DRAWING DATE:

12-10-09

BY:

SMF

PAD NAME:

NRC 5 PAD

SURFACE LOCATION:

WELD COUNTY, COLORADO  
SW 1/4 NE 1/4, SEC. 8, T1N, R67W