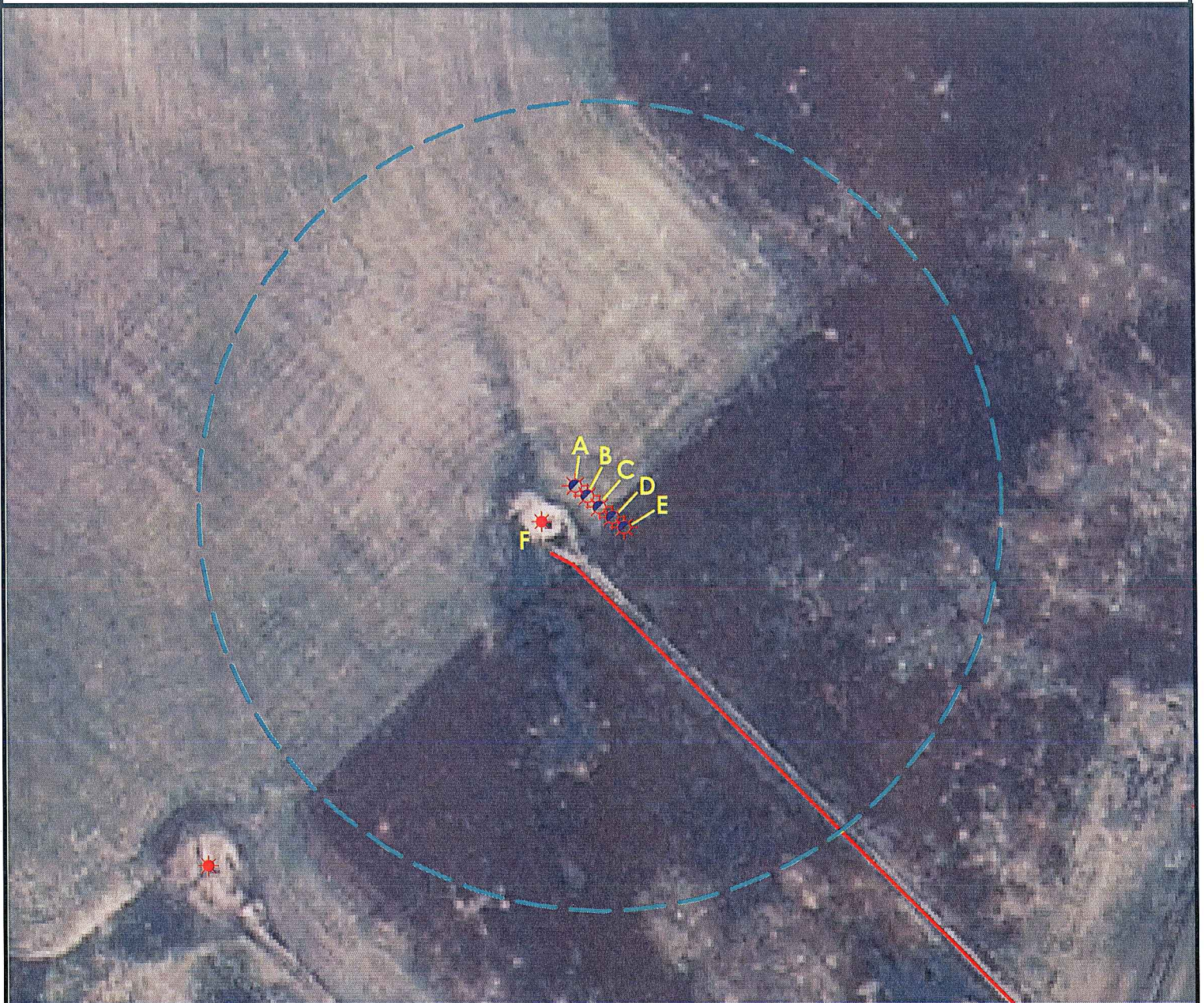
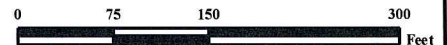


# Location Drawing



- A. Proposed Well NRC 1-8.      E. Proposed Well NRC 40-8.  
 B. Proposed Well NRC 41-8.      F. Existing Well Rocky Mountain Fuel CO C #6 is 49' SW  
 C. Proposed Well NRC 7-8.  
 D. Proposed Well NRC 24-8.



## Legend

- |                      |                     |
|----------------------|---------------------|
| Proposed Well        | Building/Residence  |
| Existing Well        | Oil & Gas Equipment |
| Plugged Well         | Water Body          |
| Water Well           | Utility Box         |
| CattleGuard          | Railroad            |
| Bridge               | Fence               |
| ECD                  | Overhead Power Line |
| 400' Radius          | Pipeline            |
| Facilities Enclosure | Access Road         |
|                      | Ditch/Canal         |
|                      | Concrete Ditch      |

## 400ft Radius Map

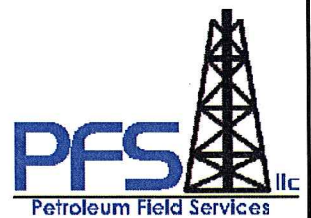
### NRC 1-8 Pad Multi Well Pad

Surface Location: T1N R67W S08  
 Description of surface uses : Open Field

Field Date: 12/09/2009  
 Drawing Date: 12/10/2009  
 Drafter: KLM  
 Checked By: MPS

Aerial Photo supplied by NAIP - 2009

Prepared for:  
**KERR-MCGEE OIL &  
 GAS ONSHORE LP**



Use our resources to find yours!  
[www.petro-fs.com](http://www.petro-fs.com)

1801 W. 13th Ave      111 E. Third Street  
 Denver, CO 80204      Suite 207  
 (303) 928-7128      Rifle, CO 81650  
                                  (970) 625-4740