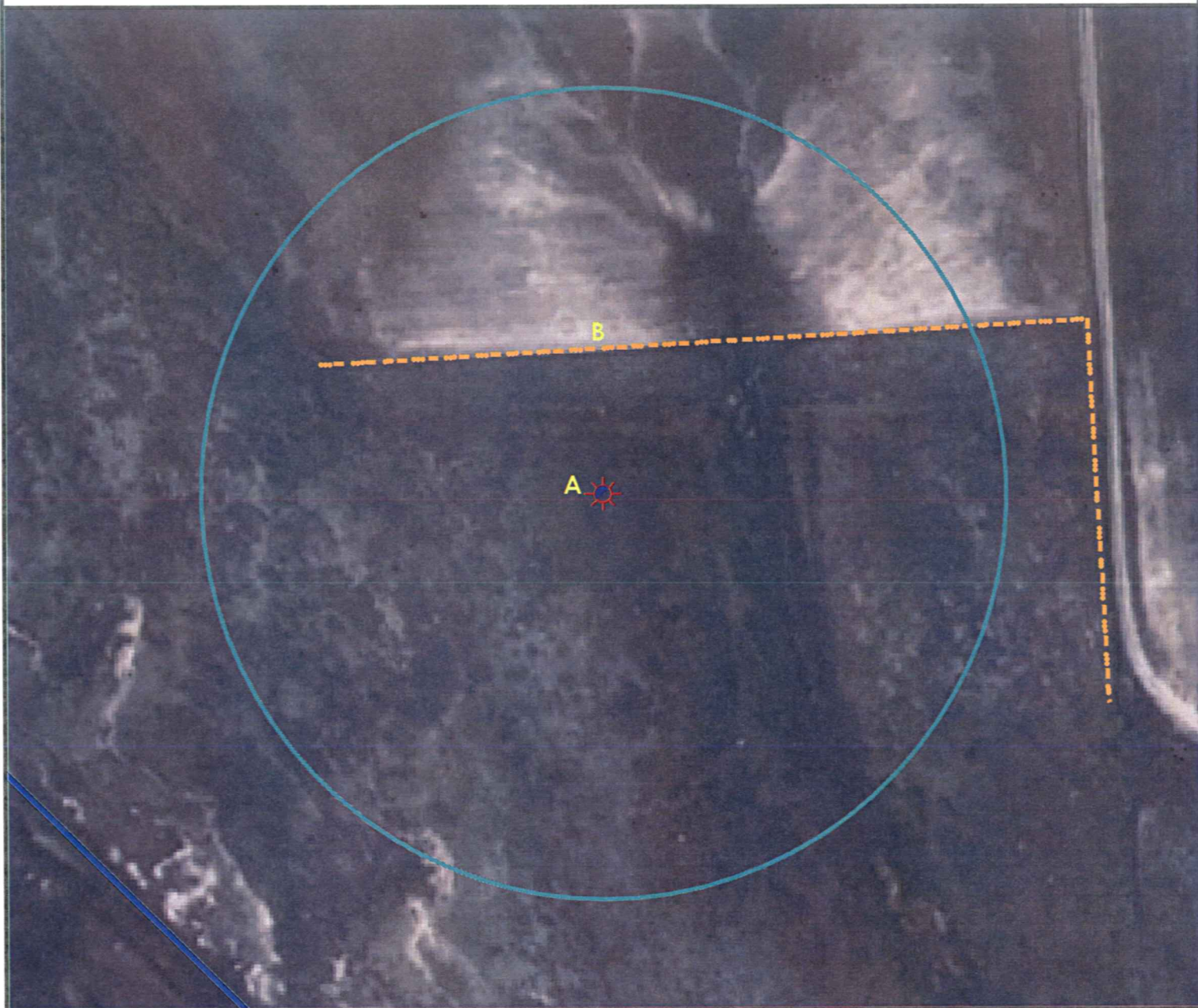
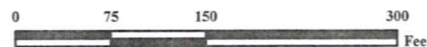


Location Drawing



A. Proposed Well COX 34-06.

B. Fence is 145' N.



Legend

- | | | | |
|--|----------------------|--|-----------------------|
| | Proposed Well | | Building/Residence |
| | Existing Well | | Oil & Gas Equipment |
| | Water Well | | Water Body |
| | Pedestal | | Utility Box |
| | CattleGuard/Gate | | Railroad |
| | Bridge | | Fence |
| | ECD | | Overhead Power Line |
| | 400' Radius | | Pipeline |
| | Facilities Enclosure | | Access Road |
| | | | Ditch/Canal |
| | | | Concrete Walled Ditch |

400ft Radius Map

COX 34-06

Surface Location: T1S R44W S34
Description of surface uses : Rangeland

Field Date: 02/09/2010
Drawing Date: 2/12/2010
Drafter: CGR
Checked By: BHF

Aerial Photo supplied by NAIP (2009)

Prepared for:
Roseetta Resources
Operating LP
717 Texas Avenue, Ste. 2800
Houston, TX 77002



Use our resources to find yours!
www.petro-fs.com

1801 W. 13th Ave Suite 207
Denver, CO 80204
(303) 928-7128
111 E. Third Street
Rifle, CO 81650
(970) 625-4740