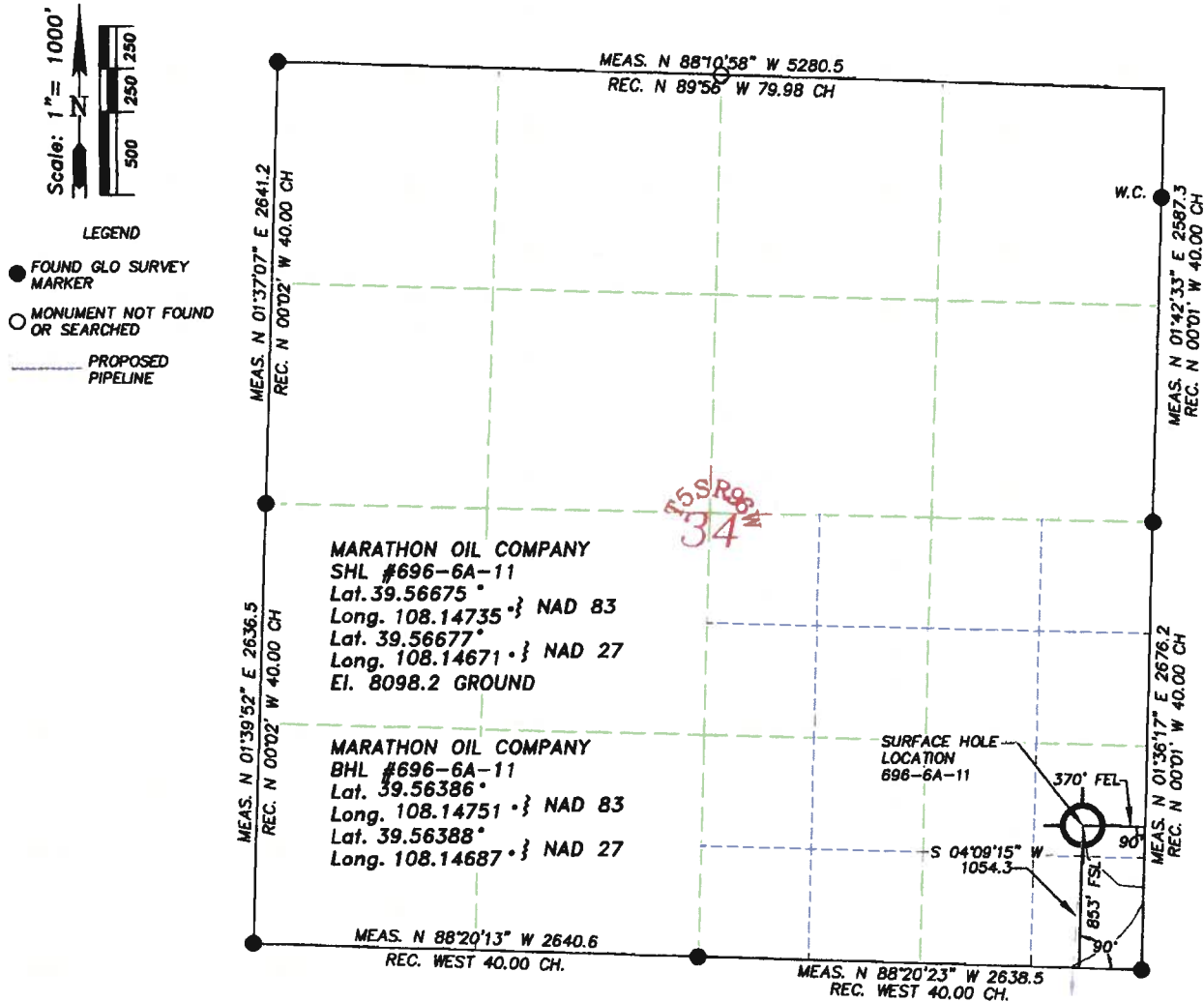


WILLIAM H. SMITH & ASSOCIATES P.C.  
SURVEYING CONSULTANTS  
T 5 S R 96 W

P.O. BOX 820  
GREEN RIVER, WYOMING 82935

550 EAST 2ND NORTH  
PH. 307-875-3638  
FAX. 307-875-3640

PLAT FOR SURFACE HOLE LOCATION



I, William H. Dolinar of Green River, Wyoming hereby certify that in accordance with a request from Frank Krugh for Marathon Oil Company, 5555 San Felipe, Houston, TX 77056. I and or personnel under my direction made a survey on the 21st day of June 2007, for the Surface Hole Location and Elevation of Marathon Oil Company, Well #696-6A-11 being located within the NE/4SE/4SE/4 of Section 34, T 5 S, R 96 W, and the Bottom Hole Location being located within Lot 2 of Section 6, T 6 S, R 96 W, of the 6th Principal Meridian, Garfield County, State of Colorado, as shown on the above Section Map. Surface Hole Elevation of ungraded ground = 8098.2 feet.

Note: Basis of bearings are grid bearings based from GPS observations. Horizontal Datum based on Colorado State Plane Coordinate System Central Zone NAD 83. Vertical Datum based on NAVD 88 NGS Triangulation Station SHALE.

NOTE: Record bearings as shown are based on the General Land Office survey, as approved on April 10, 1919 for T 5 S, R 96 W, and July 20, 1914 for T 6 S, R 96 W.

JOB NO. 26099  
04/07/2009 CED  
PAD 596-34D/PAD596-34D PLATS.dwg

LEICA GPS GDOP OF 2.1 ON 06/21/2007  
IMPROVEMENTS: NONE  
SURFACE USE: SCRUB OAK  
AND NATURAL GROUND

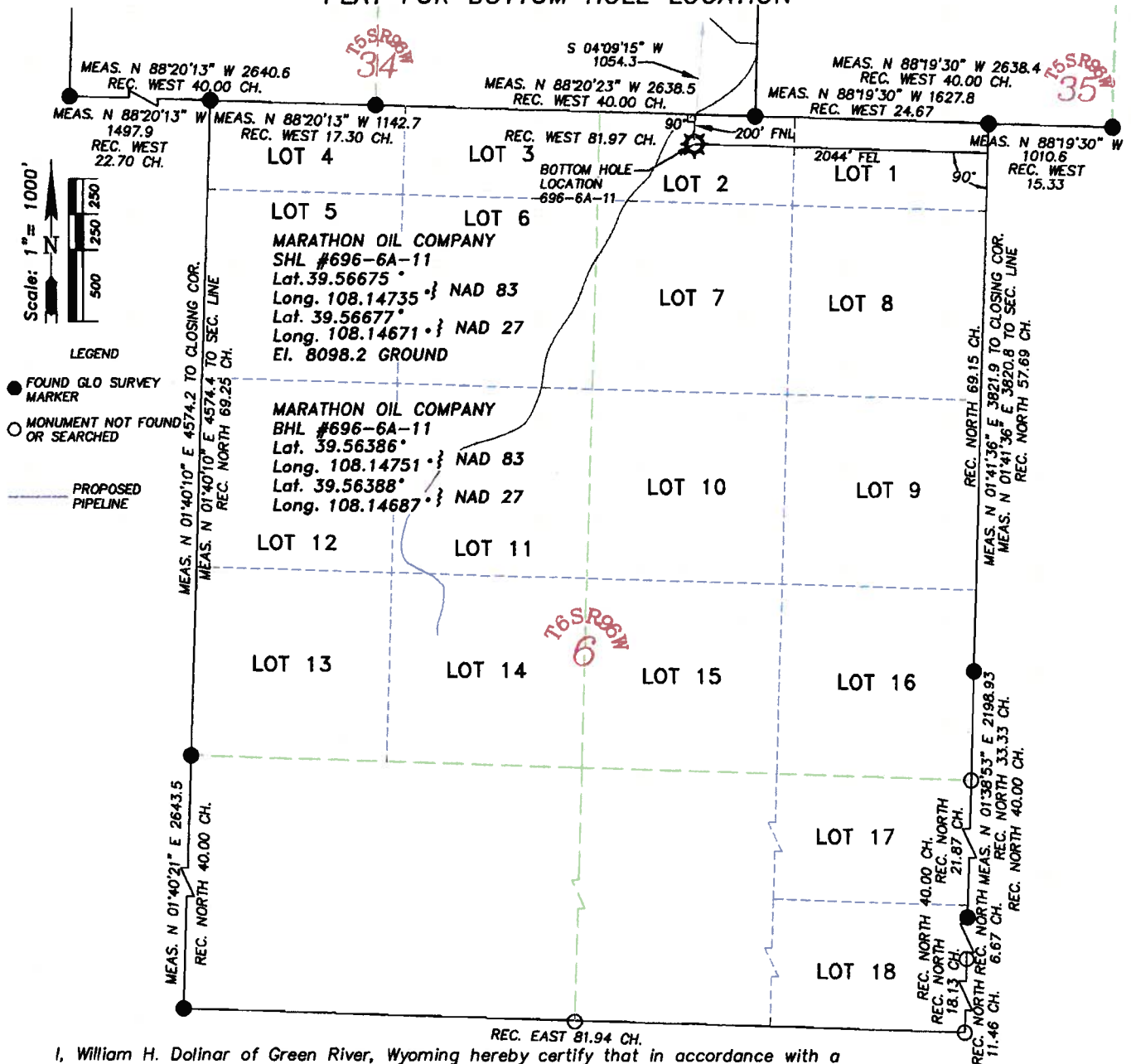
696-6A-11  
SHEET 1 of 2



P.O. BOX 820  
GREEN RIVER, WYOMING 82935

WILLIAM H. SMITH & ASSOCIATES P.C.  
SURVEYING CONSULTANTS  
T 6 S R 96 W  
PLAT FOR BOTTOM HOLE LOCATION

550 EAST 2ND NORTH  
PH. 307-875-3638  
FAX. 307-875-3640



I, William H. Dolinar of Green River, Wyoming hereby certify that in accordance with a request from Frank Krugh for Marathon Oil Company, 5555 San Felipe, Houston, TX 77056. I and or personnel under my direction made a survey on the 21st day of June 2007, for the Surface Hole Location and Elevation of Marathon Oil Company, Well #696-6A-11 being located within the NE/4SE/4SE/4 of Section 34, T 5 S, R 96 W, and the Bottom Hole Location being located within Lot 2 of Section 6, T 6 S, R 96 W, of the 6th Principal Meridian, Garfield County, State of Colorado, as shown on the above Section Map. Surface Hole Elevation of ungraded ground = 8098.2 feet.

Note: Basis of bearings are grid bearings based from GPS observations.  
Horizontal Datum based on Colorado State Plane Coordinate System Central Zone NAD 83.  
Vertical Datum based on NAVD 88 NGS Triangulation Station SHALE.

NOTE: Record bearings as shown are based on the General Land Office survey, as approved on April 10, 1919 for T 5 S, R 96 W, and July 20, 1914 for T 6 S, R 96 W.

JOB NO. 26099  
04/07/2009 CED  
PAD 596-34D/PAD596-34D PLATS.dwg

696-6A-11  
SHEET 2 OF 2



~SEAL~