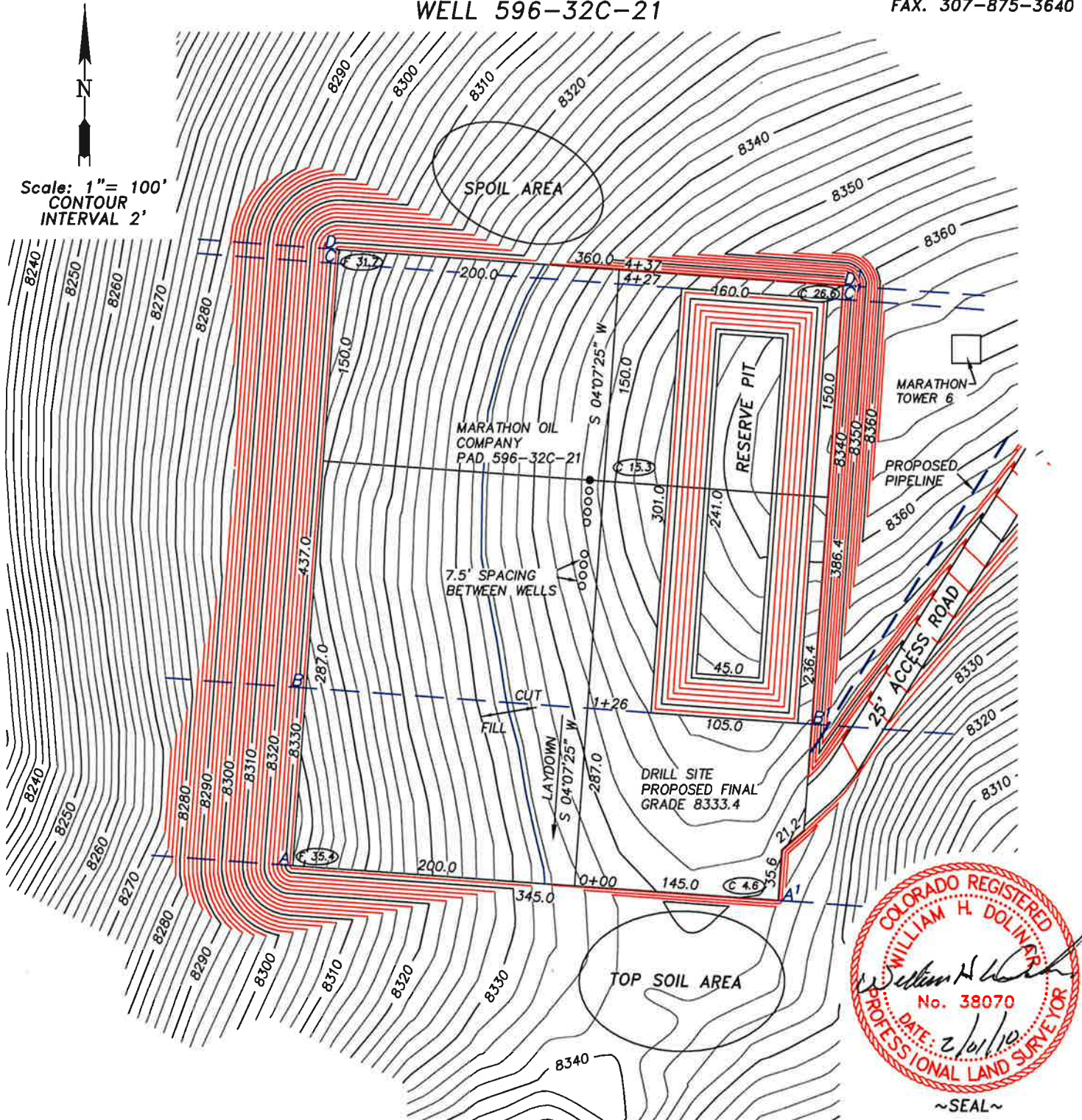


WILLIAM H. SMITH & ASSOCIATES P.C.
SURVEYING CONSULTANTS
MARATHON OIL COMPANY

P.O. BOX 820
GREEN RIVER, WYOMING 82935

550 EAST 2ND NORTH
PH. 307-875-3638
FAX. 307-875-3640

WELL 596-32C-21



RESERVE PIT SIZE
301' X 105' X 15'
SLOPE = 2:1
RESERVE PIT CAPACITY
55,082 BBLs FULL
44,398 BBLs WORKING
CAPACITY WITH 2' FREE BOARD

JOB NO. 26099
01/31/2010 CED
PAD596-32C/COGCC/PAD596-32C.DWG

CUT SLOPES: 1:1
FILL SLOPES: 1.5:1
QUANTITIES:
TOTAL CUT = 74,472 BANK CUBIC YARDS
TOTAL FILL = 65,907 BANK CUBIC YARDS
TOPSOIL AT 12 INCHES OF DEPTH = 8,053 BANK CUBIC YARDS
SPOIL = 512 BANK CUBIC YARDS
DISTURBED AREA = 217,425 SQ. FT. OR 4.99 ACRES

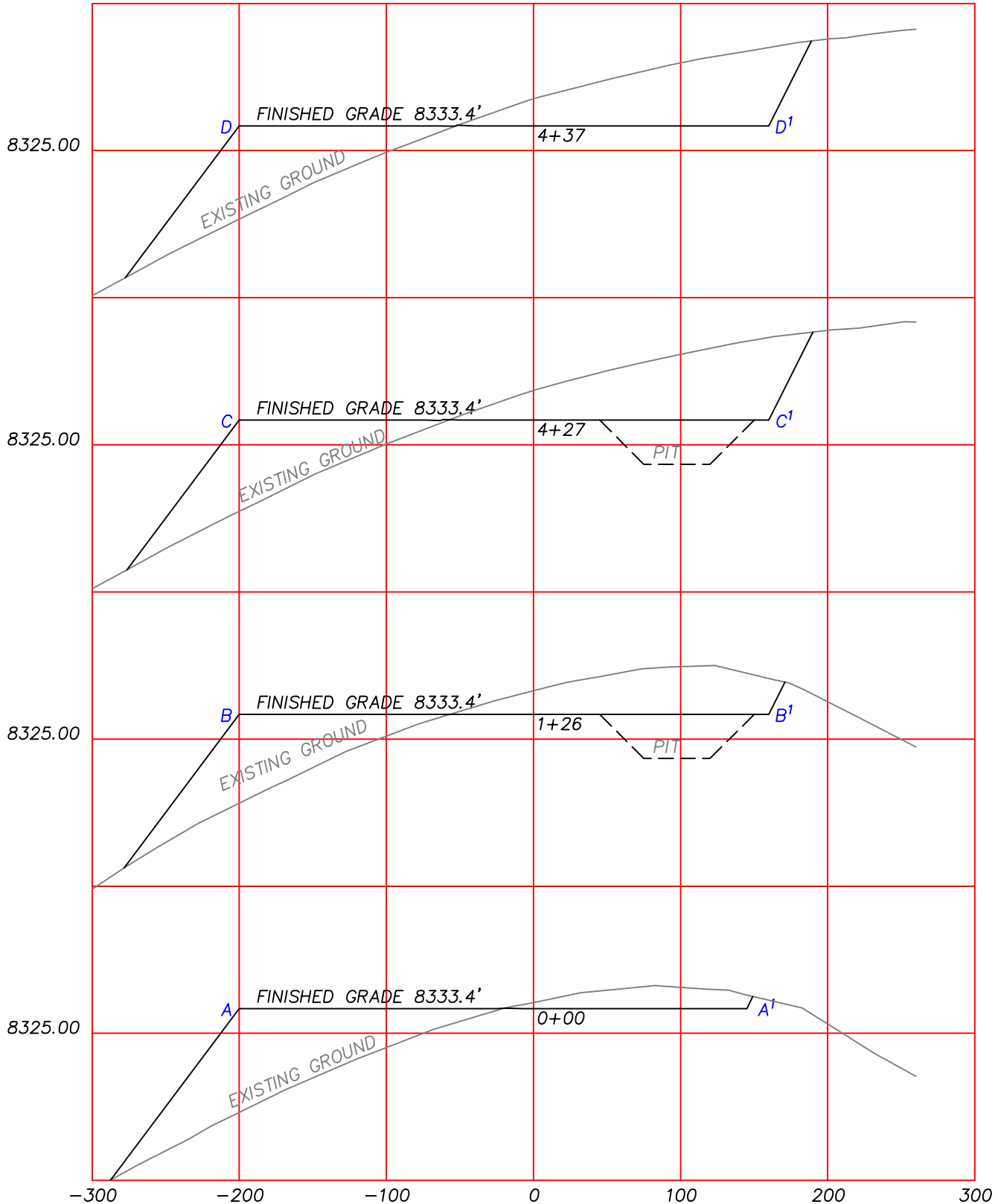
PREPARED FOR:
MARATHON OIL COMPANY
P.O. Box 3128
Houston, TX 77253
5555 San Felipe
Houston, TX 77056

LOCATION:
WELL 596-32C-21
2325' FWL and 1248' FSL WELL FALLS
WITHIN THE SW 1/4 SECTION 32,
T 5 S, R 96 W, 6TH PM.
GARFIELD COUNTY, COLORADO
SHEET 1 OF 4

WILLIAM H. SMITH & ASSOCIATES P.C.
SURVEYING CONSULTANTS
MARATHON OIL COMPANY
PAD 596-32C

P.O. BOX 820
GREEN RIVER, WYOMING 82935

550 EAST 2ND NORTH
PH. 307-875-3638
FAX. 307-875-3640



RESERVE PIT SIZE
301' X 105' X 15'
SLOPE = 2:1

RESERVE PIT CAPACITY
55,082 BBLs FULL
44,398 BBLs WORKING
CAPACITY WITH 2' FREE BOARD

JOB NO. 26099

01/31/2010 CED

PAD596-32C/COGCC/PAD596-32C.DWG

HORIZONTAL SCALE: 1"=100 FEET
VERTICAL SCALE: 1"=50.00 FEET

CUT SLOPES: 1:1
FILL SLOPES: 1.5:1
QUANTITIES:
TOTAL CUT = 74,472 BANK CUBIC YARDS
TOTAL FILL = 65,907 BANK CUBIC YARDS
TOPSOIL AT 12 INCHES OF DEPTH = 8,053 BANK CUBIC YARDS
SPOIL = 512 BANK CUBIC YARDS
DISTURBED AREA = 217,425 SQ. FT. OR 4.99 ACRES

PREPARED FOR:
MARATHON OIL COMPANY
P.O. Box 3128
Houston, TX 77253
5555 San Felipe
Houston, TX 77056

LOCATION:
PAD 596-32C
WITHIN THE SW 1/4 SECTION 32,
T 5 S, R 96 W, 6TH PM.
GARFIELD COUNTY, COLORADO
SHEET 2 OF 4

WILLIAM H. SMITH & ASSOCIATES P.C.
SURVEYING CONSULTANTS
MARATHON OIL COMPANY

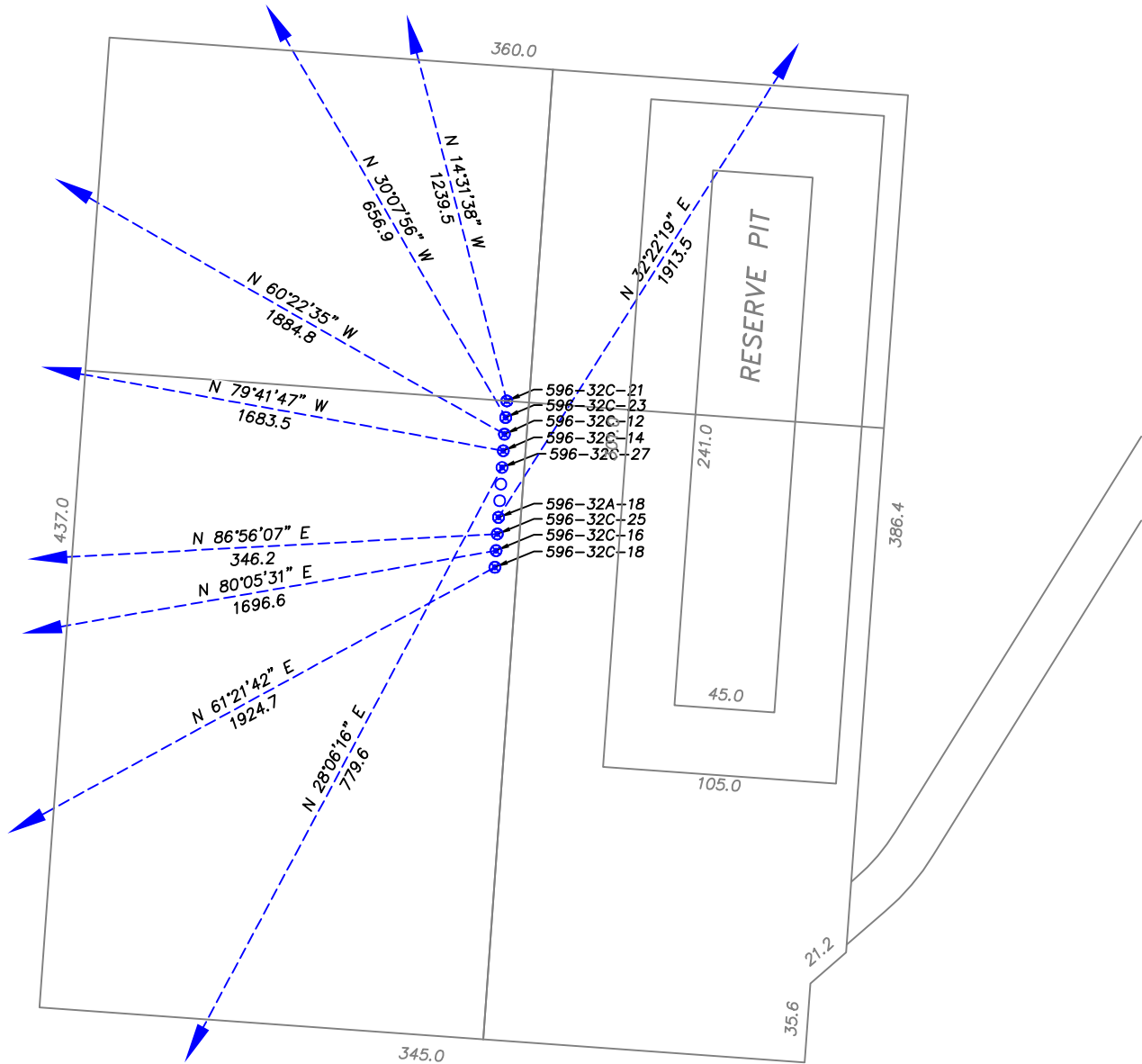
P.O. BOX 820
GREEN RIVER, WYOMING 82935

550 EAST 2ND NORTH
PH. 307-875-3638
FAX. 307-875-3640

PAD 596-32C DIRECTION LAYOUT



Scale: 1" = 80'



RESERVE PIT SIZE
301' X 105' X 15'
SLOPE = 2:1

RESERVE PIT CAPACITY
55,082 BBLs FULL
44,398 BBLs WORKING
CAPACITY WITH 2' FREE BOARD

JOB NO. 26099
01/30/2010 CED
PAD596-32C/COGCC/PAD596-32C DRILL DIRECTION.DWG

PREPARED FOR:
MARATHON OIL COMPANY
P.O. Box 3128
Houston, TX 77253
5555 San Felipe
Houston, TX 77056

LOCATION:
PAD 596-32C
WITHIN THE SW/4 SECTION 32,
T5S, R96W, 6TH PM.
GARFIELD COUNTY, COLORADO
SHEET 3 OF 4

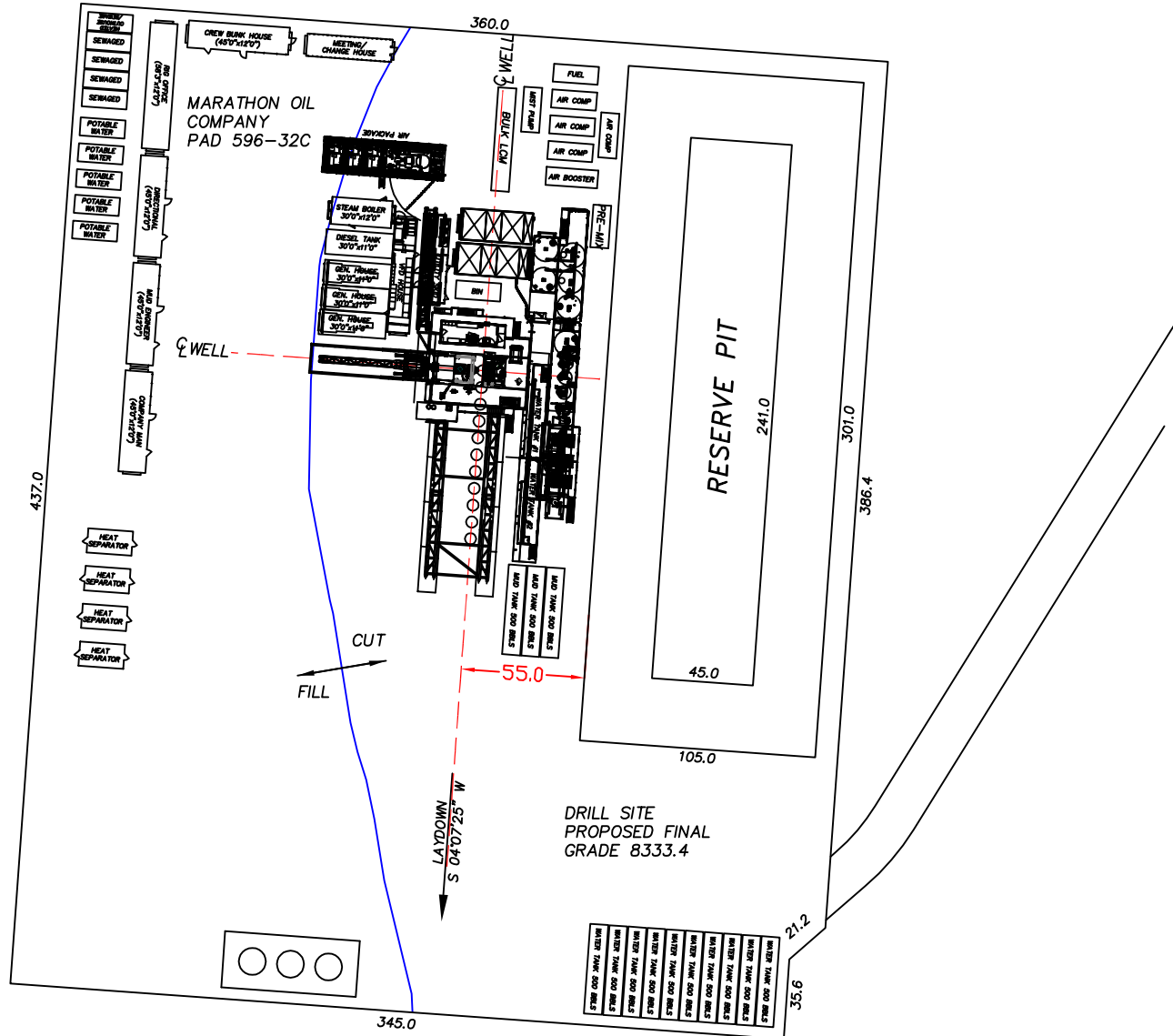
WILLIAM H. SMITH & ASSOCIATES P.C.
SURVEYING CONSULTANTS
MARATHON OIL COMPANY
PAD 596-32C FACILITY LAYOUT

P.O. BOX 820
GREEN RIVER, WYOMING 82935

550 EAST 2ND NORTH
PH. 307-875-3638
FAX. 307-875-3640



Scale: 1" = 80'



RESERVE PIT SIZE
301' X 105' X 15'
SLOPE = 2:1

RESERVE PIT CAPACITY
55,082 BBLs FULL
44,398 BBLs WORKING
CAPACITY WITH 2' FREE BOARD

JOB NO. 26099
01/30/2010 CED
PAD596-32C/COGCC/PAD596-32C FACILITIES.DWG

PREPARED FOR:
MARATHON OIL COMPANY
P.O. Box 3128
Houston, TX 77253
5555 San Felipe
Houston, TX 77056

LOCATION:
PAD 596-32C
WITHIN THE SW 1/4 SECTION 32,
T 5 S, R 96 W, 6TH PM.
GARFIELD COUNTY, COLORADO
SHEET 4 OF 4