

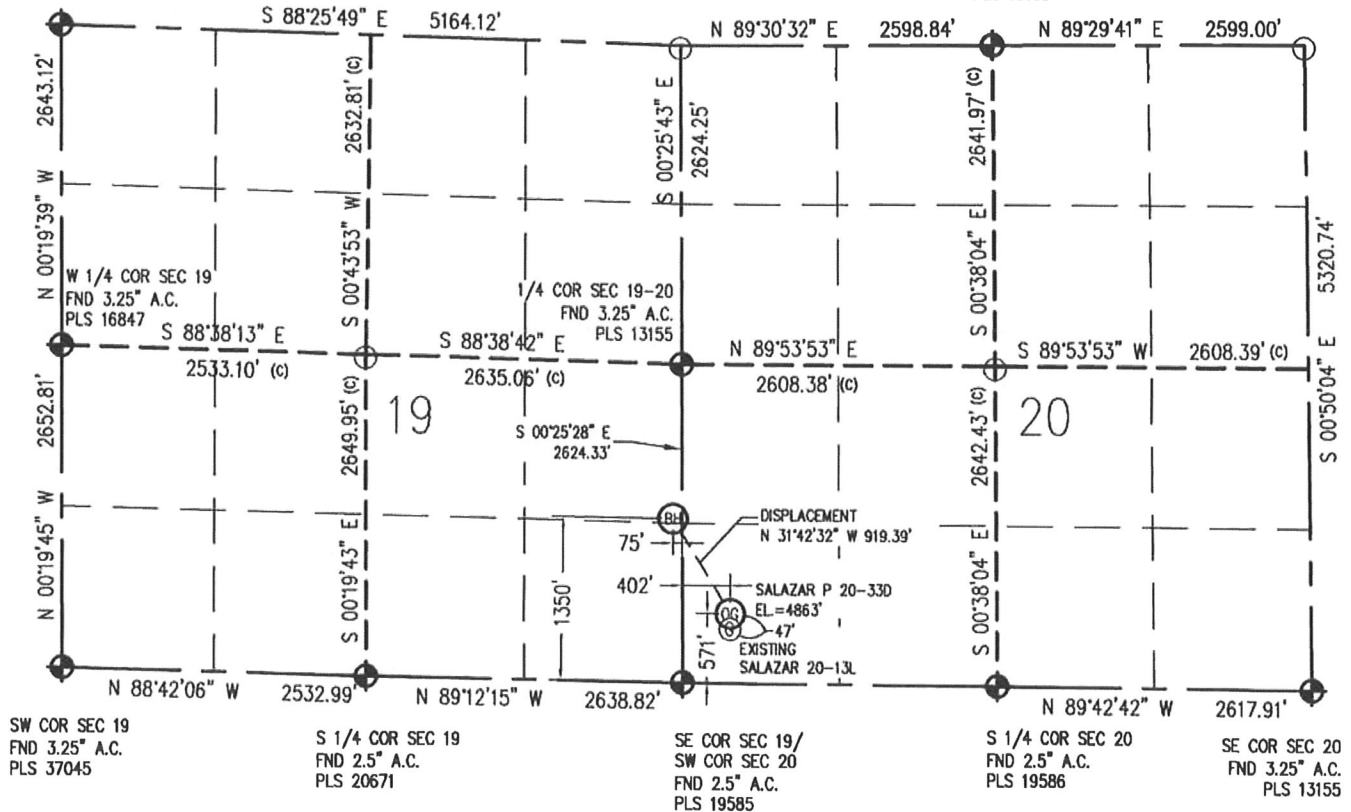
WELL LOCATION CERTIFICATE

THIS MAP DOES NOT REPRESENT A BOUNDARY SURVEY

SECTION 19 & 20
TOWNSHIP 3 NORTH
RANGE 67 WEST

NW COR SEC 19
FND 2.5" A.C.
PLS 16847

N 1/4 COR SEC 20
FND 3.25" A.C.
PLS 13155



IN ACCORDANCE WITH A REQUEST FROM MATT CAMPBELL - NOBLE ENERGY INC, BASELINE ENGINEERING CORP. HAS DETERMINED THE LOCATION OF THE SALAZAR P 20-33D TO BE 571' FSL, 402' FWL, AS MEASURED AT NINETY (90) DEGREES FROM THE SECTION LINE OF SECTION 20, TOWNSHIP 3 NORTH, RANGE 67 WEST AND THE BOTTOM HOLE LOCATION TO BE 75' FEL AND 1350' FSL OF SECTION 19, TOWNSHIP 3 NORTH, RANGE 67 WEST, 6TH PRINCIPAL MERIDIAN, WELD COUNTY, COLORADO.

I HEREBY CERTIFY THAT THIS WELL LOCATION CERTIFICATE WAS PREPARED BY ME, OR UNDER MY DIRECT SUPERVISION, THAT THE FIELD WORK WAS COMPLETED ON 9/25/2009, THAT IT IS NOT A LAND SURVEY PLAT OR AN IMPROVEMENT SURVEY PLAT, AND THAT IT IS NOT TO BE RELIED UPON FOR ESTABLISHMENT OF FENCE, BUILDING, OR OTHER FUTURE IMPROVEMENT LINES.

Scale 1" = 1000 ft



NOTES:

- 1) LAT/LONG SHOWN ARE BASED ON A GPS OBSERVATION (NAD83).
- 2) BEARINGS SHOWN ARE GRID BEARINGS OF THE COLORADO STATE PLANE COORDINATE SYSTEM, NORTH ZONE, NORTH AMERICAN DATUM 1983/2007.
- 3) GROUND ELEVATIONS ARE BASED ON A GPS OBSERVATION (NAVD 88 DATUM).
- 4) ALL DISTANCES SHOWN ARE FIELD MEASURED UNLESS OTHERWISE NOTED.
- 5) THE NEAREST EXISTING WELL IS: SALAZAR 20-13L 47' SOUTH.
- 6) IMPROVEMENTS: SEE VISIBLE IMPROVEMENTS EXHIBIT FOR ALL VISIBLE IMPROVEMENTS WITHIN 400' OF WELL HEAD.
- 7) SURFACE USE: PASTURE.

NOTICE: According to Colorado law you MUST commence any legal action based upon any defect in this W.L.C. within three years after you first discover such defect. In no event may any action based upon any defect in this W.L.C. be commenced more than ten years from this said date of the certification shown hereon.

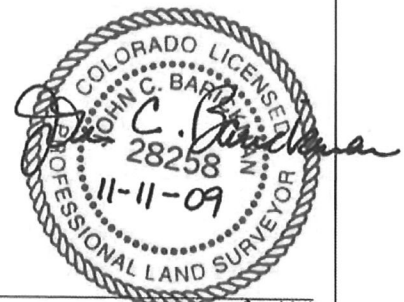
LATITUDE & LONGITUDE (NAD 83 SURFACE HOLE):

LATITUDE: N 40.205775°
LONGITUDE: W 104.921826°
PDOP: 1.3
1/4, 1/4: SW1/4SW1/4
NEAREST PROPERTY LINE: 220' SW

BOTTOM HOLE:
LATITUDE: N 40.207930°
LONGITUDE: W 104.923537°

LEGEND

- - FOUND/SET SURVEY MONUMENT PER MONUMENT RECORD EXCEPTIONS NOTED.
- - CALCULATED SURVEY MONUMENT POSITION
- (c) - CALCULATED DIMENSION

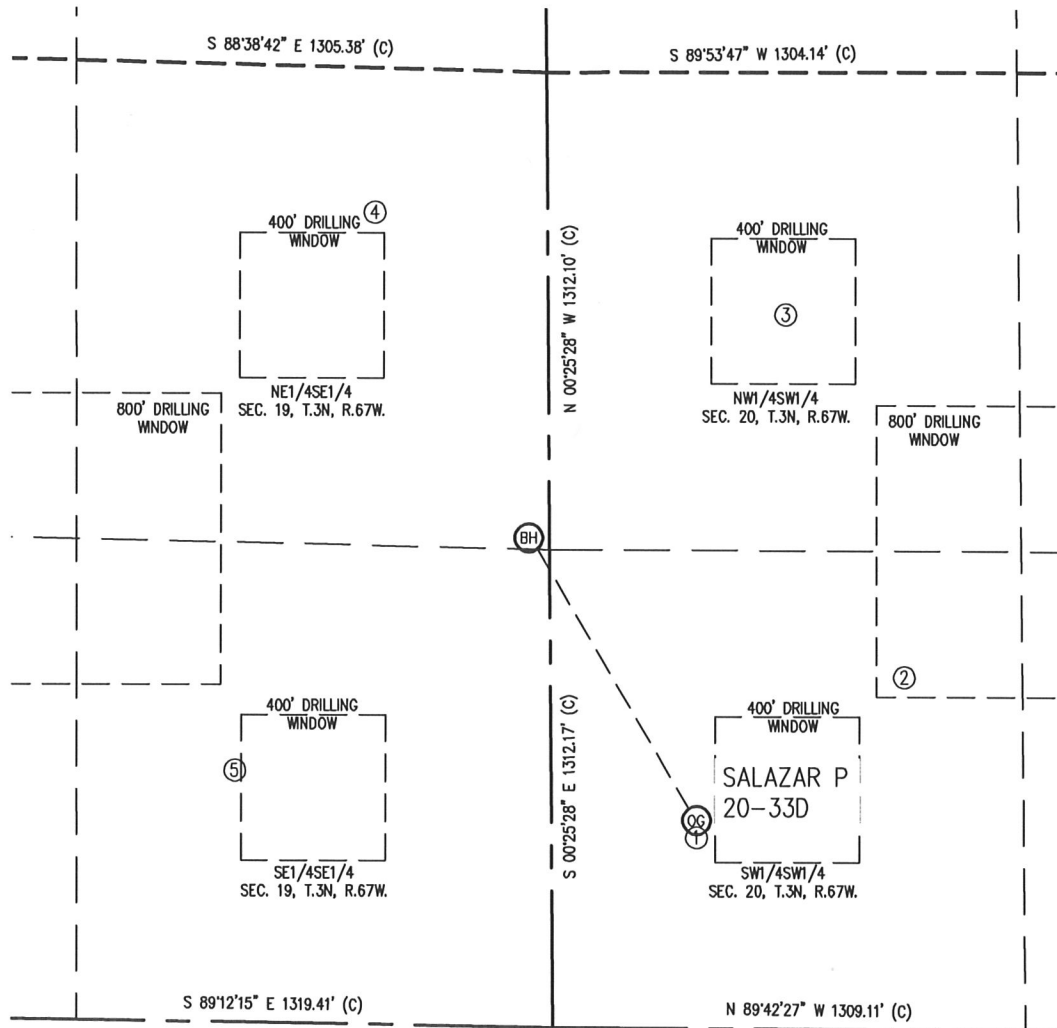


John C. Barickman
Professional Land Surveyor Registration No. 28258
State of Colorado
FOR AND ON BEHALF OF BASELINE ENGINEERING CORP.

Completed
11/9/2009

JOB #: NOB3N67W20-02

SITE SKETCH

SECTION 19 & 20
TOWNSHIP 3 NORTH
RANGE 67 WEST

①	②	③	④	⑤
SALAZAR 20-13L	SALAZAR FAMILY GU #1	SALAZAR 20-12L	UPRC 19-9J7	UPRC 19-16L
SW/SW	SW/SW	NW/SW	NE/SE	SE/SE
402' FWL	969' FSL	1964' FSL	2232' FSL	877' FEL
524' FSL	982' FWL	659' FWL	479' FEL	691' FSL
EL 4864'	EL 4858'	EL 4880'	EL 4898'	EL 4895'
N 40.205646°	N 40.206846°	N 40.209588°	N 40.210374°	N 40.206166°
W 104.921828°	W 104.919755°	W 104.920911°	W 104.924986°	W 104.926406°
PDOP: 1.3	PDOP: 1.1	PDOP: 1.4	PDOP: 2.3	PDOP: 1.4

NOTES:

- THIS SKETCH DOES NOT REPRESENT A BOUNDARY SURVEY.
- THE DATUM FOR THE LATITUDES AND LONGITUDES ON THIS SKETCH IS NAD83.

