

T6S, R96W, 6th P.M.

LINE TABLE		
LINE	BEARING	LENGTH
L1	N00°02'02"E	718.08'
L2	N89°56'20"W	319.44'

1912 Brass Cap, 0.4' High, E-W Fenceline, Pile of Stones
Lat: 39.546719
Long: 108.121375

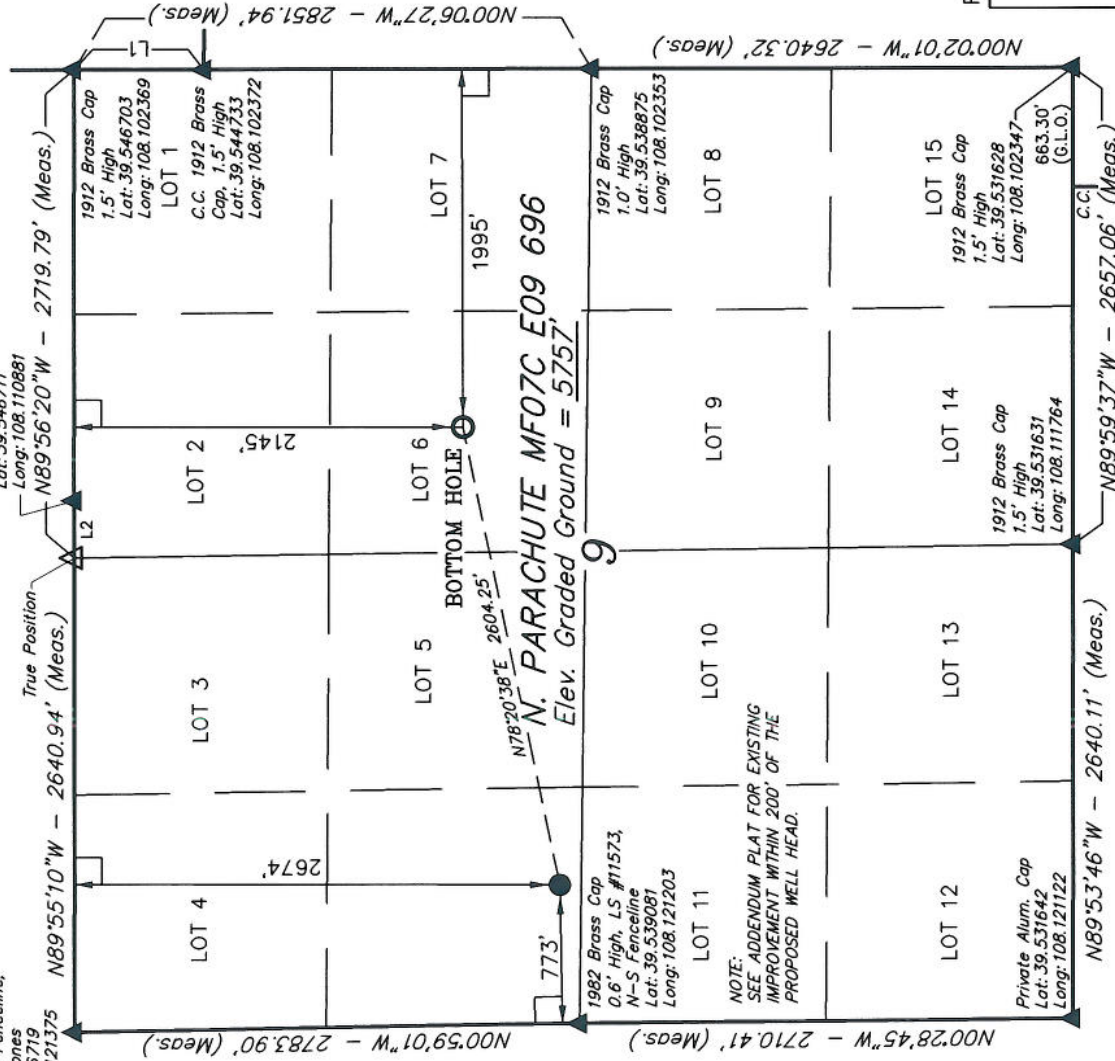
Well location, N. PARACHUTE MF07C E09 696,
located as shown in the SW 1/4 NW 1/4 of
Section 9, T6S, R96W, 6th P.M., Garfield
County, Colorado.

BASIS OF ELEVATION

SPOT ELEVATION AT THE NORTHWEST CORNER OF SECTION 30, T5S, R95W, 6th P.M. TAKEN FROM THE FORKED GULCH QUADRANGLE, COLORADO, GARFIELD COUNTY, 7.5 MINUTE SERIES (TOPOGRAPHICAL MAP) PUBLISHED BY THE UNITED STATES DEPARTMENT OF THE INTERIOR, GEOLOGICAL SURVEY. SAID ELEVATION IS MARKED AS BEING 5966 FEET.

BASIS OF BEARINGS

BASIS OF BEARINGS IS A G.P.S. OBSERVATION.



NOTE:
SEE ADDENDUM PLAT FOR EXISTING
IMPROVEMENT WITHIN 200' OF THE
PROPOSED WELL HEAD.

THIS IS TO CERTIFY THAT THE ABOVE PLAT WAS PREPARED FROM FIELD NOTES OF ACTUAL SURVEYS MADE BY ME OR UNDER MY SUPERVISION AND THAT THE SAME ARE TRUE AND CORRECT TO THE BEST OF MY KNOWLEDGE AND BELIEF.

REGISTERED LAND SURVEYOR
REGISTRATION NO. 17492
STATE OF COLORADO

Revised: 12-24-08 D.R.B.

UTAH ENGINEERING & LAND SURVEYING

85 SOUTH 200 EAST - VERNAL, UTAH 84078

(435) 789-1017

LEGEND:

$\angle = 90^\circ$ SYMBOL

● = PROPOSED WELL HEAD.

▲ = SECTION CORNERS LOCATED.

SCALE	1" = 100'	DATE SURVEYED:	DATE DRAWN:
PARTY		04-12-07	06-11-07
B.H.	F.Y.	D.R.B.	
WEATHER	COOL	REFERENCES	G.L.O. PLAT
		FILE	
			EnCana Oil & Gas(USA) INC.

NAD 83 (TARGET BOTTOM HOLE)		NAD 83 (SURFACE LOCATION)	
LATITUDE = 39°32'26.96"	(39.540822)	LATITUDE = 39°32'21.76"	(39.538378)
LONGITUDE = 108°06'33.94"	(108.109428)	LONGITUDE = 108°07'06.49"	(108.118469)
NAD 27 (TARGET BOTTOM HOLE)		NAD 27 (SURFACE LOCATION)	
LATITUDE = 39°32'27.04"	(39.540844)	LATITUDE = 39°32'21.84"	(39.538940)
LONGITUDE = 108°06'31.66"	(108.108794)	LONGITUDE = 108°07'04.70"	(108.117836)