

Patterson

**CEMENT BOND
GAMMA RAY**

Company Pioneer Natural Resources
Well Lorencio 7-30-34-66
Field Purgatorie River
County Las Animas
State CO

Company Pioneer Natural Resources
Well Lorencio 7-30-34-66
Field Purgatorie River
County Las Animas State CO

Location: API # : 05 071 08 00
1832' FNL & 2212' FEL

Other Services
DEVI. SURV./
TEMP.

Permanent Datum Ground Level Elevation 7282'
Log Measured From Kelly Bushing 4' Above G.L.
Drilling Measured From Kelly Bushing

Elevation

K.B. 7286'
D.F. -----
G.L. 7282'

Date

8/30/05

Run Number

one

Depth Driller

1500'

Depth Logger

1476'

Bottom Logged Interval

1472'

Top Log Interval

Surf.

Open Hole Size

7 7/8"

Type Fluid

water

Density / Viscosity

///

Max. Recorded Temp.

108F

Estimated Cement Top

Surf.

Time Well Ready

ROA

Time Logger on Bottom

12:33

Equipment Number

T244

Location

Trinidad

Recorded By

Worley

Witnessed By

Run Number

Bit

From

To

Size

Weight

From

To

Size

Wgt/Ft

Top

Bottom

Surface String

8 5/8"

Prot. String

00

Production String

5 1/2"

Liner

00

NA

<<< Fold Here >>>

All interpretations are opinions based on inferences from electrical or other measurements and we cannot and do not guarantee the accuracy or correctness of any interpretation, and we shall not, except in the case of gross or willful negligence on our part, be liable or responsible for any loss, costs, damages, or expenses incurred or sustained by anyone resulting from any interpretation made by any of our officers, agents or employees. These interpretations are also subject to our general terms and conditions set out in our current Price Schedule.

Comments

Lorencito Canyon Across Bridge, Right Towards XTO, First Right To Location.

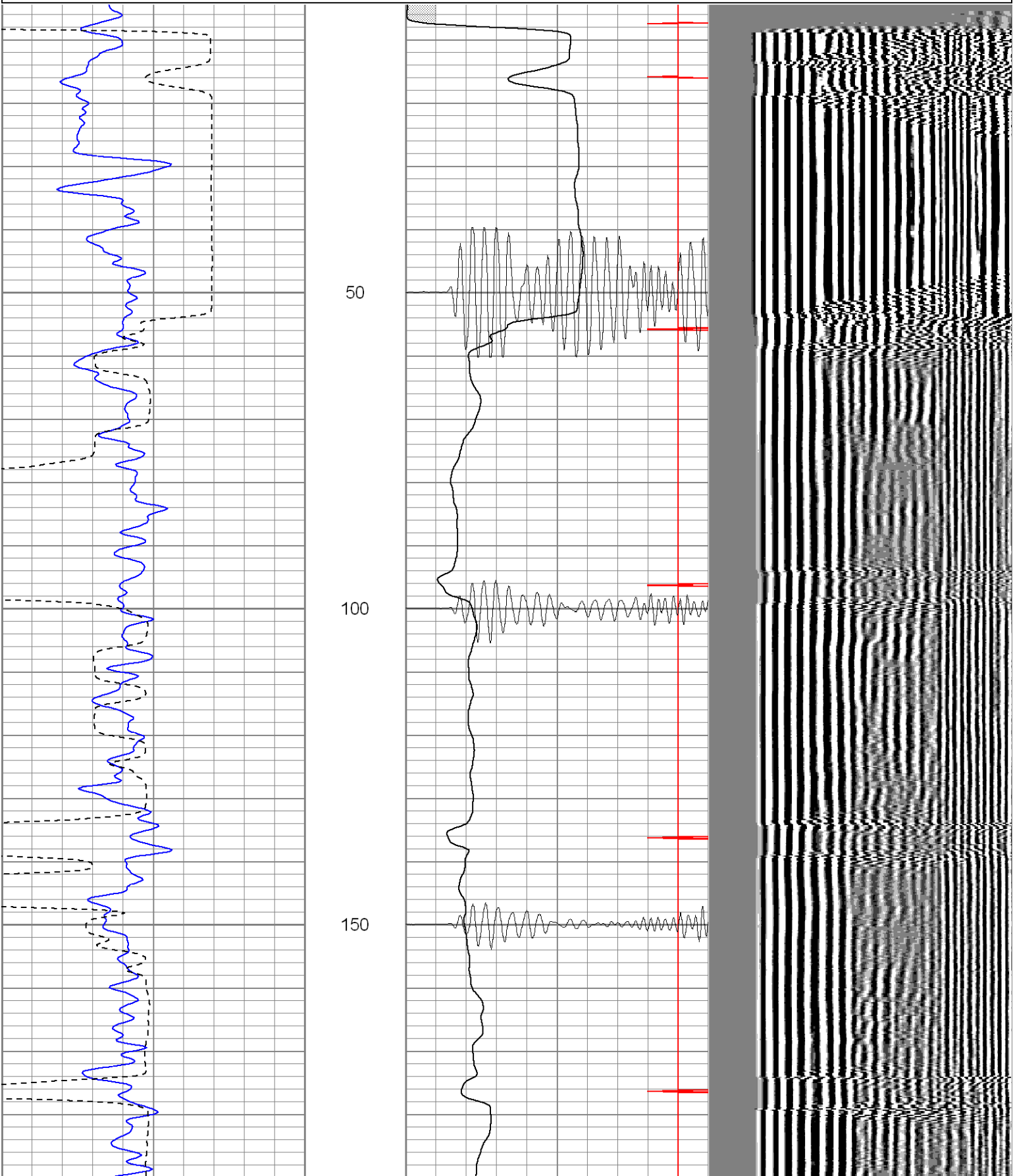
1 Degree Of Deviation @ T.D.

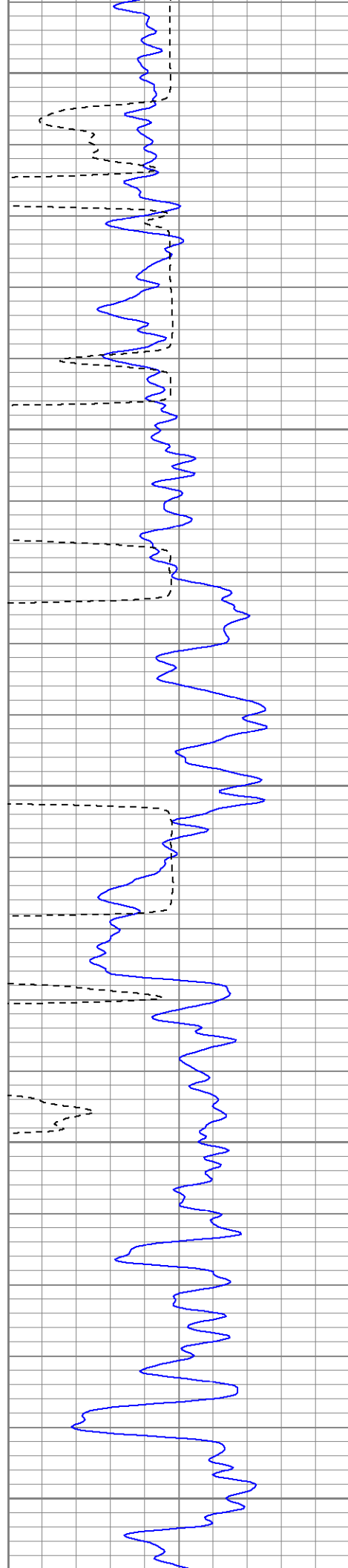
Patterson

Main Pass

Database File: lorencito7-30b83005.db
Dataset Pathname: pass2
Presentation Format: cblrt
Dataset Creation: Tue Aug 30 12:42:36 2005 by Log Warrior 7.0 STD Cas
Charted by: Depth in Feet scaled 1:240

0	GR (GAPI)	200	0	AMP3 (mV)	100	200	Variable Density	1200
400	TT3 (usec)	200	18	CCL	-2			
			200	CBL5	1200			





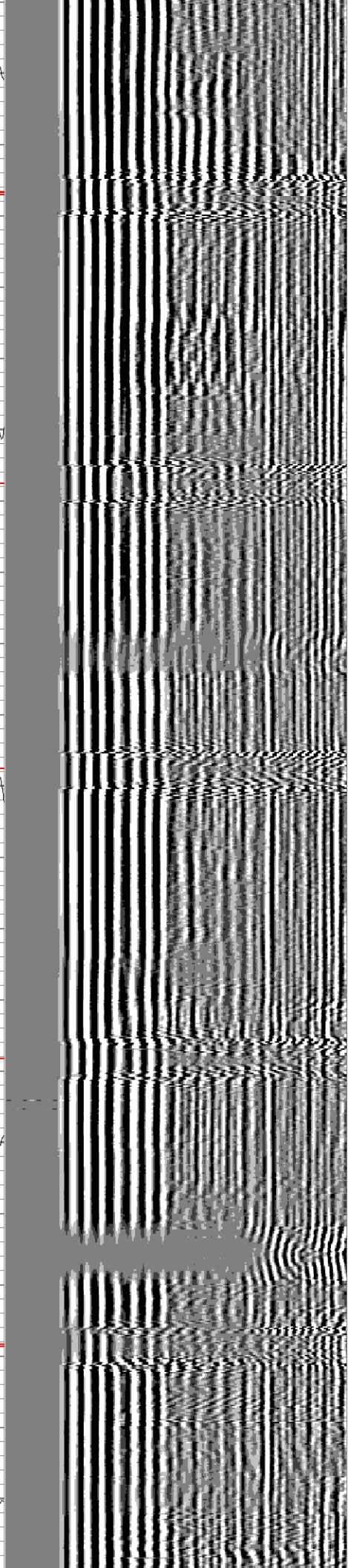
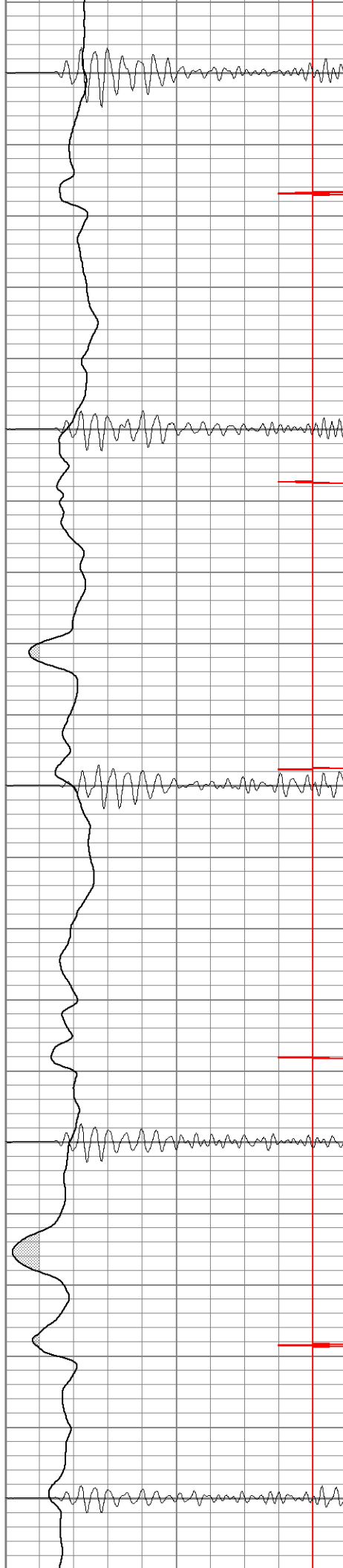
200

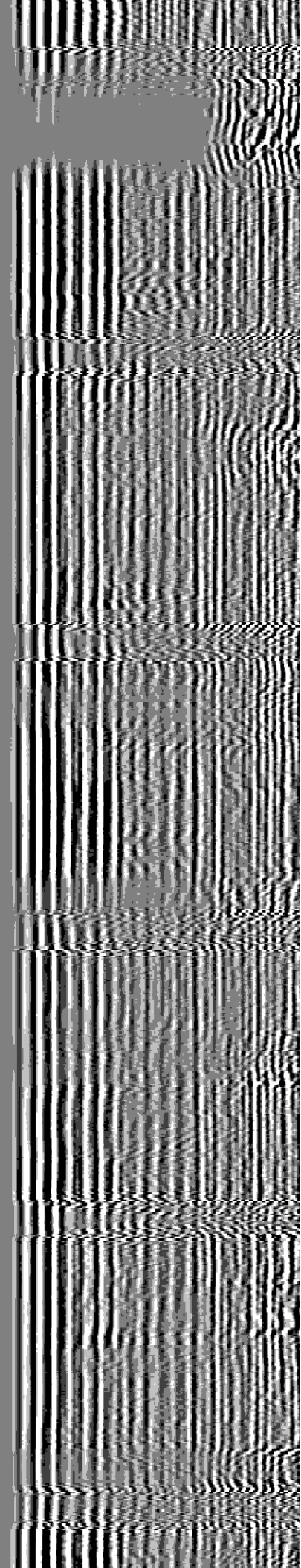
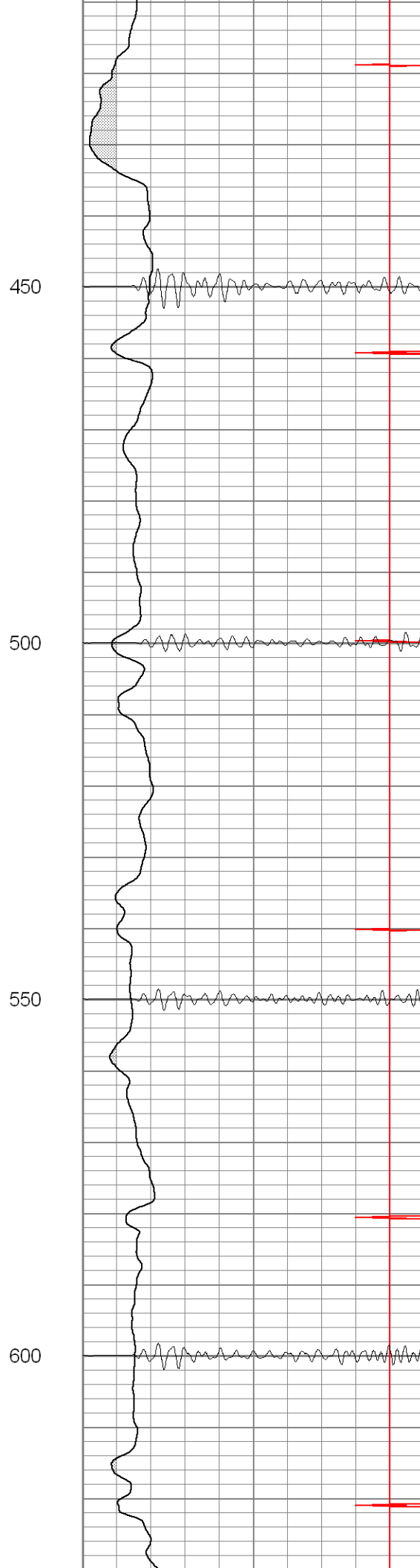
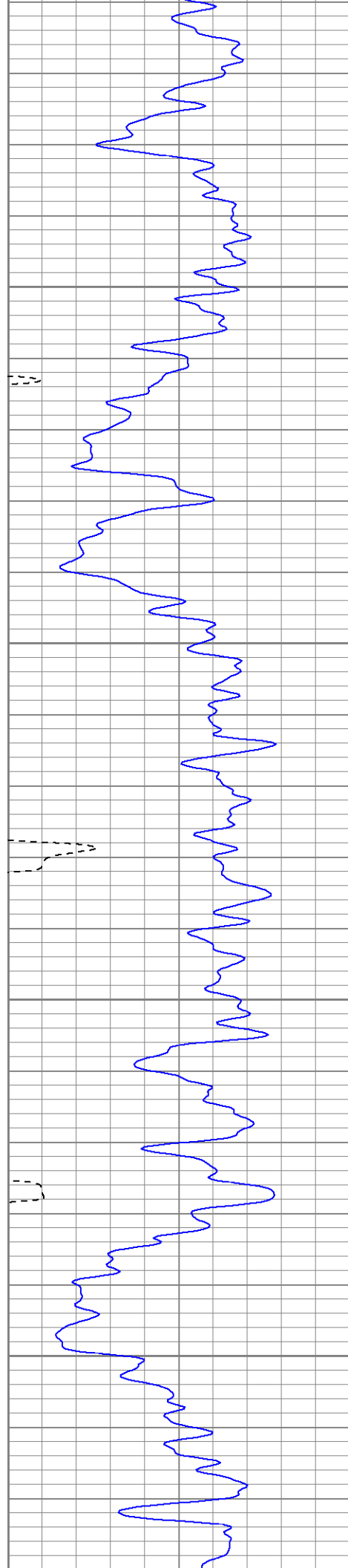
250

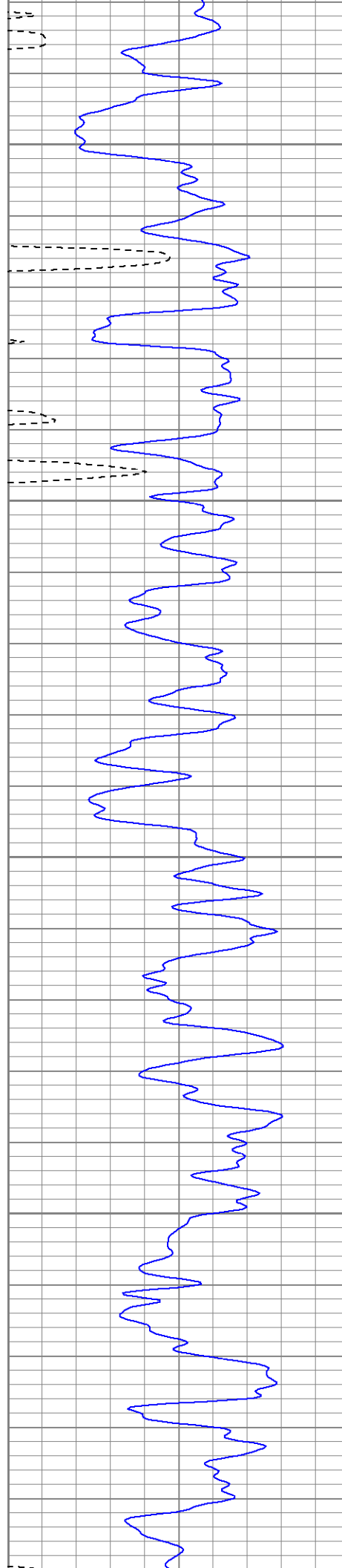
300

350

400







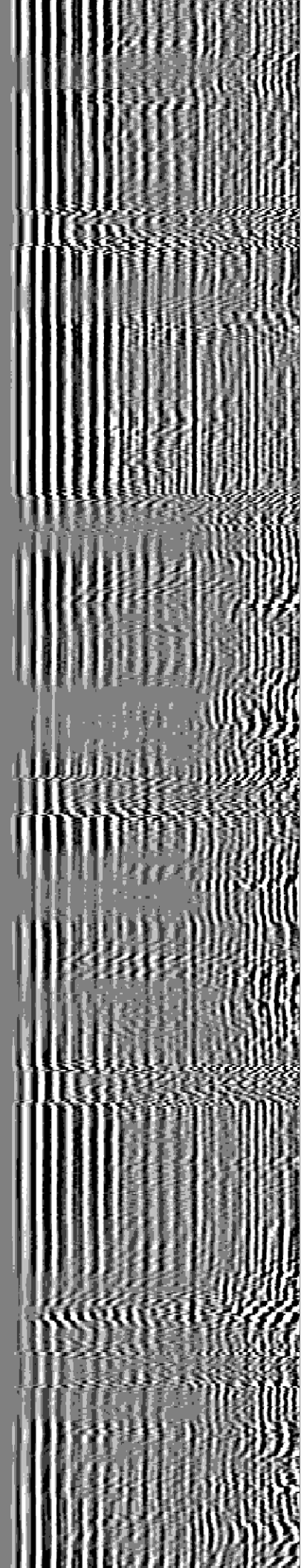
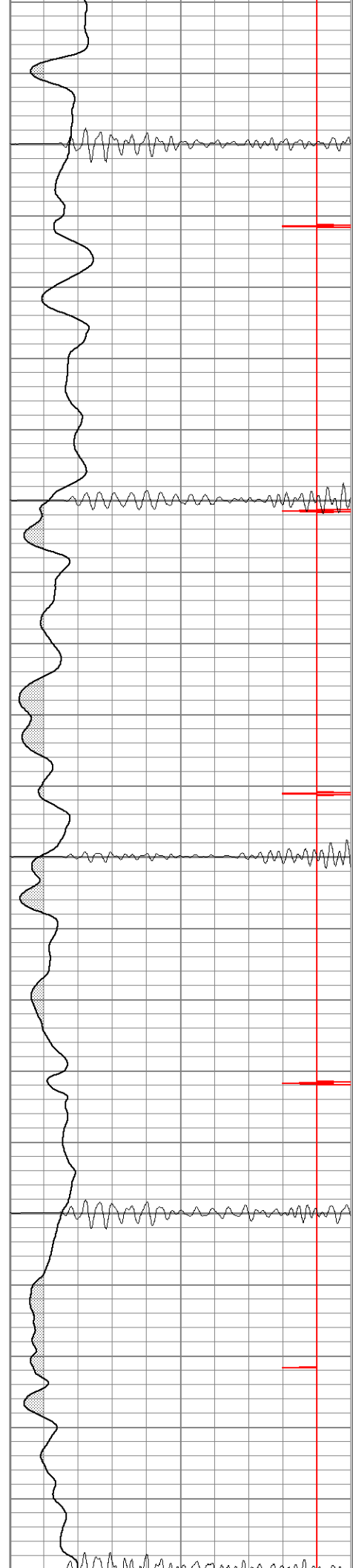
650

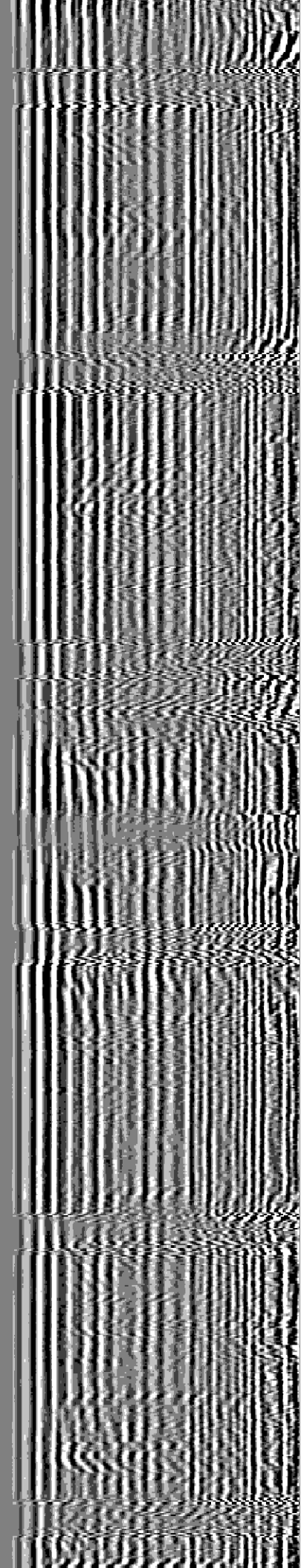
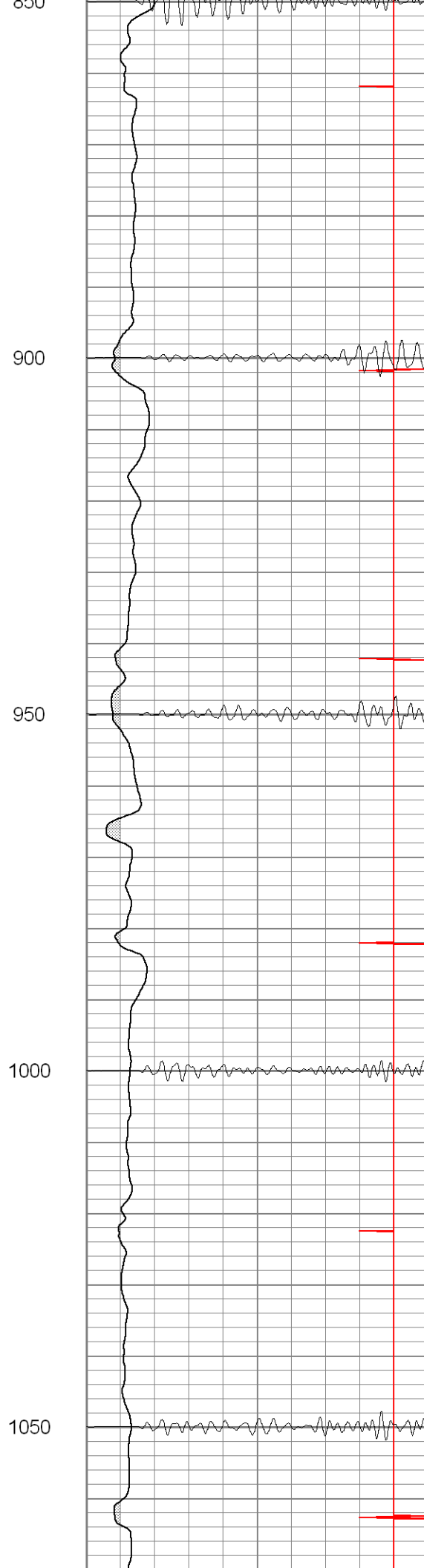
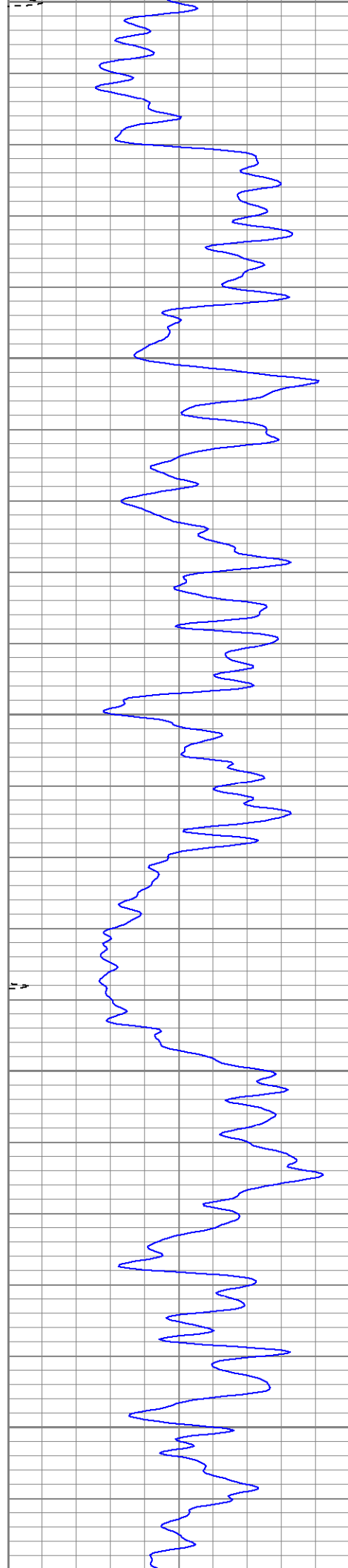
700

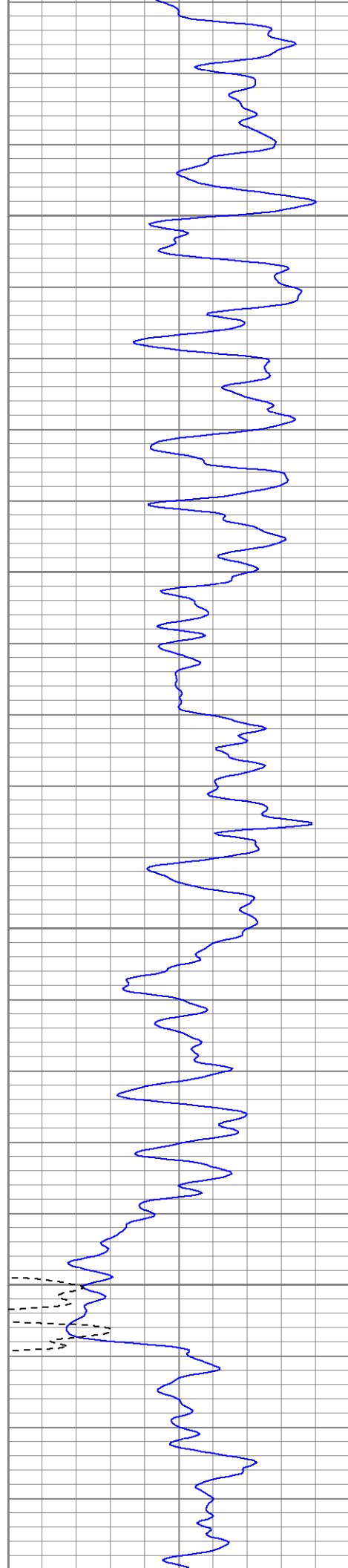
750

800

850





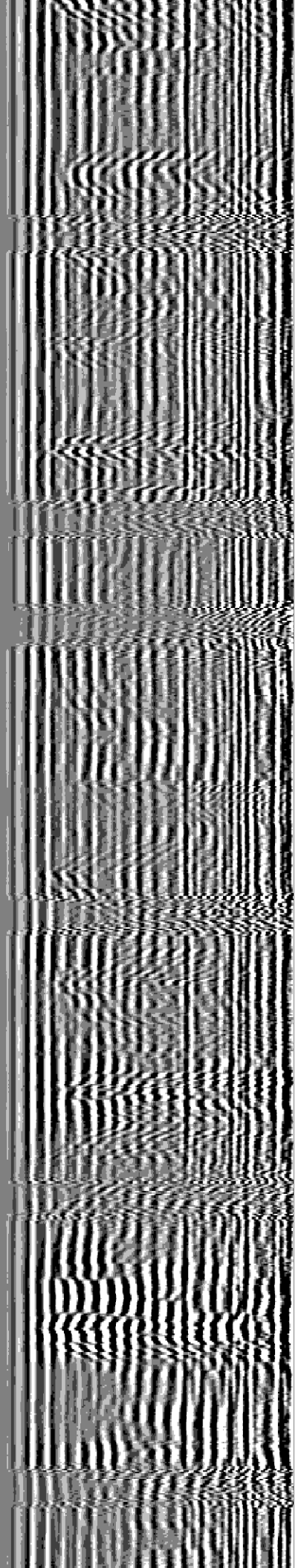
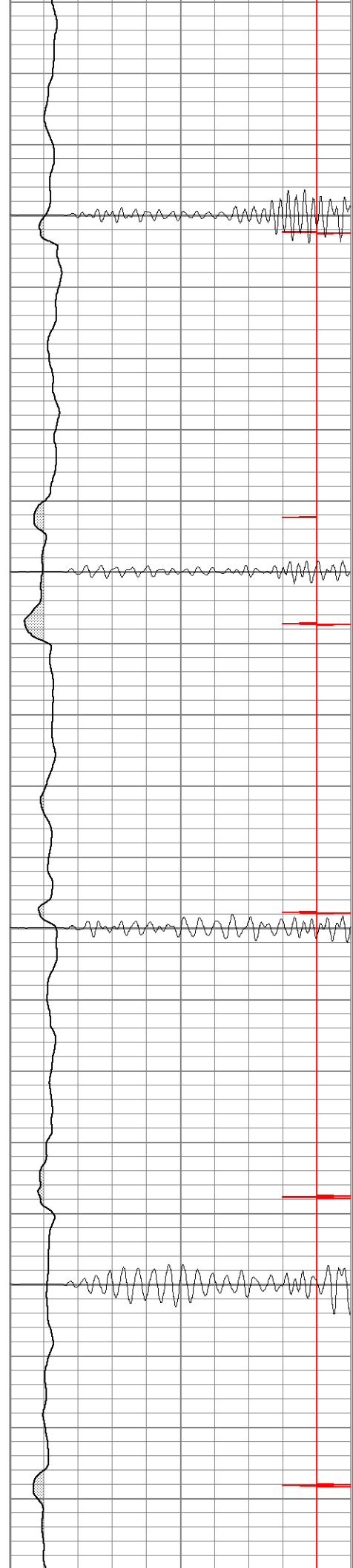


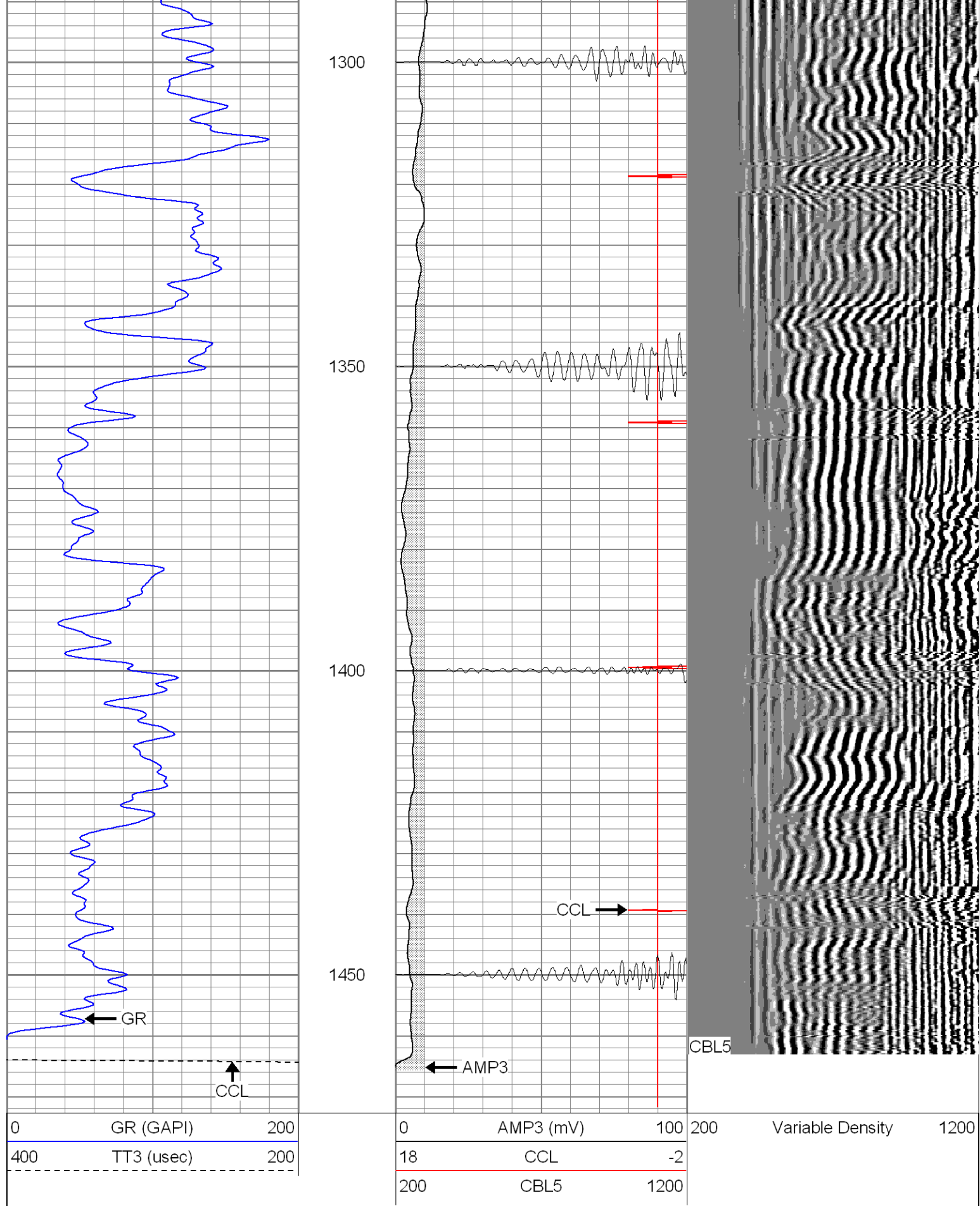
1100

1150

1200

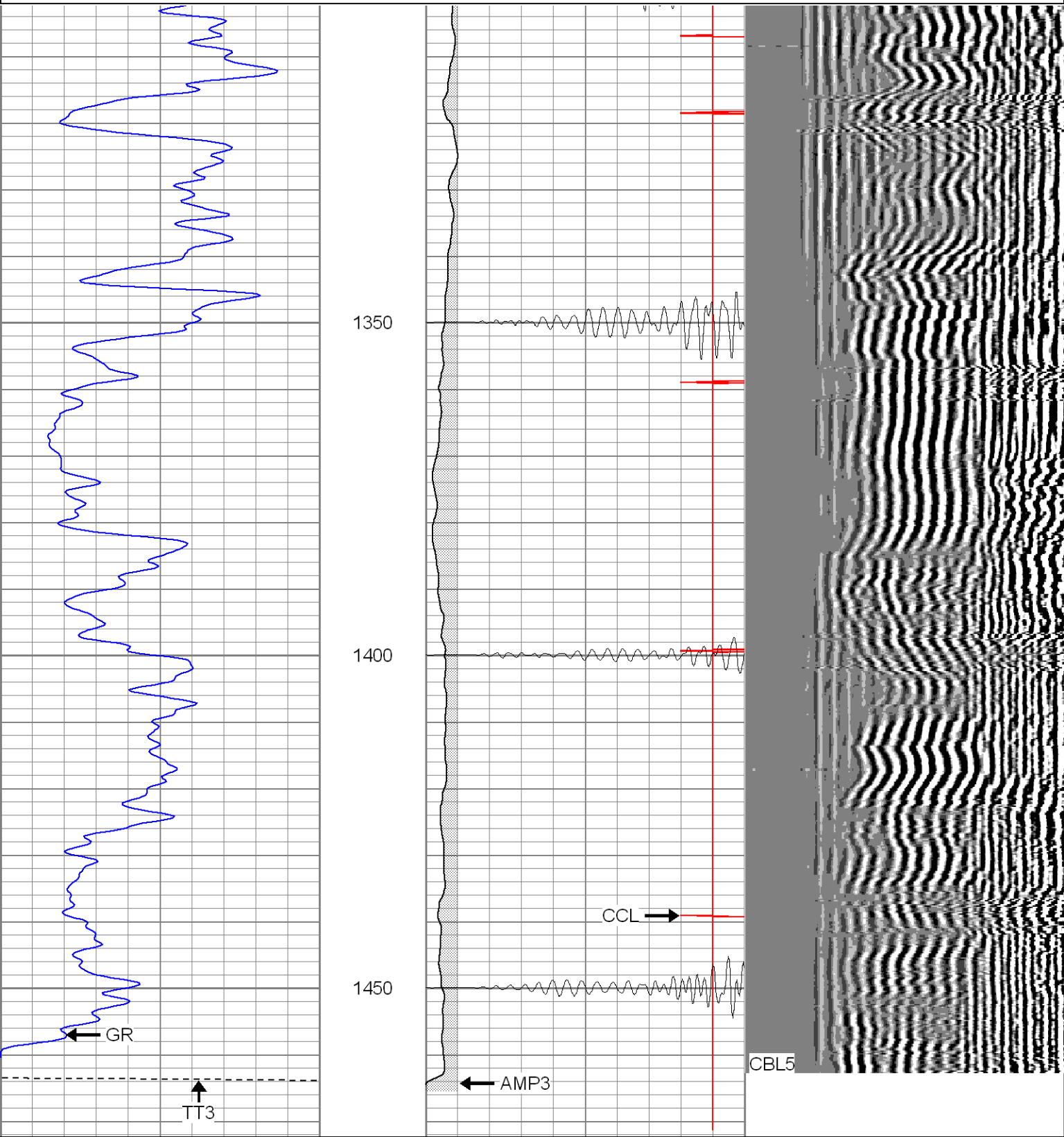
1250





Database File: lorencito7-30b83005.db
Dataset Pathname: pass1
Presentation Format: cblrt
Dataset Creation: Tue Aug 30 12:37:03 2005 by Log Warrior 7.0 STD Cas
Charted by: Depth in Feet scaled 1:240

0	GR (GAPI)	200	0	AMP3 (mV)	100	200	Variable Density	1200
400	TT3 (usec)	200	18	CCL	-2			
			200	CBL5	1200			



0	GR (GAPI)	200	0	AMP3 (mV)	100	200	Variable Density	1200
400	TT3 (usec)	200	18	CCL	-2			

Cement Bond Log Calibration Report

Serial Number:	Titan3		
Tool Model:	T3		
Performed:	Tue Aug 30 09:49:21 2005		
Depth:	0	ft	
Casing Diameter:	0	in	
	3' Spacing	5' Spacing	
Signal Zero:	1	1	mV
Calibrated Amplitude:	85	85	mV
Reading at Signal Zero:	0.02	0.01	V
Reading in Free Pipe:	1.3	2.3	V
Gain:	65.625	36.6812	
Offset:	-0.3125	0.633188	

Gamma Ray Calibration Report

Serial Number:	Titan3	
Tool Model:	T2	
Performed:	Thu May 26 09:05:00 2005	
Calibrator Value:	1.0	GAPI
Background Reading:	0.0	cps
Calibrator Reading:	1.0	cps
Sensitivity:	1.2000	GAPI/cps