



SUPERIOR
Black Lick, Pa.
Mercer, Pa.
Wooster, Oh.
Cleveland, Ok.
Trinidad, Co.

DUAL INDUCTION LOG

Company XTO Energy Inc.
Well Hill Ranch 36-11
Field Purgatoire River
County Las Animas State Colorado

Location: API # : 05 071 09531 00

1564' FSL & 2390' FWL

SEC 36 TWP 34S RGE 67W

Other Services
CDL
NEUTRON

Permanent Datum Ground Level Elevation 7788'
Log Measured From Ground Level
Drilling Measured From Ground Level

Elevation
K.B. -----
D.F. -----
G.L. 7788'

Date	5-4-08		
Run Number	One		
Depth Driller	2400'		
Depth Logger	2386'		
Bottom Logged Interval	2384'		
Top Log Interval	Surface Casing		
Casing Driller	8 5/8" @ 470'		
Casing Logger	466'		
Bit Size	7 7/8"		
Type Fluid in Hole	Water		
Density / Viscosity	///		
pH / Fluid Loss	///		
Source of Sample	///		
Rm @ Meas. Temp	///		
Rmf @ Meas. Temp	///		
Rmc @ Meas. Temp	///		
Source of Rmf / Rmc	///		
Rm @ BHT	///		
Time Circulation Stopped	9:00 A.M.		
Time Logger on Bottom	11:15 A.M.		
Maximum Recorded Temperature	116 DEG F		
Equipment Number	T697		
Location	Trinidad		
Recorded By	J. Cappellucci		
Witnessed By	Mr. Dalton King		

<<< Fold Here >>>

All interpretations are opinions based on inferences from electrical or other measurements and we cannot and do not guarantee the accuracy or correctness of any interpretation, and we shall not, except in the case of gross or willful negligence on our part, be liable or responsible for any loss, costs, damages, or expenses incurred or sustained by anyone resulting from any interpretation made by any of our officers, agents or employees. These interpretations are also subject to our general terms and conditions set out in our current Price Schedule.

Comments

Well Directions:

Lorencito to XTO hill, follow all the way to top, cross cattleguard,
second left dead ends on location.



SUPERIOR

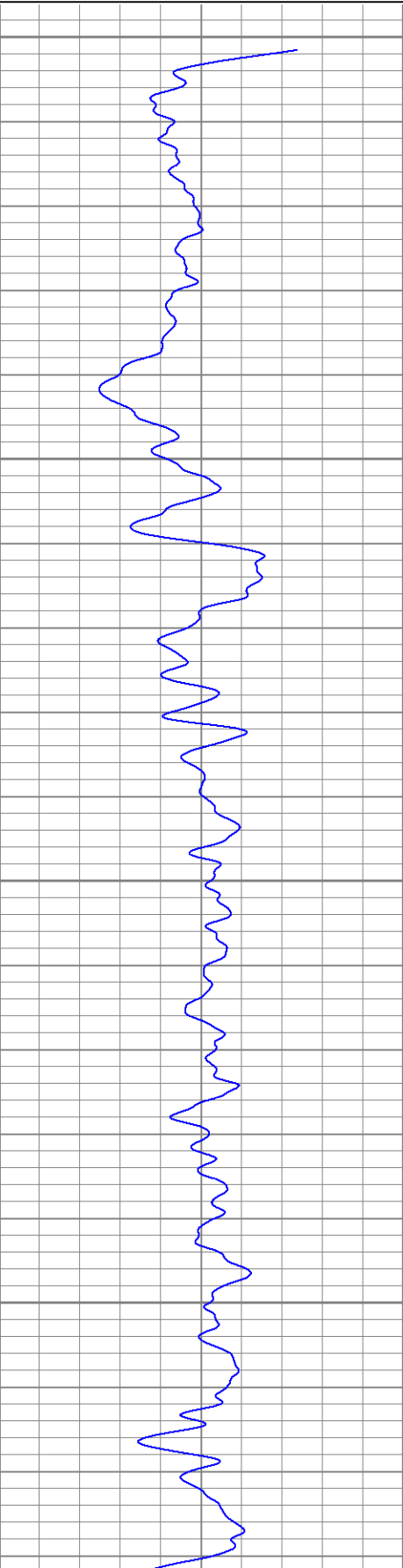
Black Lick, Pa.
Mercer, Pa.
Wooster, Oh.
Cleveland, Ok.
Trinidad, Co.

Main Pass

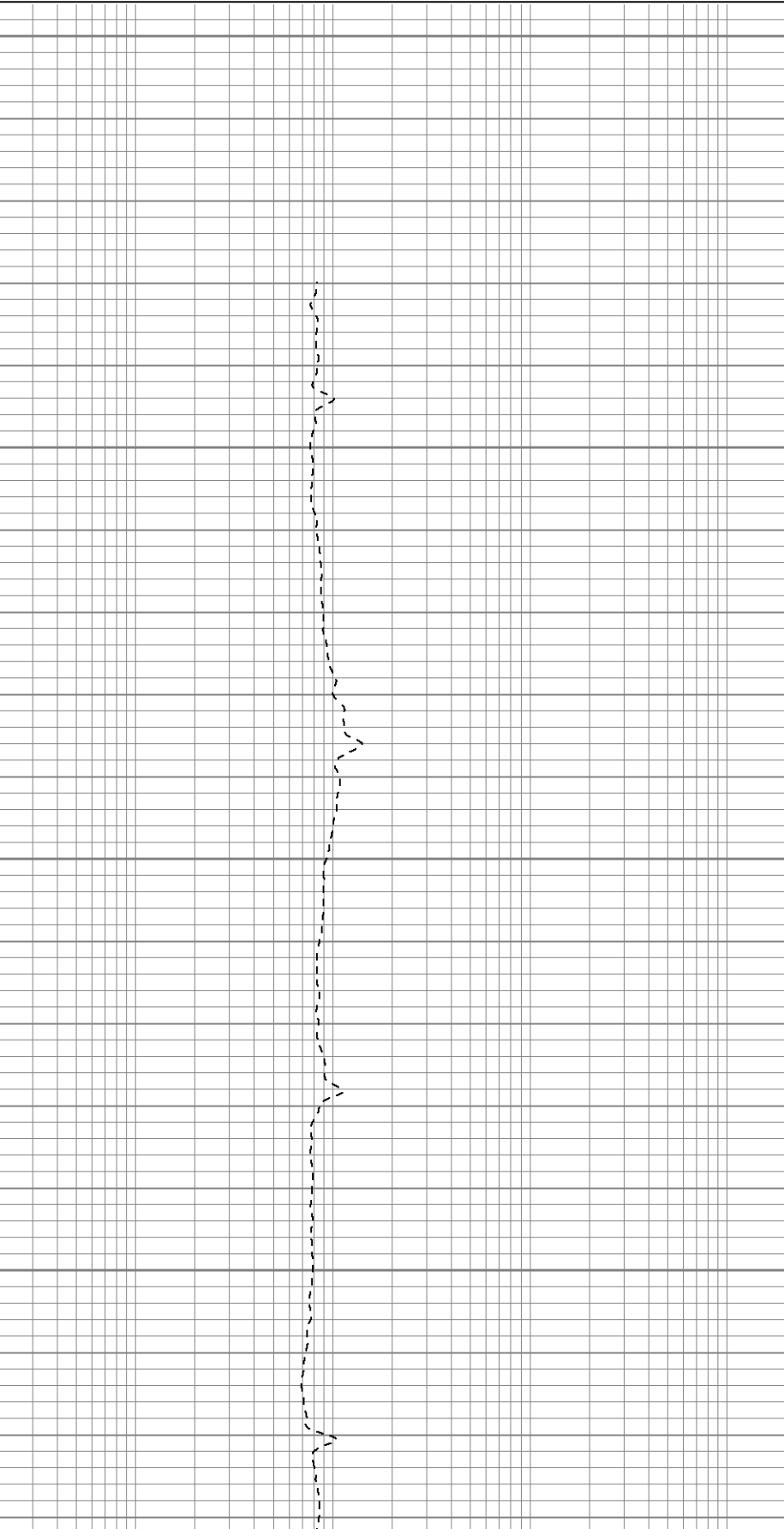
Database File: xtohr3611.db
Dataset Pathname: pass2.1
Presentation Format: dil
Dataset Creation: Sun May 04 12:55:11 2008 by Calc Open-Cased 070814
Charted by: Depth in Feet scaled 1:240

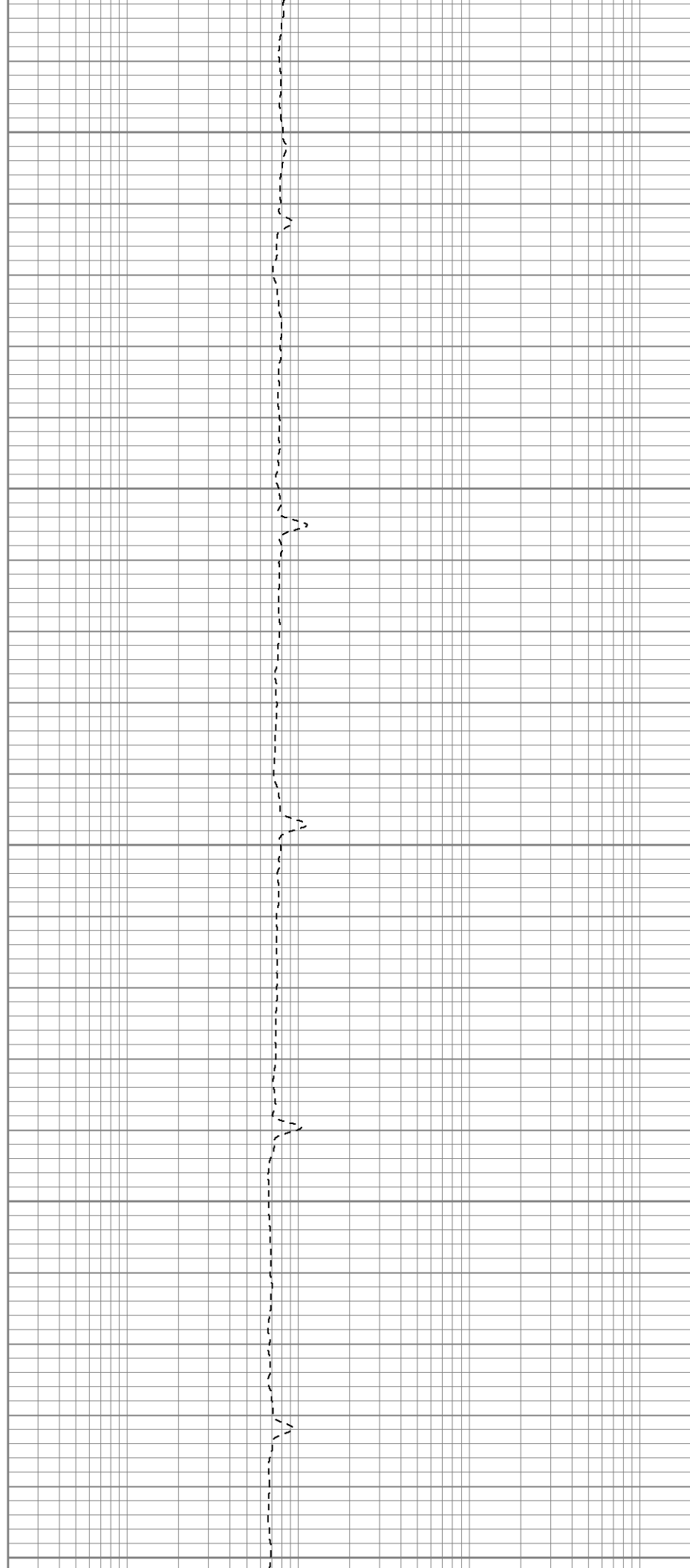
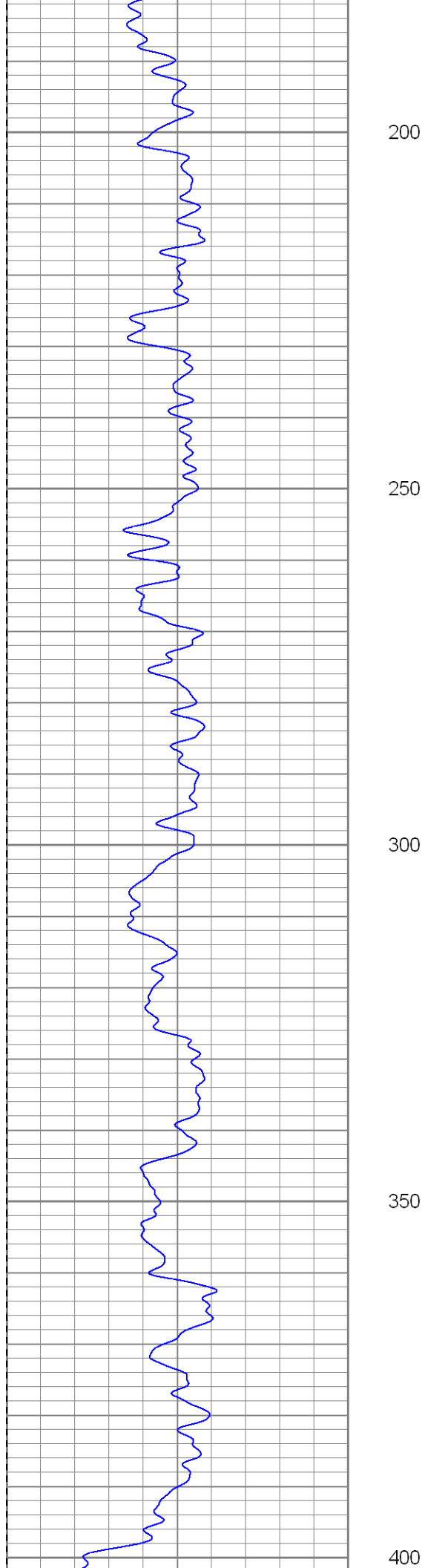
0	GR (GAPI)	200
-200	SP (mV)	0

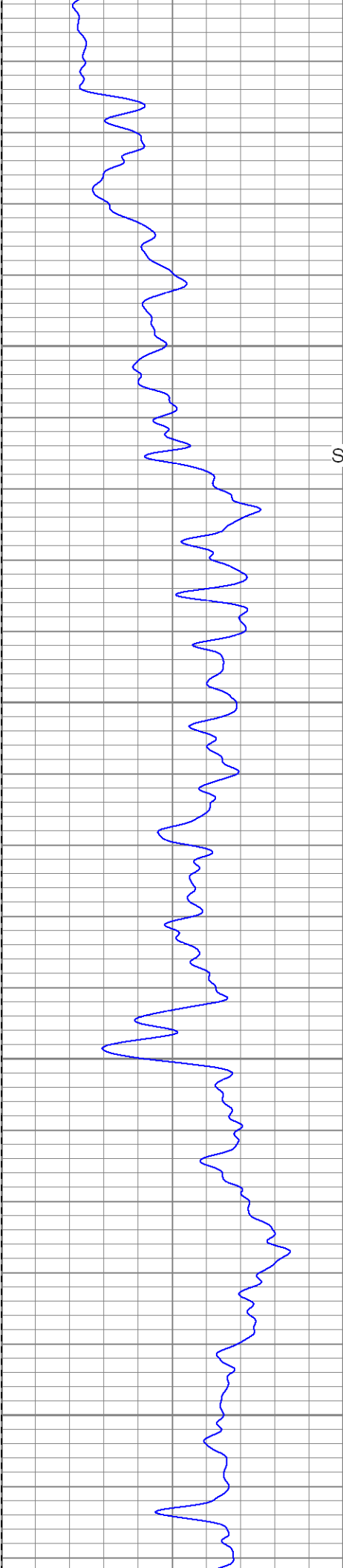
0.2	RILM (Ohm-m)	2000
0.2	RILD (Ohm-m)	2000
0.2	RLL3 (Ohm-m)	2000



0
50
100
150







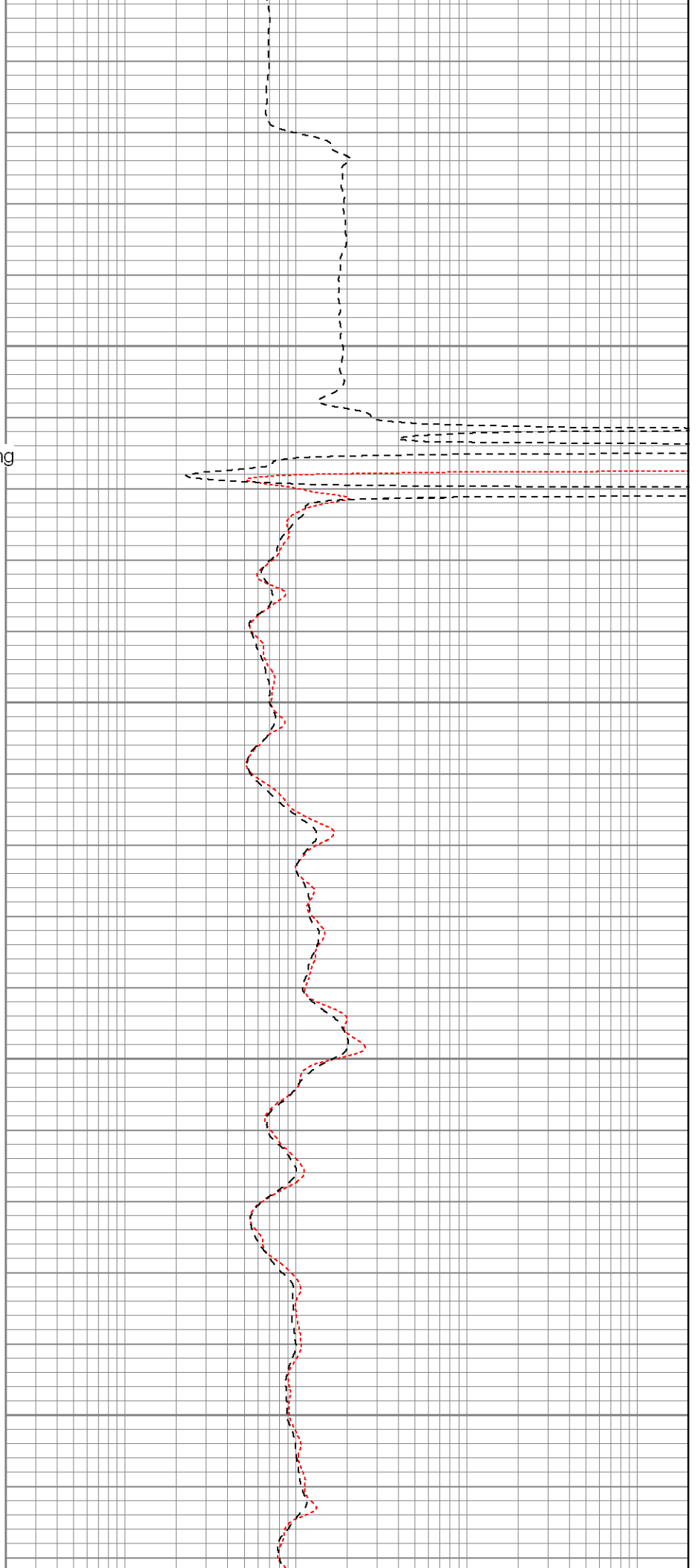
450

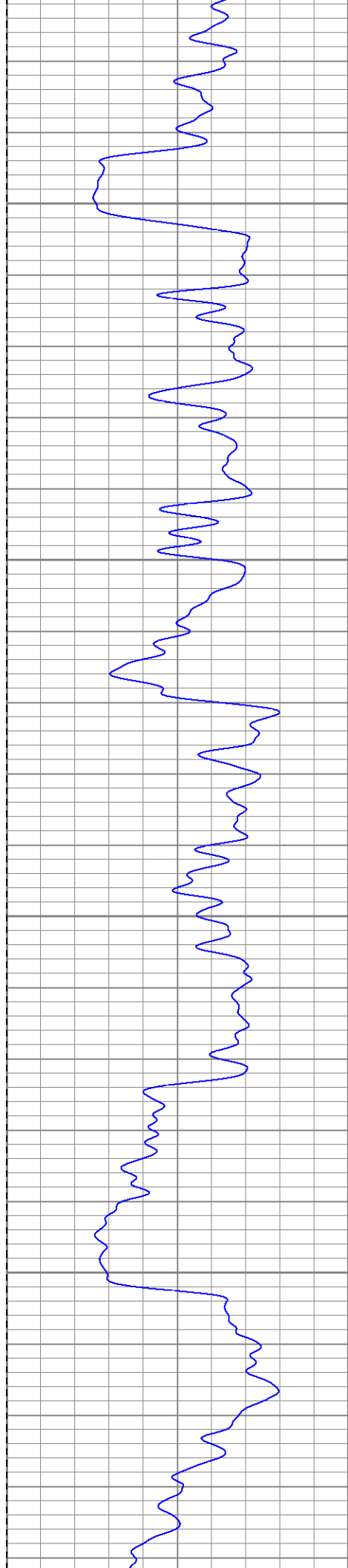
Surface Casing

500

550

600



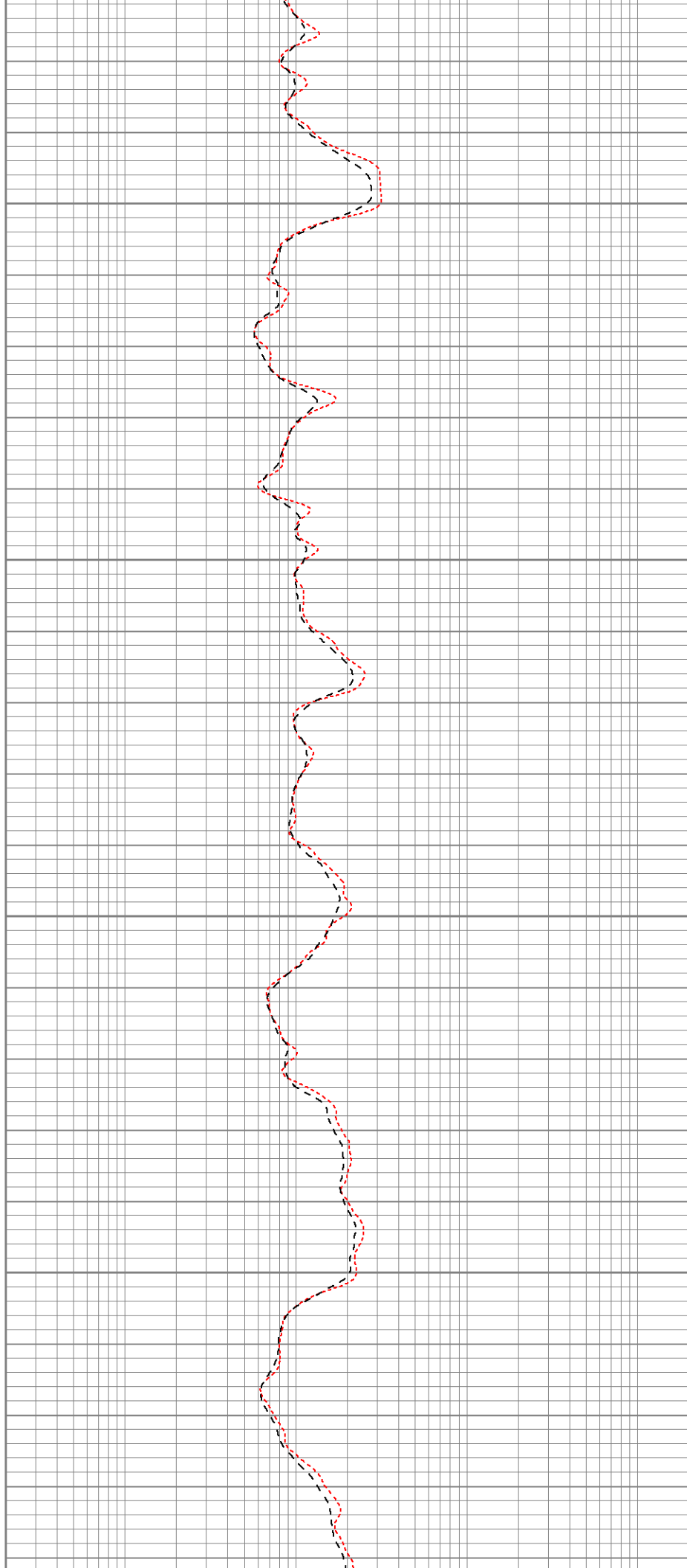


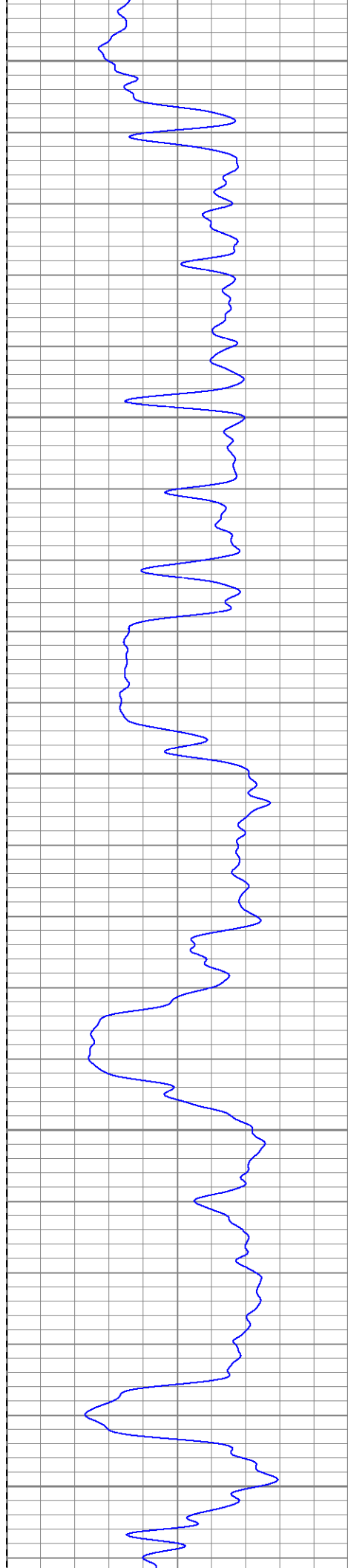
650

700

750

800





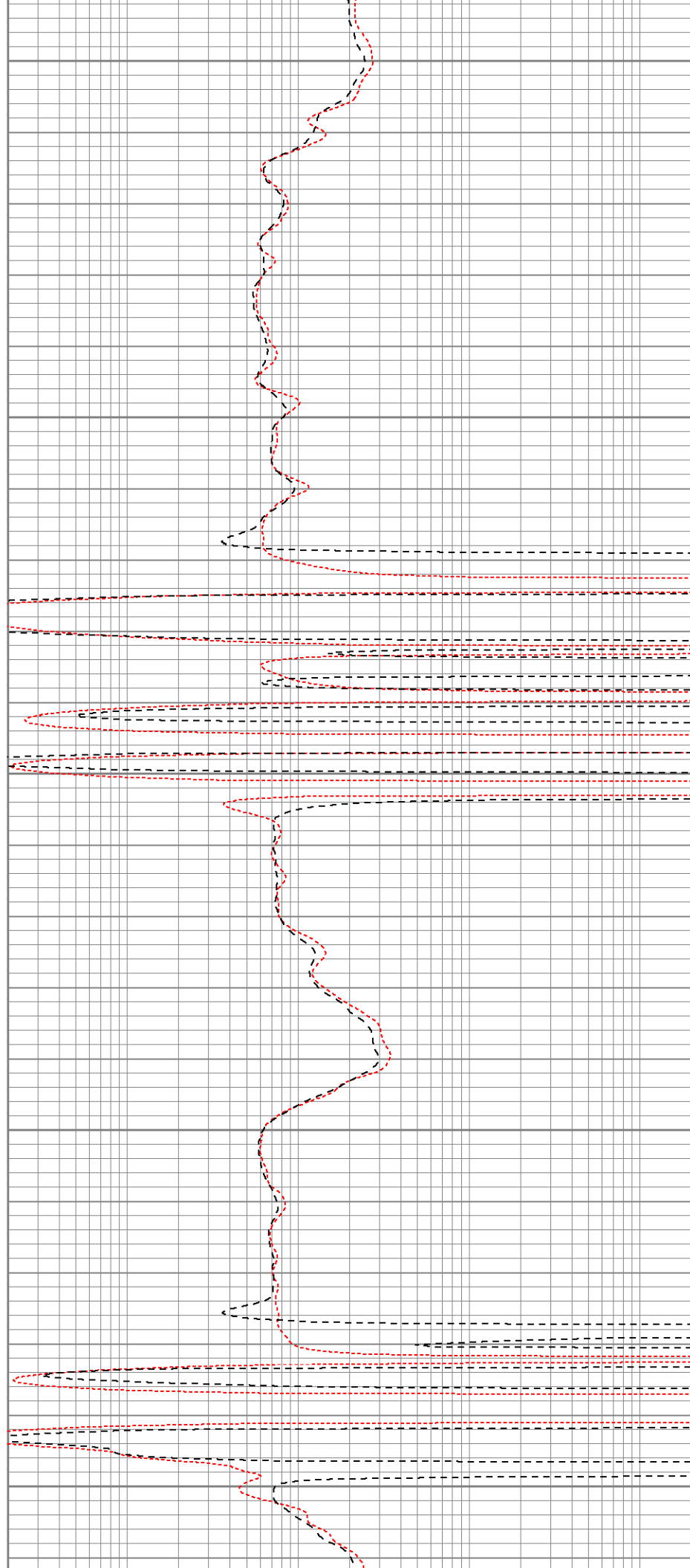
850

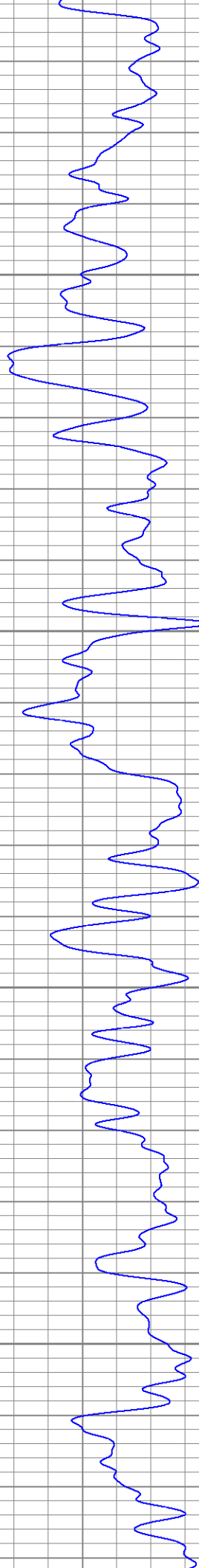
900

950

1000

1050



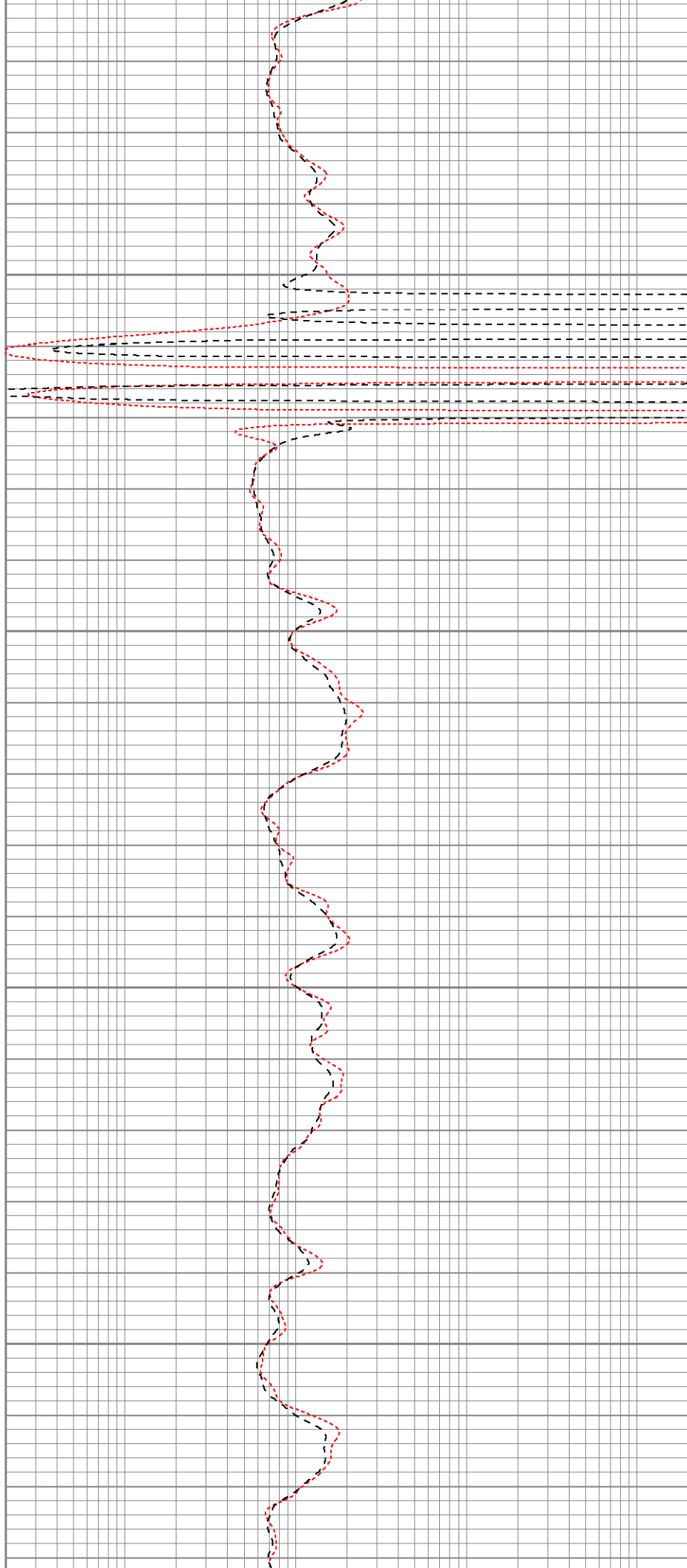


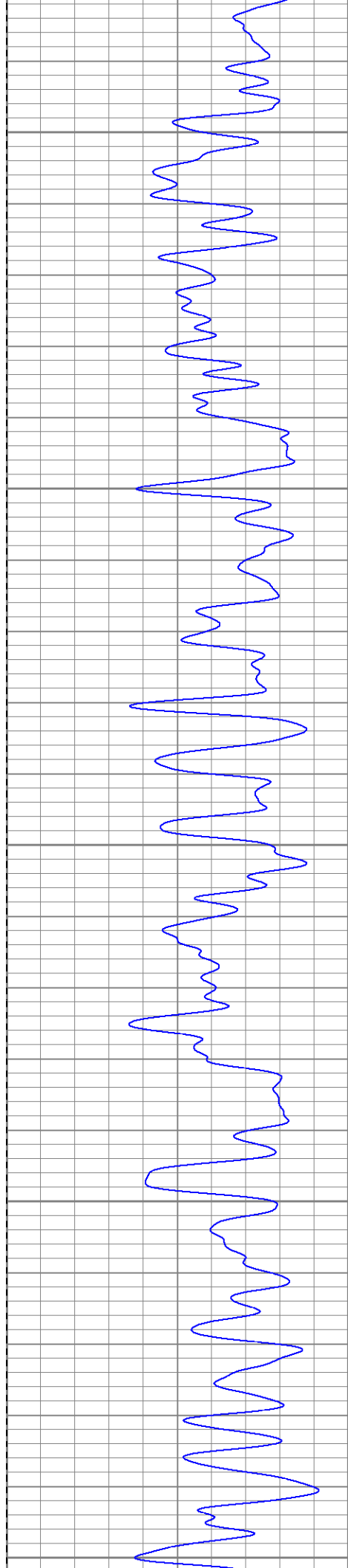
1100

1150

1200

1250





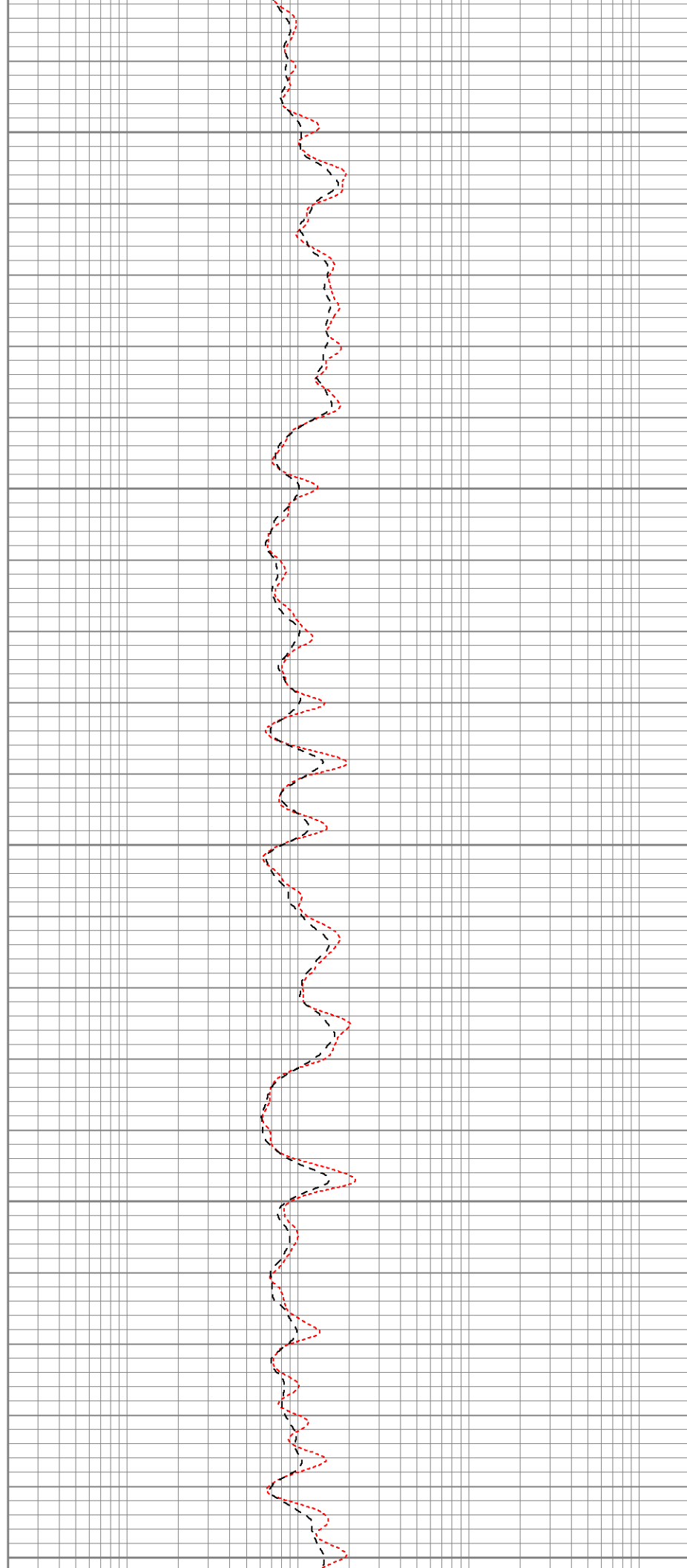
1300

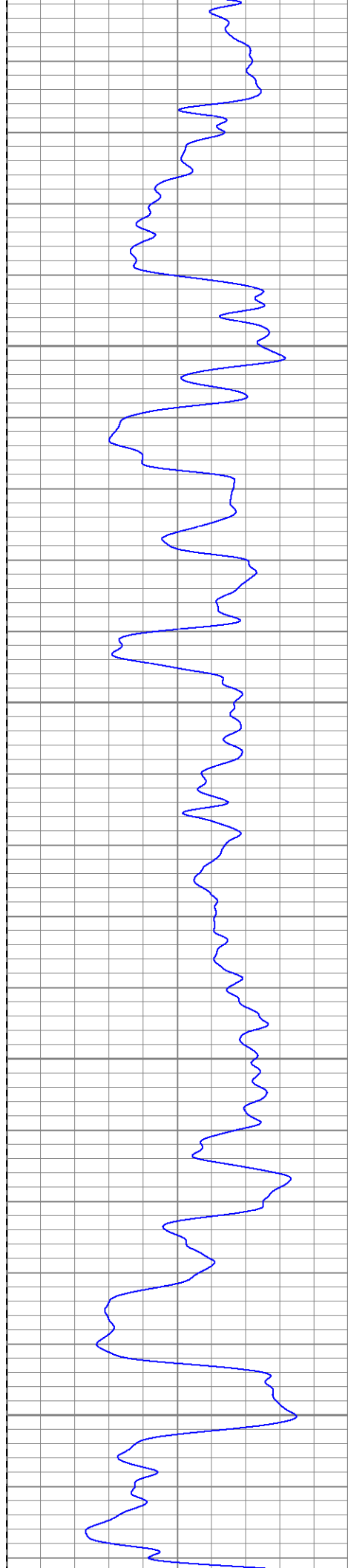
1350

1400

1450

1500



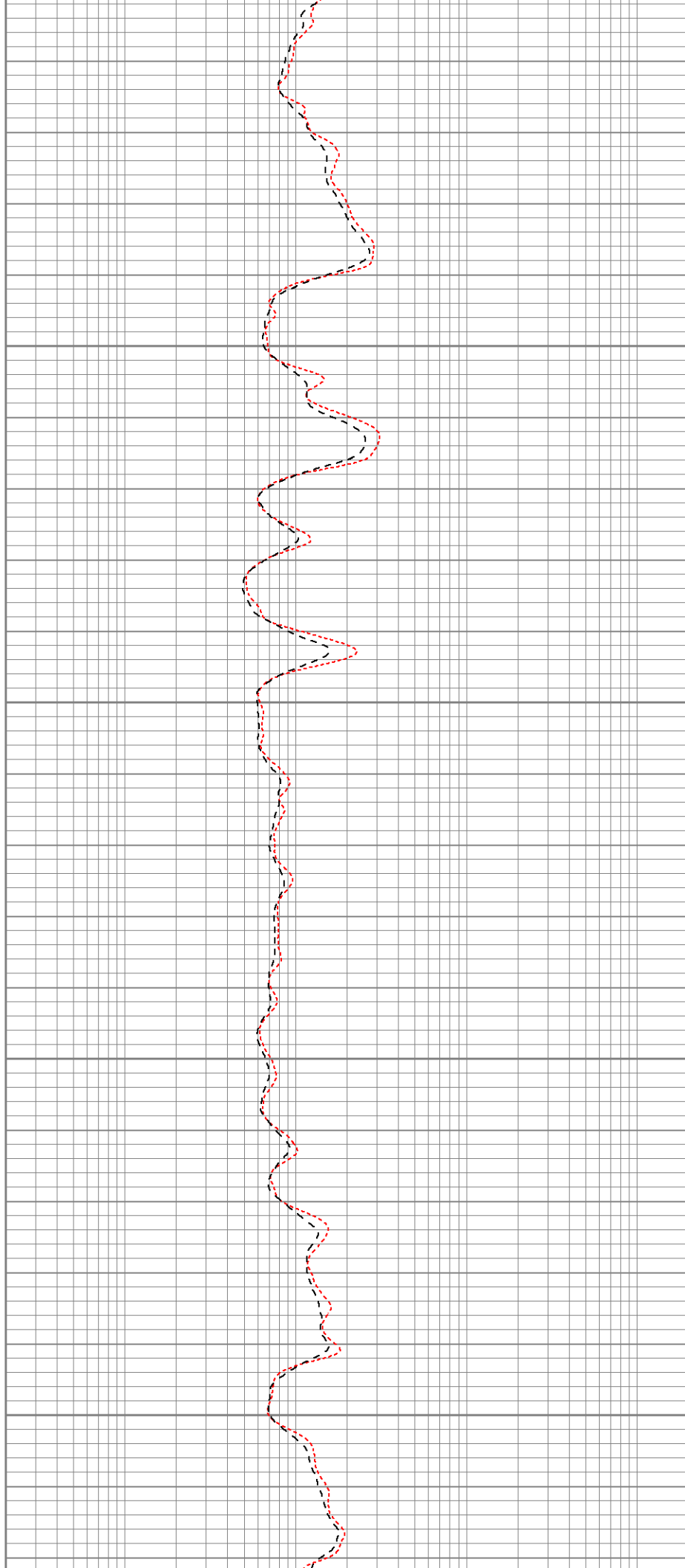


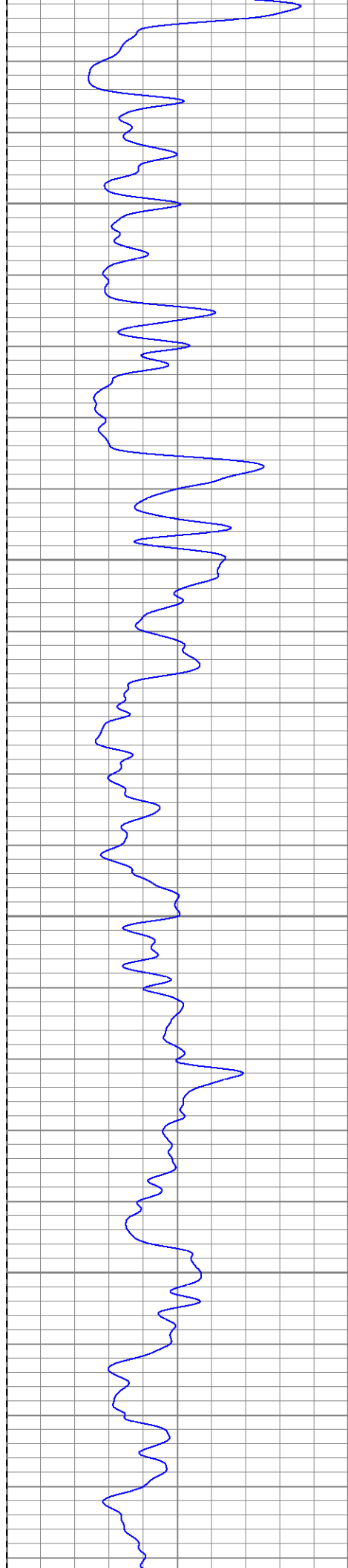
1550

1600

1650

1700



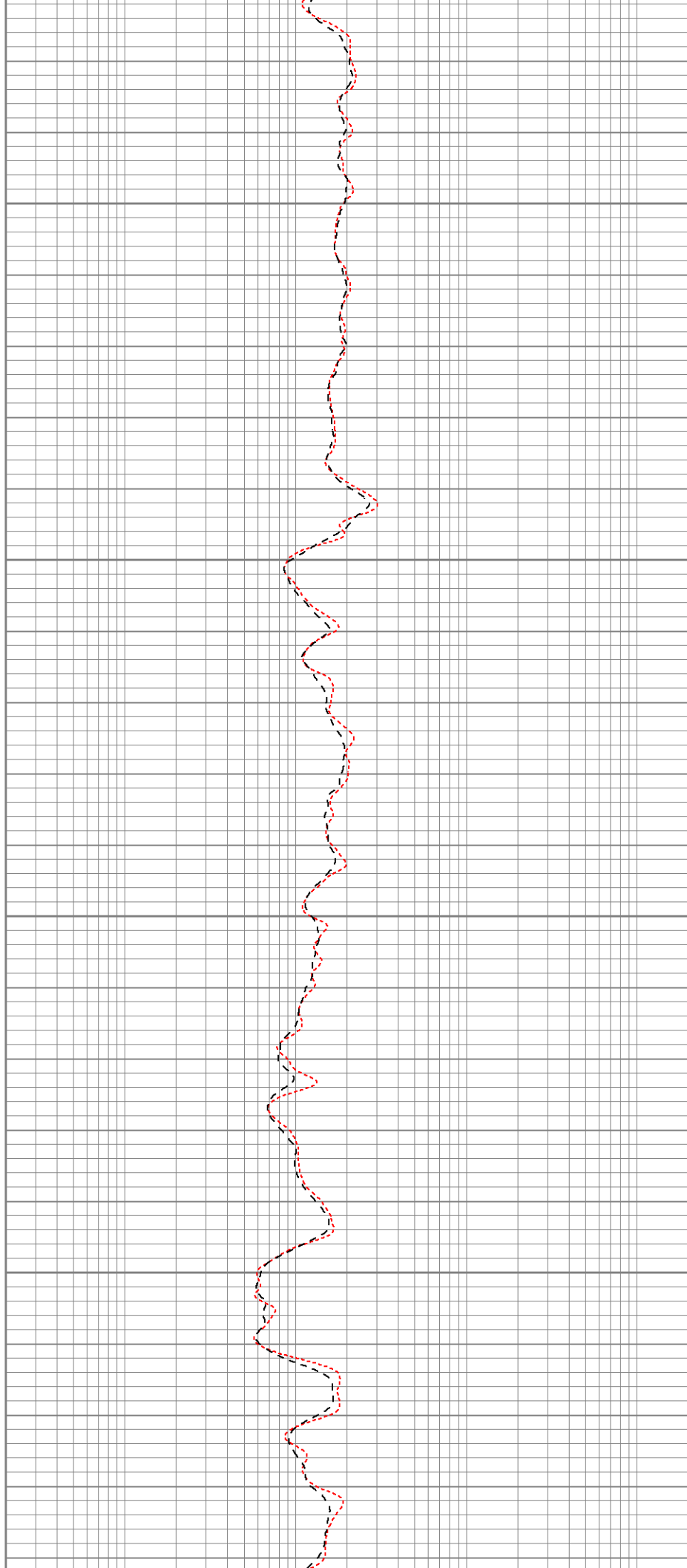


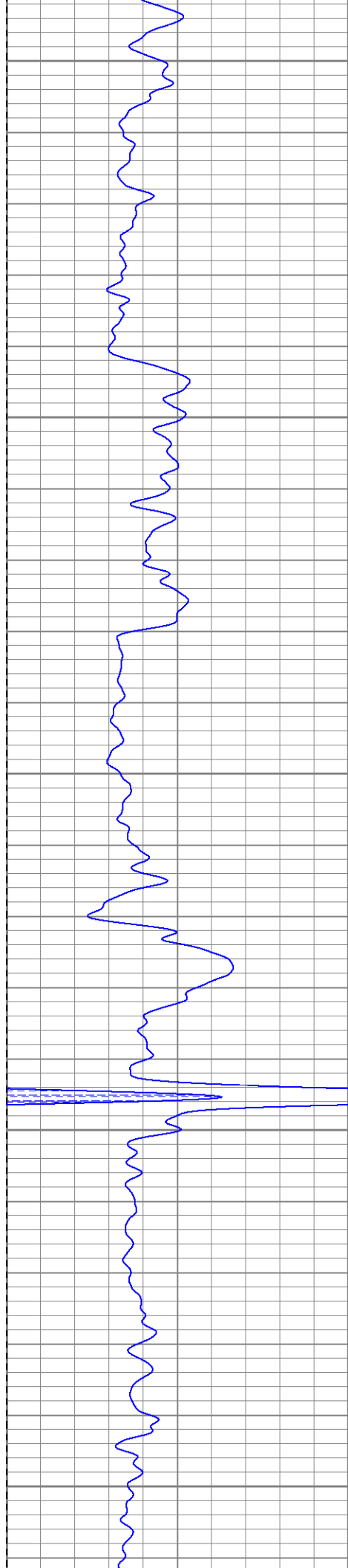
1750

1800

1850

1900





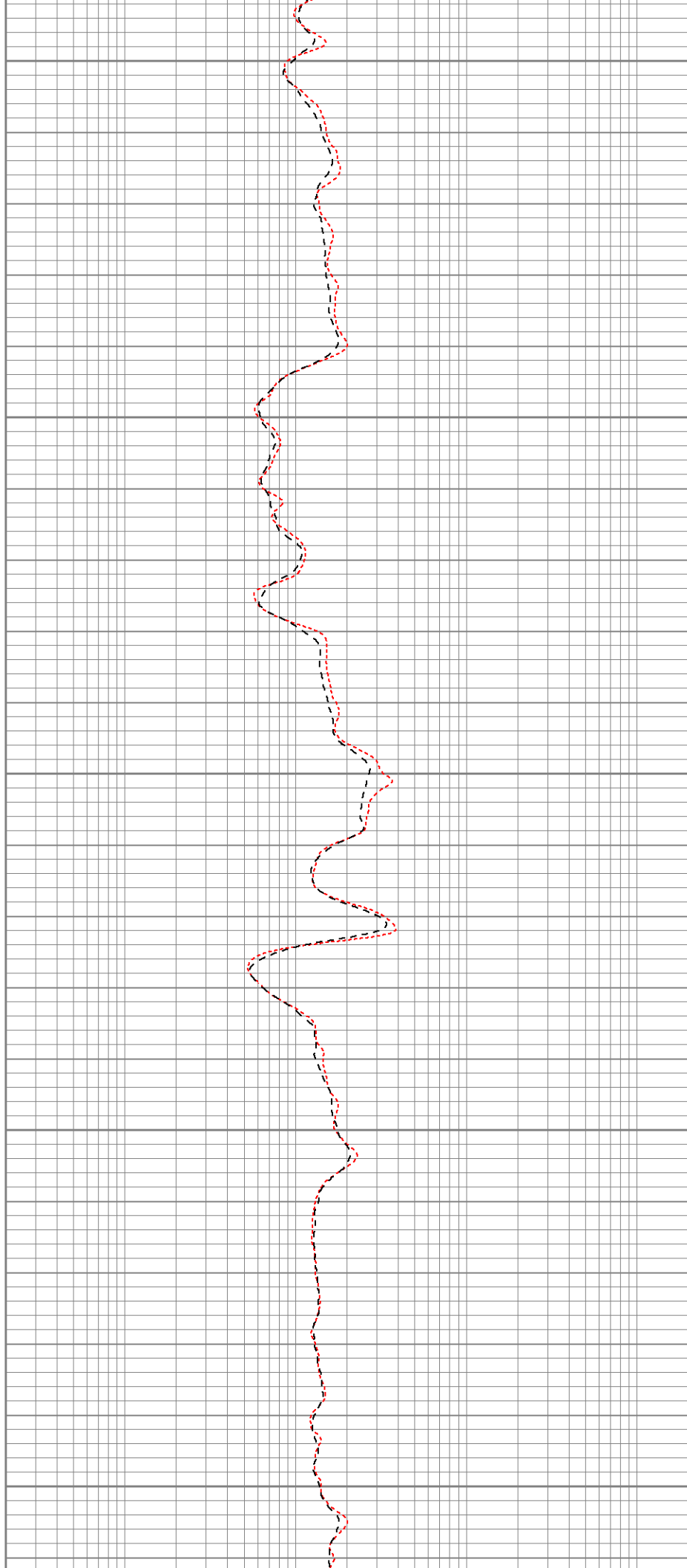
1950

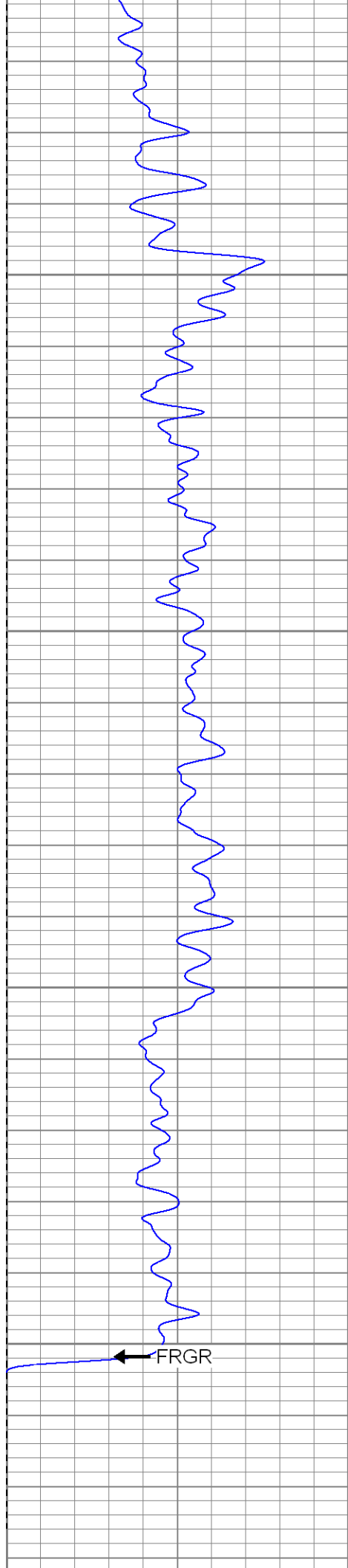
2000

2050

2100

2150





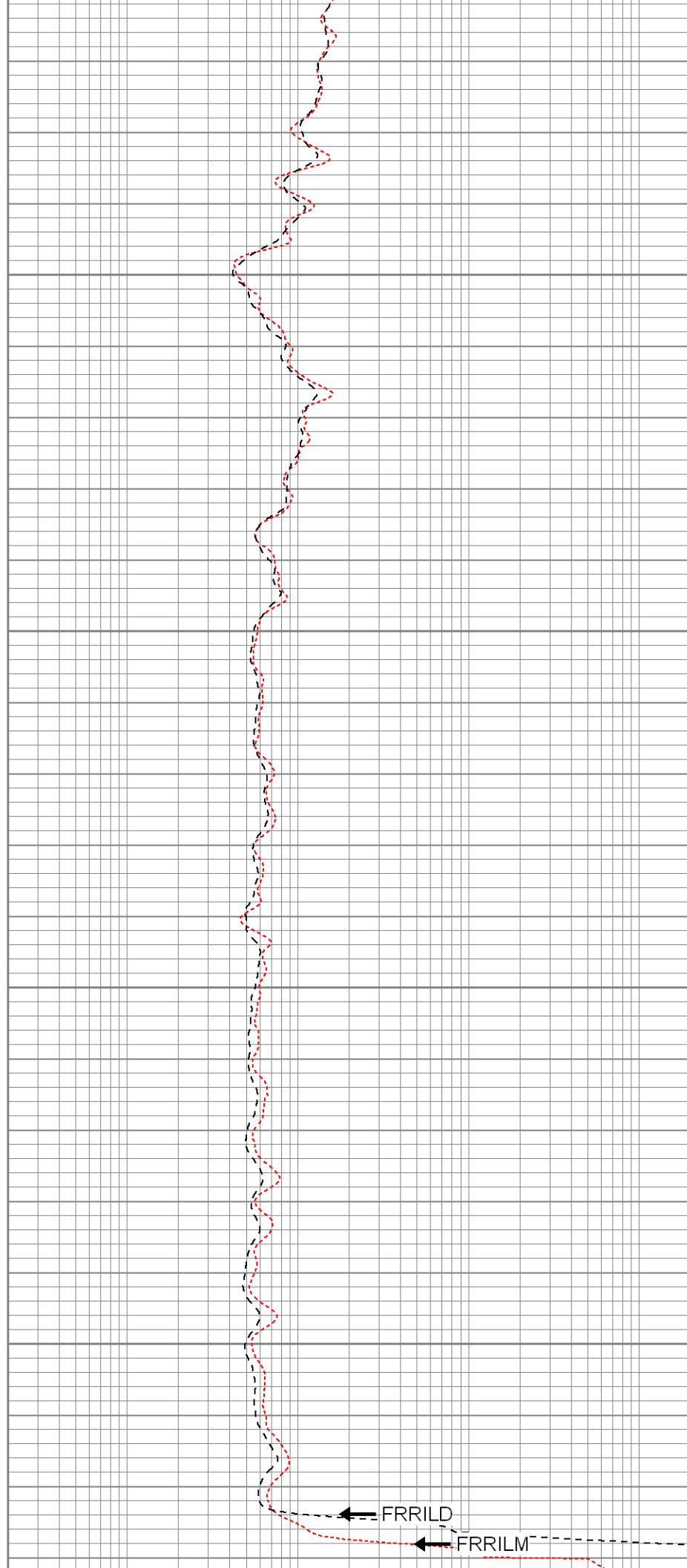
2200

2250

3000

3500

FRGR



FRRILD

FRRILM

0	GR (GAPI)	200	0.2	RILM (Ohm-m)	2000
-200	SP (mV)	0	0.2	RILD (Ohm-m)	2000
			0.2	RLL3 (Ohm-m)	2000



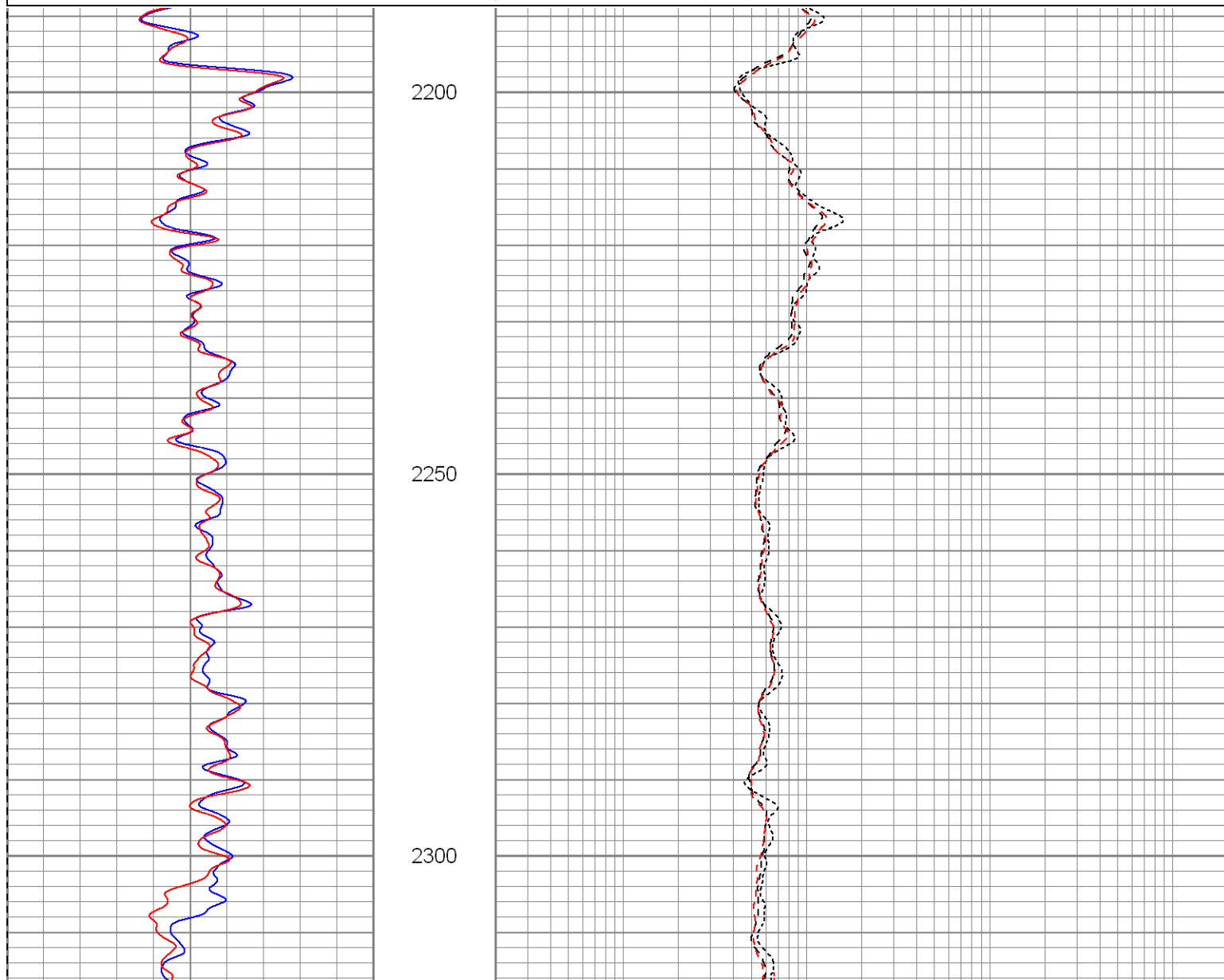
SUPERIOR

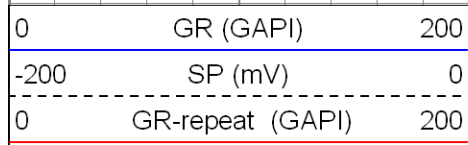
Black Lick, Pa.
Mercer, Pa.
Wooster, Oh.
Cleveland, Ok.
Trinidad, Co.

Repeat Pass

Database File: xtohr3611.db
Dataset Pathname: pass1.1
Presentation Format: dil
Dataset Creation: Sun May 04 11:52:25 2008 by Calc Open-Cased 070814
Charted by: Depth in Feet scaled 1:240

0	GR (GAPI)	200	0.2	RILM (Ohm-m)	2000
-200	SP (mV)	0	0.2	RILD (Ohm-m)	2000
0	GR-repeat (GAPI)	200	0.2	RLL3 (Ohm-m)	2000
			0.2	RILM-repeat (Ohm-m)	2000
			0.2	RILD-repeat (Ohm-m)	2000





0.2	RILM (Ohm-m)	2000
0.2	RILD (Ohm-m)	2000
0.2	RLL3 (Ohm-m)	2000
0.2	RILM-repeat (Ohm-m)	2000
0.2	RILD-repeat (Ohm-m)	2000

Database File: xtohr3611.db
Dataset Pathname: pass1
Dataset Creation: Sun May 04 11:16:29 2008 by Log Open-Cased 070814

Dual Induction Calibration Report

Serial-Model: 5375-G
Surface Cal Performed: Thu May 01 13:51:22 2008
Downhole Cal Performed: Thu May 01 13:52:23 2008

Surface Calibration

Readings				References			Results	
Loop:	Air	Loop		Air	Loop		m	b
Deep	-0.000	0.619	V	0.000	500.000	mmho-m	807.189	0.335
Medium	0.003	0.743	V	0.000	550.000	mmho-m	743.658	-2.260
Internal:	Zero	Cal		Zero	Cal		m	b
Deep	0.000	0.619	V	0.000	500.000	mmho-m	807.722	-0.197
Medium	0.004	0.742	V	0.000	550.000	mmho-m	744.857	-2.782

Downhole Calibration

Readings				References			Results	
Internal:	Zero	Cal		Zero	Cal		m	b
Deep	0.276	500.616	mmho-m	0.532	500.202	mmho-m	0.999	0.257
Medium	0.254	550.254	mmho-m	0.517	549.632	mmho-m	0.998	0.264
Shallow	2.504	0.008	V	500.000	2.000	Ohm-m	124.000	-3.000

Temperature Calibration Report

Serial Number: 2542T
Tool Model: CDLP
Performed: Wed Apr 09 15:14:20 2008

	Reference	Reading
Low Reference:	55.00 degF	3.11 V
High Reference:	160.00 degF	5.35 V
Gain:	46.88	
Offset:	-90.78	
Delta Spacing	1	

Compensated Density Calibration Report

Serial-Model: 2542-T2
Source / Verifier: /
Master Calibration Performed: Fri Apr 04 08:43:29 2008

Master Calibration

	Density		Far Detector	Near Detector	
Magnesium	1.710	g/cc	725.64	339.44	cps
Aluminum	2.590	g/cc	162.65	232.88	cps
Spine Angle = 75.86			Density/Spine Ratio = 0.571		
	Size		Reading		
Small Ring	8.00	in	1.33	V	
Large Ring	14.00	in	2.67	V	

Gamma Ray Calibration Report

Serial Number: 2001
Tool Model: OH
Performed: Thu May 01 08:11:30 2008

Calibrator Value: 1.0 GAPI

Background Reading: 0.0 cps
Calibrator Reading: 1.0 cps

Sensitivity: 0.2500 GAPI/cps


Neutron Calibration Report

Serial Number: 5108
Tool Model: PROBE
Performed: Thu May 01 08:17:16 2008

Calibrator Value: 1 NAPI

Calibrator Reading: 1 cps

Sensitivity: 1 NAPI/cps

Sensor	Offset (ft)	Schematic	Description	Len (ft)	OD (in)	Wt (lb)
NEU	37.47		None	0.75	1.50	5.00
			NEU-PROBE (5108) Probe Epithermal	4.92	3.63	85.00

[illegible]